

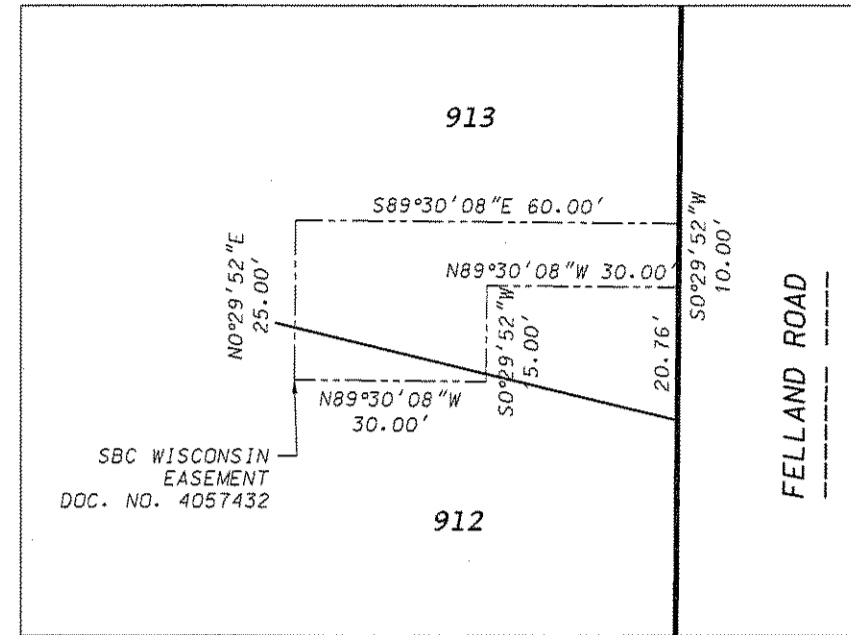
# VILLAGE AT AUTUMN LAKE REPLAT

LOTS 1-233, 241-519, OUTLOTS 1-15, OUTLOTS 18-39 AND VARIOUS PUBLIC RIGHT-OF-WAYS DISCONTINUED BY THE CITY OF MADISON RES-15  
 DOC. NO. \_\_\_\_\_ WITHIN VILLAGE AT AUTUMN LAKE, LOCATED IN THE NE1/4, SW1/4, SE1/4 OF THE NW1/4, AND THE NE1/4, NW1/4, SW1/4 AND THE SE1/4 OF THE SW1/4, AND THE NW1/4 AND THE SW1/4 OF THE SE1/4 OF SECTION 26, T8N, R10E, CITY OF MADISON, DANE COUNTY, WISCONSIN

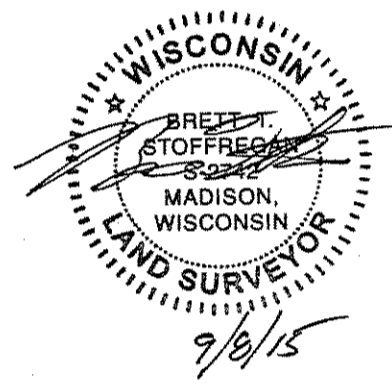
There are no objections to this plat with respect to Secs. 236.15, 236.16, 236.20 and 236.21(1) and (2), Wis. Stats. as provided by s. 236.12, Wis. Stats.

Certified \_\_\_\_\_, 20\_\_\_\_

Department of Administration



SBC EASEMENT DETAIL  
 DOC. NO. 4057432  
 1"=30'



0 60' 120'  
 1"=60'

GRID NORTH  
 WISCONSIN COUNTY COORDINATE SYSTEM  
 (DANE ZONE)  
 WEST LINE OF THE NE1/4 OF SECTION 26,  
 T8N, R10E BEARS N00°27'32"E

**LEGEND**

Placed 1-1/4" x 18" solid round iron rebar stake, weighing 4.30 lbs/ft. All other lot and outlot corners are marked with 3/4" x 18" solid round iron rebar stakes, weighing 1.50 lbs/ft.

Public utility easement (5' wide unless otherwise dimensioned). Utility easements as herein set forth are for the use of PUBLIC BODIES and PRIVATE PUBLIC UTILITIES having the right to serve the area.

Recorded as information

No Vehicular Access

SEE SHEET 13

O.L. 60

O.L. 62

O.L. 63

SEE SHEETS 5 AND 9

SEE SHEET 9

Received: 09/08/2015  
 CPA

27413

0101

D'ONFRIO KOTTKE AND ASSOCIATES, INC.

7530 Westward Way, Madison, WI 53717  
 Phone: 608.833.7530 • Fax: 608.833.1089

YOUR NATURAL RESOURCE FOR LAND DEVELOPMENT

FN:14-07-117

SHEET 8 OF 21