

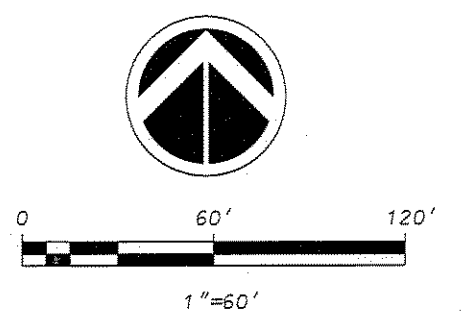
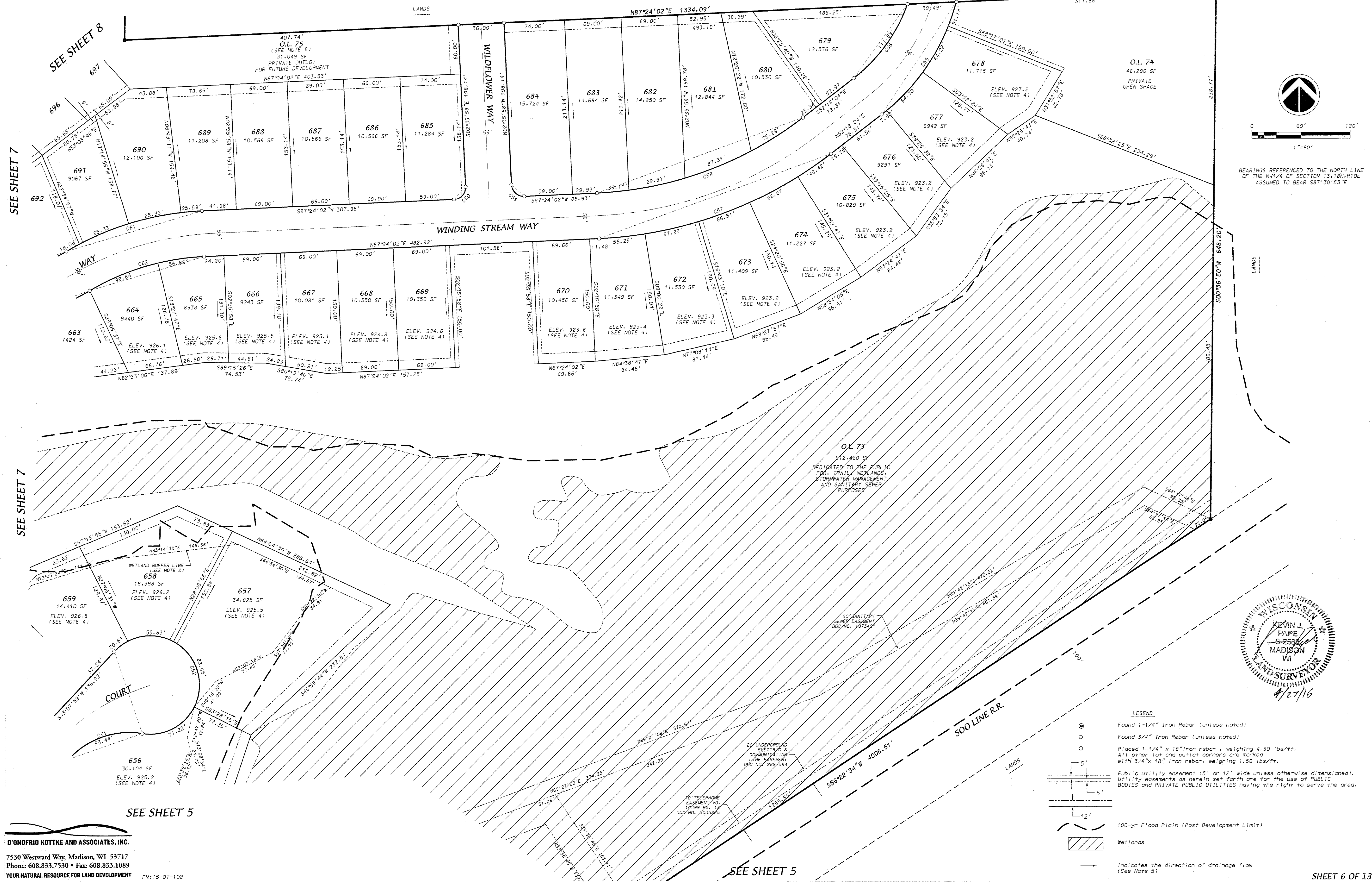
# SIXTH ADDITION TO SMITH'S CROSSING

CITY OF SUN PRAIRIE, DANE COUNTY, WISCONSIN

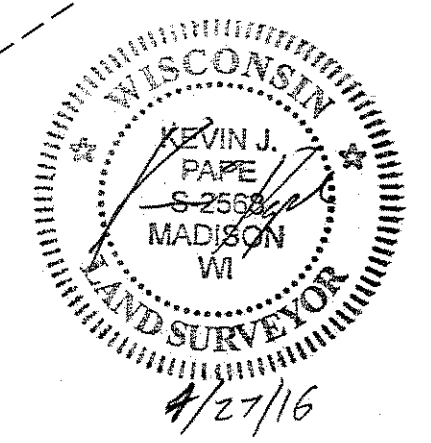
There are no objections to this plat with respect to Secs. 236.15, 236.16, 236.20 and 236.21(1) and (2), Wis. Stats. as provided by s. 236.12, Wis. Stats.

Certified \_\_\_\_\_, 20\_\_

Department of Administration



BEARINGS REFERENCED TO THE NORTH LINE OF THE NW1/4 OF SECTION 13, T8N, R10E ASSUMED TO BEAR S87°30'53"E



- LEGEND**
- Found 1-1/4" Iron Rebar (unless noted)
  - Found 3/4" Iron Rebar (unless noted)
  - Placed 1-1/4" x 18" iron rebar, weighing 4.30 lbs/ft. All other lot and outlot corners are marked with 3/4" x 18" iron rebar, weighing 1.50 lbs/ft.
  - Public utility easement (5' or 12' wide unless otherwise dimensioned). Utility easements as herein set forth are for the use of PUBLIC BODIES and PRIVATE PUBLIC UTILITIES having the right to serve the area.
  - 100-yr Flood Plain (Post Development Limit)
  - ▨ Wetlands
  - Indicates the direction of drainage flow (See Note 5)

Received: 04/27/2016  
CPA  
**27500**

**D'ONOFRIO KOTTKE AND ASSOCIATES, INC.**  
7530 Westward Way, Madison, WI 53717  
Phone: 608.833.7530 • Fax: 608.833.1089  
YOUR NATURAL RESOURCE FOR LAND DEVELOPMENT

SEE SHEET 5

SEE SHEET 5

SHEET 6 OF 13