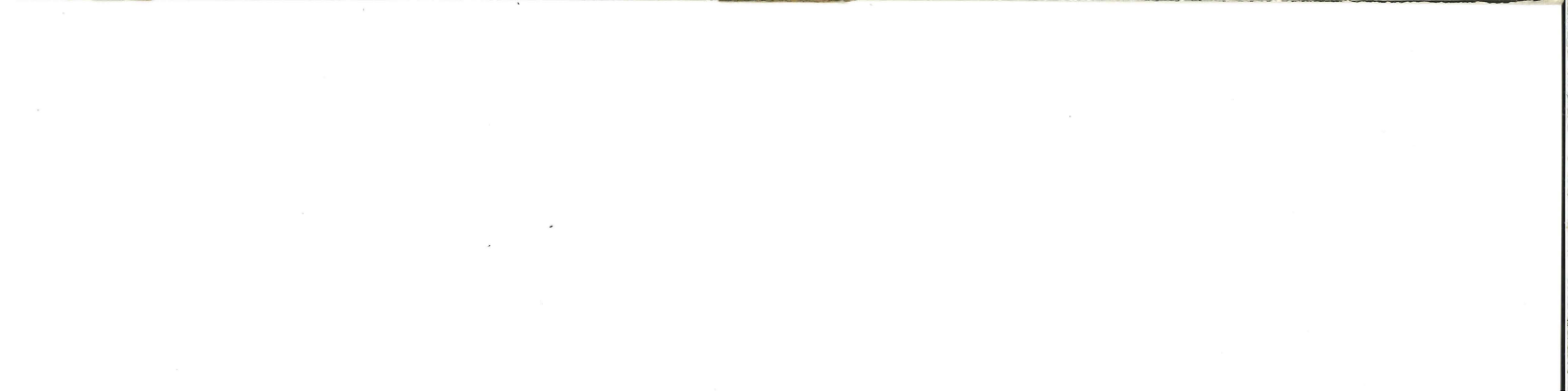
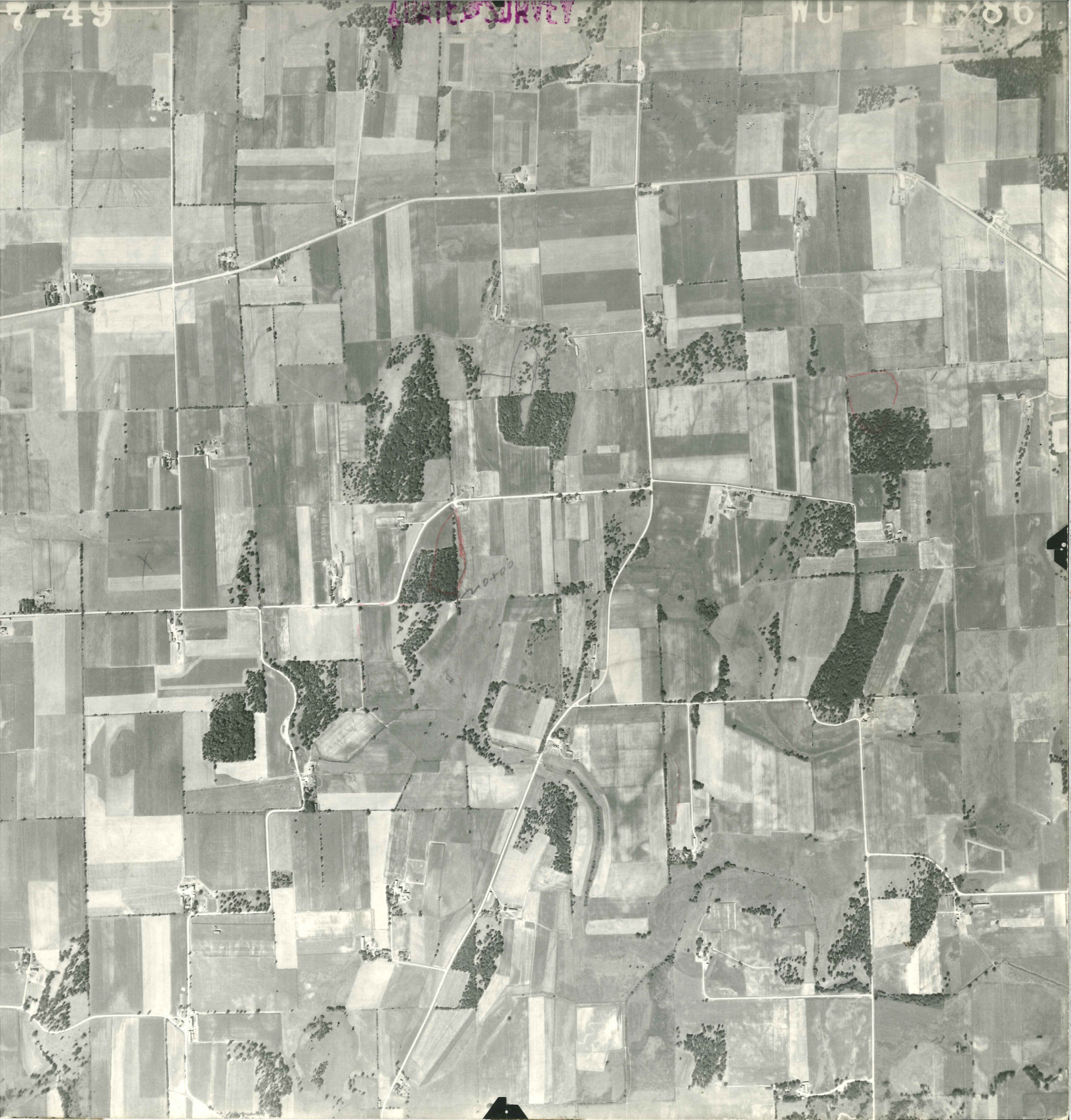


7-24'40

WU-3-A-41





7-49

DATE OF SURVEY

WU-1F-87



6 24 37

WU-2 119
FL-20





50(1)

30

29

US-12

W





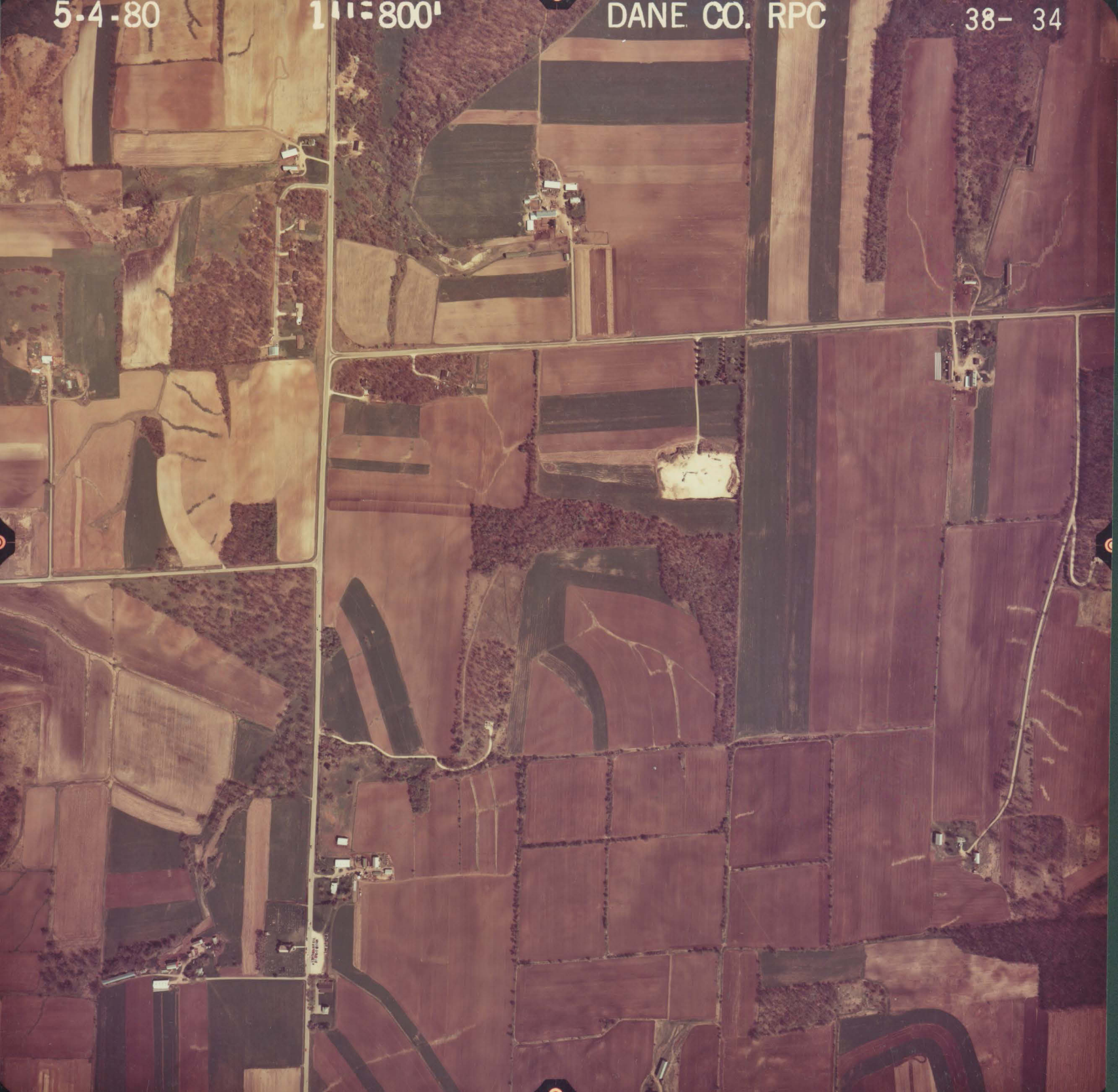


5-4-80

1:1=800'

DANE CO. RPC

38- 34



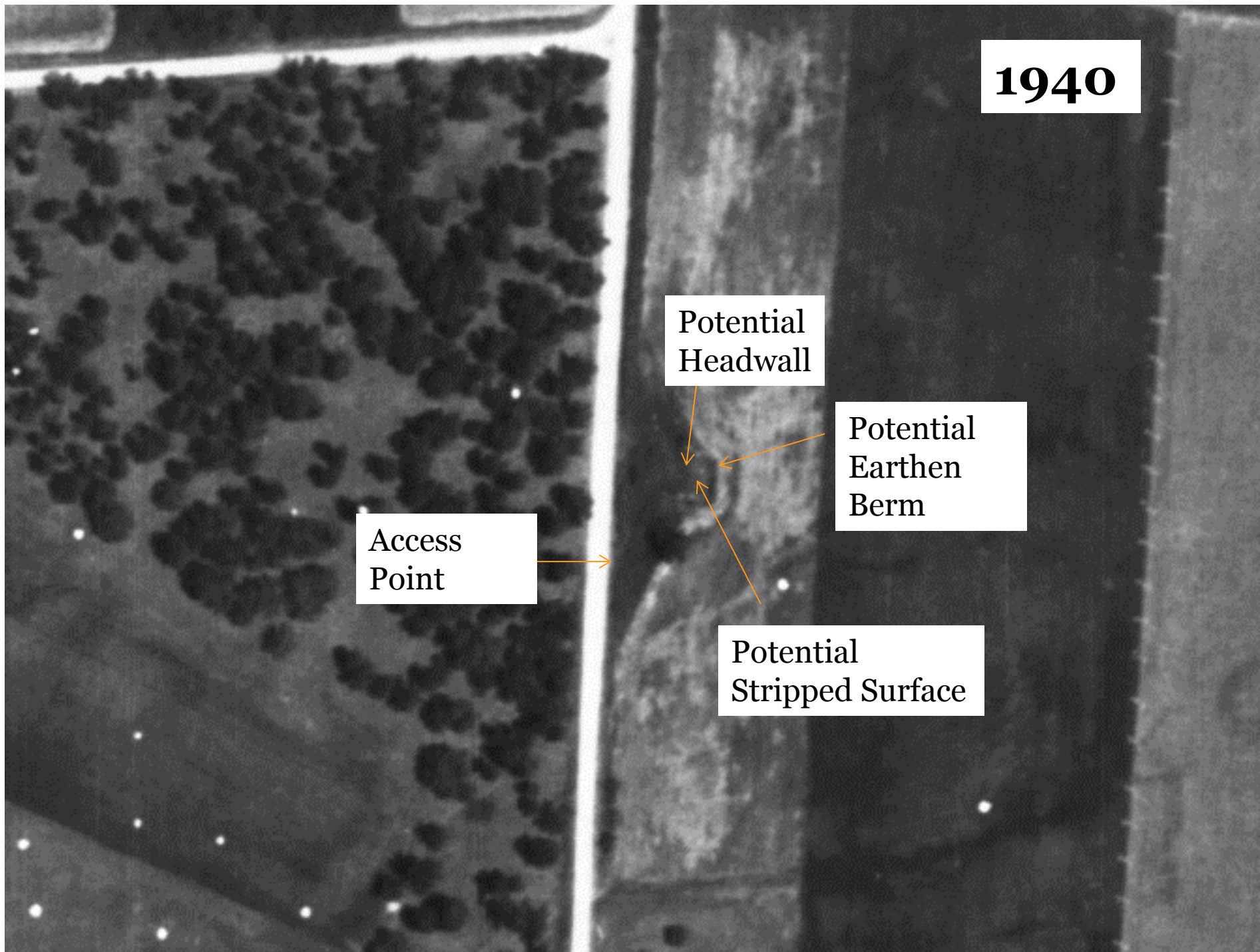
1940

Potential
Headwall

Potential
Earthen
Berm

Access
Point

Potential
Stripped
Surface



Mr. Kraemer specializes in environmental regulatory support and policy. He has substantial experience working with the local, state, and federal regulatory agencies on complex, often controversial projects. Mr. Kraemer has substantial experience assisting clients at the project planning level to identify and plan for environmental regulatory implications and risk across many industry sectors with particular expertise in the utility and private development industries. Mr. Kraemer has a thorough understanding of the technical and regulatory aspects of environmental projects. His experience includes: Project critical issues analysis/permitting feasibility assessments; Wetland and other natural resource investigations, mitigation planning, and permitting; Clean Water Act and Endangered Species Act studies and consultation; and National Environmental Policy Act documentation (EA/EIS).

In addition to environmental regulatory expertise, Mr. Kraemer has a strong technical background in wetland ecology and botany and manages Stantec's Midwest ecological restoration implementation group. This group is responsible for building, managing, and monitoring natural area restoration projects such as wetland mitigation. Mr. Kraemer is an assured wetland professional through the Wisconsin Department of Natural Resources Wetland Delineation Professional Assurance Initiative and has extensive environmental consulting experience as both a field ecologist and project manager.

EDUCATION

Wetland Training Institute, Training, Wetland Soils and Hydrology, 2003

Vegetation of Wisconsin Workshop, Training, UW-Milwaukee, 2000

Wetland Delineation Training Workshop, Continuing Education and Extension, UW-La Crosse, 2001

Identification of Sedges Workshop, Training, UW-Milwaukee, 2001

Environmental Corridor Delineation Workshop, Training, Southeastern Wisconsin Regional Planning Commission (SEWRPC), 2004

M.S. – Biological Sciences (Emphasis in Wetland Ecology), University of Wisconsin, Milwaukee, Wisconsin, 2003

B.S. – Biological Sciences (Emphasis in Aquatic Biology), University of Wisconsin, La Crosse, Wisconsin, 1999

Assured Wetland Delineator, Milwaukee, Wisconsin, 2008

REGISTRATIONS

Professionally Assured Wetland Delineator, Wisconsin Department of Natural Resources

Wetland Professional in Training (WPIT), Society of Wetland Scientists Certification Program

MEMBERSHIPS

Member, Society of Wetland Scientists

Member, Wisconsin Wetlands Association

PROJECT EXPERIENCE

Commercial / Retail Development

Commercial Development, Windsor, Wisconsin
Completed wetland delineation/evaluation, wetland permitting, and wetland mitigation planning in support of the commercial development project.

Fitchburg Technology Campus, Fitchburg, Wisconsin

Completed woodland assessment, tree survey, and woodland restoration and management plan in support of retail and commercial development project.

Jeffrey D. Kraemer W.P.I.T.

Senior Scientist / Project Manager

Conventional Power

Edgewater Generation Facility, Sheboygan, Wisconsin

Managed and coordinated environmental regulatory process for expansion of existing fly-ash disposal facility which required approvals from the USACE and WDNR for wetland impacts associated with the project.

Waukegan Power Station, Lake County, Illinois

Provided threatened and endangered species consultation and wetland surveying along Lake Michigan shorelines for permitting a dredging activity and expansion of the facility.

Nelson Dewey Power Generation Facility Expansion Project, Caseville, Wisconsin

Completed comprehensive field evaluations of wetlands in preparation of NEPA documentation for expansion of the facility.

Waukegan Power Generation Facility Expansion Project, Lake County, Illinois

Completed field evaluations of wetlands and threatened and endangered species in coordination with Section 404 permitting requirements for expansion of the facility.

Invasive Species Survey, Prairie Du Sac, Wisconsin

Conducted a purple loosestrife survey on Lake Wisconsin shorelines and wetlands in order to develop a purple loosestrife management plan in support of the hydroelectric facility FERC licensing.

Ecosystem Restoration

Campus Facility Native Landscape Management, Milwaukee County, Wisconsin

Managed and coordinated development of a native landscape plan for the 50 acres of open space surrounding Northwestern Mutual's campus facility. The plan consisted of wetland, woodland, and prairie restoration. Following completion and approval of the plan, continued to manage and coordinate the implementation of native landscape installation and long-term management.

Threatened Plant Species Consultation, Port Wing, Wisconsin

*Completed comprehensive study of a threatened plant species population (*Petasites sagittatus*) in support of STH 13 Reconstruction project including preparation of relocation and monitoring plan, physical relocation of plants, and follow-up annual monitoring. This project resulted in one of the first documented, successful relocation of this species after five years of monitoring.*

Neptune Wetland Mitigation Site, Richland County, Wisconsin

Completed annual comprehensive vegetation surveys, mapping, performance evaluations, and reporting of a 50-acre wetland mitigation bank site.

Lake Koshkonong Water Level and Wetland Studies, Lake Koshkonong, Wisconsin

*Developed and conducted wetland studies for development of a water level management plan: *E. prairie* fringed orchid hydrology study; Floodplain forest/hydrology study; Floristic quality assessment/vegetation mapping within 4000 acres of wetlands.*

Wildcat Mountain Wetland Mitigation Monitoring, Vernon County, Wisconsin

Completed comprehensive vegetation surveys, mapping, performance evaluations, and reporting of 38-acre mitigation site.

Jug Creek Wetland Mitigation Monitoring, Vernon County, Wisconsin

Completed comprehensive vegetation surveys, mapping, performance evaluations, and reporting of 10-acre mitigation site.

Wetland Mitigation Bank Monitoring and Remediation, Oakdale, Wisconsin

Completed annual mitigation site monitoring, vegetation surveys, and performance evaluations of 60-acre mitigation bank site. Completed mitigation remediation management plan for compliance with USACE performance standards.

Samuelson Fen Restoration, Portage, Indiana

Developed restoration plan to restore a degraded 30-acre fen, conducted vegetation surveys, floristic quality assessments and hydrology monitoring.

* denotes projects completed with other firms

Jeffrey D. Kraemer W.P.I.T.

Senior Scientist / Project Manager

Healthcare

Badger Prairie Health Care Center Expansion Project, Verona, Wisconsin

Completed wetland delineation/evaluations and wetland permitting in support of the expansion of the healthcare facility.

Oil and Gas Pipelines

New Gas Pipeline Project, Wausau, Wisconsin

Completed environmental surveys along proposed gas pipeline corridor including environmental assessments, threatened and endangered plant species survey, and identification of wetland and upland community types.

Southern Access Expansion Project, Wisconsin

Crude Petroleum Pipeline Project. Completed wetland delineations and habitat assessments along a 343 mile proposed crude petroleum pipeline corridor through Wisconsin as part of Enbridge Energy's Southern Access Expansion Program.

Power Transmission & Distribution

ComEd Prairie Programs, Various Locations, Illinois

Project manager for supporting ComEd's Prairie Program. ComEd initiated this program to restore native prairie habitats within their electric transmission Rights-of-way (ROW) and buffers. Stantec manages this program in coordination with ComEd which includes development of native management plans; coordination with site stewards; development of annual budgets; development of performance standards, and identifying new sites and stewards for program expansion. Stantec's implementation services include a full range of prairie restoration and management including preparing and installing new prairies and managing existing prairies through herbiciding, mowing, shrub removal; and prescribed burning. Currently there are over 100 acres of ROW within the prairie program in various stages of development.

Prairie Program

Project manager for supporting ComEd's Prairie Program. ComEd initiated this program to restore native prairie habitats within their electric transmission Rights-of-way (ROW) and buffers. Stantec manages this program in coordination with ComEd which includes development of native management plans; coordination with site stewards; development of annual budgets; development of performance standards, and identifying new sites and stewards for program expansion. Stantec's implementation services include a full range of prairie restoration and management including preparing and installing new prairies and managing existing prairies through herbiciding, mowing, shrub removal; and prescribed burning. Currently there are over 100 acres of ROW within the prairie program in various stages of development.

Electric Transmission Line Projects

Managed support for environmental and GIS services to gain regulatory approvals for new transmission lines. Provided project support for: transmission line siting; critical issues analysis; route matrices; GIS data acquisition and mapping services, coordination of regulatory agency meetings, completion of field wetland delineations; threatened and endangered species; biological assessment and Section 404 permitting, CPCN approvals; community advisory and public workshop support, and expert witness testimony. LaSalle-Ottawa, LaSalle County, IL; Wood River Refinery, Madison County, IL; Rockwood-Big River, Jefferson County, MO; Saddle Creek 73, Franklin County, MO. Havana Rebuild, Mason County, IL

345 kV Transmission Line Project, Wisconsin

Arrowhead to Weston. Completed wetland delineations, threatened and endangered plant surveys, and habitat assessments along a 208 mile proposed new transmission line.

Endangered Species Support, Wisconsin

Conducted Karner Blue butterfly surveys (federally endangered) along transmission line right-of-ways.

Residential Development

Country View Estates, DeForest, Wisconsin

Completed wetland delineation/evaluation, wetland permitting, and mitigation planning in support of a 400-acre mixed residential/commercial/recreational development project.

* denotes projects completed with other firms

Jeffrey D. Kraemer W.P.I.T.

Senior Scientist / Project Manager

Northeast Neighborhood Plan, Fitchburg, Wisconsin

Developed wetland protection standards for the City of Fitchburg's NE Neighborhood Plan.

Wesenberg Development, New Glarus, Wisconsin

Conducted threatened and endangered plant species surveys, wetland delineations, and floristic quality assessment in support of the residential development.

Westwynde Development, Sun Prairie, Wisconsin

Completed wetland delineation/evaluations, wetland permitting, wetland mitigation planning, and upland prairie restoration planning in support of the residential development.

Westshore Development Restoration Design, Oconomowoc, Wisconsin

Designed a 30-acre upland habitat enhancement and wetland restoration plan in support of gaining regulatory approvals for residential development.

Warehouse / Light Industrial

Manufacturing Facility Expansion Project, Arcadia, Wisconsin

Developed and gained WDNR/USACE approval for 35-acre wetland mitigation plan in support of wetland impact application for expansion of the manufacturing facility; continue to monitor and coordinate implementation of mitigation plan.

Industrial Facility Expansion Project, Hustisford, Wisconsin

Completed wetland delineation/evaluation, wetland permitting, and wetland mitigation planning in support of the expansion of the industrial facility.

Trucking Facility Expansion, Franklin, Wisconsin

Completed wetland delineation/evaluation, wetland permitting, and wetland mitigation design for expansion of the trucking facility.

Jeffrey D. Kraemer W.P.I.T.

Senior Scientist / Project Manager

PUBLICATIONS

Presentation. Lake Koshkonong Wetlands: Diversity, Floristic Quality, and Community Mapping. *Lake Koshkonong Wetland Association*, 2006.

Presentation. Management of the Eastern Prairie Fringed Orchid in the Lake Koshkonong Wetlands. *Lake Koshkonong Wetland Association*, 2006.

Presentation. Lake Koshkonong Water Level Controversy: A Balance between Recreation and Wetland Protection. *WWA Annual Science Forum*, 2005.

Presentation. Lake Koshkonong Water Levels and Growth Rate of Trees in Bordering Floodplain Forests.. *Lake Koshkonong Wetland Association*, 2005.

Presentation. Floodplain forest hydrology and management implications: Lake Koshkonong as a case study. *Wisconsin Wetlands Association Annual Science Forum*, 2004.

Kraemer, J. Using wetland plants as indicators of fine scale variation in hydrology: the plant community-environment relationship in sedge meadows. *Master's Thesis defense*, 2003.

Presentation. Effects of invasive plant species on natural communities. *UW-Milwaukee, Biology Department*, 2001.