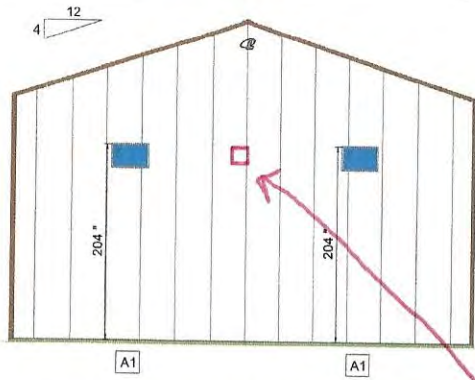
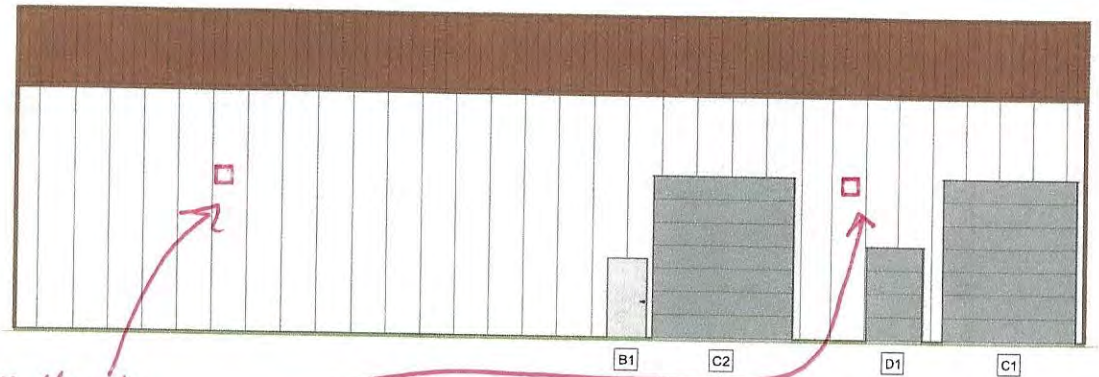


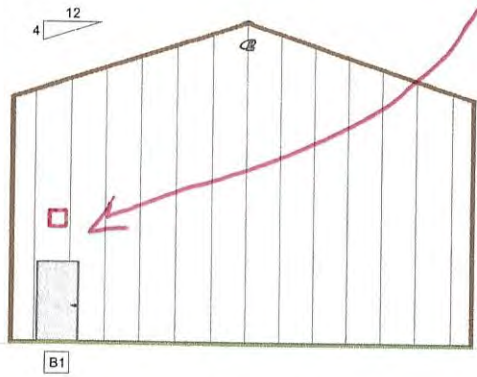
8' Arbor Vitae  
 for screening.



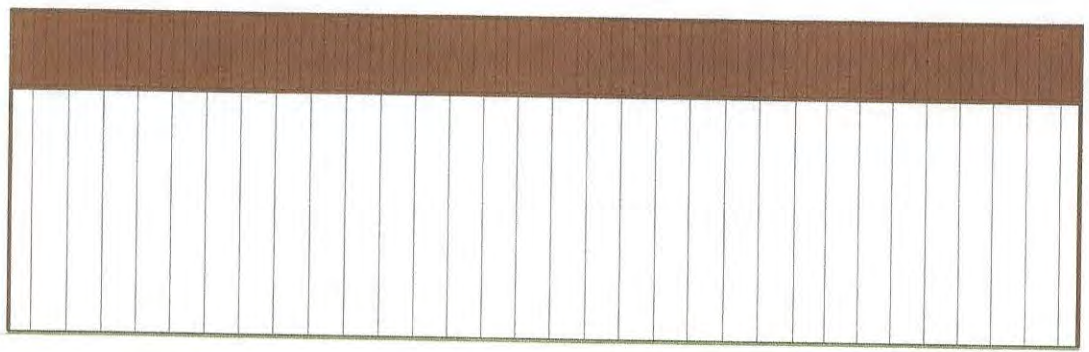
**A2** ENDWALL 1 ELEVATION - *West*



**B2** SIDEWALL 1 ELEVATION - *South*



**C2** ENDWALL 2 ELEVATION - *East*



**D2** SIDEWALL 2 ELEVATION - *North*

*Mini Wallpacks*

OPENING SCHEDULE

ID	MODEL	NOMINAL
A1	VINYL FIXED THERMAL PANE W/ EZ-V FLASHING	36x80
B1	WLK DOOR 5100 SOLID	36x80
C1	14' HIGH OVERHEAD DOOR OPENING	144x168
C2	14' HIGH OVERHEAD DOOR OPENING	144x168
D1	OVERHEAD DOOR OPENING - CUSTOM	60x96



DEALER INFO.  
 Meigs Inc  
 Po Box 412  
 Black Earth, WI 53515-0412

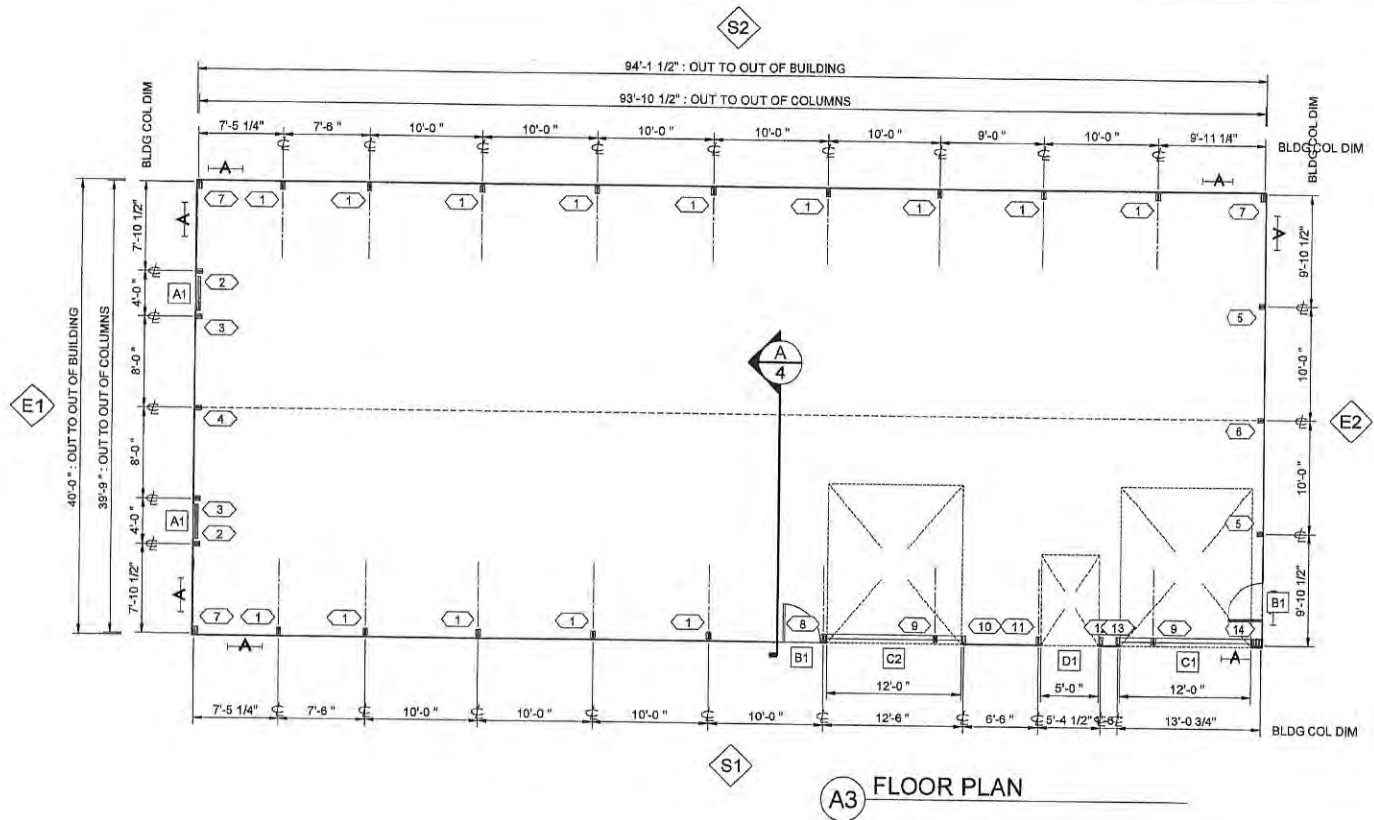
CUSTOMER INFO.  
 Krantz Electric  
 2650 N. Nine Mile Road  
 Verona, WI 53593

BUILDING DESCRIPTION  
 40'-0" x 94'-1" x 20'-1"  
 Uni-Frame Embedded  
 QP121720

Customer Approval  
 \_\_\_\_\_  
 (initials)  
 DATE:

Bldg Direction  
  
 (Mark North)

PROJ: R49A-15111-06-00  
 PROPOSAL DRAWINGS ONLY  
Not Intended for Construction Purposes  
 The information presented in this drawing is based on a preliminary design using the input provided. The final design is subject to Lester Engineering review.  
 \* NOT TO SCALE \*



COLUMN SCHEDULE

COLUMN		FOOTING				ANCHOR					
ID	PART	SHAPE	LENGTH	BASE	SIZE	TYPE	YDS/BS	DET	TYPE	BR/BLTS	DET
1	C003	FS888	28-00-00	-70	8x28	POURED	0.1058	EF203	BLOCK	-	EF211
2	692230	FE866	30-00-00	-56	8x18	POURED	0.0436	EF203	BLOCK	-	EF211
3	692232	FE866	32-00-00	-88	8x18	POURED	0.0436	EF203	BLOCK	-	EF211
4	681434	FE866	34-00-00	-81	8x18	POURED	0.0436	EF203	BLOCK	-	EF211
5	C004	FE866	30-00-00	-55	8x18	POURED	0.0436	EF203	BLOCK	-	EF211
6	C005	FE866	34-00-00	-81	8x18	POURED	0.0436	EF203	BLOCK	-	EF211
7	C006	FE866	28-00-00	-61	8x18	POURED	0.0436	EF203	BLOCK	-	EF211
8	C007	FS888J8	28-00-00	-70	8x28	POURED	0.1058	EF203	BLOCK	-	EF211
9	C008	FS888	6-07-12	178.75	-	HEADER	-	-	(2) PHD2A	-	FO354
10	C009	J8FS88	28-00-00	-70	8x24	POURED	0.0776	EF203	BLOCK	-	EF211
11	C010	FS888	28-00-00	-61	8x28	POURED	0.1056	EF203	BLOCK	-	EF211
12	C011	FS888	28-00-00	-61	8x18	POURED	0.0436	EF203	BLOCK	-	EF211
13	C012	FS88J8	28-00-00	-61	8x24	POURED	0.0776	EF203	BLOCK	-	EF211
14	C013	J8P888FE866	28-00-00	-55	8x24	POURED	0.0776	EF203	BLOCK	-	EF211

OPENING SCHEDULE

ID	MODEL	COLOR	NOMINAL	ROUGH	FRAME DET	FINISH DET
A1	VINYL FIXED THERMAL PANE W/ EZ-V FLASH	B/WHT	36x24	36x24	KB432	102455
B1	WLK DOOR 6103 SOLID	B/WHT	36x80	40.3125x81.125	KC432	102035
C1	14' HIGH OVERHEAD DOOR OPENING		144x188		7	101675
C2	14' HIGH OVERHEAD DOOR OPENING		144x188		7	101675
D1	OVERHEAD DOOR OPENING - CUSTOM		60x96		7	101675



DEALER INFO.  
Meigs Inc  
Po Box 412  
Black Earth, WI 53515-0412

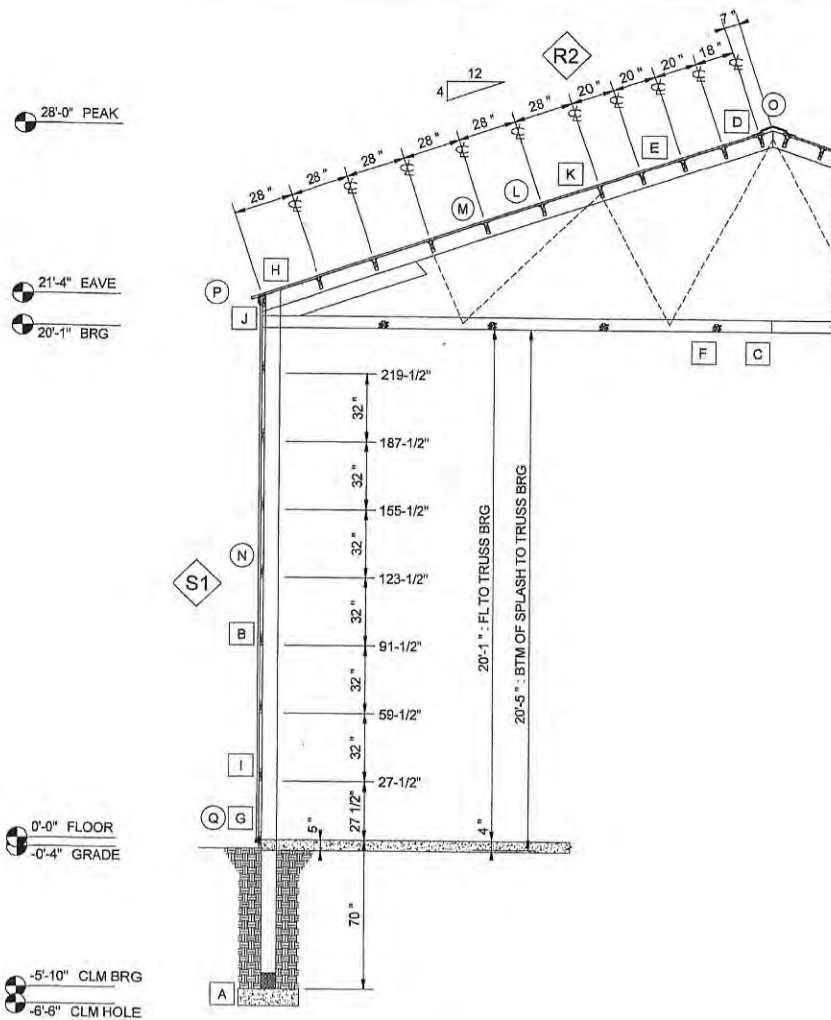
CUSTOMER INFO.  
Krantz Electric  
2650 N. Nine Mile Road  
Verona, WI 53593

BUILDING DESCRIPTION  
40'-0" x 94'-1" x 20'-1"  
Uni-Frame Embedded  
QP121720

Customer Approval  
  
(Initials)  
DATE:

Bldg Direction  
  
(Mark North)

PROJ: R49A-15111-06-00  
PROPOSAL DRAWINGS ONLY  
Not Intended for Construction Purposes  
The information presented in this drawing is based on a preliminary design using the input provided. The final design is subject to Lester Engineering review.  
\* NOT TO SCALE \*



**A4** SIDEWALL S1 SECTION  
51'-0" FROM E1

**A4 - SIDEWALL S1 SCHEDULE** □ ○

ID	LOCATION	DESCRIPTION	DETAILS
A	FOOTING	28" DIA X 8" THK - POURED	EF203
B	COLUMN	FS888 - ANCHOR: BLOCK	EF211
C	TRUSS	1-PLY 40'-0" TRUSS 2X8 TC / 2X6 BC	-
D	PURLIN	2X6 LESTER NO.1	GA122
E	RIDGE PURLIN	2X6 LESTER NO.1	GA122
F	BTM CHD BRACE	2X4 SPF NO.2	GA176
DESIGN DEAD LOAD: 1 PSF - SPACING: 1 @ 58; 7 @ 52; 1 @ 58			
G	SPLASH PLANK	2X8 SYP NO.2 TRD 0.14 MCA-C	FF417
H	EAVE NAILER	2X6BEV DFL NO.2	IF130
I	WALL GIRT	2X6 DFL/SYP M-23/2400 MSR 1.8E	FF437
J	DIAPHRAGM	EAVE DIAPHRAGM HARDWARE	IF204
K	DIAPHRAGM	RIDGE DIAPHRAGM HARDWARE	GA447
L	R2 INSUL.	DRIPSTOP MOISTURE CONTROL	JF050
M	R2 FINISH	UNI-RIB 28GA - AZ50 SMP	JF044
N	S1 FINISH	UNI-RIB 28GA - AZ50 SMP	MF044
O	RIDGE TRIM	#152 SOLID RIDGECAP	JF705
P	EAVE TRIM	#170 STANDARD EAVE	JF130
Q	BASE TRIM	#190 BOTTOM CLOSURE	MF113




DEALER INFO.  
Meigs Inc  
Po Box 412  
Black Earth, WI 53515-0412

CUSTOMER INFO.  
Krantz Electric  
2650 N. Nine Mile Road  
Verona, WI 53593

BUILDING DESCRIPTION  
40'-0" x 94'-1" x 20'-1"  
Uni-Frame Embedded  
QP121720

Customer Approval  
  
  
(Initials)  
DATE:

Bldg Direction  
  
(Mark North)

PROJ: R49A-15111-06-00  
PROPOSAL DRAWINGS ONLY  
Not Intended for Construction Purposes  
The information presented in this drawing is based on a preliminary design using the input provided. The final design is subject to Lester Engineering review.  
\*NOT TO SCALE\*



Color: Bronze

Weight: 7.2 lbs

**Project:**

**Type:**

**Prepared By:**

**Date:**

**Driver Info**

**LED Info**

Type	Constant Current	Watts	26W
120V	0.26A	Color Temp	5000K (Cool)
208V	0.16A	Color Accuracy	72 CRI
240V	0.14A	L70 Lifespan	100,000
277V	0.12A	Lumens	3,484
Input Watts	29.10W	Efficacy	119.7 lm/W

**Technical Specifications**

**Listings**

**UL Listed:**

Suitable for wet locations. Suitable for mounting within 1.2m (4ft) of the ground.

**DLC Listed:**

This product is listed by Design Lights Consortium (DLC) as an ultra-efficient premium product that qualifies for the highest tier of rebates from DLC Member Utilities. DLC Product Code: P0000170I

**LED Characteristics**

**Lifespan:**

100,000-hour LED lifespan based on IES LM-80 results and TM-21 calculations

**Color Consistency:**

7-step MacAdam Ellipse binning to achieve consistent fixture-to-fixture color

**Color Stability:**

LED color temperature is warranted to shift no more than 200K in color temperature over a 5-year period

**Color Uniformity:**

RAB's range of Correlated Color Temperature follows the guidelines of the American National Standard for Specifications for the Chromaticity of Solid State Lighting (SSL) Products, ANSI C78.377-2017.

**Construction**

**IP Rating:**

Ingress Protection rating of IP66 for dust and water

**Finish:**

Formulated for high durability and long-lasting color

**Ambient Temperature:**

Suitable For use in 40°C (104°F)

**Cold Weather Starting:**

Minimum starting temperature is -40°C (-40°F)

**Green Technology:**

Mercury and UV free. RoHS-compliant components.

**Other**

**Patents:**

The WPLED design is protected by U.S. Pat. D634878, Canada Pat 134878, China Pat. CN301649064S.

**Equivalency:**

Equivalent to 175W Metal Halide

**Buy American Act Compliance:**

RAB values USA manufacturing! Upon request, RAB may be able to manufacture this product to be compliant with the Buy American Act (BAA). Please contact customer service to request a quote for the product to be made BAA compliant.

## Technical Specifications (continued)

### Optical

#### BUG Rating:

B1 U0 G0

### Electrical

#### Driver:

Multi-chip 26W high output long life LED Driver  
 Constant Current, 720mA, Class 2, 6kV Surge  
 Protection, 100V-277V, 50-60 Hz, 100-240V.4  
 Amps.

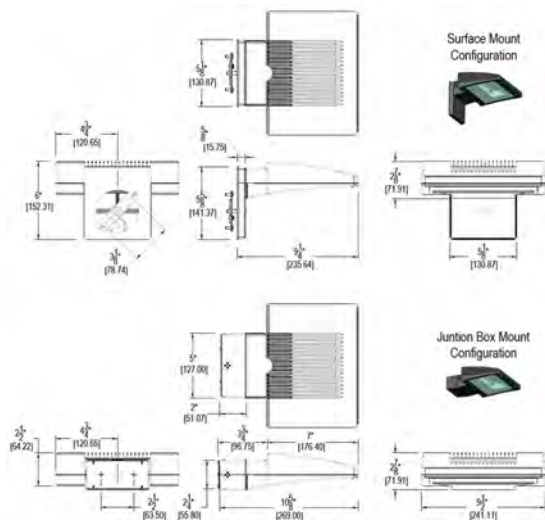
#### THD:

11.91% at 120V, 9.68% at 277V

#### Power Factor:

99.1% at 120V, 93.1% at 277V

## Dimensions



## Features

- Maintains 70% of initial lumens at 100,000-hours
- Weatherproof high temperature silicone gaskets
- Superior heat sinking with die cast aluminum housing and external fins
- 100 up to 277 Volts
- 5-Year, No-Compromise Warranty