

# LIDAR archaeology applications

Dane County Heritage Preservation Commission

November 26, 2024

# 2025 UW Department of Planning and Landscape Architecture / Dane County Planning and Development Project Proposal

## Work with

- ▶ Dane County Heritage Preservation Commission
- ▶ Ho-Chunk Nation
- ▶ Wisconsin Historical Society
- ▶ UW Department of Planning and Landscape Architecture (DPLA)
- ▶ UW Department of Information Technology (DoIT)
- ▶ and Dane County Land Information Office (DCLIO)

to develop a machine learning tool to scan digital elevation models to identify potential effigy mounds and other archaeological resources.



# Elmside Park Mounds

2022 Aerial  
Photography





# Elmside Park Mounds

2022 Digital  
Elevation Model  
(from LIDAR)



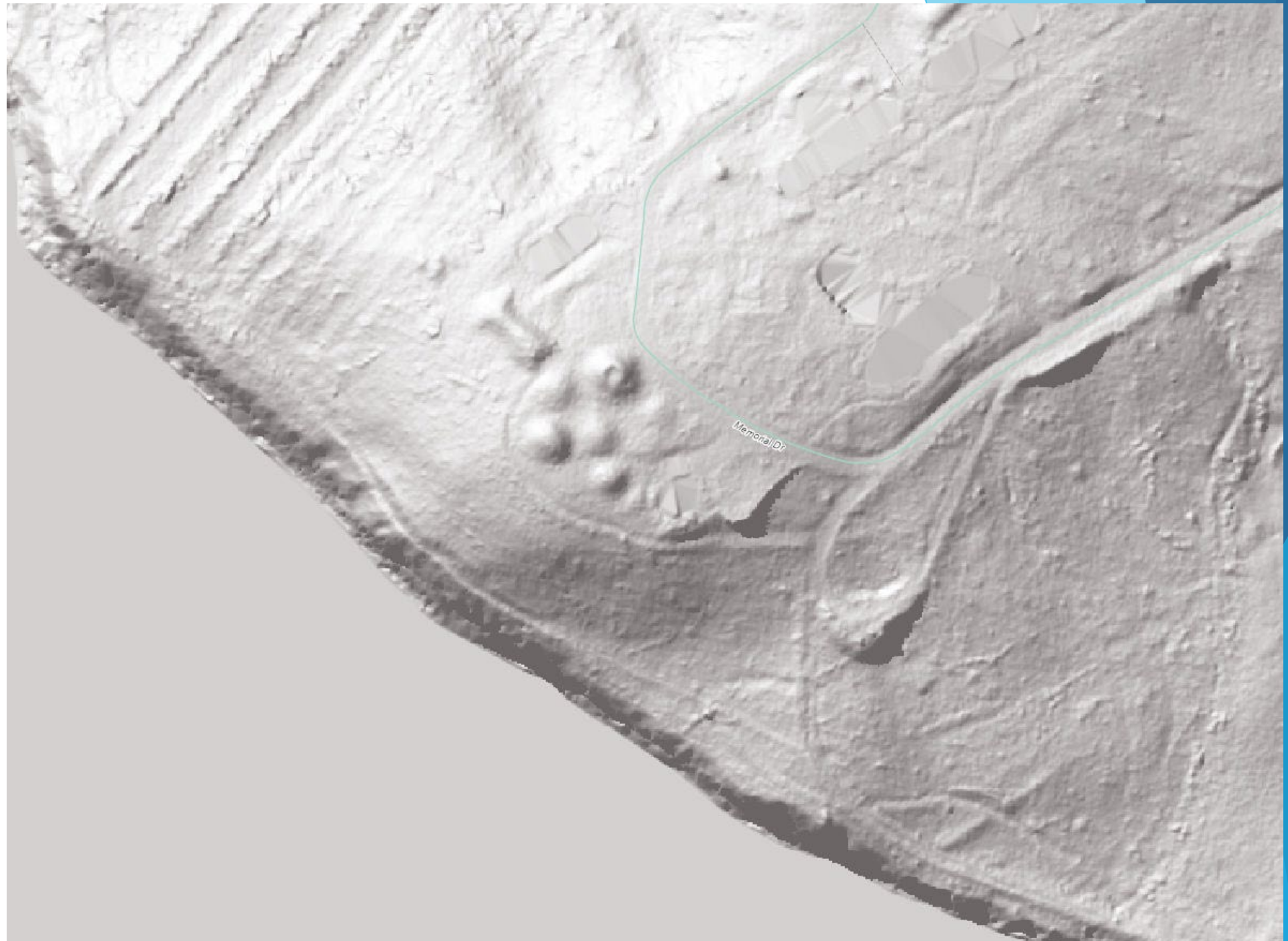


Mendota  
Mental  
Health  
(Farwell's  
Point)  
Mounds  
2022 Aerial  
Photography





Mendota  
Mental  
Health  
(Farwell's  
Point)  
Mounds  
2022 Digital  
Elevation Model  
(from LIDAR)





# Vilas Park Mounds

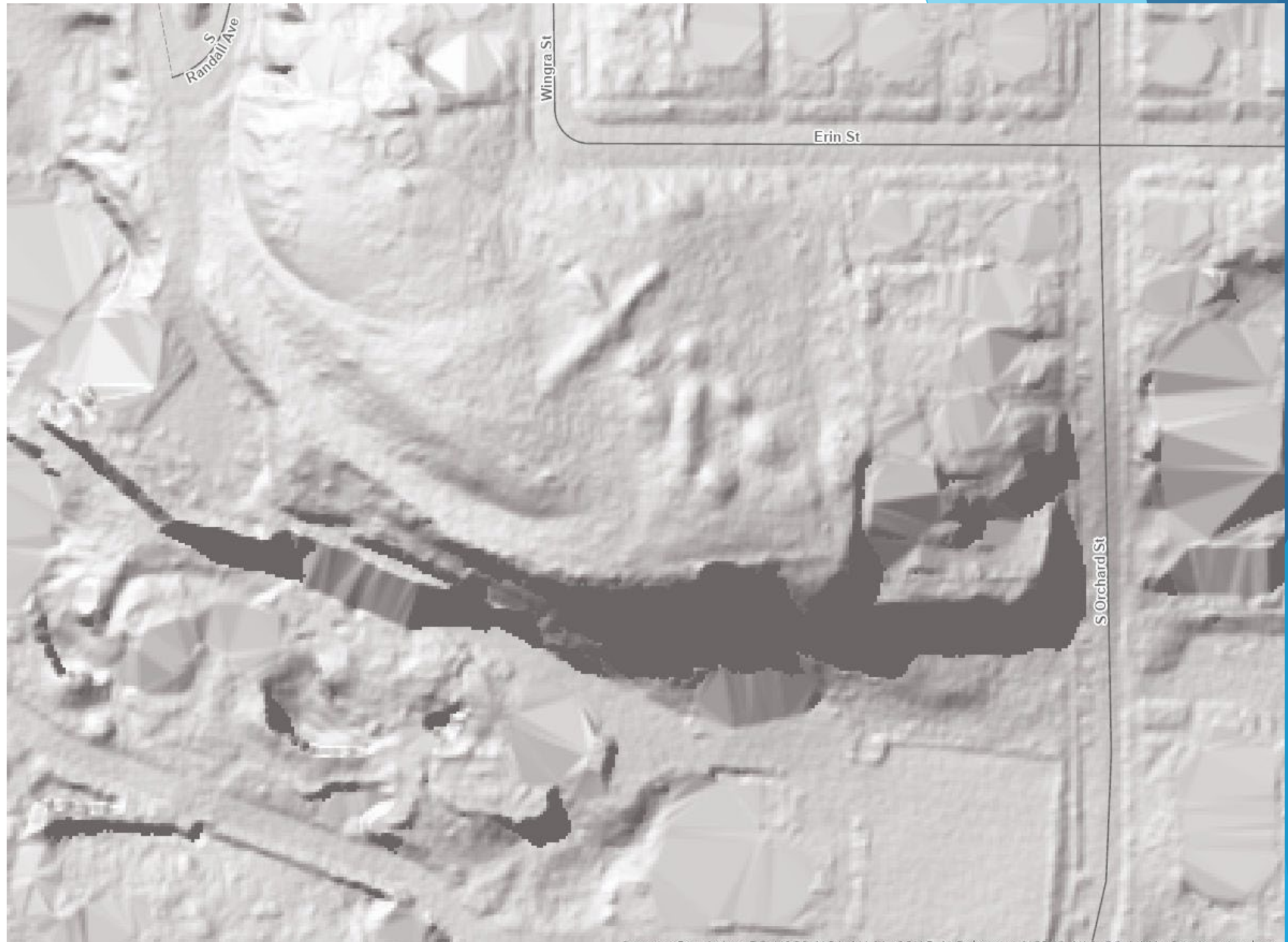
## 2022 Aerial Photography





# Vilas Park Mounds

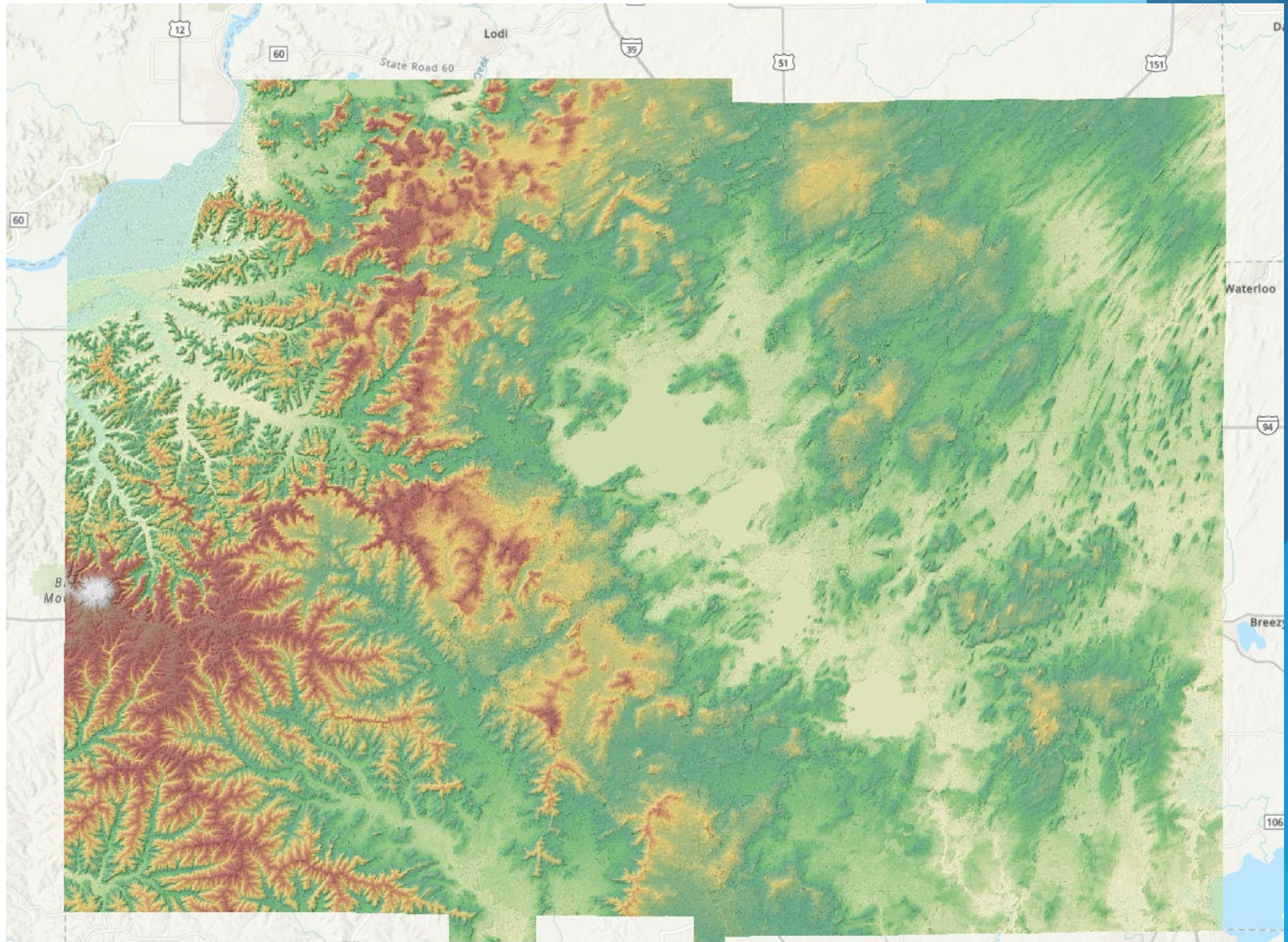
2022 Digital  
Elevation Model  
(from LIDAR)





# Questions:

- Can we scan the entire county digital elevation model for signs of possible mounds or other archaeological resources?
- Could we fly a special LIDAR survey focused on underwater resources?
- Can we add such data to the WHS archaeology inventory?
- How can we use such data for planning purposes, while protecting the resource?





# Project Resources for 2025

- ▶ Brian Standing, Senior Planner, Dane County Planning and Development
- ▶ Duha Jamal, Planning Assistant (.35 FTE), University of Wisconsin DPLA
  - ▶ [Jamal.duha@danecounty.gov](mailto:Jamal.duha@danecounty.gov)