

# Final Plat - 1000 Oaks Replat No. 2

## City of Madison

Plat consists of 37 lots, 6 outlots, 12.3 acres.

**Parks - No parks associated with this plat.**

**Parkways - none**

**Expressways - N/A**

**Major Highways -Mineral Point Rd. to the north.**

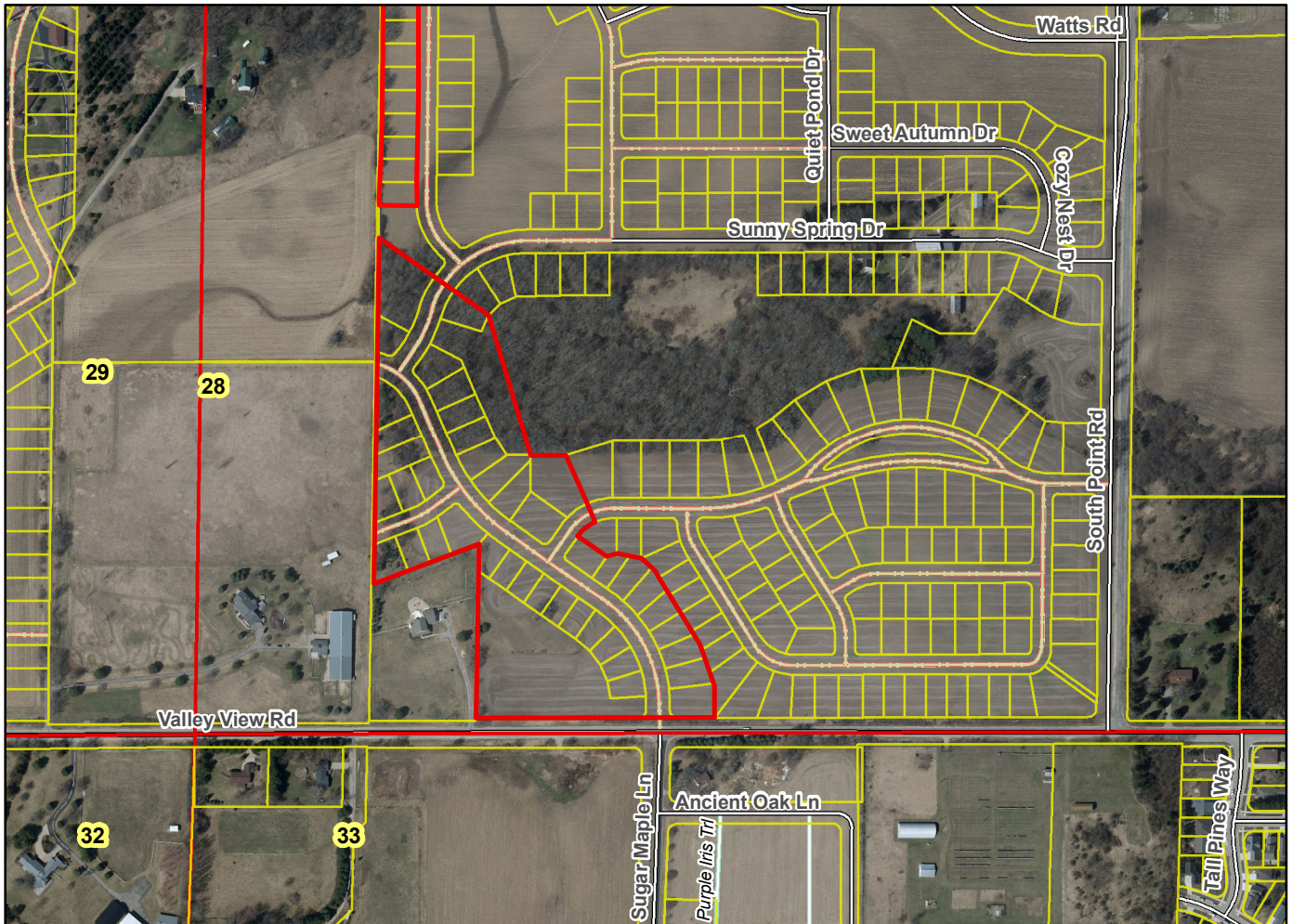
**Airports - Dane County Regional**

**Drainage Channels - All lots subject to public easements for drainage purposes.**

**Schools - established**

**Other Development**

Plats of subdivisions located in all other incorporated municipalities shall be submitted to the committee, as provided by section 236.12(2)(b) of the Wis. Stats., for the purpose of determining whether the committee has any objection to the plat. The basis for any objection to any such plat shall be that the plat conflicts with parks, parkways, expressways, major highways, airports, drainage channels, schools or other planned public developments.



Motion to certify with no objections: \_\_\_\_\_, Second: \_\_\_\_\_ Vote: \_\_\_\_\_