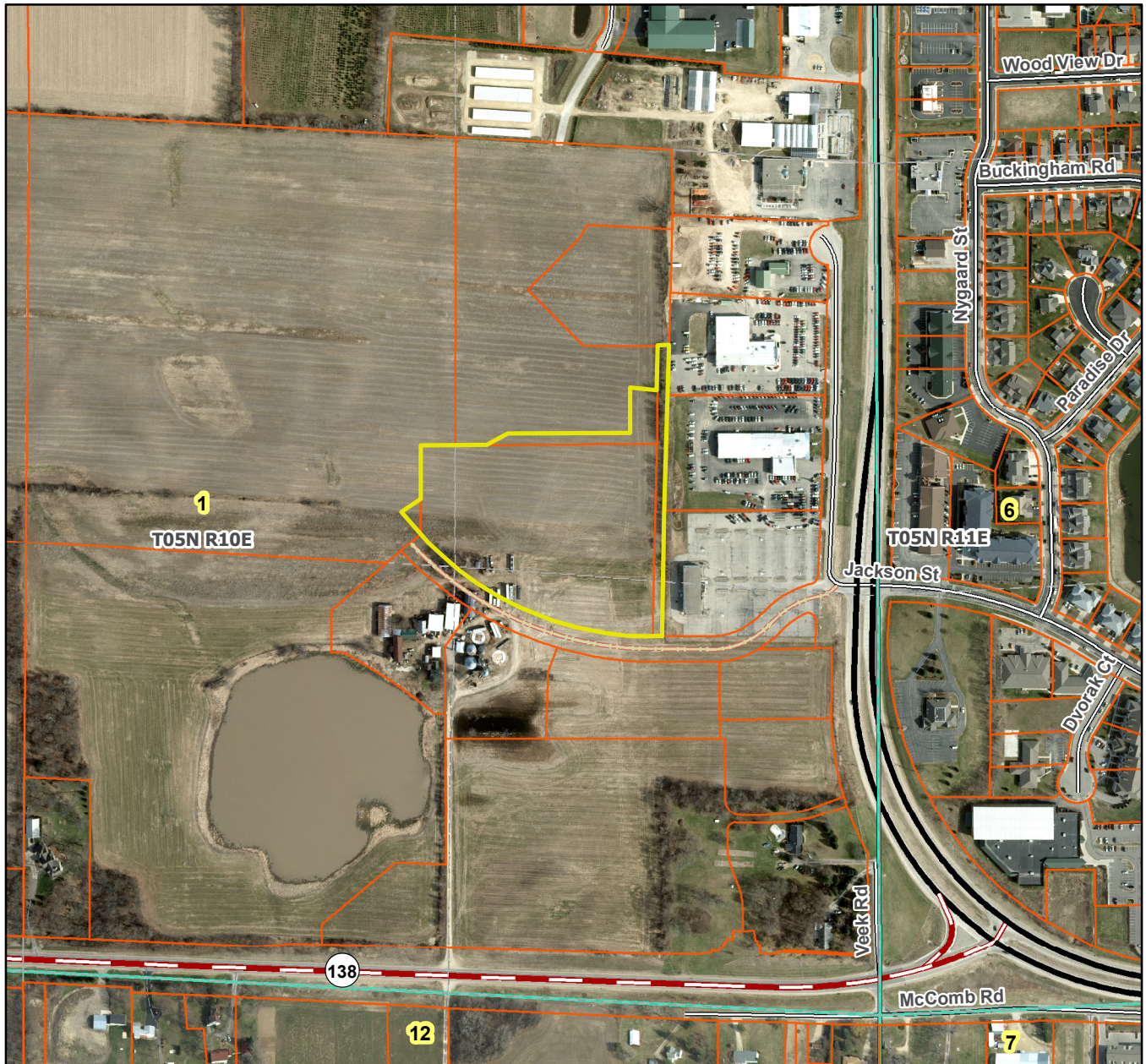


Kettle Park West City of Stoughton



Plat consists of 2 lots, 3 outlots 9.6 acres

Parks – None shown

Parkways –N/A

Expressways – N/A

Major Highways – STH 138 to the south and USH 51 to the east.

Airports – Dane County Regional Airport (20 mi)

Drainage Channels – Storm sewer easement and a drainage easement shown.

Schools – Established.