

# Final Plat - Kettle Park West-North Addition

## City of Stoughton

Plat consists of 22 lots, 24.3 acres.

Parks - OL 3 dedicated to the public for park purposes.

Parkways - none

Expressways - N/A

Major Highways - USH 51 to the east.

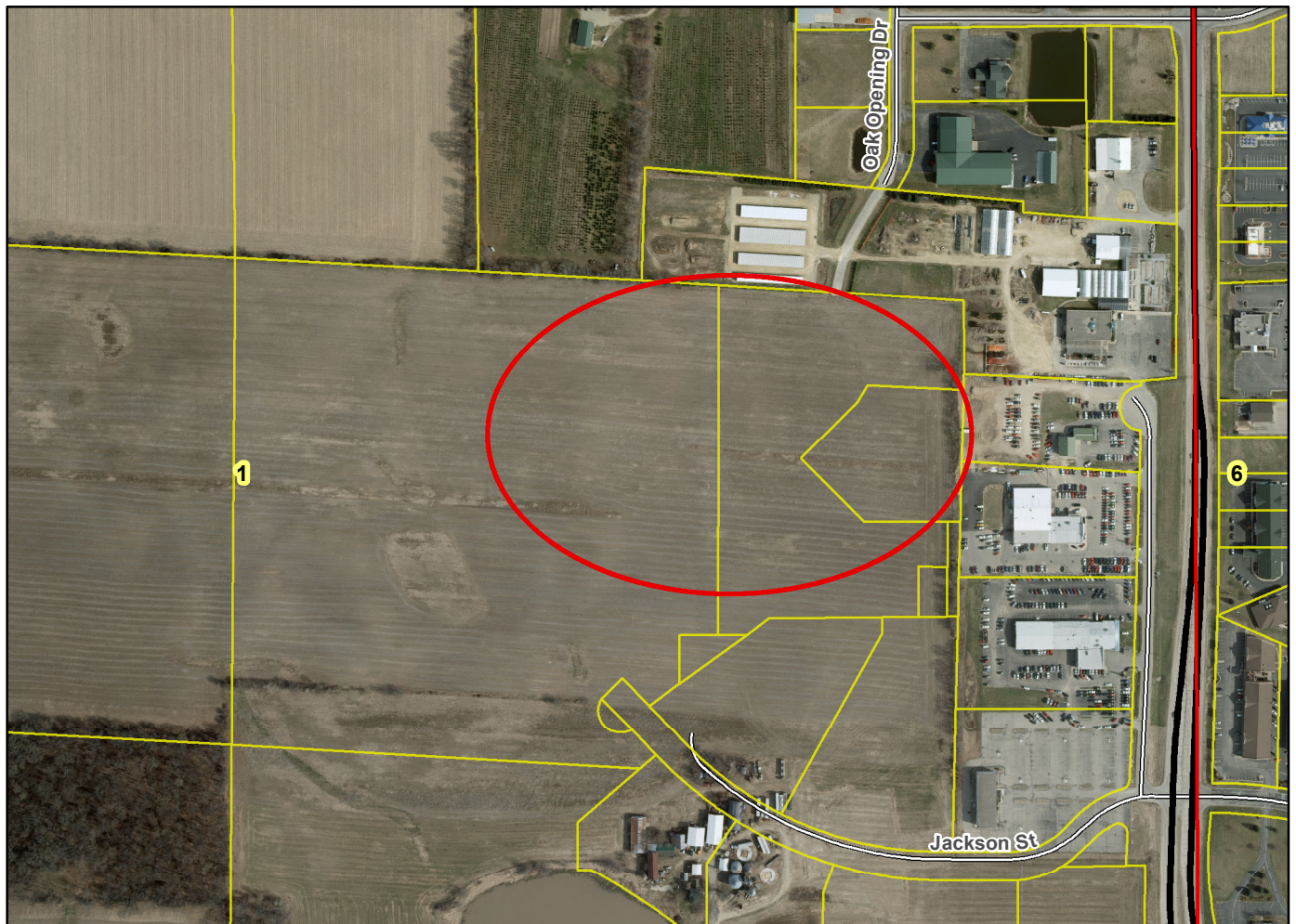
Airports - Dane County Regional

Drainage Channels - Drainage arrows are shown. OL 2 being dedicated to the public for stormwater management.

Schools - established

Other Development

Plats of subdivisions located in all other incorporated municipalities shall be submitted to the committee, as provided by section 236.12(2)(b) of the Wis. Stats., for the purpose of determining whether the committee has any objection to the plat. The basis for any objection to any such plat shall be that the plat conflicts with parks, parkways, expressways, major highways, airports, drainage channels, schools or other planned public developments.



Motion to certify with no objections: \_\_\_\_\_, Second: \_\_\_\_\_ Vote: \_\_\_\_\_