

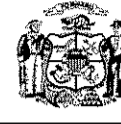
# VILLAGE AT AUTUMN LAKE REPLAT

LOTS 1-233, 241-519, OUTLOTS 1-15, OUTLOTS 18-39 AND VARIOUS PUBLIC RIGHT-OF-WAYS DISCONTINUED BY THE CITY OF MADISON RES-15 DOC. NO. \_\_\_\_\_ WITHIN VILLAGE AT AUTUMN LAKE, LOCATED IN THE NE1/4, SW1/4, SE1/4 OF THE NW1/4, AND THE NE1/4, NW1/4, SW1/4 AND THE SE1/4 OF THE SW1/4, AND THE NW1/4 AND THE SW1/4 OF SECTION 26, T8N, R10E, CITY OF MADISON, DANE COUNTY, WISCONSIN

There are no objections to this plat with respect to Secs. 236.15, 236.16, 236.20 and 236.21(1) and (2), Wis. Stats. as provided by s. 236.12, Wis. Stats.

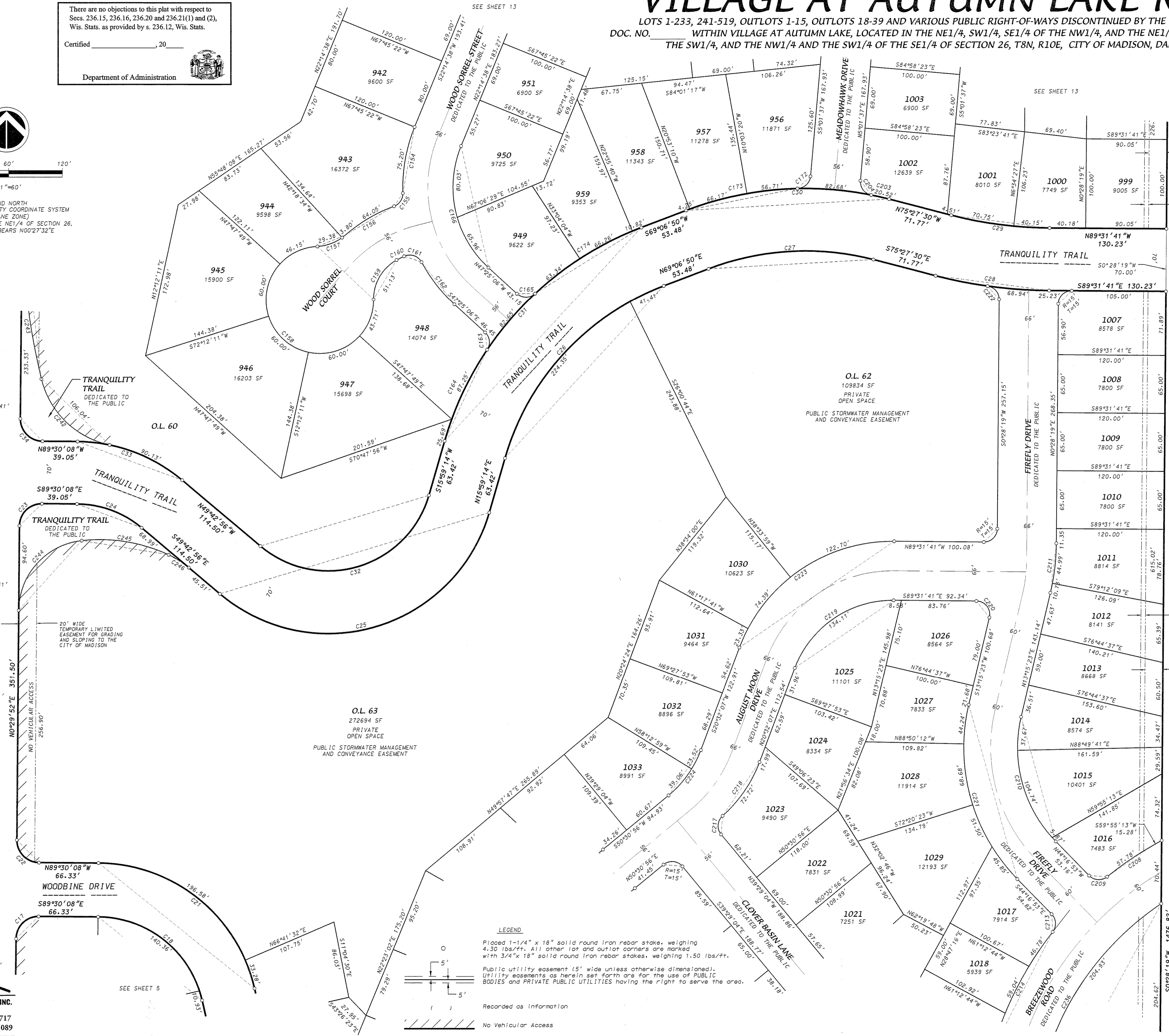
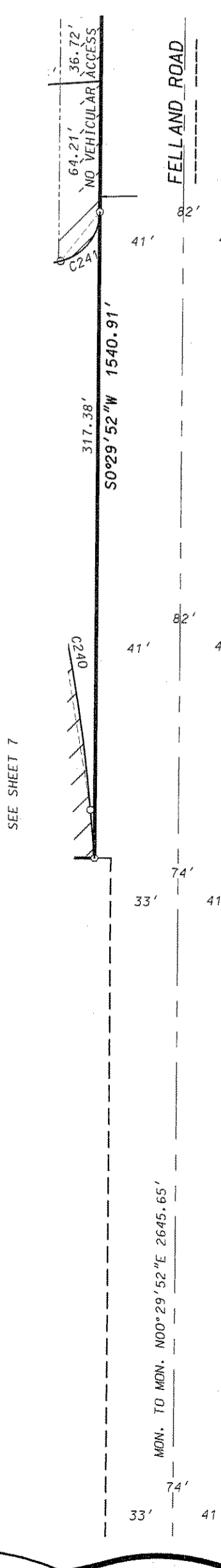
Certified \_\_\_\_\_, 20\_\_\_\_

Department of Administration



0 60' 120'  
1"=60'

GRID NORTH  
WISCONSIN COUNTY COORDINATE SYSTEM  
(DANE ZONE)  
WEST LINE OF THE NE1/4 OF SECTION 26,  
T8N, R10E BEARS N00°27'32"E



20' WIDE PUBLIC PEDESTRIAN AND BICYCLE PATH EASEMENT

5' WIDE PUBLIC DRAINAGE EASEMENT

5' WIDE PUBLIC DRAINAGE EASEMENT

20' WIDE PUBLIC PEDESTRIAN AND BICYCLE PATH EASEMENT



**LEGEND**

Placed 1-1/4" x 18" solid round iron rebar stake, weighing 4.30 lbs./ft. All other lot and outlot corners are marked with 3/4" x 18" solid round iron rebar stakes, weighing 1.50 lbs./ft.  
Public utility easement (5' wide unless otherwise dimensioned).  
Utility easements as herein set forth are for the use of PUBLIC BODIES and PRIVATE PUBLIC UTILITIES having the right to serve the area.

Recorded as Information  
No Vehicular Access

Received: 09/08/2015  
CPA  
27413  
0101

D'ONOFRIO KOTTKE AND ASSOCIATES, INC.  
7530 Westway Way, Madison, WI 53717  
Phone: 608.833.7550 • Fax: 608.833.1089  
YOUR NATURAL RESOURCE FOR LAND DEVELOPMENT

FN:14-07-117

SEE SHEET 5

SHEET 9 OF 21