

There are no objections to this plat with respect to Secs. 236.15, 236.16, 236.20 and 236.21(1) and (2), Wis. Stats. as provided by s. 236.12, Wis. Stats.

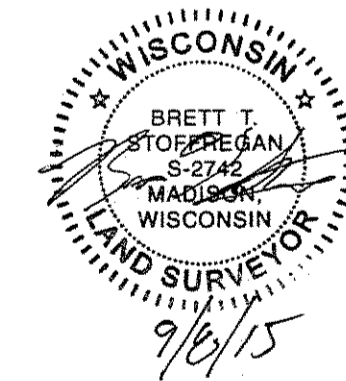
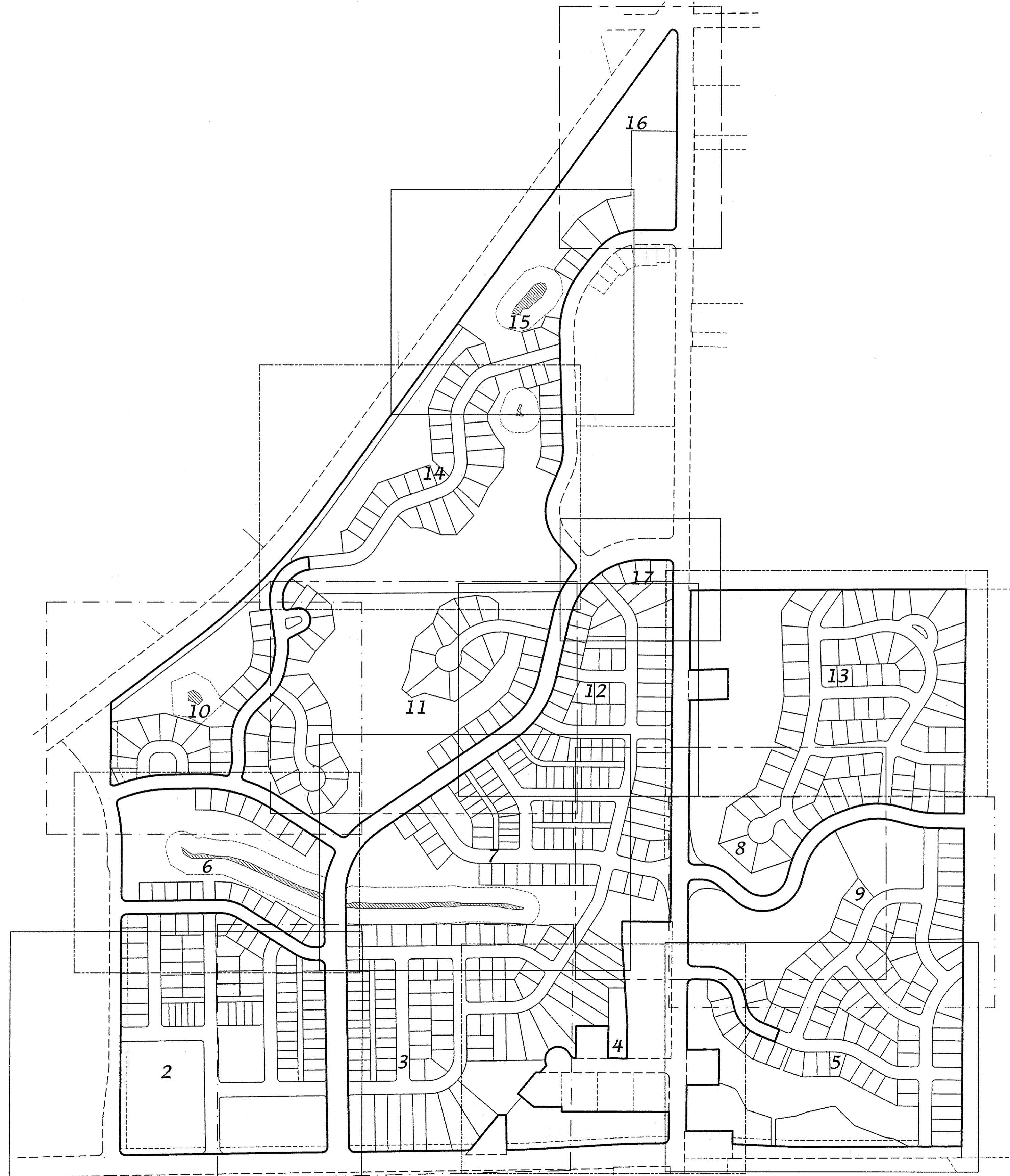
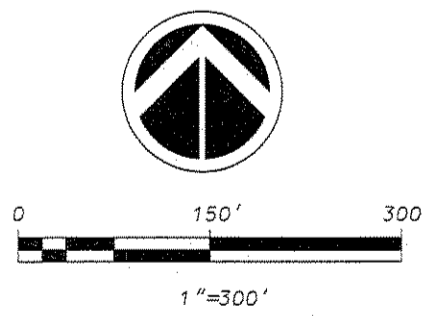
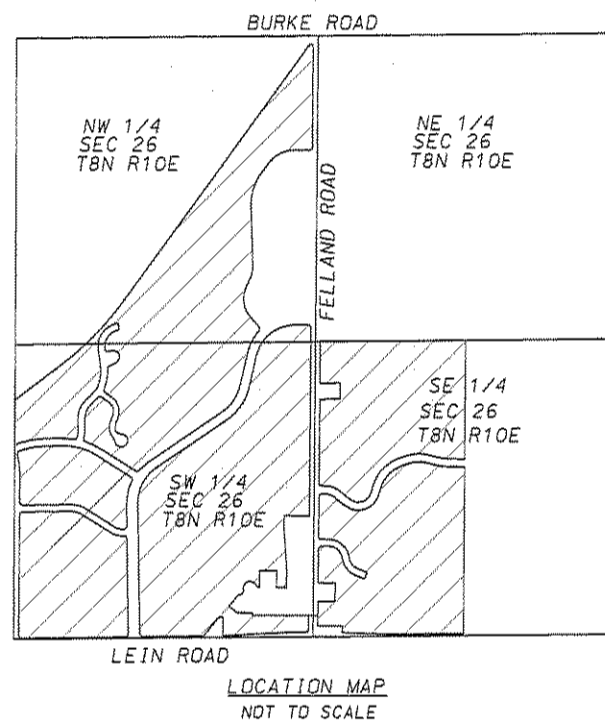
Certified _____, 20__

Department of Administration



VILLAGE AT AUTUMN LAKE REPLAT

LOTS 1-233, 241-519, OUTLOTS 1-15, OUTLOTS 18-39 AND VARIOUS PUBLIC RIGHT-OF-WAYS DISCONTINUED BY THE CITY OF MADISON RES-15
DOC. NO. _____ WITHIN VILLAGE AT AUTUMN LAKE, LOCATED IN THE NE1/4, SW1/4, SE1/4 OF THE NW1/4, AND THE NE1/4, NW1/4, SW1/4 AND THE SE1/4 OF THE SW1/4, AND THE NW1/4 AND THE SW1/4 OF THE SE1/4 OF SECTION 26, T8N, R10E, CITY OF MADISON, DANE COUNTY, WISCONSIN



Received: 09/08/2015
CFA

27413

D'ONOFRIO KOTTKE AND ASSOCIATES, INC.

7530 Westward Way, Madison, WI 53717
Phone: 608.833.7530 • Fax: 608.833.1089

YOUR NATURAL RESOURCE FOR LAND DEVELOPMENT

FN:14-07-117