

There are no objections to this plat with respect to Secs. 236.15, 236.16, 236.20 and 236.21(1) and (2), Wis. Stats. as provided by s. 236.12, Wis. Stats.

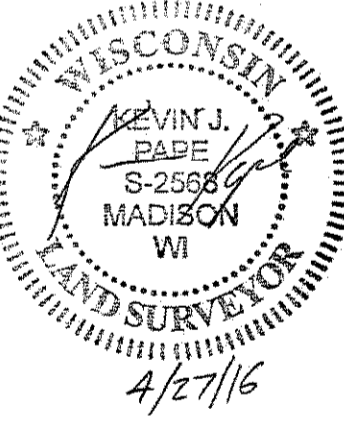
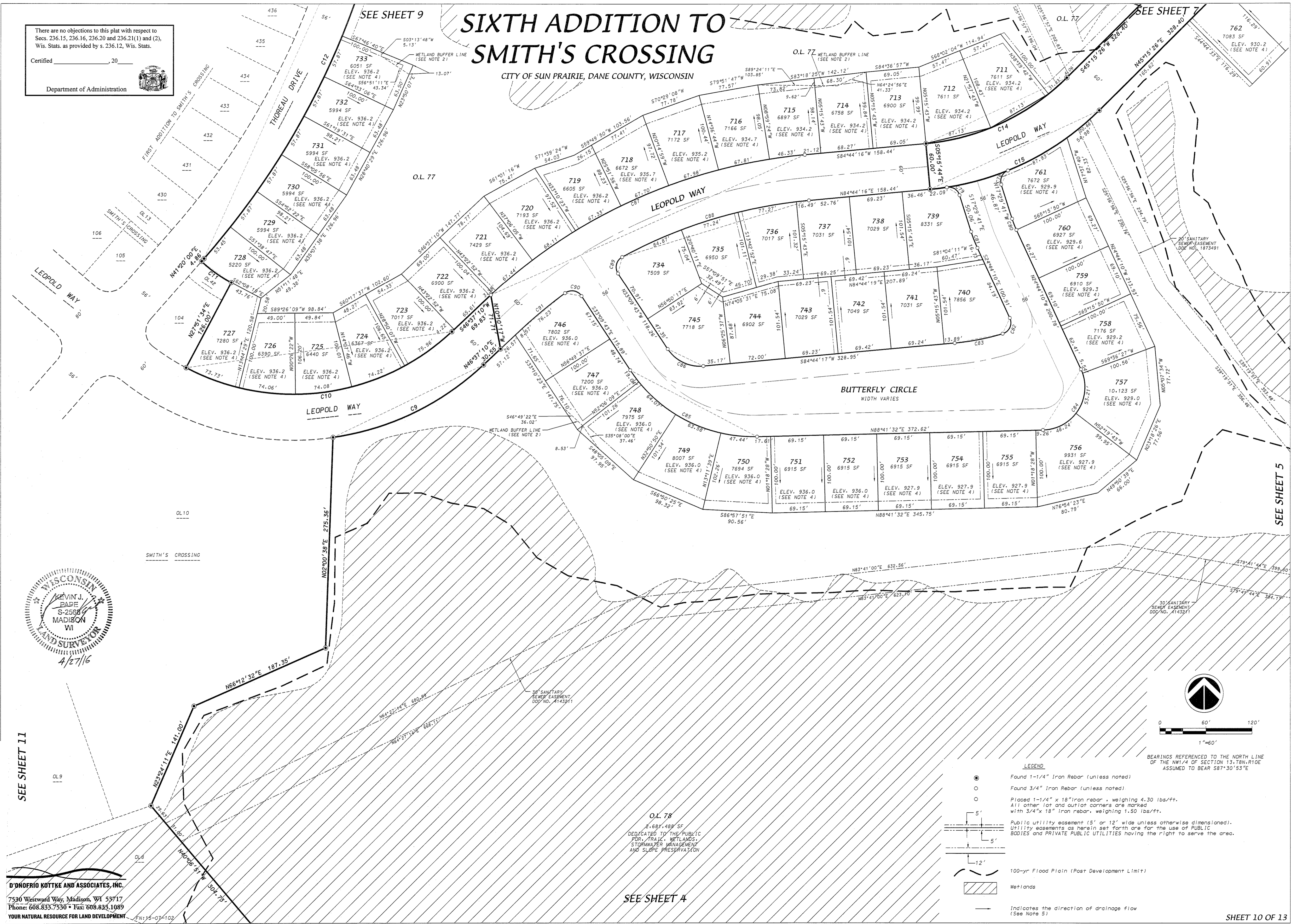
Certified _____, 20____

Department of Administration



SIXTH ADDITION TO SMITH'S CROSSING

CITY OF SUN PRAIRIE, DANE COUNTY, WISCONSIN

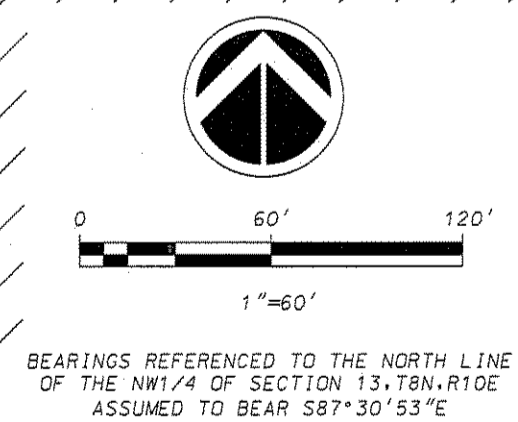


Received: 04/27/2016
CPA
27500
SEE SHEET 11

D'ONOFRIO KOTTKE AND ASSOCIATES, INC.
7530 Westward Way, Madison, WI 53717
Phone: 608.833.7530 • Fax: 608.833.1089
YOUR NATURAL RESOURCE FOR LAND DEVELOPMENT

LEGEND

- Found 1-1/4" Iron Rebar (unless noted)
- Found 3/4" Iron Rebar (unless noted)
- Placed 1-1/4" x 18" iron rebar, weighing 4.30 lbs/ft. All other lot and outlot corners are marked with 3/4" x 18" iron rebar, weighing 1.50 lbs/ft.
- Public utility easement (5' or 12' wide unless otherwise dimensioned). Utility easements as herein set forth are for the use of PUBLIC BODIES and PRIVATE PUBLIC UTILITIES having the right to serve the area.
- 100-yr Flood Plain (Post Development Limit)
- ▨ Wetlands
- Indicates the direction of drainage flow (See Note 5)



BEARINGS REFERENCED TO THE NORTH LINE OF THE NW1/4 OF SECTION 13, T8N, R10E ASSUMED TO BEAR S87°30'53"E

SEE SHEET 4