

# Dane County's Climate Action Plan

Dane County Environmental Council  
December 8, 2021



Kathy Kuntz, Director

# Office of Energy & Climate Change: *Next Step in a Long History of Leadership*



# Dane County Council on Climate Change

## 38 organizations with diverse perspectives

- 7 governments
- 3 utilities
- 7 businesses
- 2 agriculture organizations
- 4 community equity/justice organizations
- 6 environmental groups
- 3 UW-Madison groups
- 1 chamber of commerce
- Labor & law entities



# CAP: Pragmatic Yet Visionary

## Guiding Principles

- Equity & Justice
- Economic Benefits
- Health Benefits
- Ecosystem Benefits
- Adaptation & Resiliency
- Bridging the Rural & Urban Divide

*Look at the **art of the possible**... Identify where we want to be and **figure out how to get there**... Win-win solutions should be the focus... **Look at data, find solutions.***

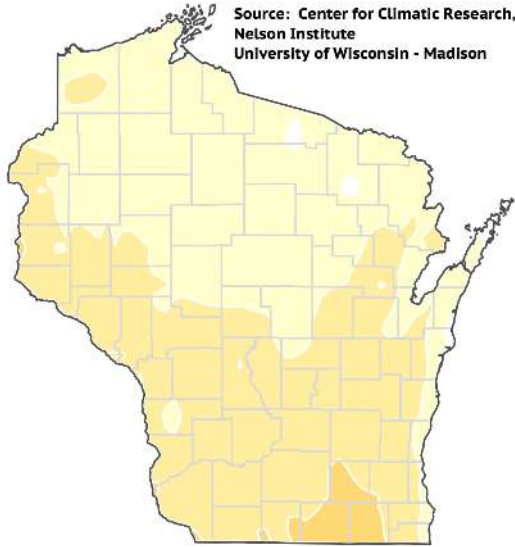
County Exec Joe Parisi, 1<sup>st</sup> Council Mtg



# WICCI: Dane County Will Get Hotter, Wetter

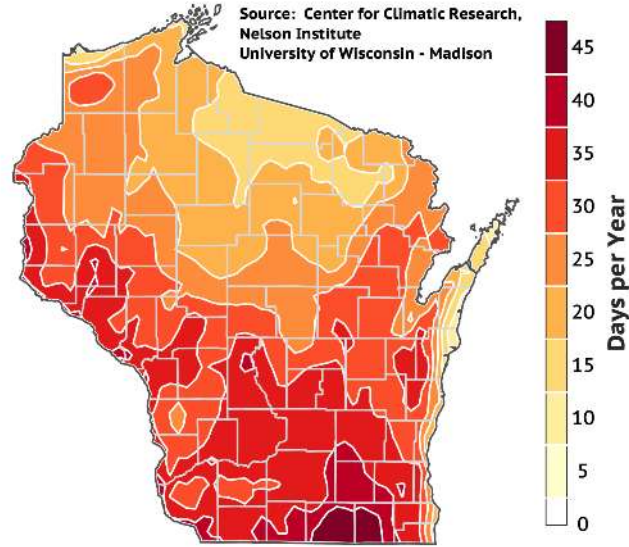
Days per Year with TMAX > 90°F  
1981-2010 Conditions (HISTORICAL)

Source: Center for Climatic Research,  
Nelson Institute  
University of Wisconsin - Madison



Days per Year with TMAX > 90°F  
2041-2060 Conditions (RCP85)

Source: Center for Climatic Research,  
Nelson Institute  
University of Wisconsin - Madison



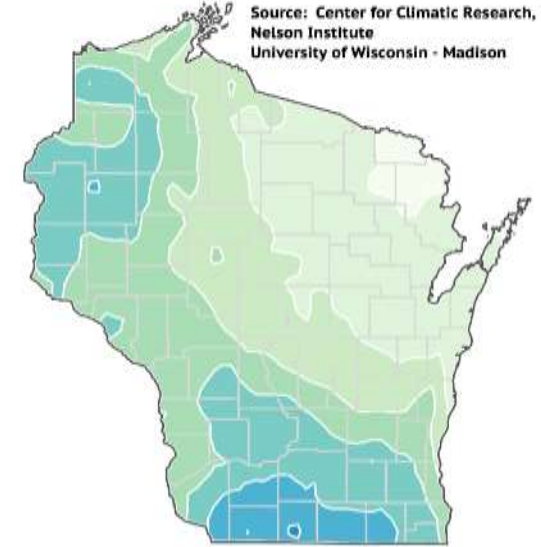
Days per 100 Years with PRCP > 5in  
1981-2010 Conditions (HISTORICAL)

Source: Center for Climatic Research,  
Nelson Institute  
University of Wisconsin - Madison



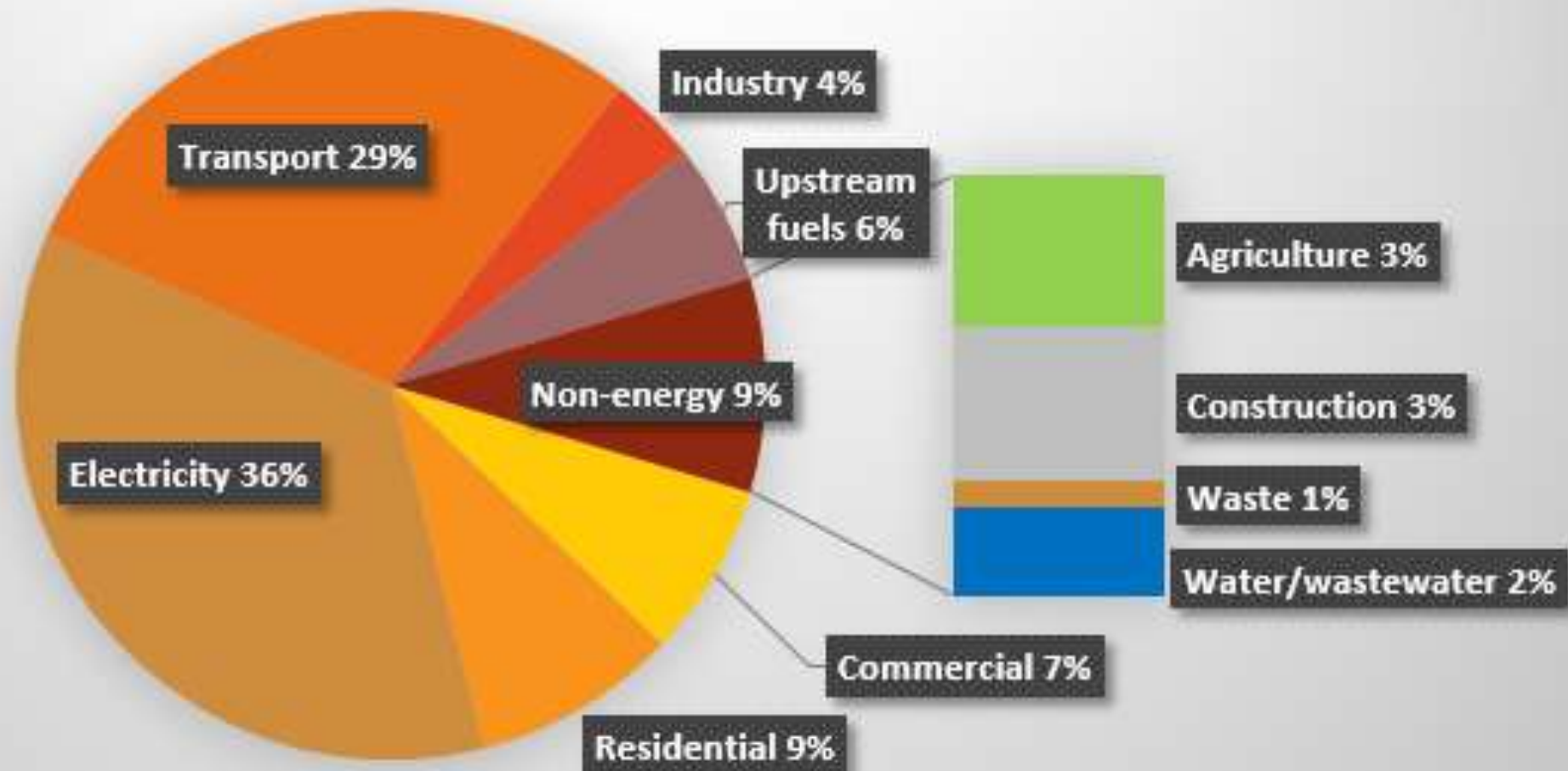
Days per 100 Years with PRCP > 5in  
2041-2060 Conditions (RCP85)

Source: Center for Climatic Research,  
Nelson Institute  
University of Wisconsin - Madison



# County-Wide Emissions (2016) – 7.5MMtons

## Base Year Dane County Emissions (CO2-equiv)



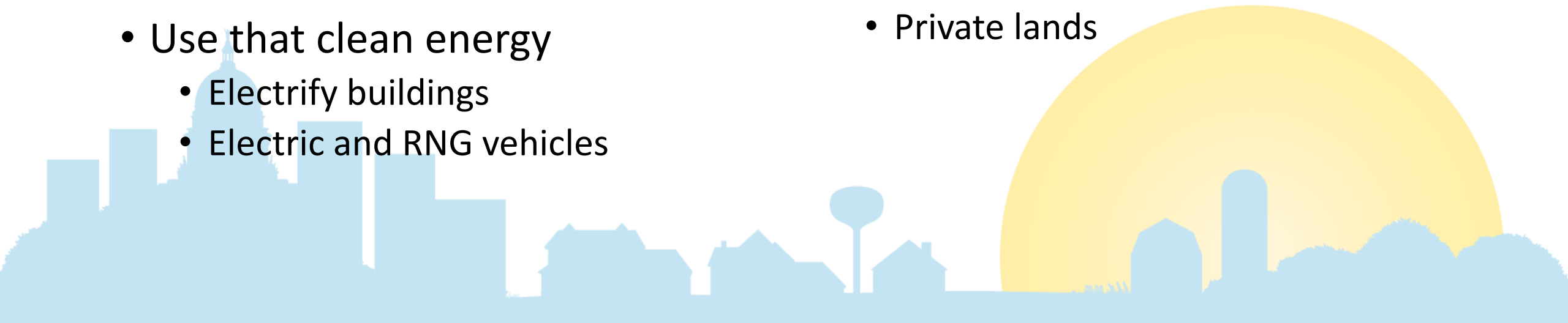
# Subject-Matter Expert Working Groups: 100+ Recommendations

## Reduce Emissions

- Eliminate waste → efficiency
- Clean energy sources
  - Electricity from solar, wind
  - RNG from landfill, manure
- Use that clean energy
  - Electrify buildings
  - Electric and RNG vehicles

## Increase Sequestration

- Afforestation, reforestation
  - Rural and urban
- Regenerative ag practices
  - County lands
  - Private lands



# Outcomes We're Pursuing

Emissions Targeted	Goal
Energy Usage	Reduce 2% annually by 2030, 3% by 2035 and 4% by 2040
Commercial building energy use	Reductions by 2025 with all new buildings using 75% less energy by 2040
Heat pumps	Convert ½ LP and oil heat homes by 2030; all by 2045 All new homes with heat pumps by 2040
Water – per capita demand	Decrease by 20% by 2030 and by 30% by 2040
Solar	1200 MW installed by 2030; with wind meet 100% of load by 2045
Wind	Meets half Dane County load by 2030; with solar meet 100% by 2045
Manure in anaerobic digesters	Half of all manure in county by 2030; 100% by 2050
Electric Vehicles (EVs)	57% sales share by 2040
Heavy-Duty Vehicles	60% use biogas by 2026
Transit buses	50% are electric by 2035
Vehicle Miles Traveled (VMTs)	15% reduction in total VMTs by 2050



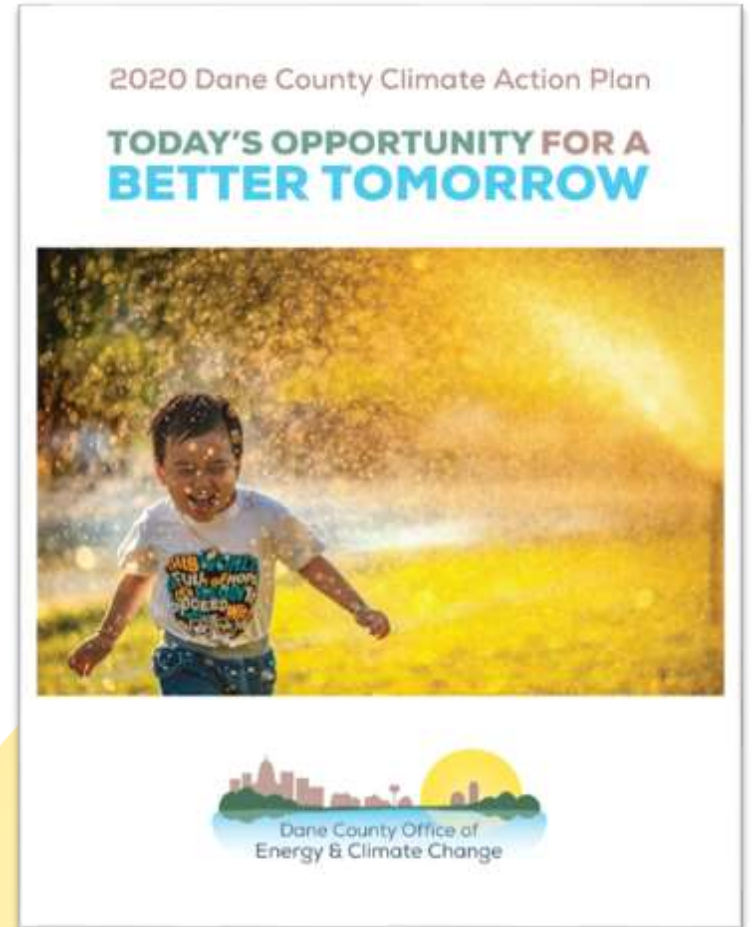


**Cut in half  
total  
countywide  
emissions  
by 2030**



# The CAP is just the beginning...

- Engage everyone
  - We are all part of the solution
  - Together we'll create a stronger Dane County
- Make it easy to take action
- Celebrate leadership
- Report on progress



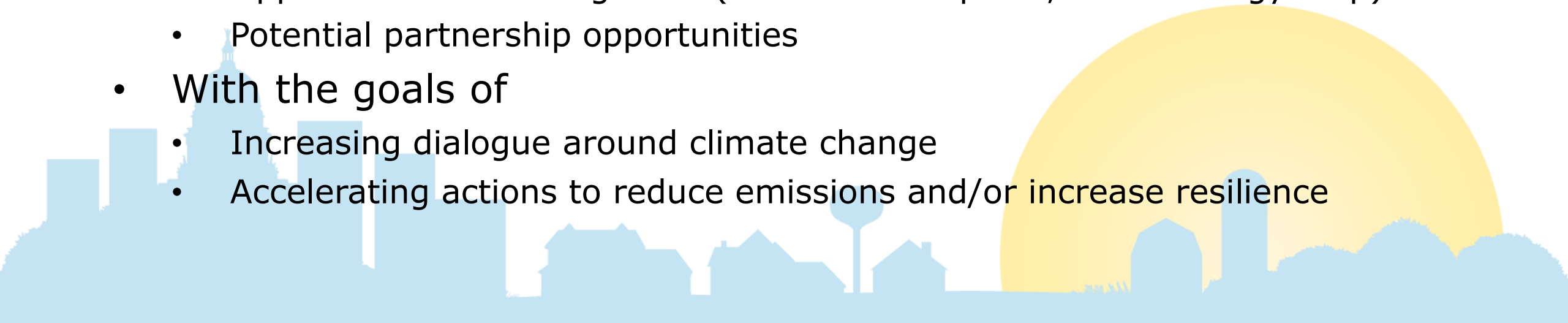
# How Can the Environmental Council Help?

- Expand our outreach efforts
- Collaborate on specific initiatives
- Your ideas!



# Expand Climate Conversations

- Outreach to
  - Environmental Council grantees
  - Local Friends groups
  - Other Council networks
- Outreach about
  - Available resources (PACE financing, solar grants, new federal funds)
  - Opportunities for recognition (Climate Champions, Clean Energy map)
  - Potential partnership opportunities
- With the goals of
  - Increasing dialogue around climate change
  - Accelerating actions to reduce emissions and/or increase resilience

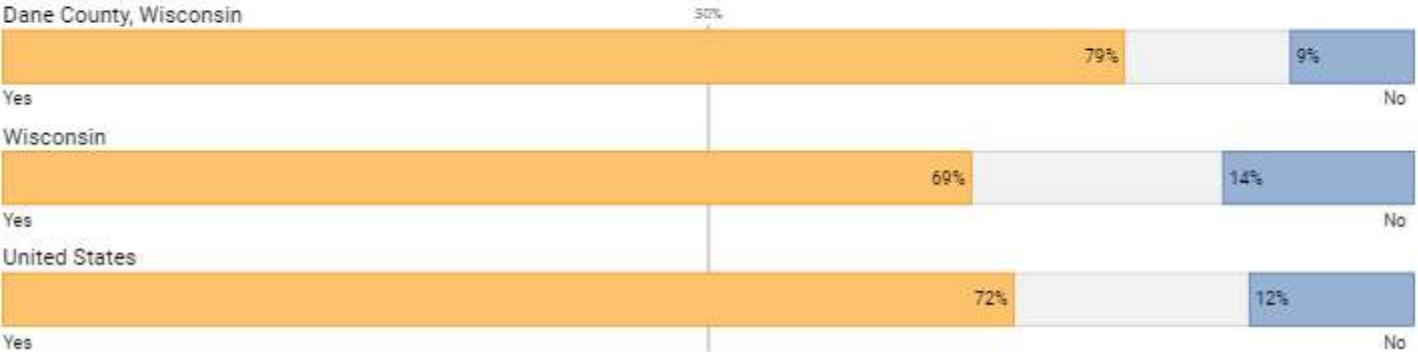
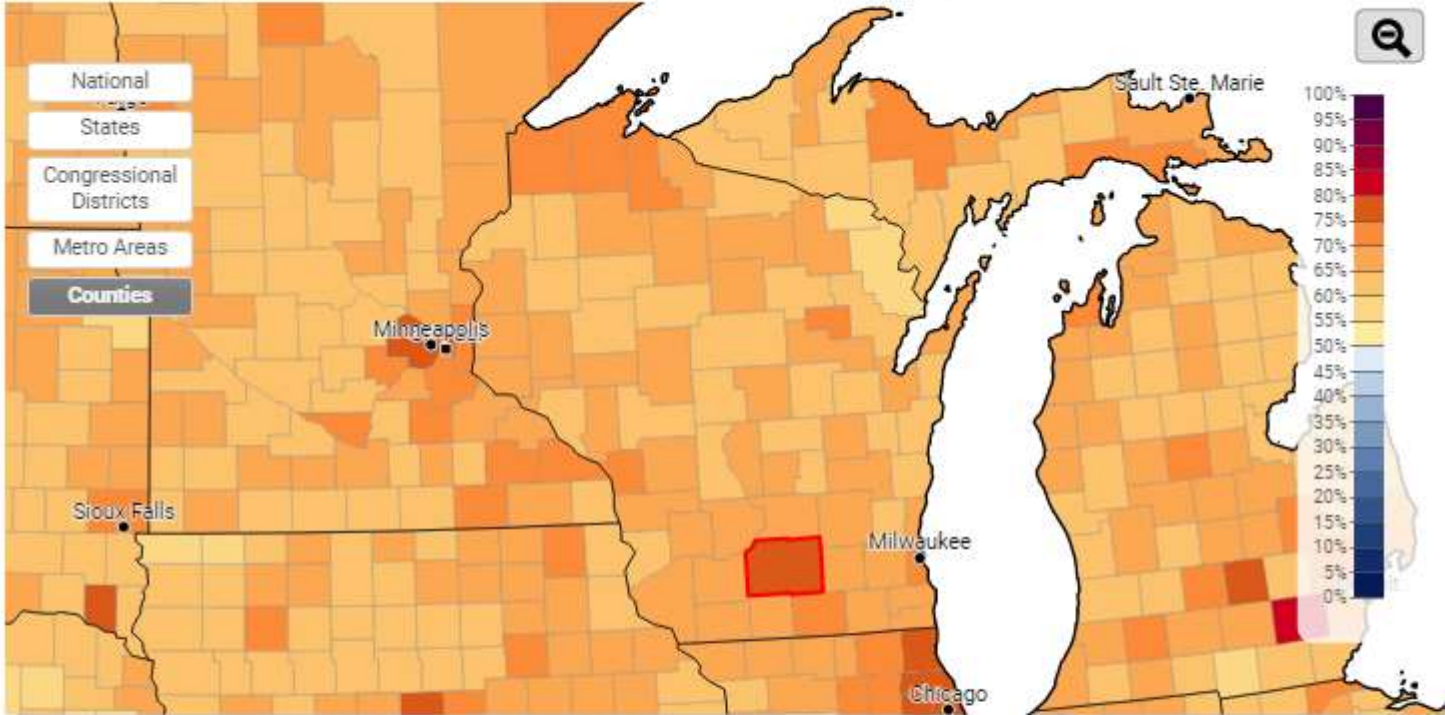


# Estimated % of adults who think global warming is happening (72%), 2020

Select Question: Global warming is happening | Absolute Value  
Click on map to select geography, or: Wisconsin | Dane County, Wisconsin | Un-Select

## Yale Climate Opinion Maps

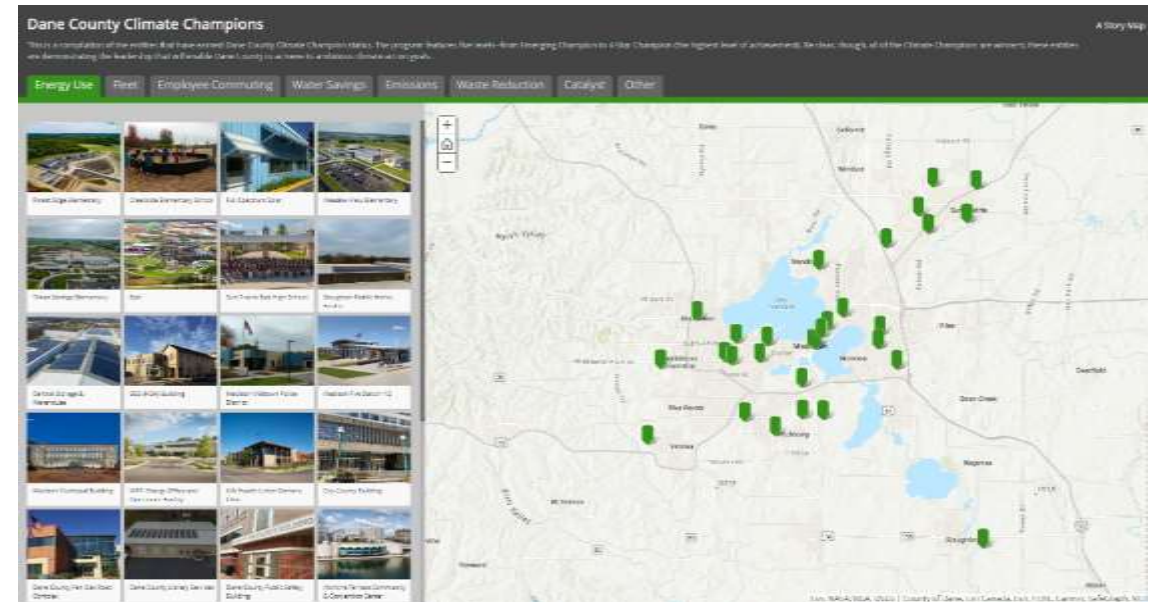
*About 8 in 10 people in Dane County believe global warming is happening*



<https://climatecommunication.yale.edu/visualizations-data/ycom-us/>

# Collaborate on Climate Champions

- Recognition for entities leading on
  - Energy, Water, Waste reductions
  - Fleet practices
  - Employee commuting
  - Carbon emissions
  - Sustainable agricultural practices
  - Catalyzing public action
  - Other efforts
- Talk up the program
- Co-create 2022 Category for Habitat Restoration / Land Practices



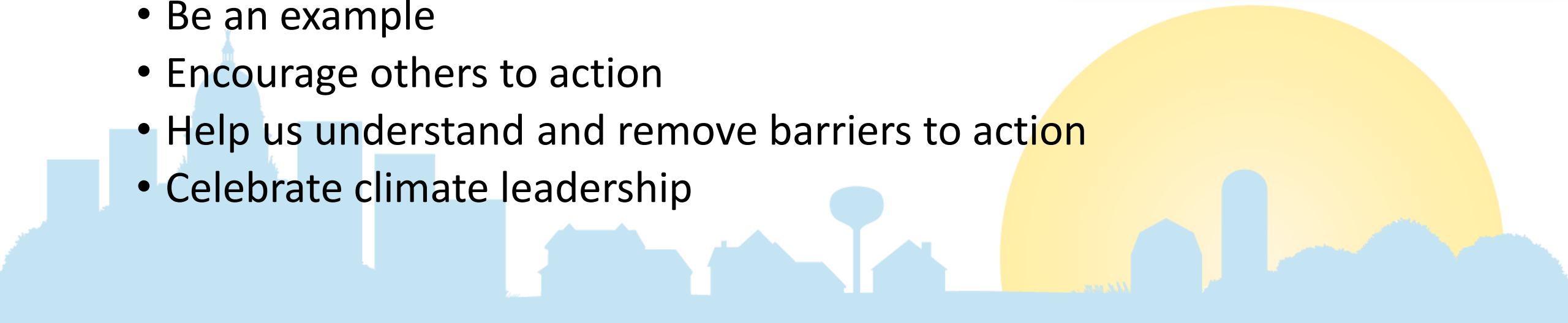
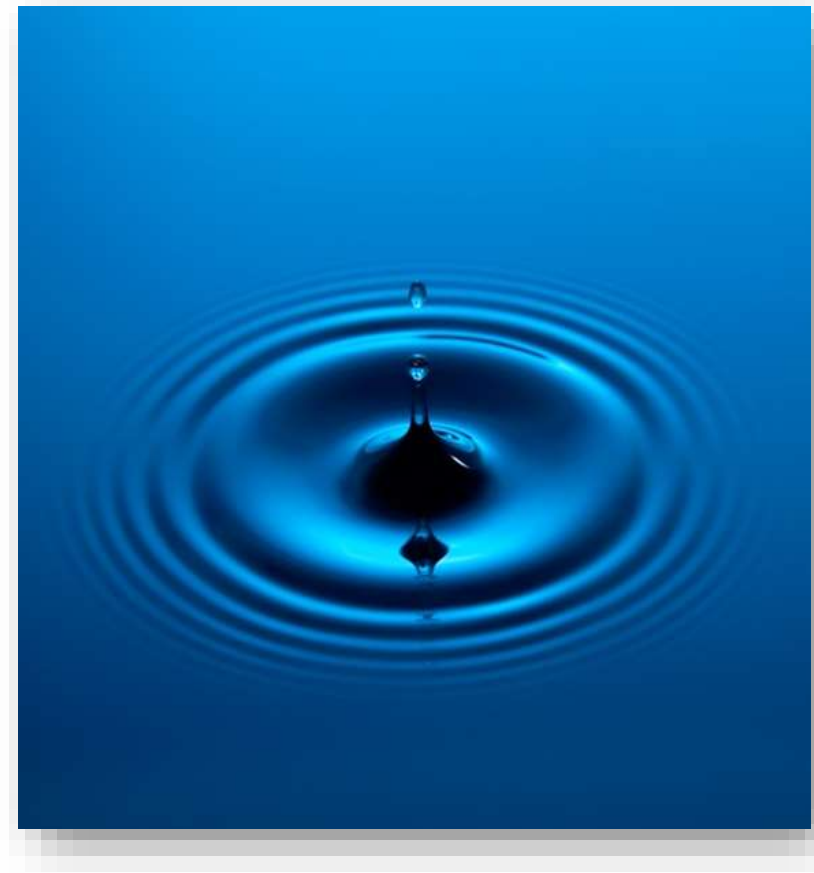
# Collaborate on Ecosystem Benefits

- CAP principle: maximize ecosystem benefits
- Various environmental actions yield climate benefits too
  - Prairie restoration for water quality and flood mitigation also sequesters carbon
  - Manure digesters for water quality also reduce emissions
- Useful to explore this more fully
  - Land & Water Resources launching effort to measure sequestration in 2022
  - What ecosystem benefits accrue from various climate efforts?
  - What other environmental efforts deliver climate benefits?



# Partnerships Are Critical

- We are actively working with
  - Faith communities
  - Workplace green teams
  - Youth
- Empower our partners
  - Be an example
  - Encourage others to action
  - Help us understand and remove barriers to action
  - Celebrate climate leadership





# Questions? Comments?

Kathy Kuntz

[Kuntz.Kathryn@countyofdane.com](mailto:Kuntz.Kathryn@countyofdane.com)

[DaneClimateAction.org](http://DaneClimateAction.org)

