

Classroom / Meeting Space (2500 S.F.)

Class activities = Max. 30 Students (1,200 S.F.)
 Grade Activities = Approx. 75 Students (1,500 S.F.)
 Workshops / Meetings = 150 Students (2,250 S.F. w/ operable partition)
 Summer School = 3 or 4 separate groups of 20 kids each (2,000 S.F.)
 Used for crafts, projects, demonstrations, meetings, presentations, etc.
 Indoor space in case of inclement weather
 Host regional FFA contests, events, etc.
 Storage = 250 S.F.

Animal Space, Housing (3300 S.F.) + Demonstration (1,500 S.F.)

Approx. housing needs: 16 Pigs, 4 Steers, 5 Sheep/Goats, and Chickens / Rabbits at a time (1500 + 800 + 400 + 50 = Approx. 2,800 S.F.)
 Feed Storage Space = 200 S.F.
 Equipment / Tack Space = 200 S.F.
 Animal Demonstration / Work Space = Indoors/covered, dirt floor (1,500 S.F.)
 Mechanical / "Milk Room" Space = 100 S.F.
 Indoor / Outdoor Flexible
 Interior is multipurpose
 Verify proper headroom for machinery
 Manure Storage Plan
 Host regional shows, contests, events, etc.

Garden Usage (150 S.F.)

Space for volunteers to wash veggies, hook up hoses, access to restrooms
 Tool Storage = 150 S.F.
 Food Pantry Garden Area
 School Lunch garden area with room to expand
 Space for individual community garden plots
 Compost pile

Kitchen Needs (600 S.F.)

Serving Kitchen / Concession type facility for all day workshops = 150 S.F.
 Washing, processing garden produce (counter area) = 100 S.F.
 Small Class food demos. Could be tied to outdoor picnic area = 350 S.F.
 (Potentially could be connected to CR building or use Demonstration Space)
 Are there considerations to think of now if a charter school is even a remote possibility?

Restrooms (200 S.F.)

Access when the rest of the buildings are locked
 Most class activities would have 15-50 people onsite at a time (For educational uses, 1 WC required per 50 persons) (2) Single-WC
 Toilet Rooms: 100 S.F. + "Custodial" space: 100 S.F. = 200 S.F.
 Only a few days a year where there would be over 100. One (each) is okay for now - should design drain field for larger capacity and perhaps plan for another WC at at each initial toilet room

Equipment Storage (1,000 S.F. + Future)

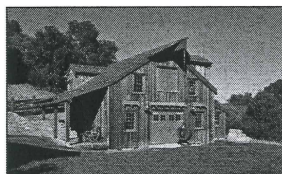
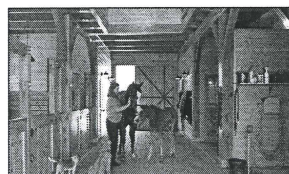
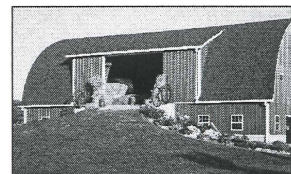
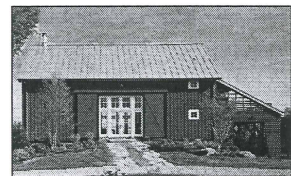
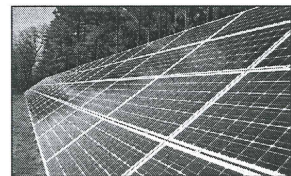
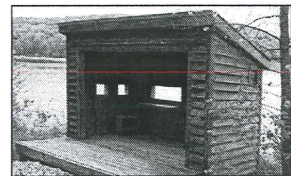
Minimally Space for: tractor, mower, 4 wheeler, (2) galors, small trailer, maintenance equipment = 800 - 1,000 S.F.

Parking

Minimum of 4 buses & 20-30 cars at once, with options to expand

Other Maybes

Covered picnic shelter space for classes to eat lunch on field trips
 Natural Resources Tree House/ Club House
 Sleeping Space for overnight retreats
 Possible Options:
 Small group, 10-20 people = 2,000-2,500 S.F. with fireplace
 Entire School Grade Level, 75 Students = Could use classroom?



SCHOOL DISTRICT OF
CAMBRIDGE

**SCHOOL DISTRICT OF CAMBRIDGE
 SEVERSON LEARNING CENTER - SITE PLAN
 RETTLER PROJECT #14.016 - UPDATED 12.31.14**

RETTLER
 corporation

3317 Business Park Drive, Stevens Point, WI 54482
 Telephone: 715 - 341 - 2633, Fax: 715 - 341 - 0431
 email: info@rettlr.com, website: www.rettl.com