

Final Plat - Western Addition to 1000 Oaks

City of Madison

Plat consists of 94 lots, 6 outlots, 38.26 acres.

Parks - Outlot 18 shown as dedicated to the public for park purposes.

Parkways - None shown.

Expressways - N/A

Major Highways - Mineral Point Road to the north.

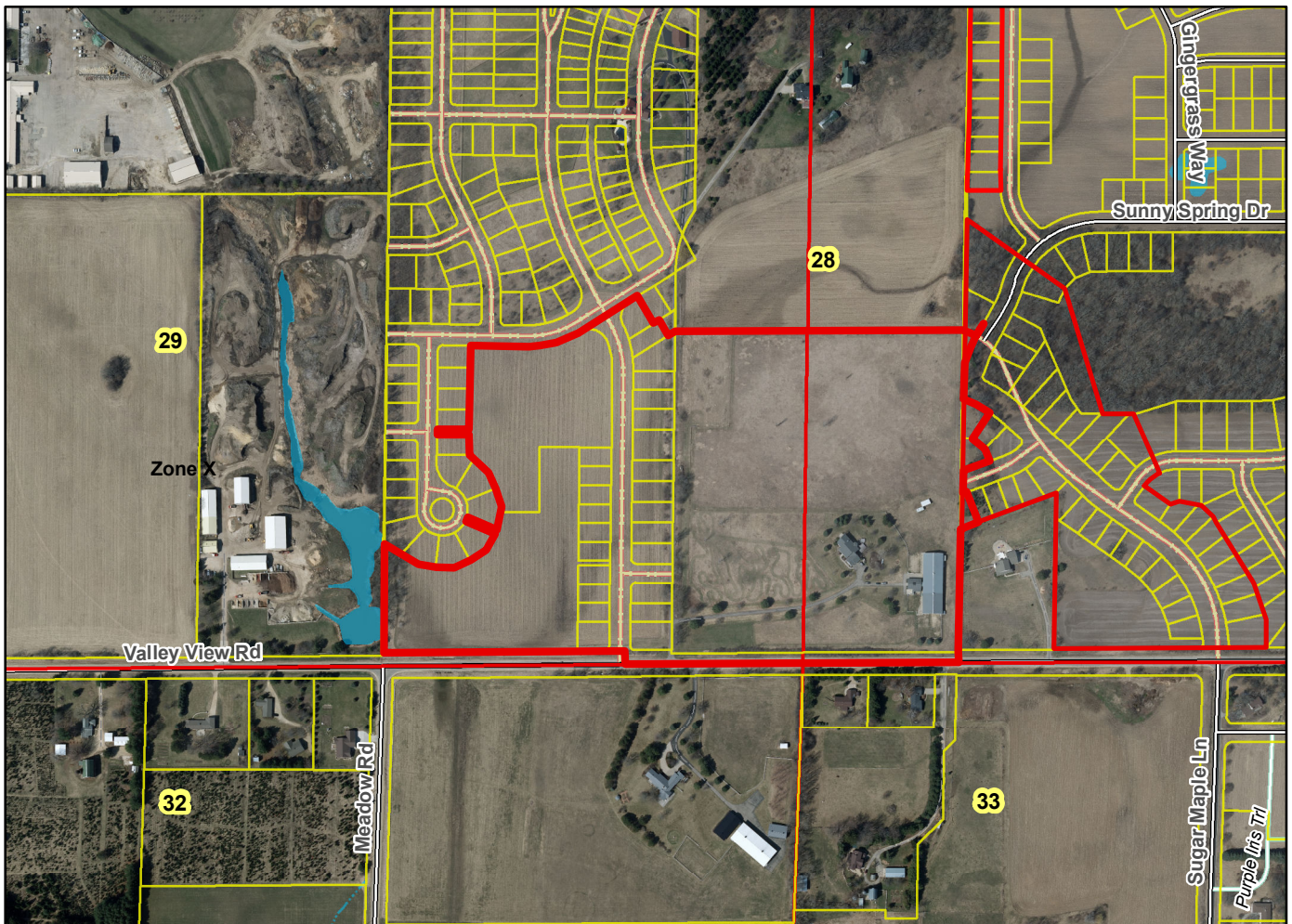
Airports - Dane County Regional

Drainage Channels - All lots are subject to public easements for drainage purposes and outlots 19 and 23 shown as dedicated to the public for stormwater management and drainage purposes.

Schools - established

Other Development -

Plats of subdivisions located in all other incorporated municipalities shall be submitted to the committee, as provided by section 236.12(2)(b) of the Wis. Stats., for the purpose of determining whether the committee has any objection to the plat. The basis for any objection to any such plat shall be that the plat conflicts with parks, parkways, expressways, major highways, airports, drainage channels, schools or other planned public developments.



Motion to certify with no objections: _____, Second: _____ Vote: _____