

VILLAGE AT AUTUMN LAKE REPLAT

LOTS 1-233, 241-519, OUTLOTS 1-15, OUTLOTS 18-39 AND VARIOUS PUBLIC RIGHT-OF-WAYS DISCONTINUED BY THE CITY OF MADISON RES-15
 DOC. NO. _____ WITHIN VILLAGE AT AUTUMN LAKE, LOCATED IN THE NE1/4, SW1/4, SE1/4 OF THE NW1/4, AND THE NE1/4, NW1/4, SW1/4 AND THE SE1/4 OF
 THE SW1/4, AND THE NW1/4 AND THE SW1/4 OF THE SE1/4 OF SECTION 26, T8N, R10E, CITY OF MADISON, DANE COUNTY, WISCONSIN

There are no objections to this plat with respect to
 Secs. 236.15, 236.16, 236.20 and 236.21(1) and (2),
 Wis. Stats. as provided by s. 236.12, Wis. Stats.

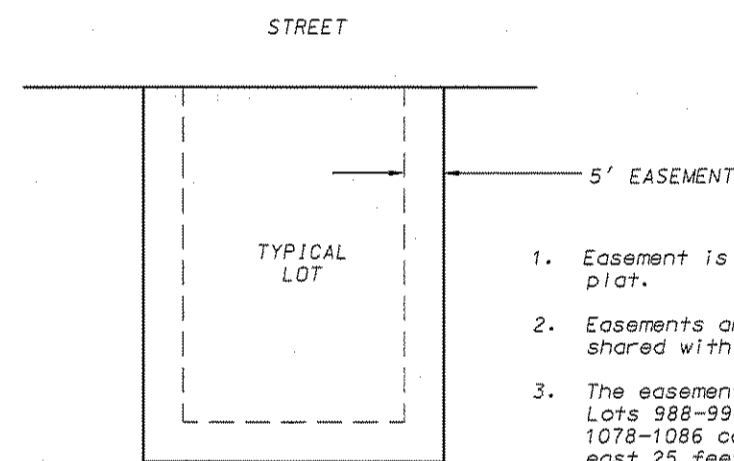
Certified _____, 20____

Department of Administration



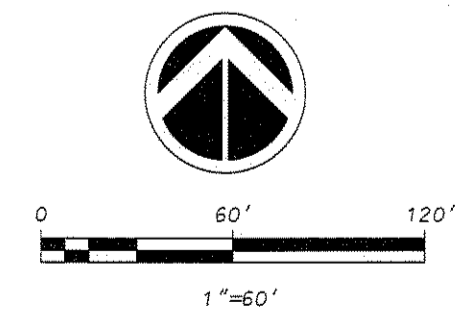
LEGEND

- Placed 1-1/4" x 18" solid round iron rebar stake, weighing 4.30 lbs/ft. All other lot and outlot corners are marked with 3/4" x 18" solid round iron rebar stakes, weighing 1.50 lbs/ft.
- Public utility easement (5' wide unless otherwise dimensioned). Utility easements as herein set forth are for the use of PUBLIC BODIES and PRIVATE PUBLIC UTILITIES having the right to serve the area.
- Recorded as information
- No Vehicular Access

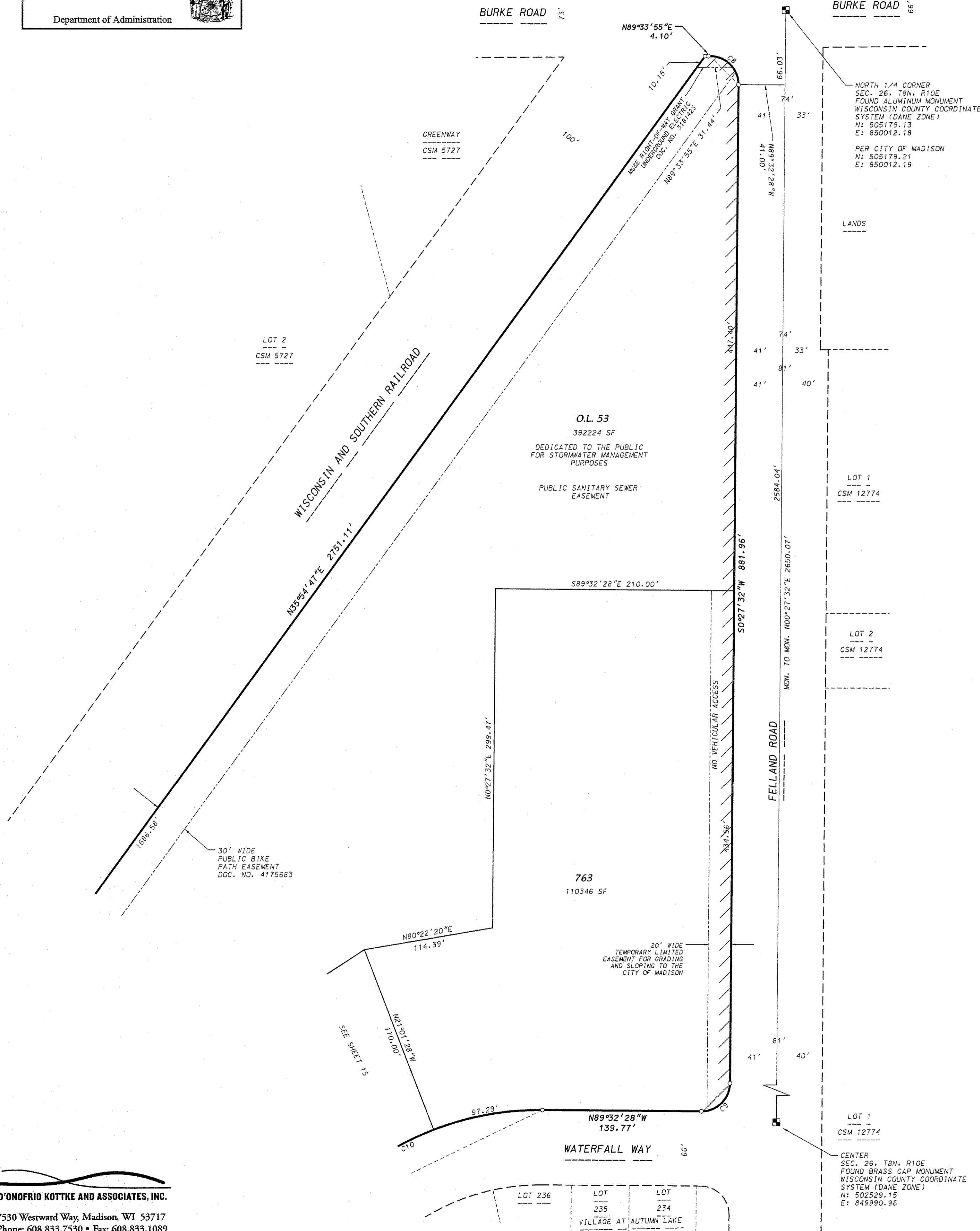


1. Easement is 12 feet on perimeter of the plat.
2. Easements are not required on lines that shared with streets or greenways.
3. The easement on the east property line of Lots 988-994, 997-999, 1007-1015 and 1078-1086 covers the west 5 feet of the east 25 feet of each lot. (see sheets 5, 9 and 13).

NON-EXCLUSIVE DRAINAGE EASEMENT DETAIL
 Not to Scale - See note 2 on sheet 19



GRID NORTH
 WISCONSIN COUNTY COORDINATE SYSTEM
 (DANE ZONE)
 WEST LINE OF THE NE1/4 OF SECTION 26,
 T8N, R10E BEARS N00°27'32"E



Received: 09/08/2015
 CPA
27413
 0101

D'ONOFRIO KOTTKE AND ASSOCIATES, INC.
 7530 Westward Way, Madison, WI 53717
 Phone: 608.833.7530 • Fax: 608.833.1089
 YOUR NATURAL RESOURCE FOR LAND DEVELOPMENT

FN:14-07-117