

Final Plat - Gordon A. Anderson Subdivision

City of Sun Prairie

Plat consists of 12 lots, 2.69 acres.

Parks - Lot 1 is currently a city park.

Parkways - none

Expressways - N/A

Major Highways - USH 151 to the south. Bird St. to the east.

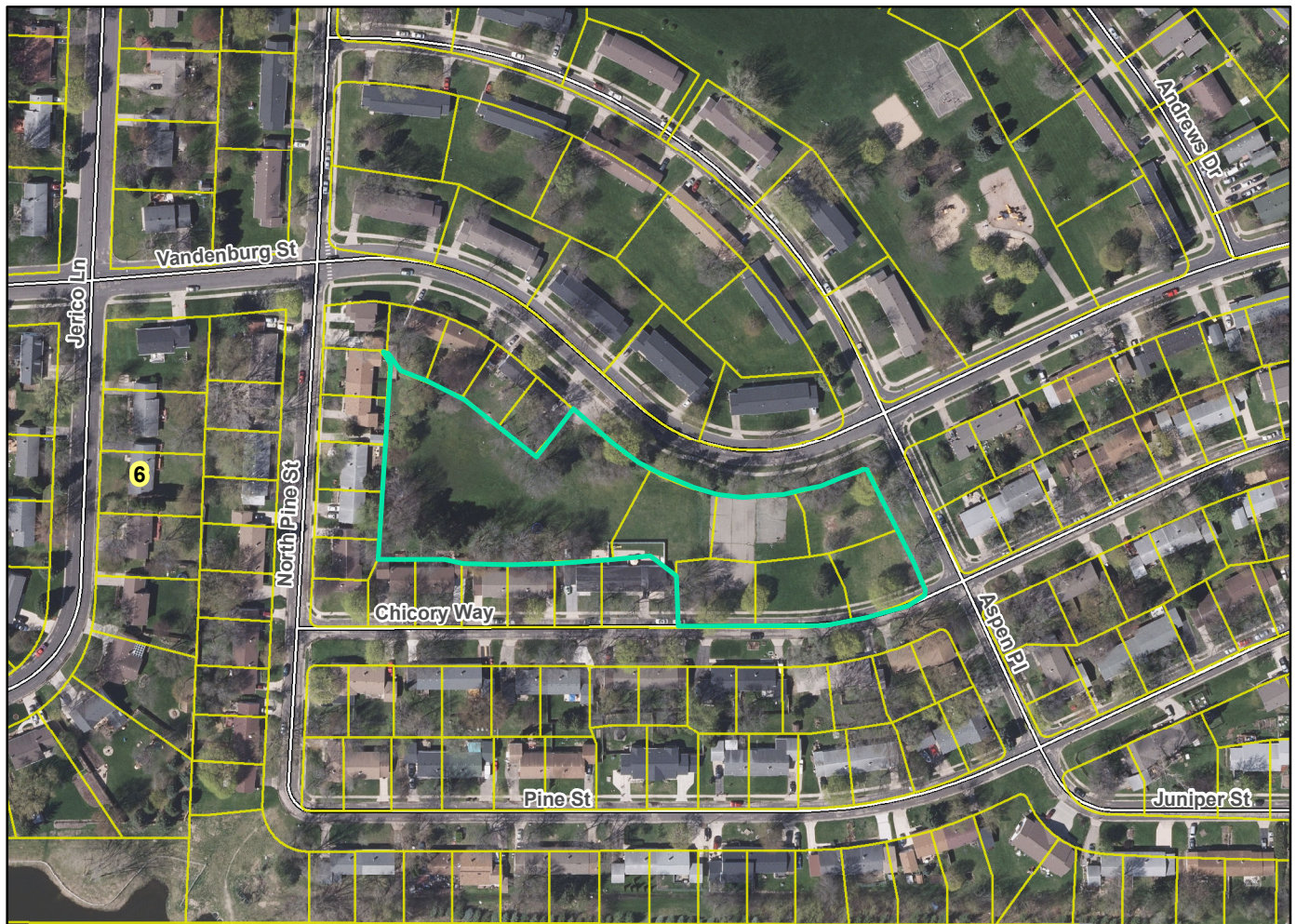
Airports - Dane County Regional

Drainage Channels - Drainage arrows shown indicating drainage flows.

Schools - established

Other Development - N/A

Plats of subdivisions located in all other incorporated municipalities shall be submitted to the committee, as provided by section 236.12(2)(b) of the Wis. Stats., for the purpose of determining whether the committee has any objection to the plat. The basis for any objection to any such plat shall be that the plat conflicts with parks, parkways, expressways, major highways, airports, drainage channels, schools or other planned public developments.



Motion to certify with no objections: _____, Second: _____ Vote: _____