



WISCONSIN DEPARTMENT
of HEALTH SERVICES

Demographic and Labor Market Overview of Older Adults in Dane County and Wisconsin

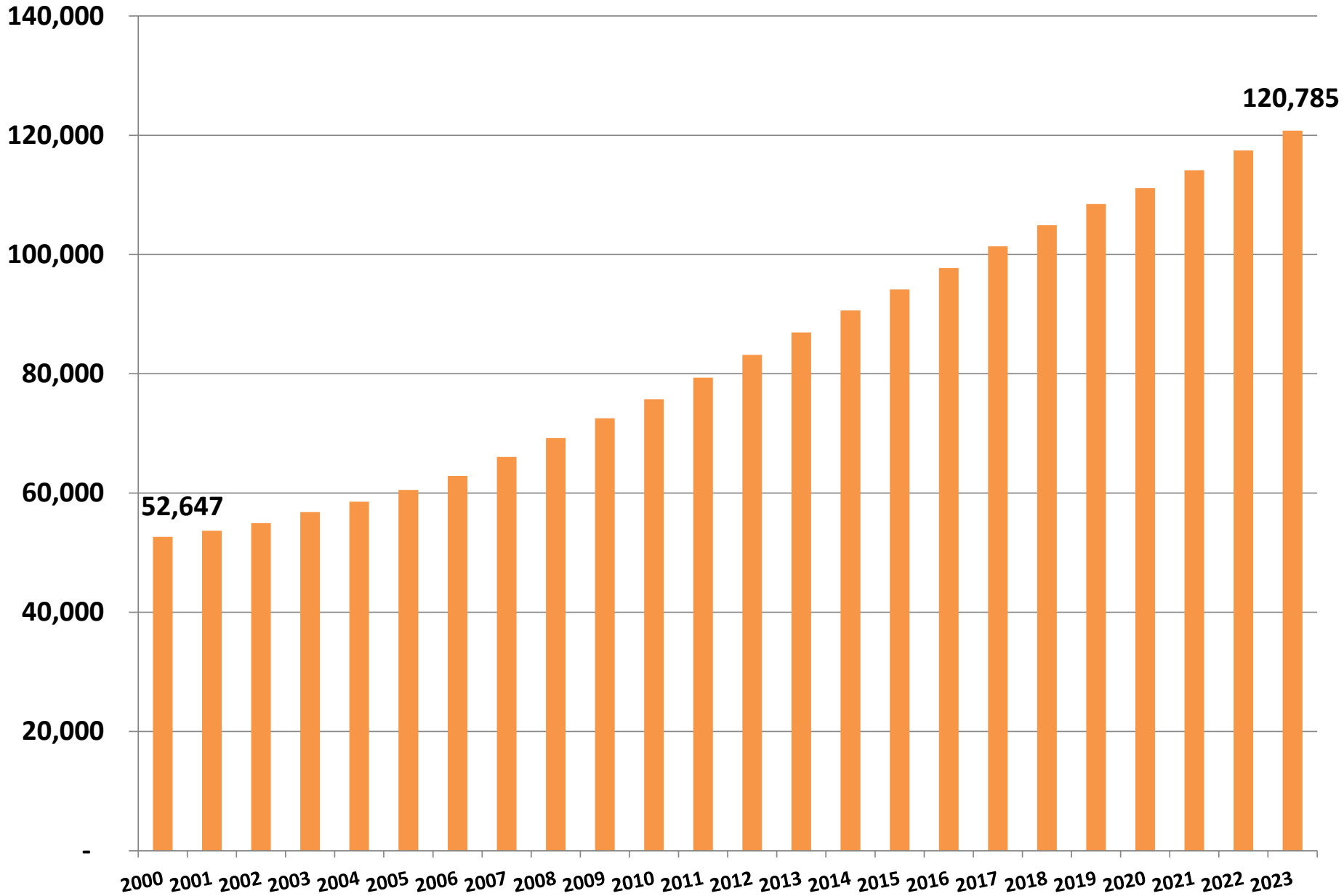
Prepared for
Dane County Aging and Disability Resources Center Board

Eric Grosso
Demographer
November 18, 2024

Demographic

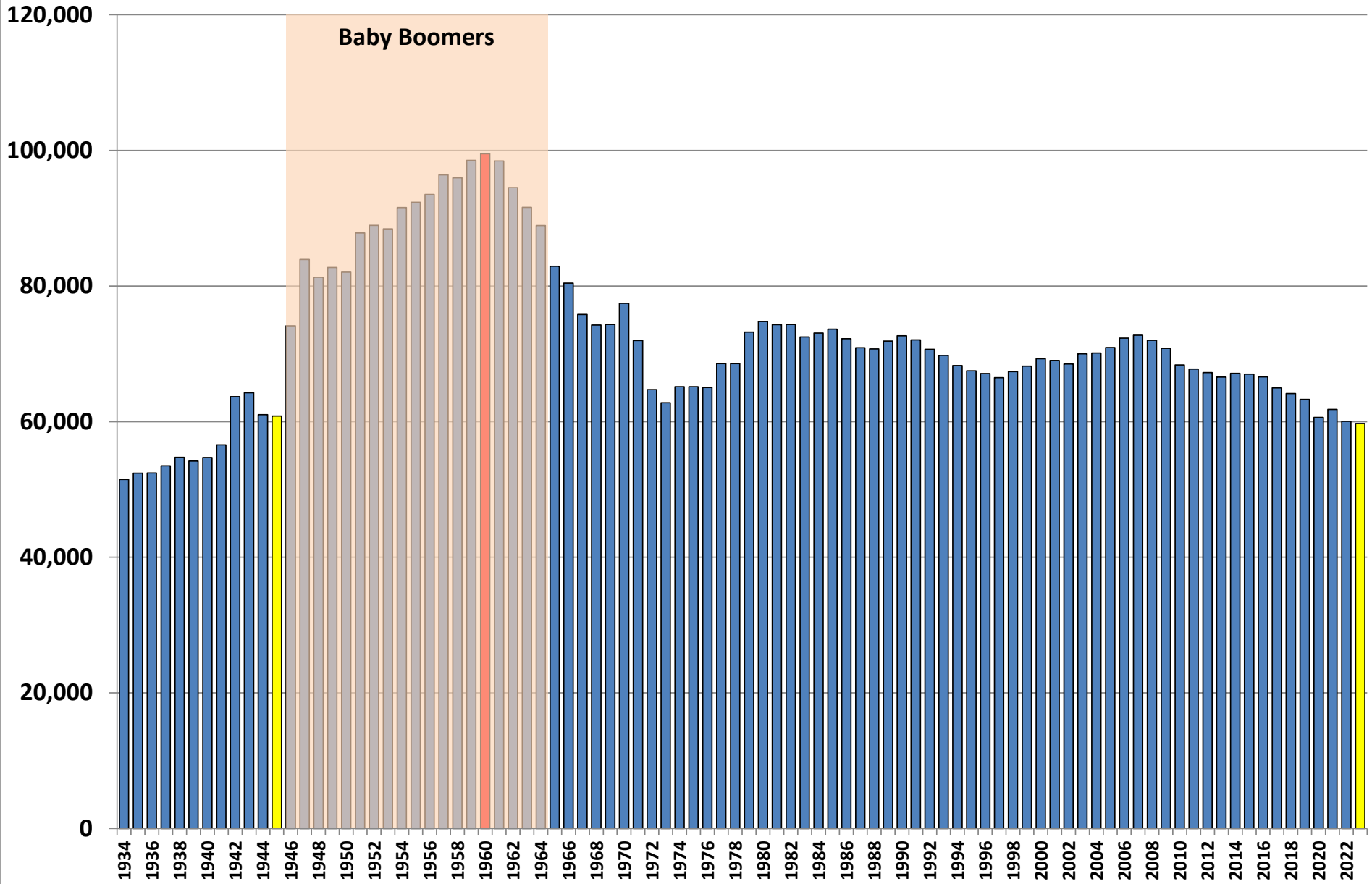
Number of Those Ages 60 and Older in Dane County, 2000-2023

Source: U.S. Census, Population Estimates Program, June 2024



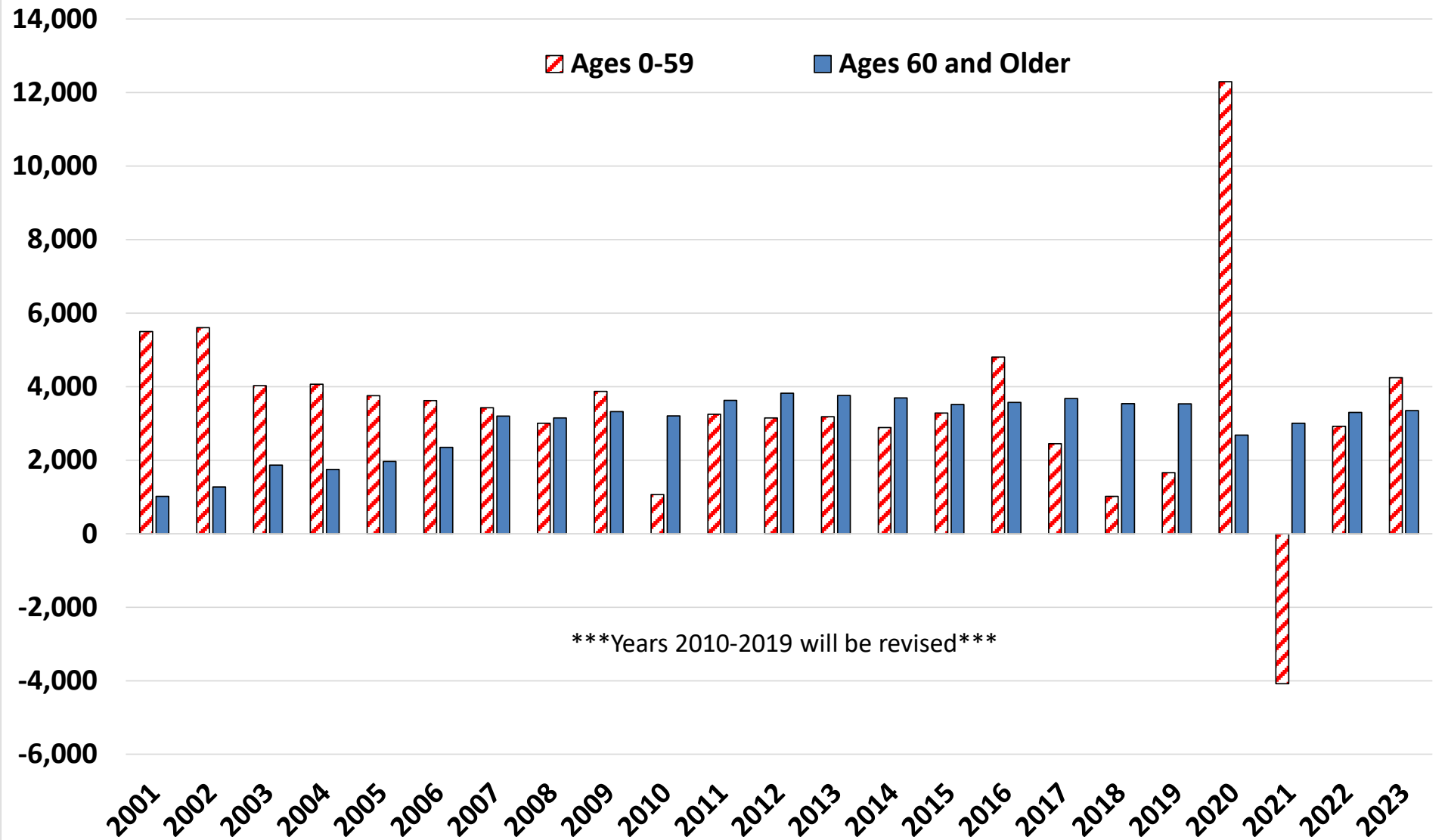
Annual Number of Live Births in Wisconsin, 1934-2023

Source: Wisconsin Department of Health Services, Vital Records Section (and its predecessor agencies)

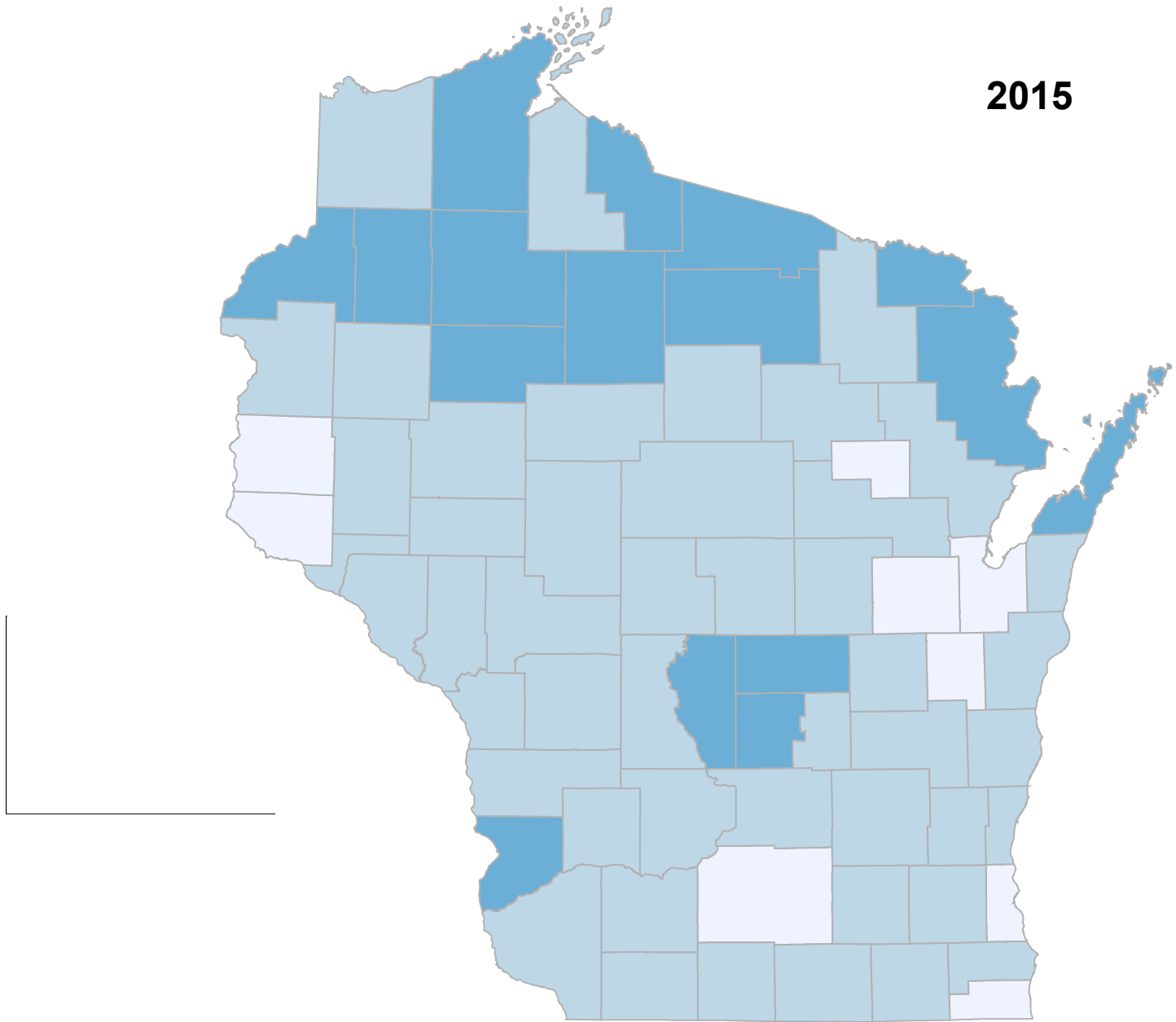


Dane County One-year Change in Population by Age Group, 2000-2023

U.S. Census, Population Estimates Program, June 2024

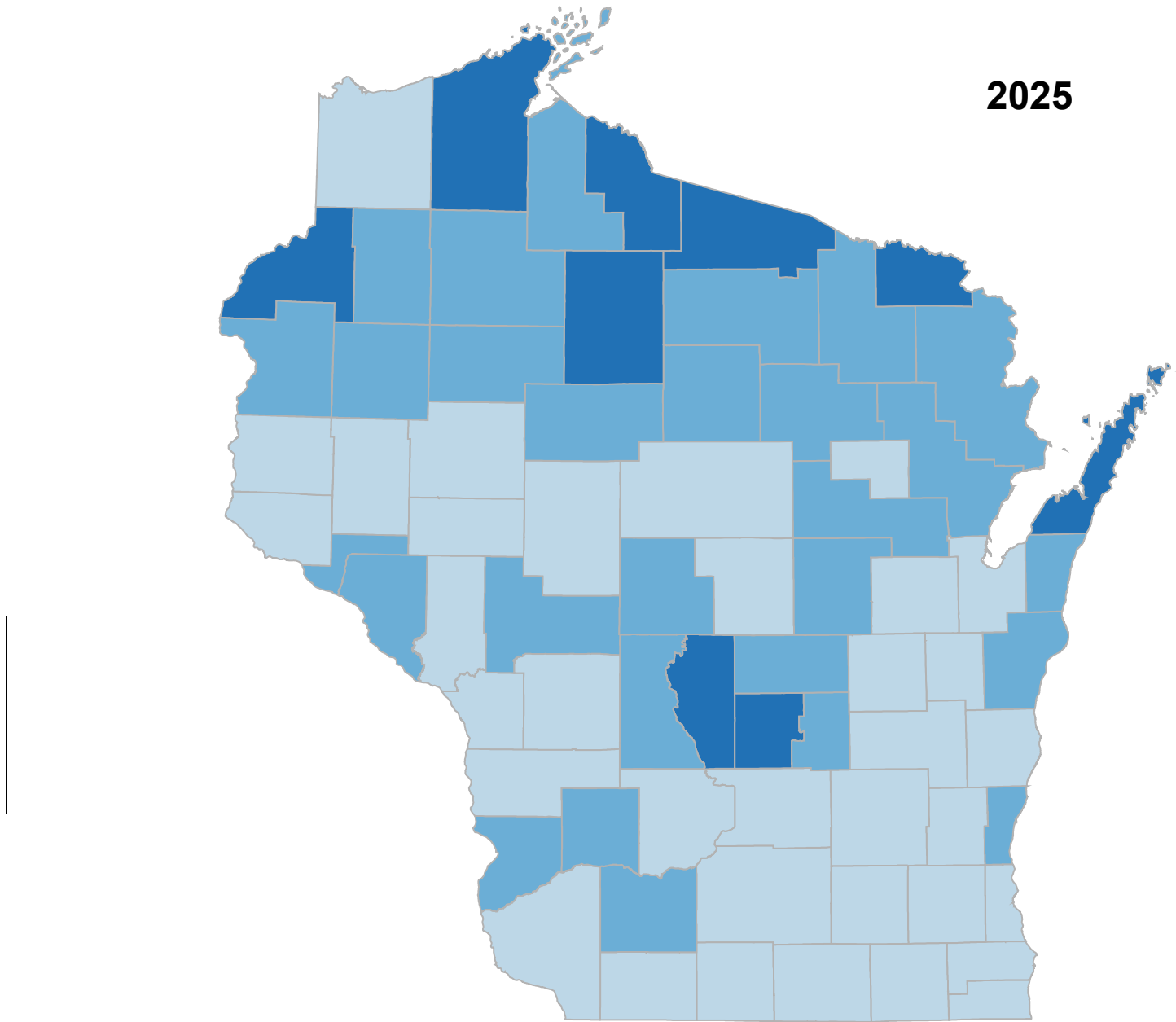


Percent of the Projected Population Ages 60 and Older, 2015–2040



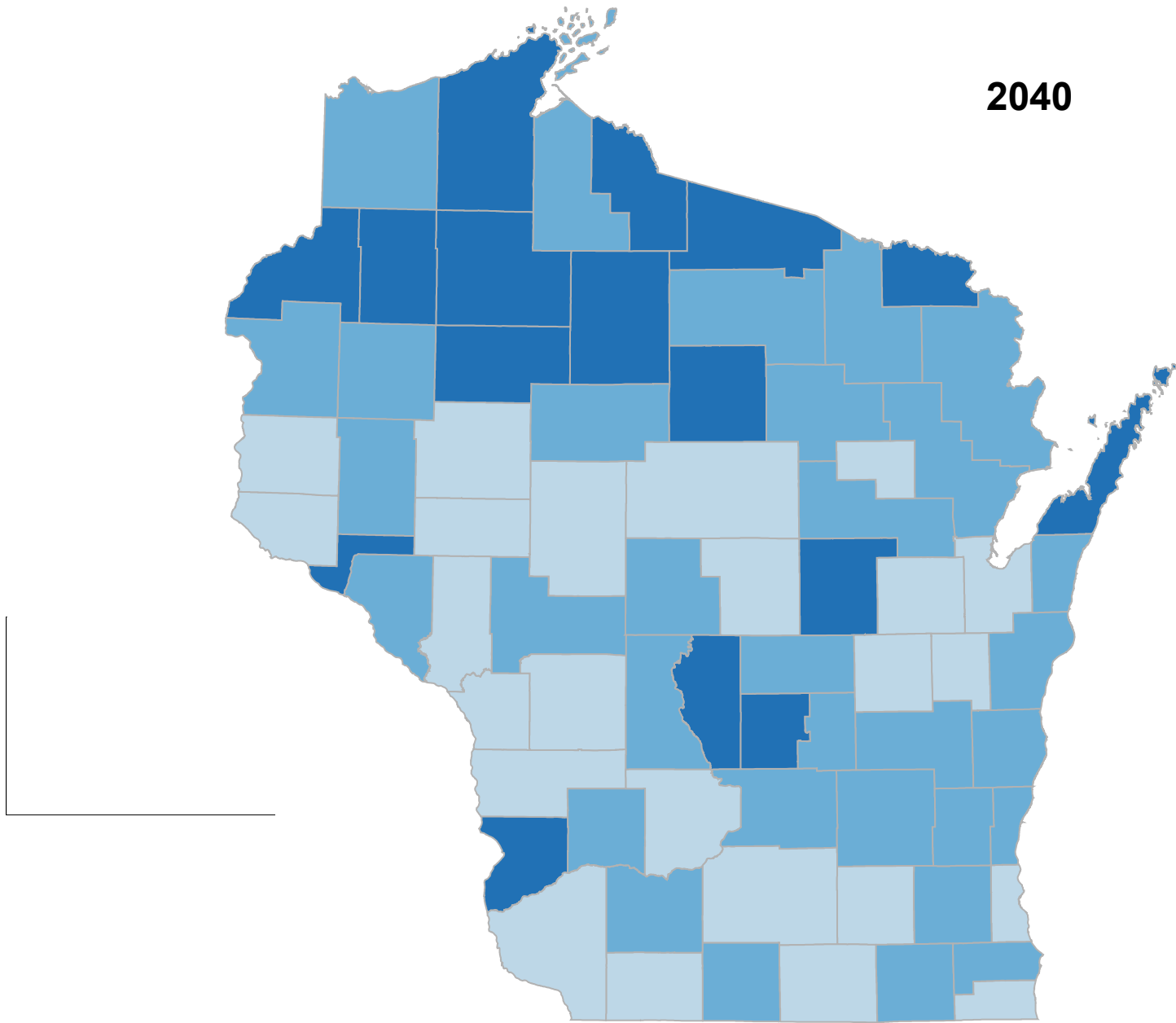
Source: Wisconsin Department of Administration, Demographic Services, 2010–2040 Population Projections, Vintage 2013

Percent of the Projected Population Ages 60 and Older, 2015–2040



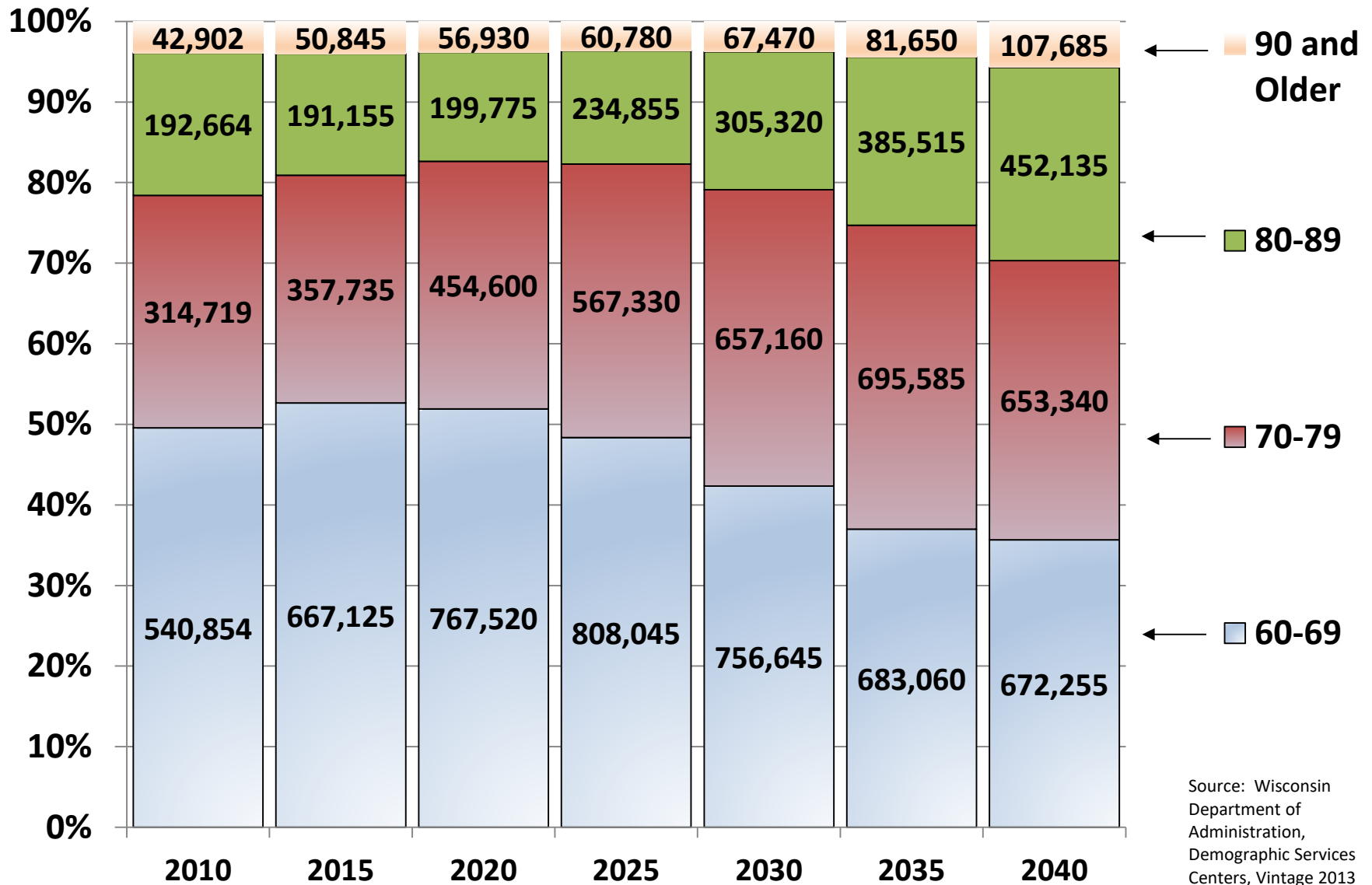
Source: Wisconsin Department of Administration, Demographic Services, 2010–2040 Population Projections, Vintage 2013

Percent of the Projected Population Ages 60 and Older, 2015–2040



Source: Wisconsin Department of Administration, Demographic Services, 2010–2040 Population Projections, Vintage 2013

Projected 10-Year Age Groups' Population Within Those Ages 60 and Older, Wisconsin, 2010-2040

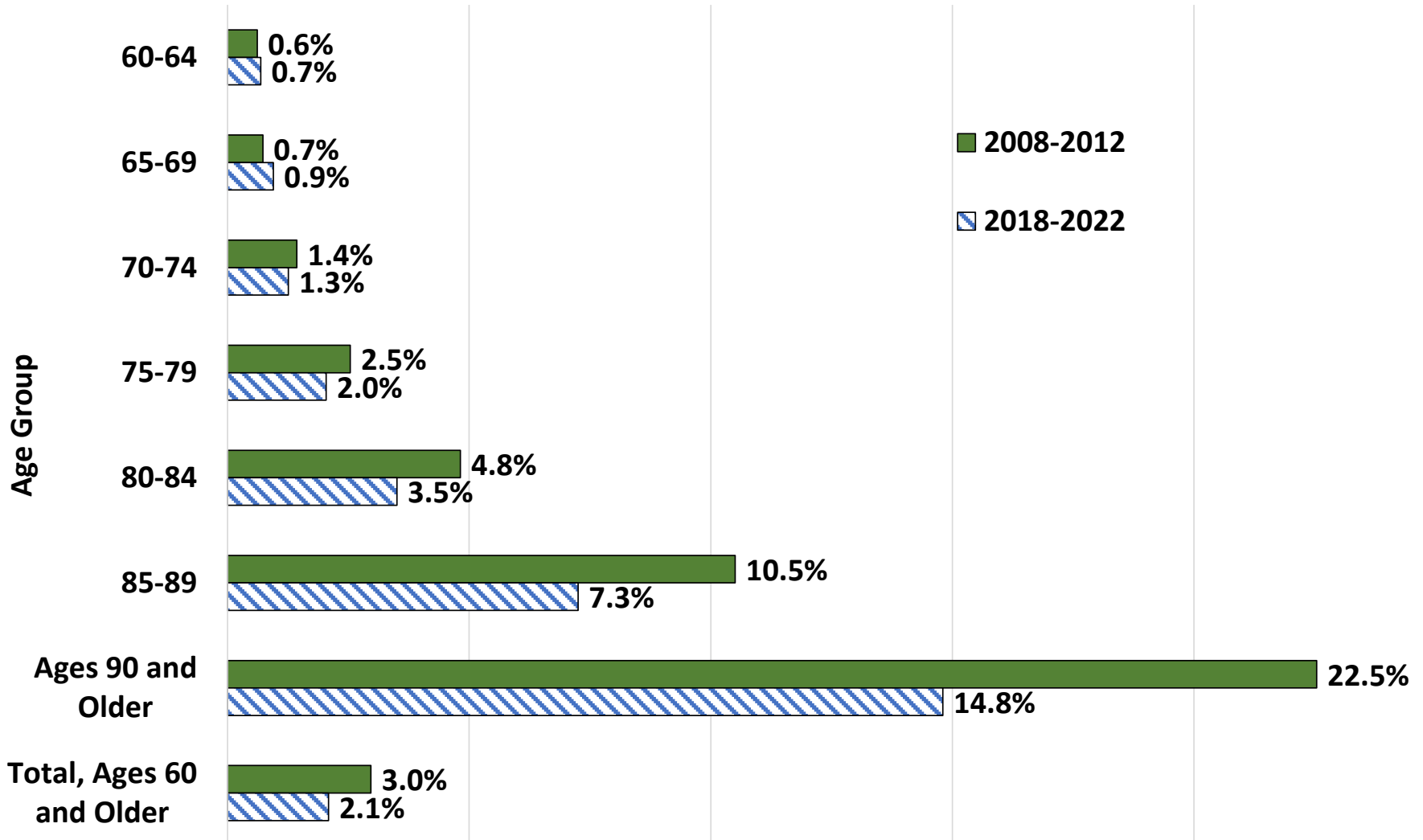


Share of Wisconsin Population Living in an Institutional Setting in Wisconsin by Age Group, 2008-2012 and 2018-2022

U.S. Census, American Community Survey, PUMS File Analysis

Axis Title

0% 5% 10% 15% 20% 25%



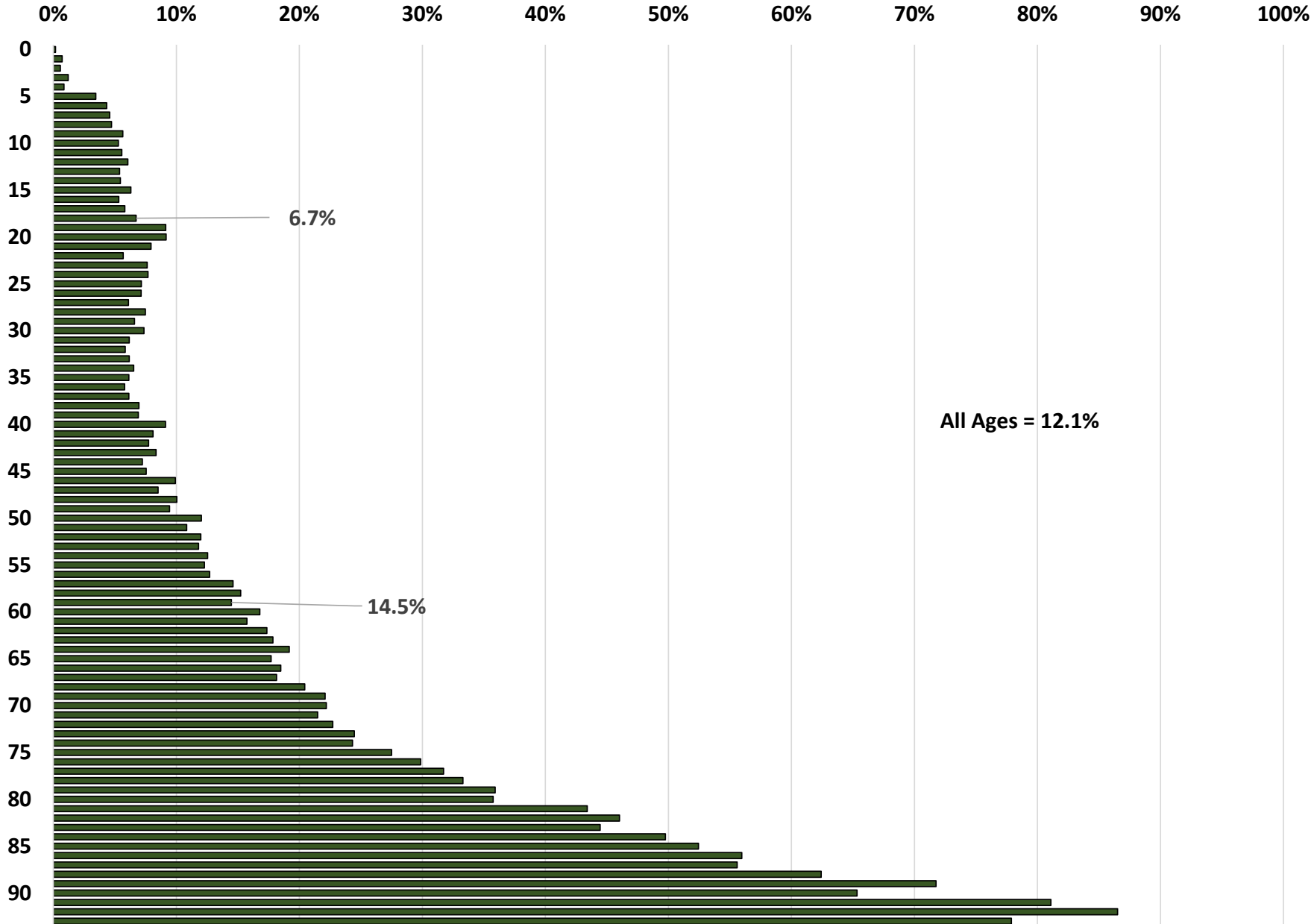
Wisconsin Institutional Population by Type, Sex, and Age Group in 2020

	Male	Female
Under 18 years:		
Institutionalized population :	633	220
Correctional facilities for adults	82	6
Juvenile facilities	511	175
Nursing facilities/Skilled-nursing	0	0
Other institutional facilities	40	39
18 to 64 years:		
Institutionalized population :	31,798	4,457
Correctional facilities for adults	29,194	2,721
Juvenile facilities	470	27
Nursing facilities/Skilled-nursing	1,761	1,522
Other institutional facilities	373	187
65 years and over:		
Institutionalized population :	10,112	18,320
Correctional facilities for adults	820	30
Juvenile facilities	0	0
Nursing facilities/Skilled-nursing	9,166	18,168
Other institutional facilities	126	122

U.S. Census Bureau. "GROUP QUARTERS POPULATION BY SEX BY AGE BY MAJOR GROUP QUARTERS TYPE Decennial Census, DEC 118th Congressional District Summary File, Table P18, 2020.

Wisconsin Disability Rate by Single Year of Age

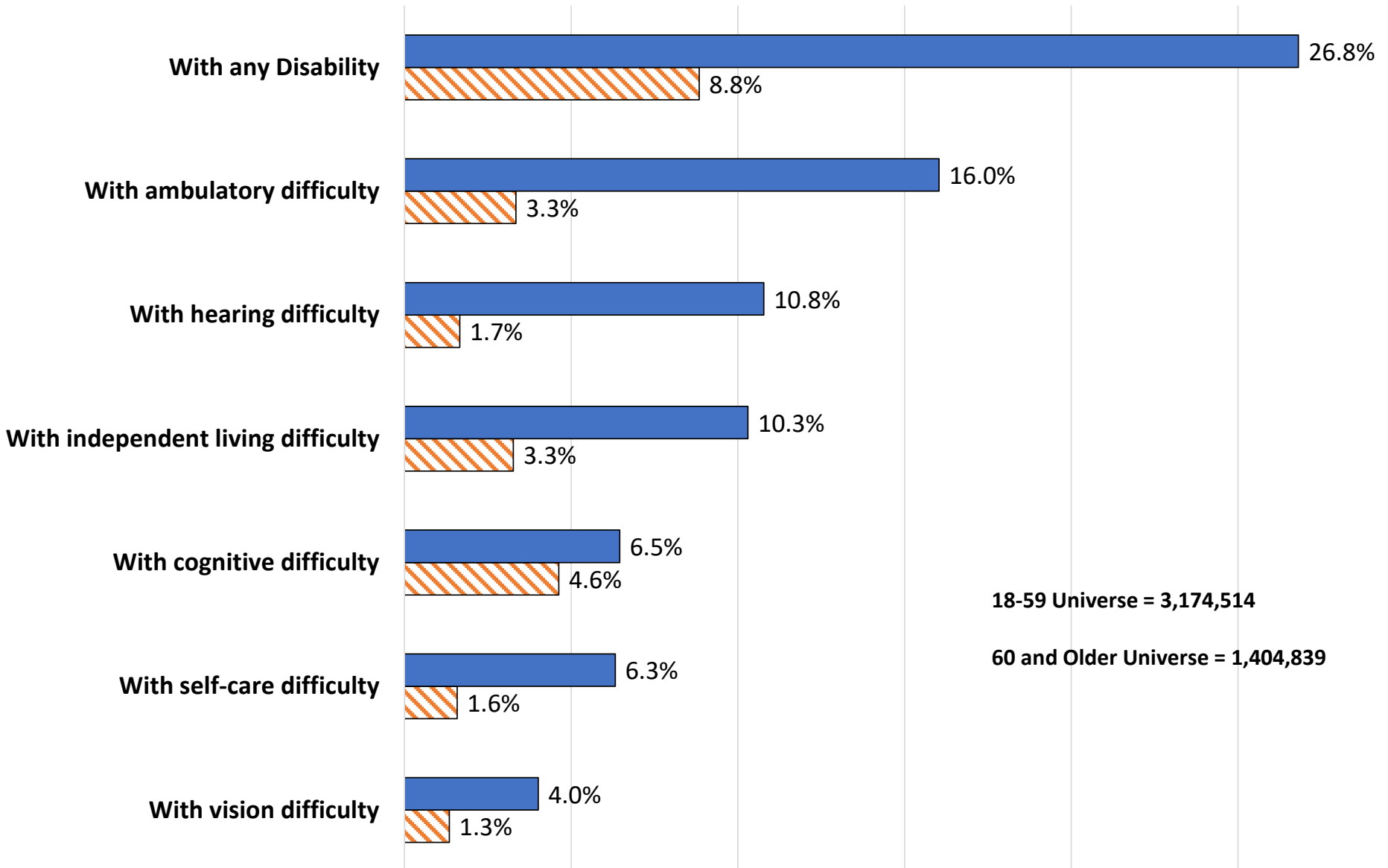
U.S. Census, 2017-2021 American Community Survey, PUMS File Analysis



Disability Rate by Type of Disability by Select Age Group in Wisconsin

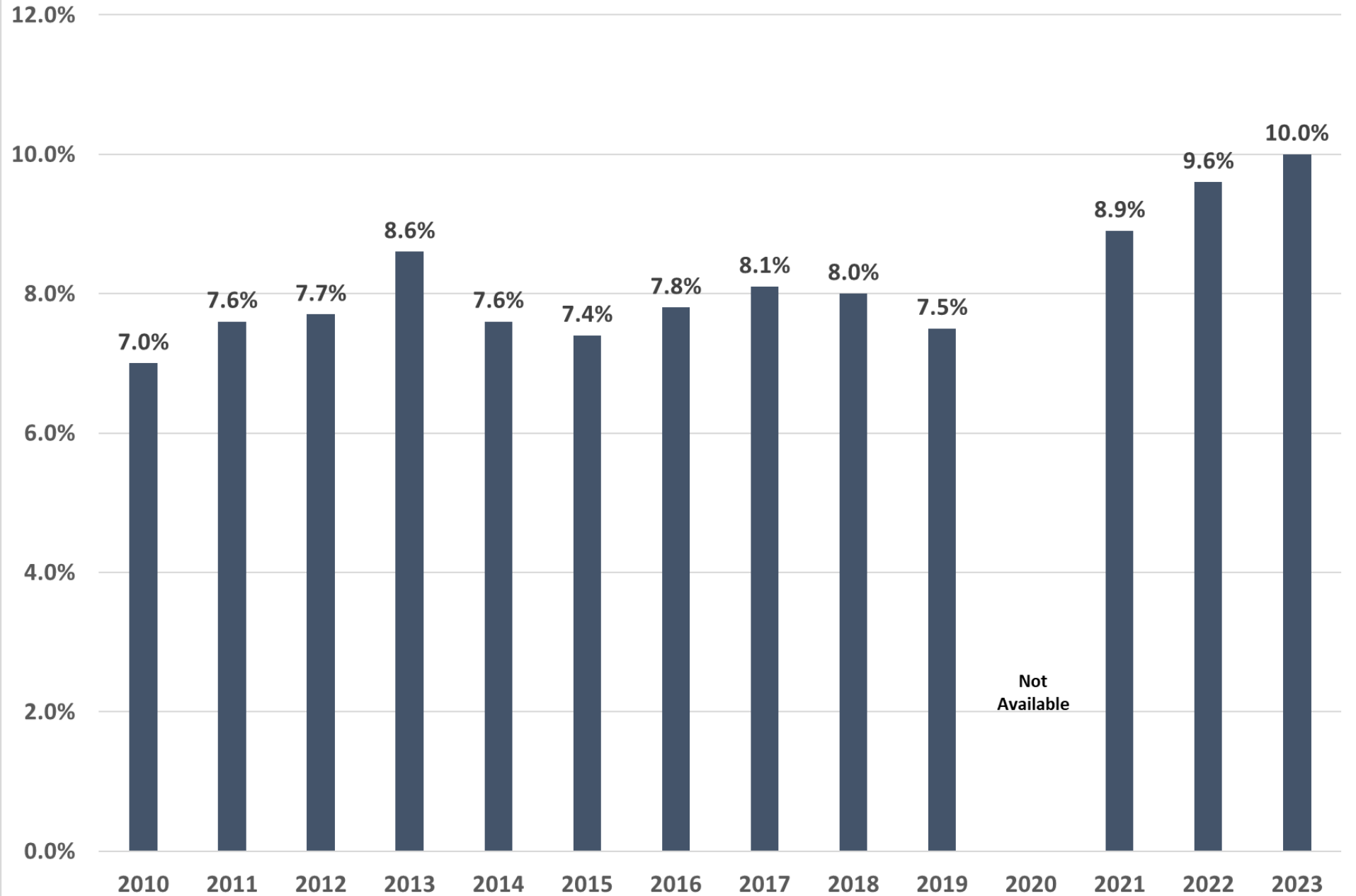
U.S. Census, 2017-2021 American Community Survey, PUMS File Analysis

■ Ages 60 and Older ■ Ages 18-59



Poverty Rate Among Those Ages 60 and Older, Wisconsin, 2010-2023

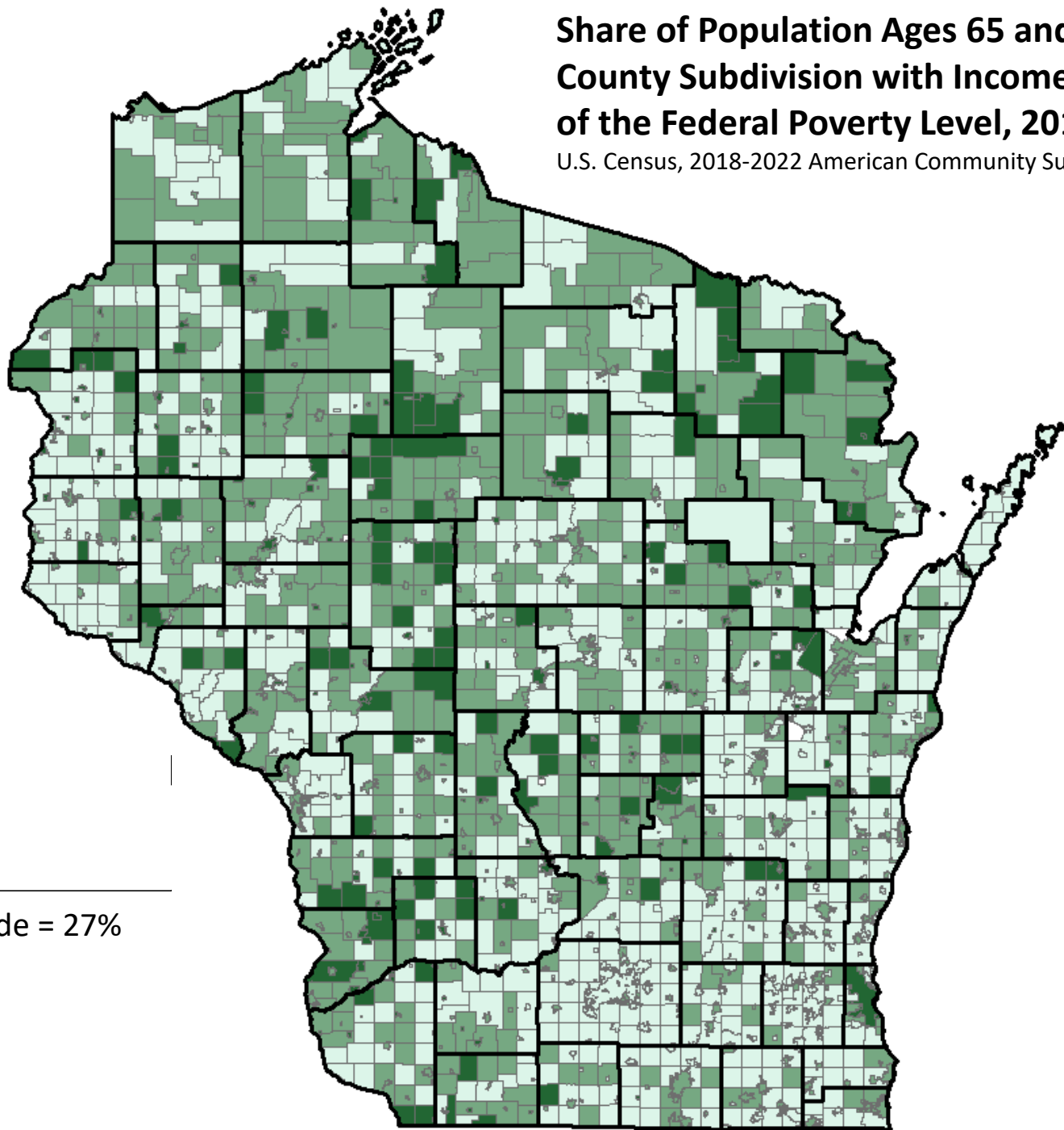
U.S. Census, American Community Survey, Table S0102



Share of Population Ages 65 and Older by County Subdivision with Income Below 200% of the Federal Poverty Level, 2018-2022

U.S. Census, 2018-2022 American Community Survey, Table B17024

Statewide = 27%

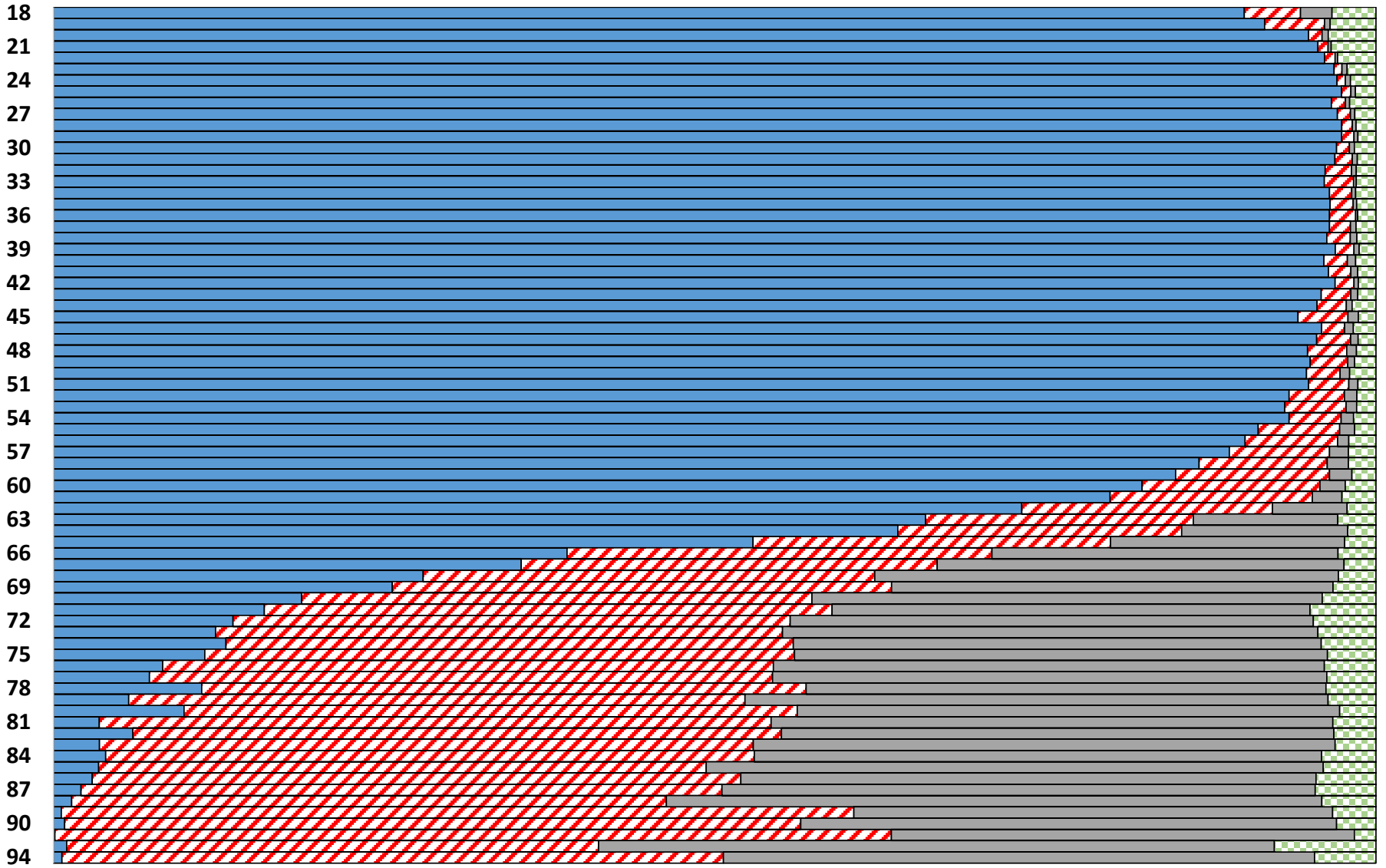


Employment

Aggregate Personal Income by Age by Source, 2017-2021, Wisconsin

U.S. Census, American Community Survey, PUMS File Analysis

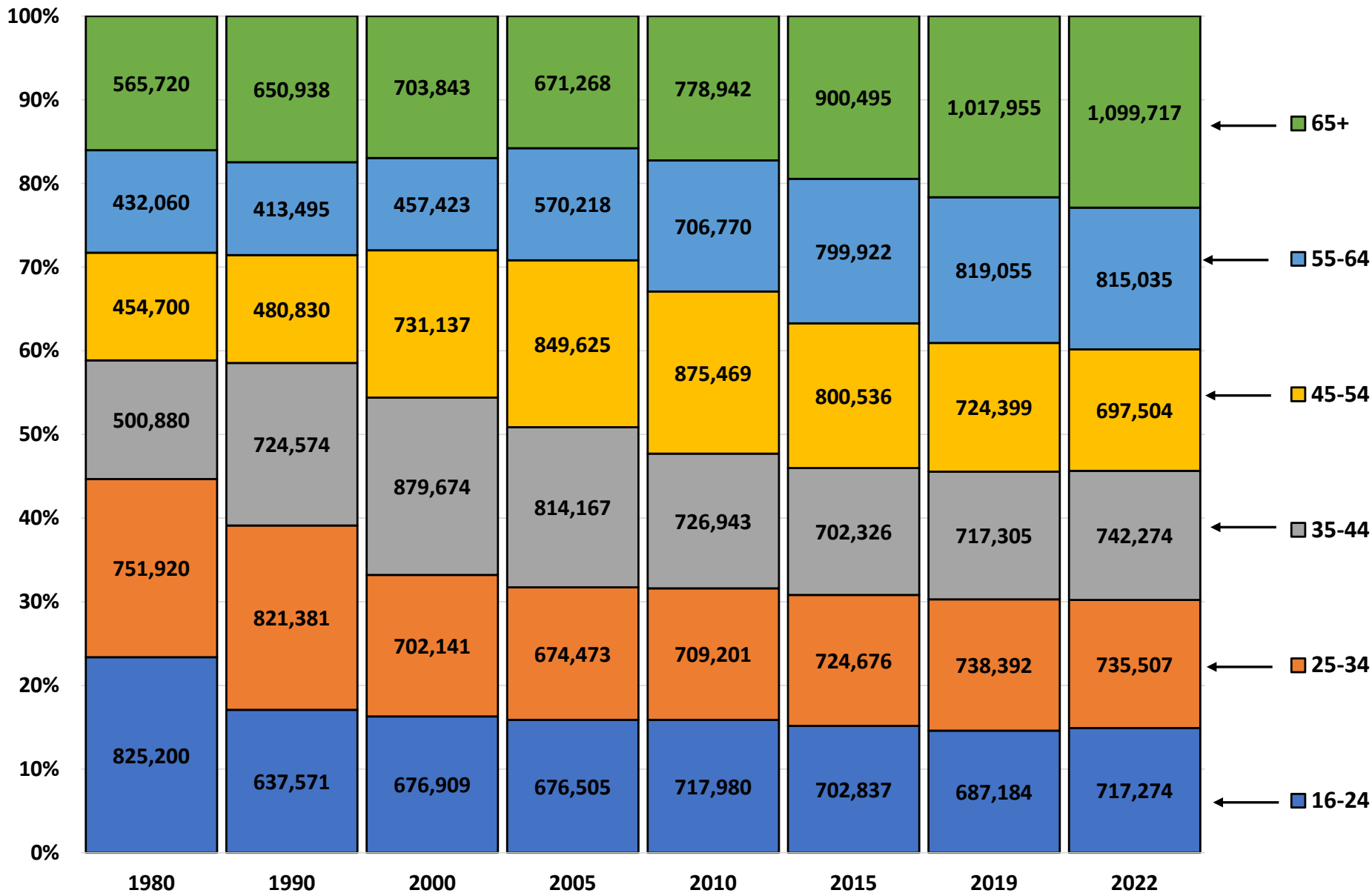
0% 10% 20% 30% 40% 50% 60% 70% 80% 90% 100%



■ Employment Income ■ Dividends, Interest, and Retirement Income ■ Social Security Income ■ Other Income

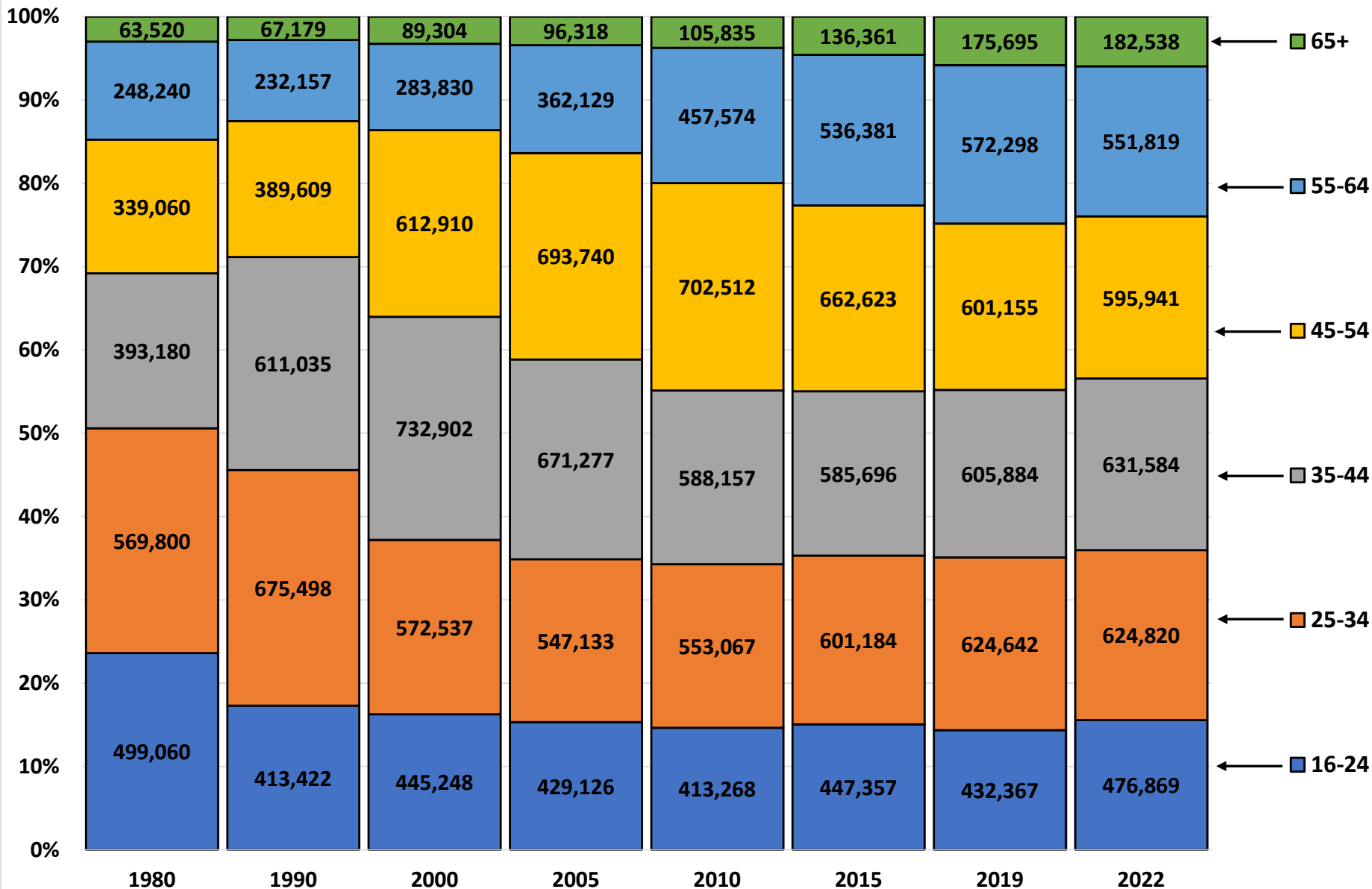
Wisconsin's Population Ages 16 and Older by Age Group, 1980-2022

Steven Ruggles, Sarah Flood, Matthew Sobek, Daniel Backman, Annie Chen, Grace Cooper, Stephanie Richards, Renae Rogers, and Megan Schouweiler. IPUMS USA: Version 15.0 [dataset]. Minneapolis,



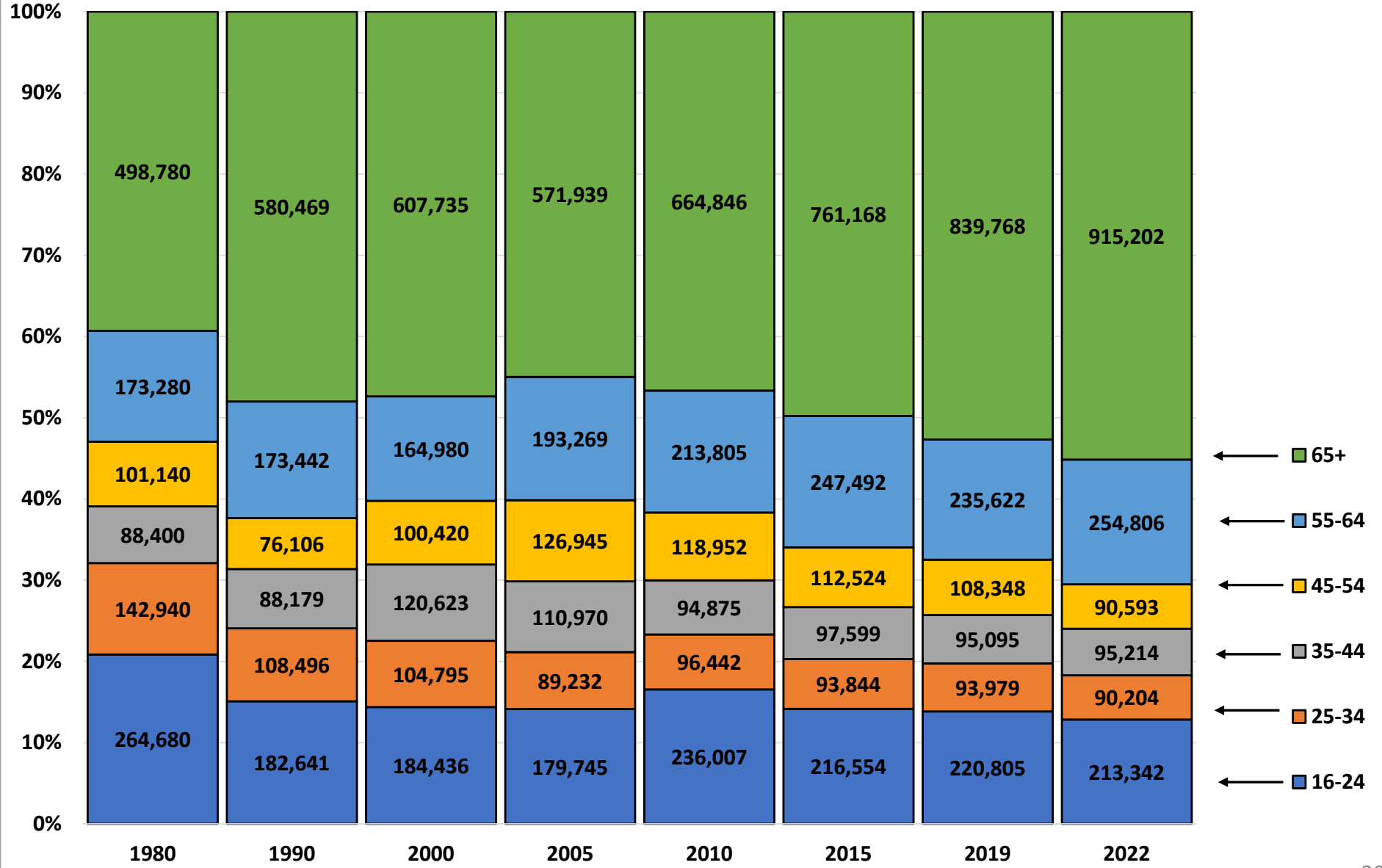
Wisconsin's Employed by Age Group, 1980-2022

Steven Ruggles, Sarah Flood, Matthew Sobek, Daniel Backman, Annie Chen, Grace Cooper, Stephanie Richards, Renae Rogers, and Megan Schouweiler. IPUMS USA: Version 15.0 [dataset]. Minneapolis, MN: IPUMS, 2024. [http](http://www.ipums.org)



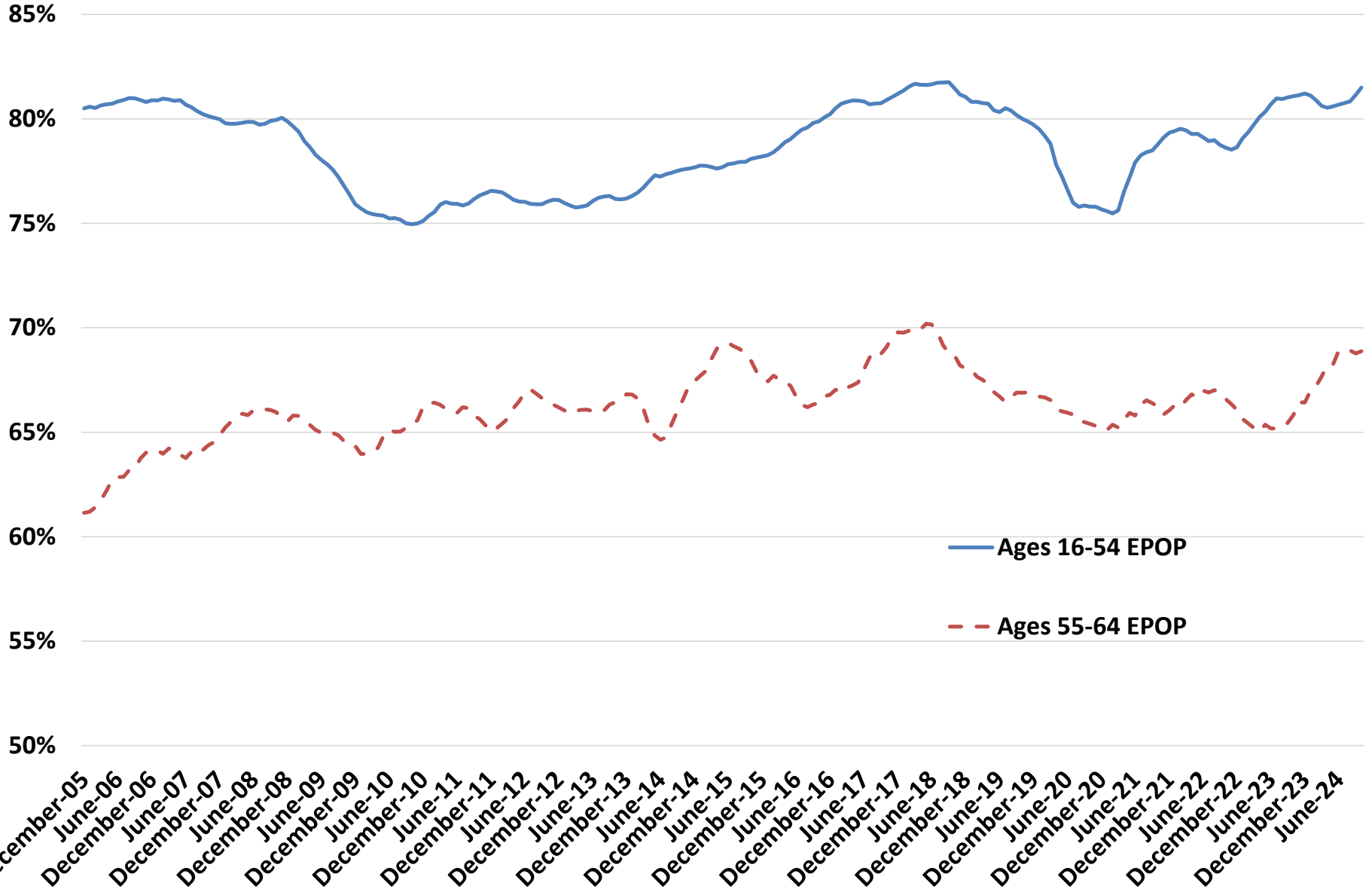
Wisconsin's Not in Labor Force by Age Group, 1980-2022

Steven Ruggles, Sarah Flood, Matthew Sobek, Daniel Backman, Annie Chen, Grace Cooper, Stephanie Richards, Renae Rogers, and Megan Schouweiler. IPUMS USA: Version 15.0 [dataset]. Minneapolis, MN: IPUMS,



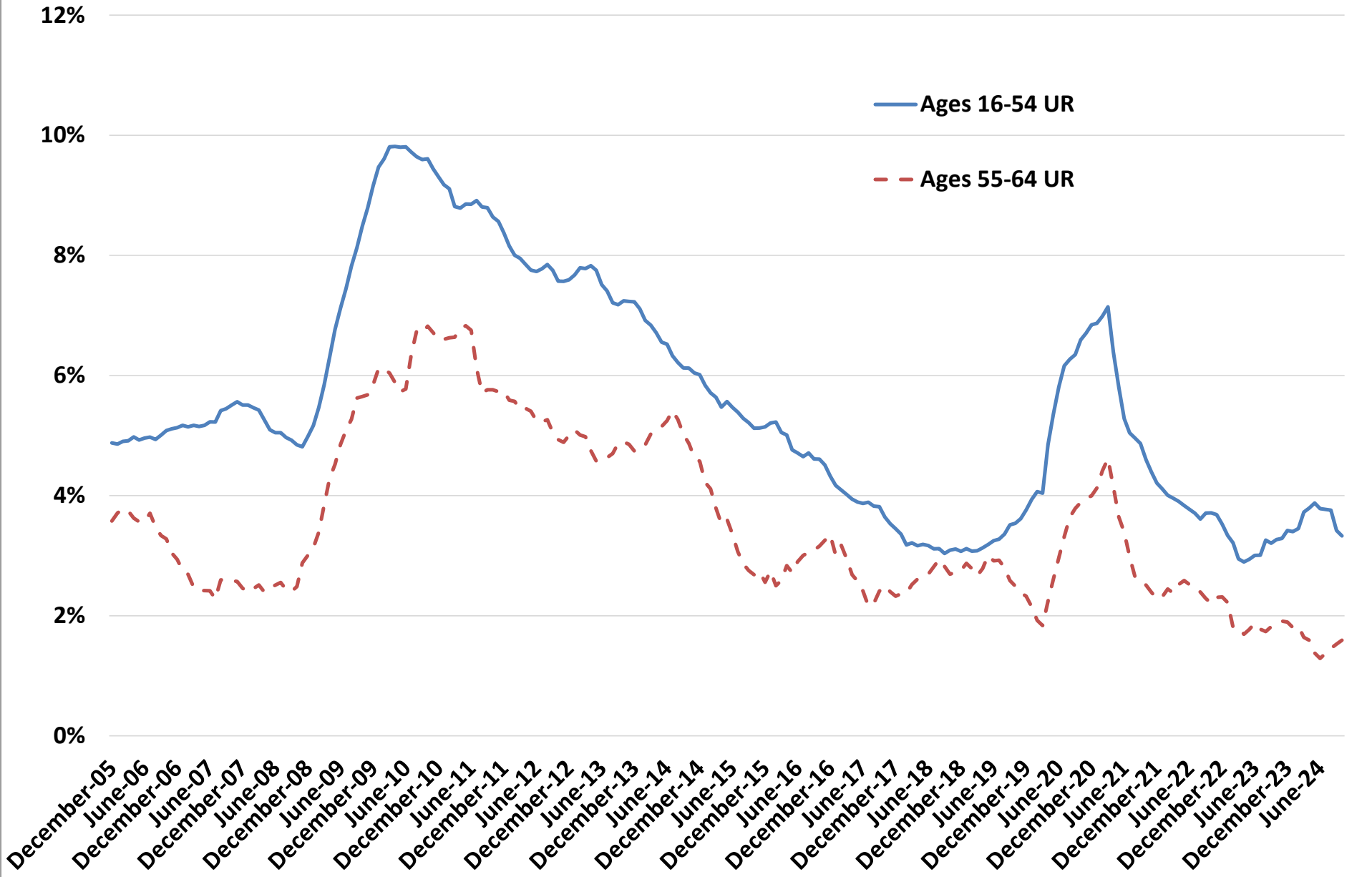
Twelve-Month Moving Average Employed-to-Population (EPOP) Ratio by Age Group, Wisconsin, December 2005-Current

U.S. Bureau of Labor Statistics, Current Population Survey, DEMECON File



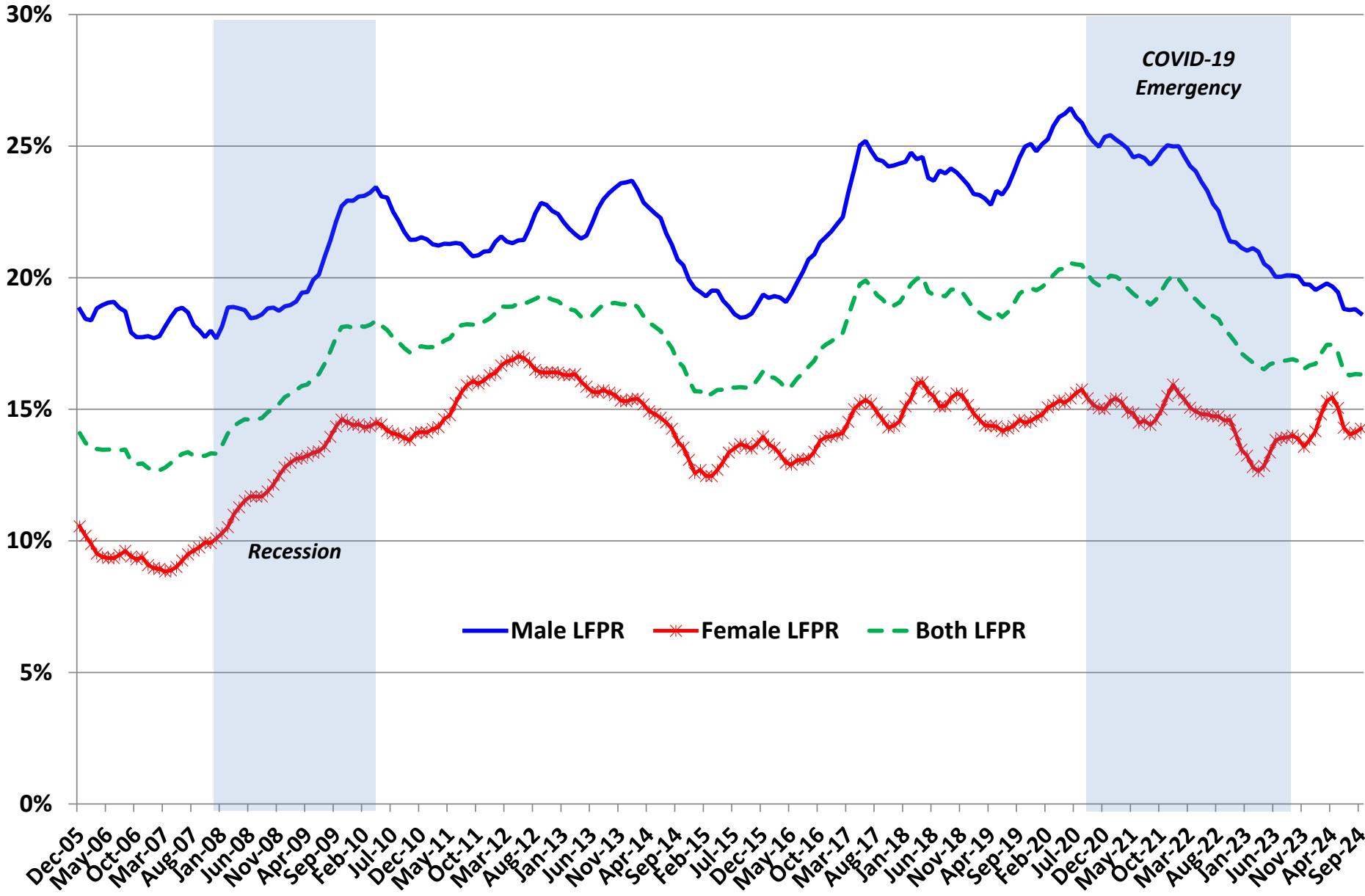
Twelve-Month Moving Average Unemployment Rate (UR) by Age Group, Wisconsin, December 2005-Current

U.S. Bureau of Labor Statistics, Current Population Survey, DEMECON File



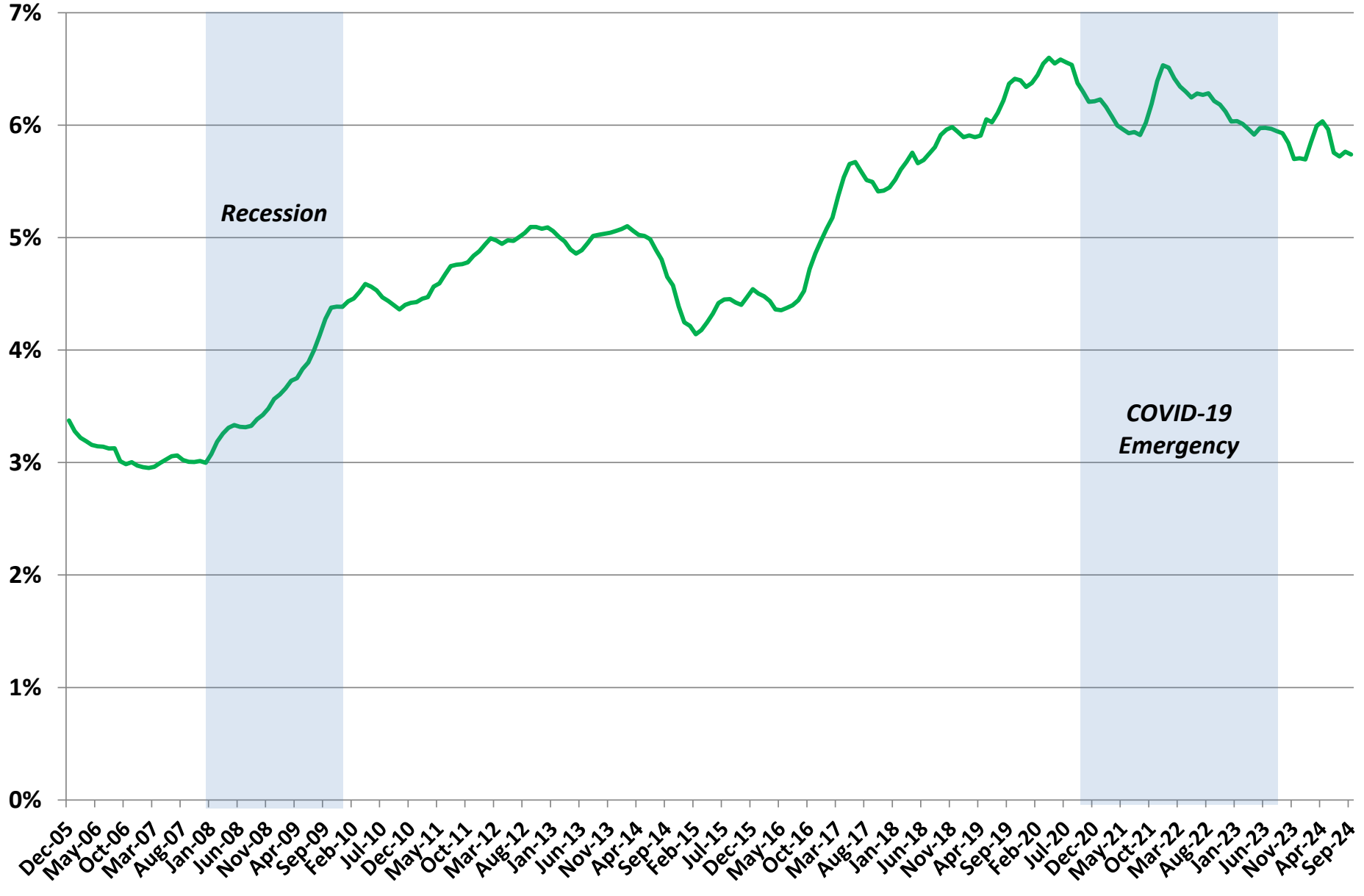
Wisconsin, 12-Month Moving Average Monthly Labor Force Participation Rate (LFPR) by Sex, Ages 65 and Older, December 2005–Current

Source: U.S. Bureau of Labor Statistics, Current Population Survey (CPS), Demecon File



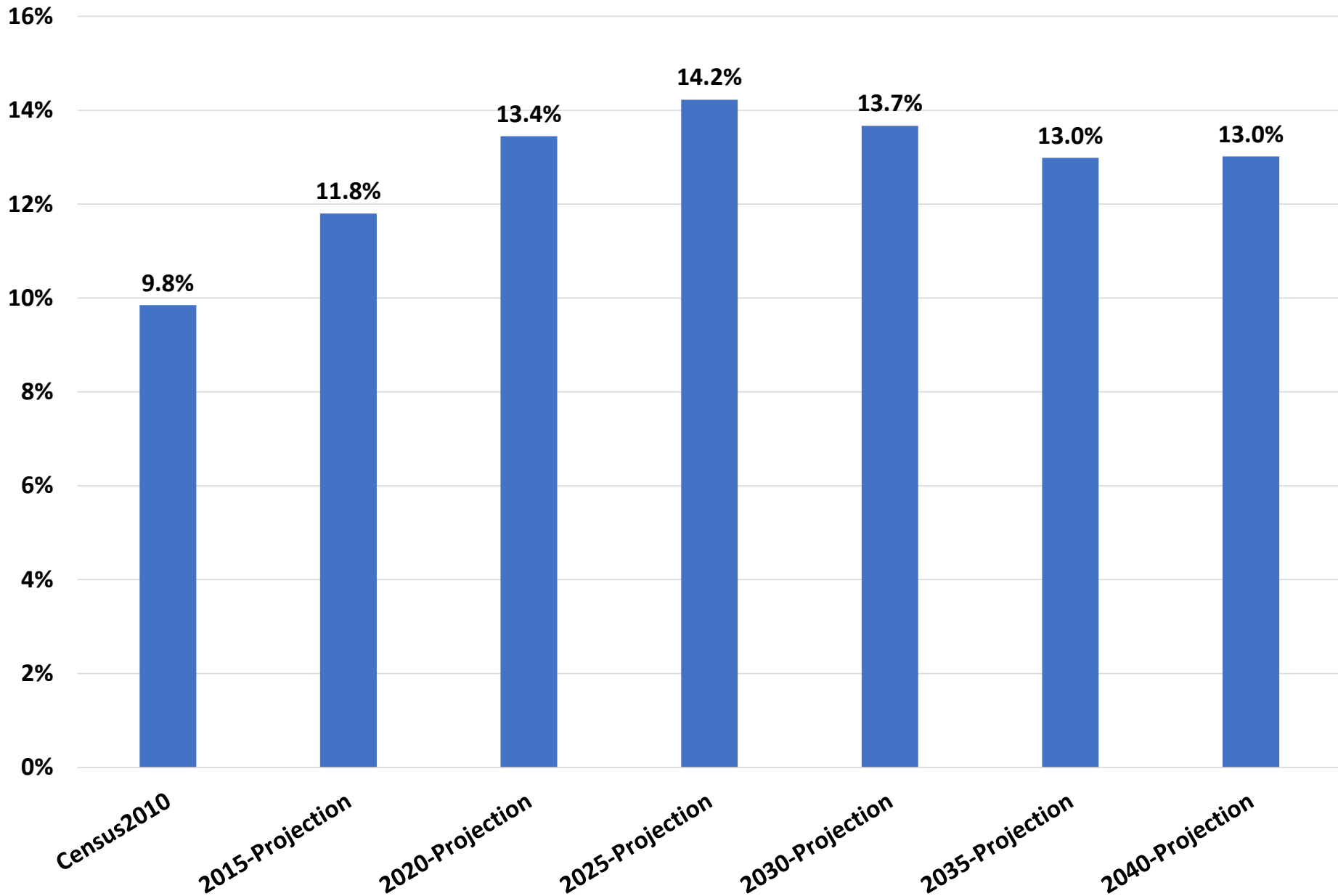
Ages 65 and Older Share of Wisconsin Total Labor Force, 12-Month Moving Average, December 2005–Current

Source: U.S. Bureau of Labor Statistics, Current Population Survey (CPS), Demecon File



Ages 60 and Older, Projected Share of Labor Force, Wisconsin

U.S. Census, American Community Survey, Table B23001, 2008-2012, 2013-2017, and 2018-2022; Wisconsin Department of Administration, Demographic Services Center, Vintage 2013



Long-Term Occupational Projections, Wisconsin, 2020-2030

	<u>Total, All Occupations</u>	<u>Home Health and Personal Care Aides</u>	<u>Nursing Assistants</u>	<u>Medical Assistants</u>
Employment 2020	3,040,197	77,811	30,647	13,383
Projected Employment 2030	3,231,419	92,315	30,018	15,024
Numeric Change	191,222	14,504	-629	1,641
Percent Change	6.3%	18.6%	-2.1%	12.3%
Annual Exits	134,154	5,446	1,942	583
Annual Transfers	207,559	4,816	1,717	1,061
Annual Growth	19,122	1,450	-63	164
Annual Total Openings	360,835	11,712	3,596	1,808
Typical education needed for entry	--	High school diploma or equivalent	Postsecondary non-degree award	Postsecondary non-degree award
Related-occupation work experience	--	None	None	None
Post-hire training needed for competency	--	Short-term on-the-job training	None	None
Annual 10th Percentile Wage	\$21,690	\$20,760	\$26,020	\$30,640
Annual 25th Percentile Wage	\$28,990	\$22,630	\$28,370	\$34,420
Annual Median Wage	\$41,150	\$25,630	\$31,980	\$38,270
Annual 75th Percentile Wage	\$62,330	\$29,490	\$36,850	\$43,300
Annual 90th Percentile Wage	\$89,740	\$32,020	\$40,150	\$49,950

Source: Office of Economic Advisors, Wisconsin Department of Workforce Development, July 2022

Sex					
	Healthcare Support Workforce	Total Ages 16 and Older		Healthcare Support Workforce	Total Ages 16 and Older
Male	13,499	2,375,871	Male	13%	50%
Female	89,355	2,387,981	Female	87%	50%
Grand Total	102,854	4,763,852	Grand Total	100%	100%
Age (Employed and Unemployed)					
	Healthcare Support Workforce	Total Ages 16 and Older		Healthcare Support Workforce	Total Ages 16 and Older
16-24	19,418	487,761	16-24	22%	16%
25-34	18,990	637,232	25-34	22%	20%
35-44	16,268	635,798	35-44	19%	20%
45-54	14,180	613,814	45-54	16%	20%
55-64	13,350	577,783	55-64	15%	18%
65 and Older	4,585	175,062	65 and Older	5%	6%
Grand Total	86,791	3,127,450	Grand Total	100%	100%
			<i>Average Age</i>	39.3	41.8
			<i>Median Age</i>	36.5	40.2
Employment Status					
	Healthcare Support Workforce	Total Ages 16 and Older		Healthcare Support Workforce	Total Ages 16 and Older
Employed	83,272	3,026,216	Employed	81%	64%
Unemployed	3,519	101,234	Unemployed	3%	2%
Not in Labor Force	16,040	1,636,402	Not in Labor Force	16%	34%
Grand Total	102,854	4,763,852	Grand Total	100%	100%
			<i>Unemployment Rate</i>	4.1%	3.2%
			<i>Labor Force Participation Rate</i>	84.4%	65.6%

Data or information needs?

Eric Grosso

eric.grosso@wi.gov

608.266.7803