

OCAR Congressional Plan C

Submitted by: Ohio Campaign for Accountable Redistricting, www.drawthelineohio.org

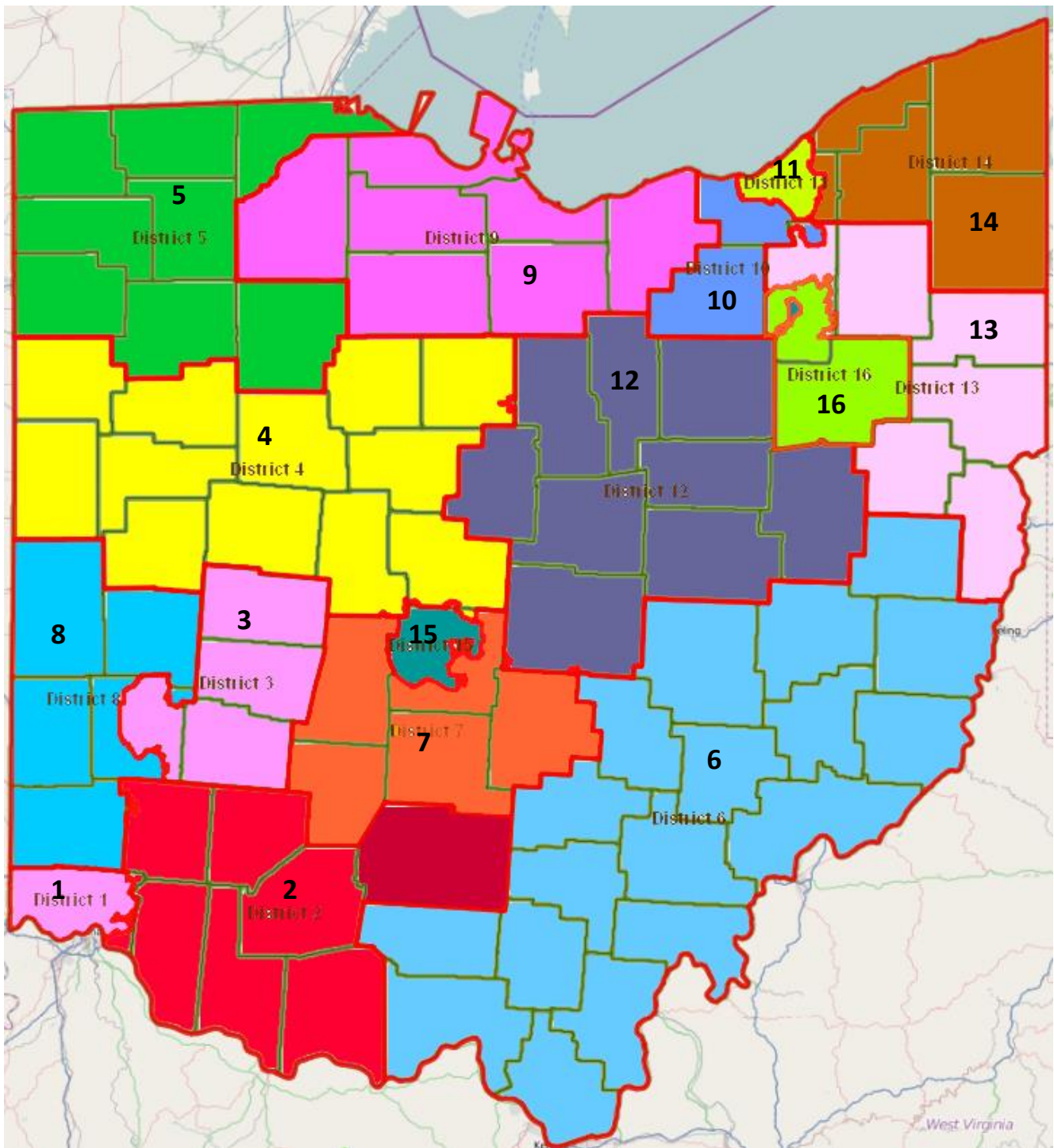
Jim Slagle, 85 E. Gay St., #713, Columbus, Ohio 43215; 614-221-6077

Date: Sept. 12, 2011

Author: Mike Fortner

Plan Name: mf competition congress (#1441)

Web link to full plan: <https://districtbuilder.drawthelineohio.org/districtmapping/plan/1441/view/>



Map Summary

This map was the highest scoring map in the competition sponsored by the Ohio Campaign for Accountable Redistricting. In addition to having the overall highest score, this map scored higher than any other maps in the compactness and created more heavily competitive districts than any other plan. In an effort to honor municipal boundaries, this map also demonstrates the option of crossing county lines to keep municipalities which cross county borders intact.

Highlights

- Only 9 county fragments are joined with other districts, as compared to 44 currently.
- Multiple municipalities which are split by county boundaries are kept together in the same congressional district. This includes the Delaware County portion of Columbus, Dublin, Westerville, Reynoldsburg, Middletown, Crestline, Plain City, and Buckeye Lake.
- 83 of Ohio's 88 counties are in a single district, except for that portion of a municipality which crosses county lines.
- Cuyahoga, Franklin, and Hamilton counties each have an entire district within the county.
- 11 of 16 districts are highly competitive.
- Fairly balanced between Republican and Democratic districts.

Competitive Districts

- 11 of 16 districts are heavily competitive (political index within 5%) – Districts 1, 3, 5, 6, 7, 9, 10, 13, 14, 15, 16.
- 5 districts are heavily noncompetitive (greater than 15% difference in political index) – Districts 2, 4, 8, 11, 12.
- In comparison only 6 of our current 18 districts are competitive.

Political Balance

- Four districts strongly favor Republicans (Republican index greater than 55%) – Districts 2, 4, 8, 12.
- One district strongly favors Democrats (Dem index greater than 55%) – District 11
- Three districts lean Republican (Rep index 51-55%) – Districts 3, 6, 10.
- Seven districts lean Democratic (Dem index 51-55%) – Districts 1, 5, 7, 13, 14, 15, 16.
- One district is even (Dem & Rep index 49-51%) – District 9.
- Depending on the election results, the districts could swing from 12 – 4 Democratic to 15 – 1 Republican.

District Statistics

Dist.	Tot Pop	Black VAP	Rep Partisan Index
1	723,843	26.58%	47.77%
2	722,976	2.93%	67.31%
3	720,811	17.15%	52.47%
4	717,840	4.09%	66.41%
5	718,302	11.75%	48.47%
6	720,761	2.61%	51.72%
7	717,553	22.80%	47.65%
8	722,910	5.45%	65.52%
9	722,666	5.55%	49.33%
10	724,339	5.63%	51.36%
11	717,583	48.01%	18.95%
12	719,259	2.98%	61.33%
13	723,882	7.36%	47.51%
14	723,067	5.51%	48.93%
15	717,895	12.39%	47.63%
16	722,817	9.96%	47.68%

KEY

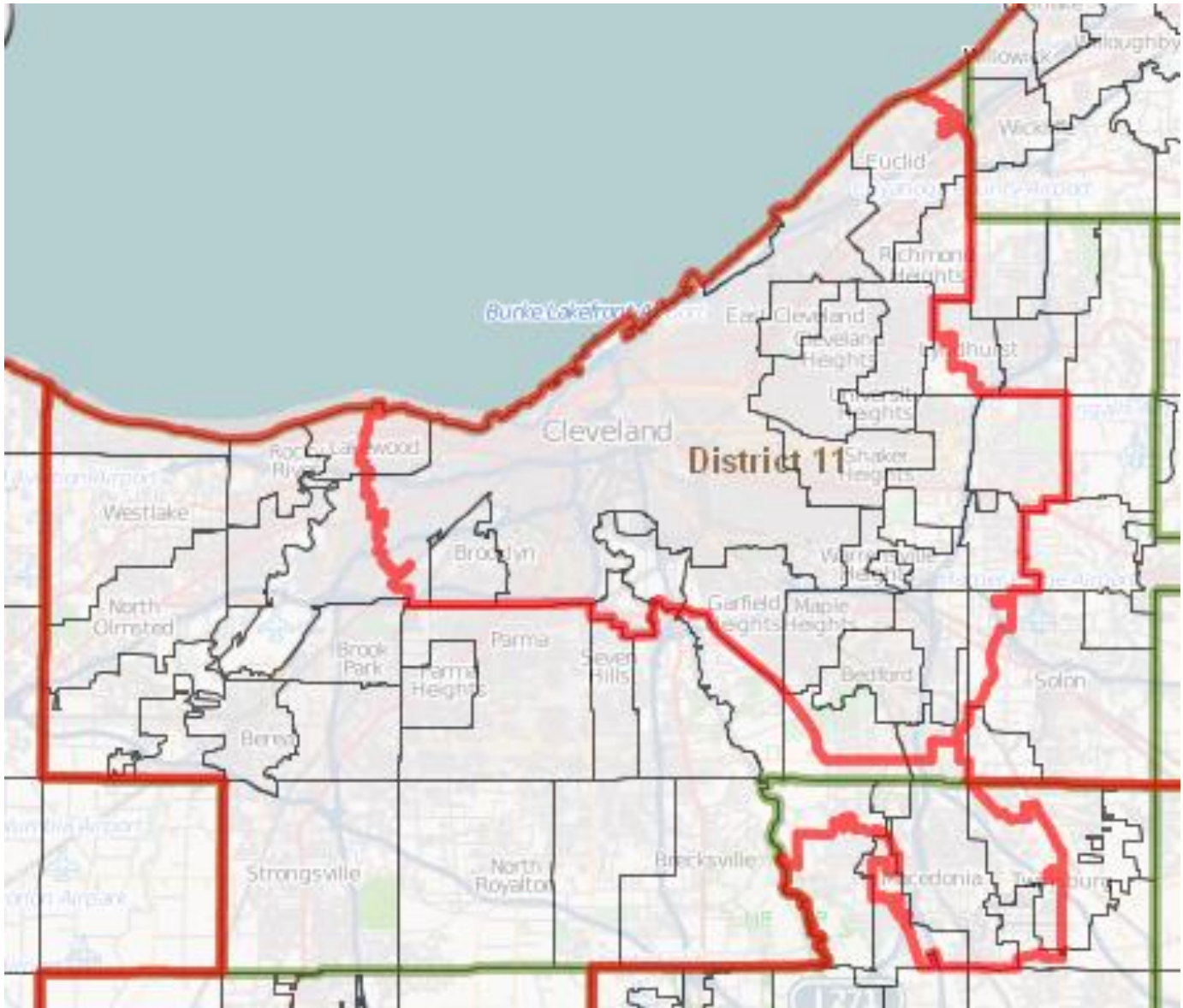
Tot Pop: Population in each district

Black VAP: Percentage of the voting age population which is African-American

Rep Partisan Index: Republican index based on the following elections: 2008 President, 2010 Governor, 2010 Auditor, 2010 Sec. of State. Percentage of total Democrat and Republican votes received by Republican candidates. Republican and Democratic Index will add to 100%.

Cuyahoga County Closeup

County population: 1,280,122



Red lines are district boundaries.

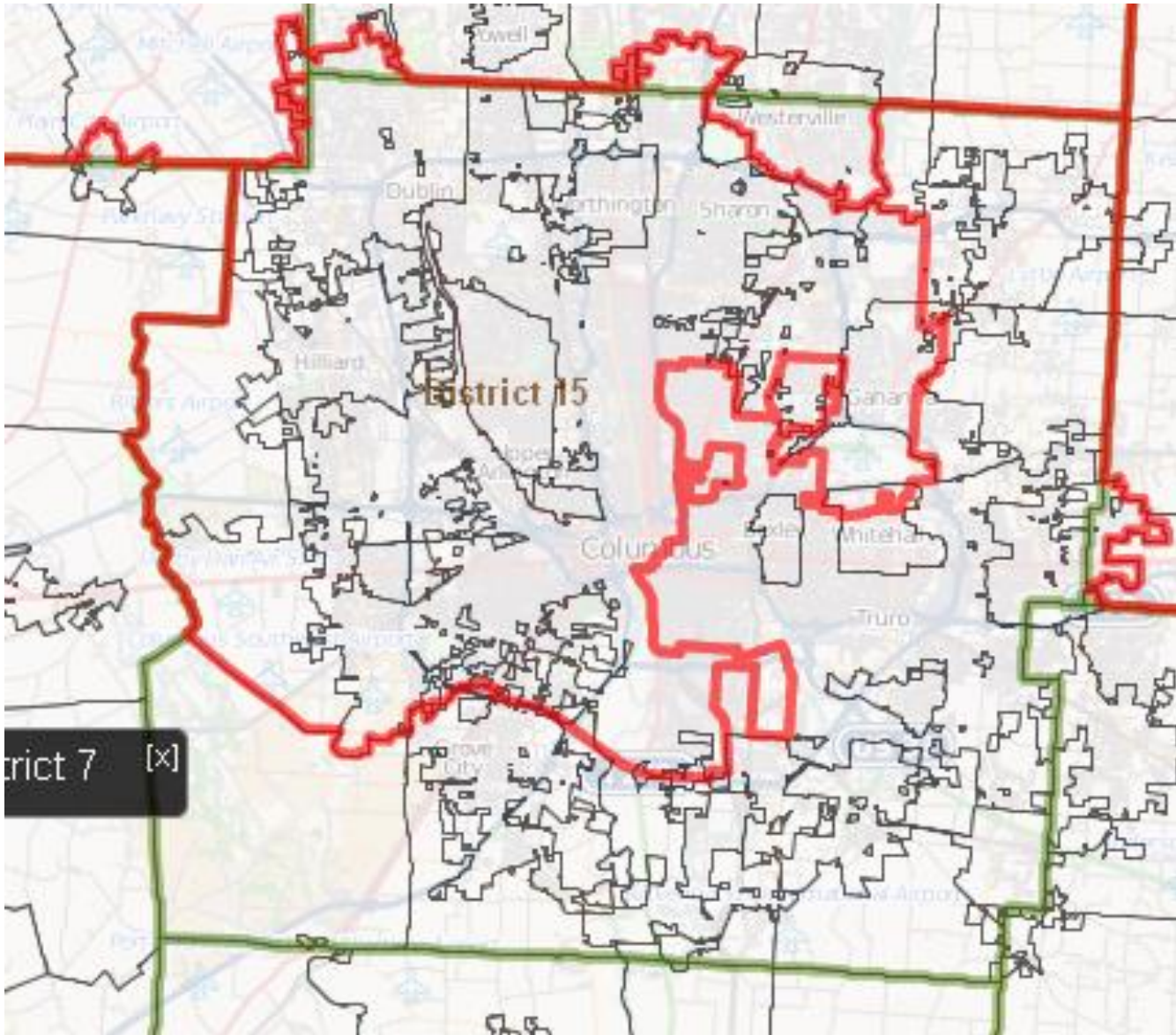
Green lines are county boundaries.

The 11th district is an African-American VRA district which includes nearly all of Cleveland and is solely within Cuyahoga County.

The eastern portion of the county, as it does now, attaches to the counties to the east to form the 14th district. The western portion of the county attaches to Medina County and a portion of Summit County to form the 10th district.

Franklin County Closeup

County population: 1,163,414



Red lines are district boundaries.

Green lines are county boundaries.

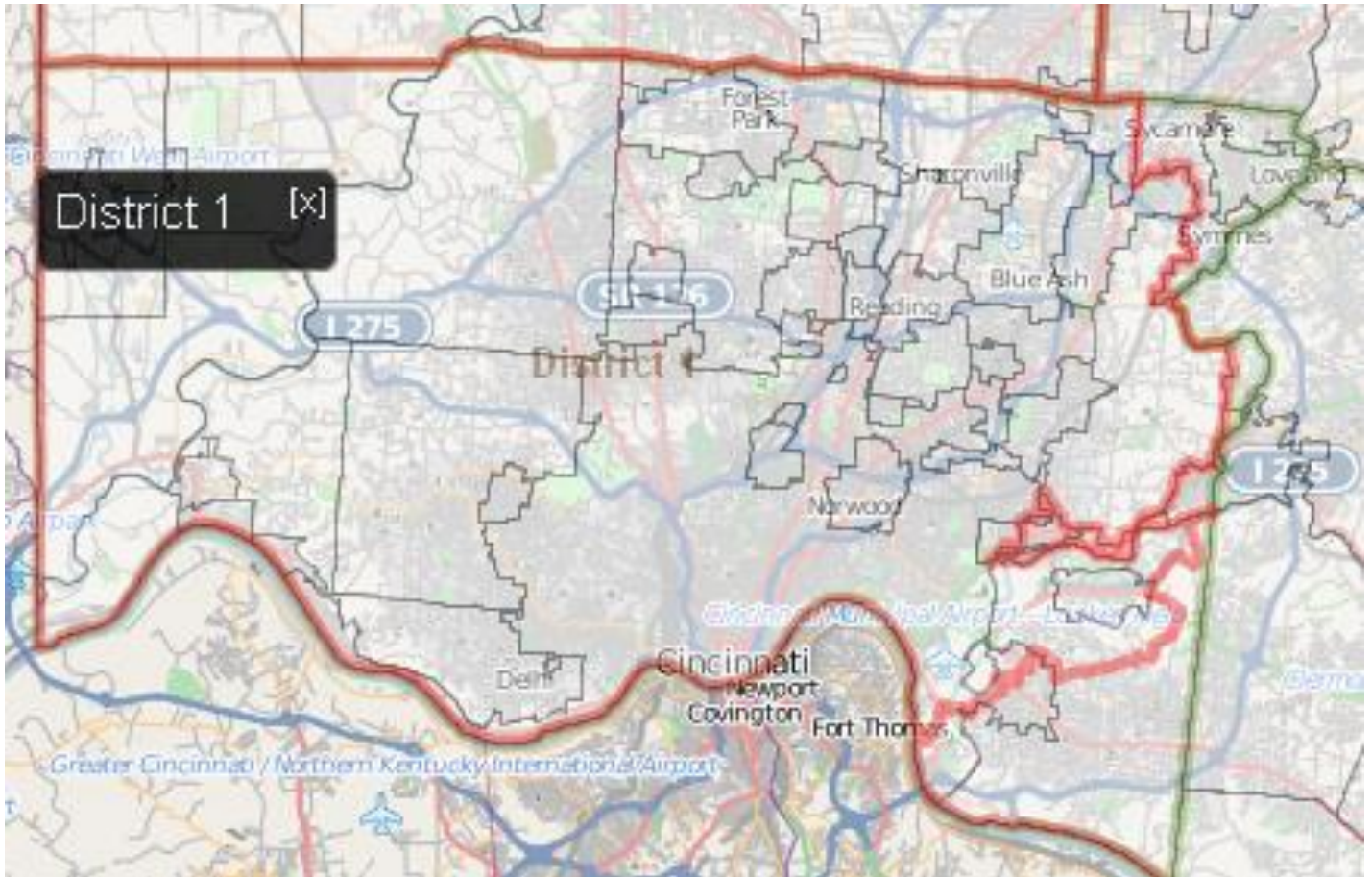
The 15th district is solely within Franklin County, except as is necessary to keep Dublin intact and to keep the Delaware County portion of Columbus with the rest of Columbus.

The rest of the county is in the 7th district, except Westerville (northern border of Franklin Co), which is kept intact with the Delaware portion of Westerville in the 4th district.

Note that the 7th District includes all of Pataskala which is in Licking and Franklin Counties (eastern border of Franklin Co) and all of Plain City which is in Madison and Union Counties (west of Franklin Co.) is kept intact.

Hamilton County Closeup

County population: 802,374



Red lines are district boundaries.

Green lines are county boundaries.

The 1st district is solely within Hamilton County and includes all of Cincinnati. Some eastern portions of the county become part of the 2nd districts.