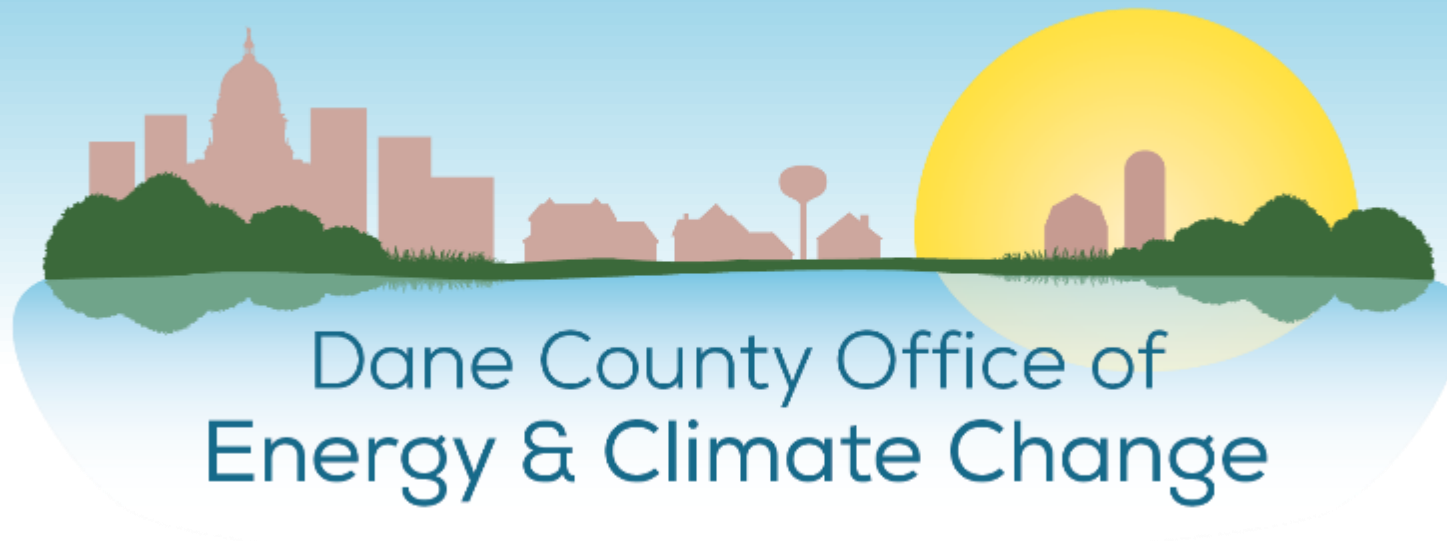


# Dane County's Climate Action Plan (CAP)

Dane County Board of Supervisors  
September 17, 2020



Kathy Kuntz, Acting Director

# Landfill Gas Facility Exemplifies Our Leadership



- Converts landfill gas to renewable natural gas (RNG)
- We sell RNG to Kwik Trip and fuel our own vehicles @ less than \$1.50/gallon
  - More than half of county snow plows converted to run on RNG
  - Reduced fuel costs, reduced emissions
- Facility pays for itself in just 4 years
- Also enable farm digesters to offload their RNG at our facility



# 100% Solar Power for County Operations in 2021



- 16 existing solar projects totaling 0.7 MW on various county facilities
- 9 MW solar project at Dane County airport, under construction now
- 18 MW solar project east of landfill, announced in April 2020

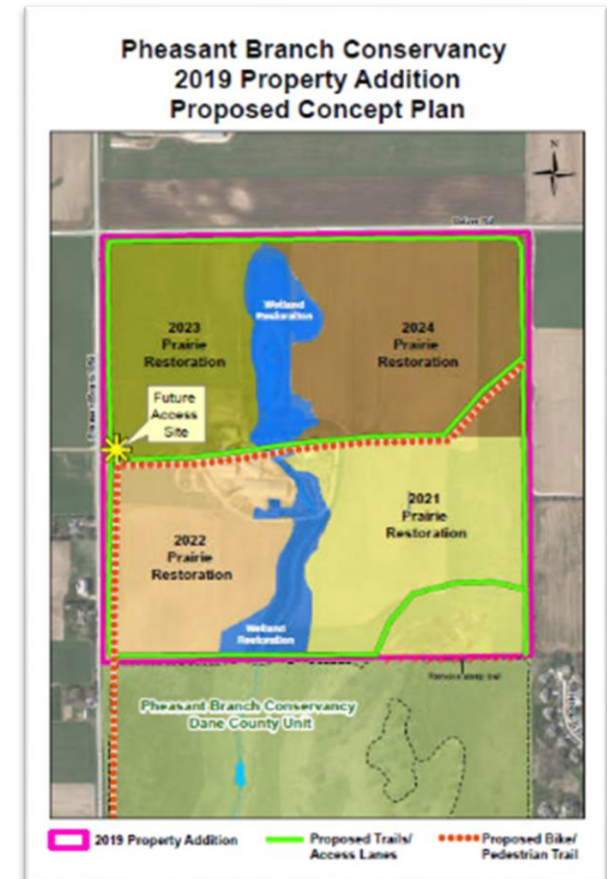






# Actively Adapting to a Changing Climate

- Dredging projects increase water flow through our chain of lakes
- Strategic land purchases protect and restore wetlands
- \$2.5M in grants to promote continuous cover crops



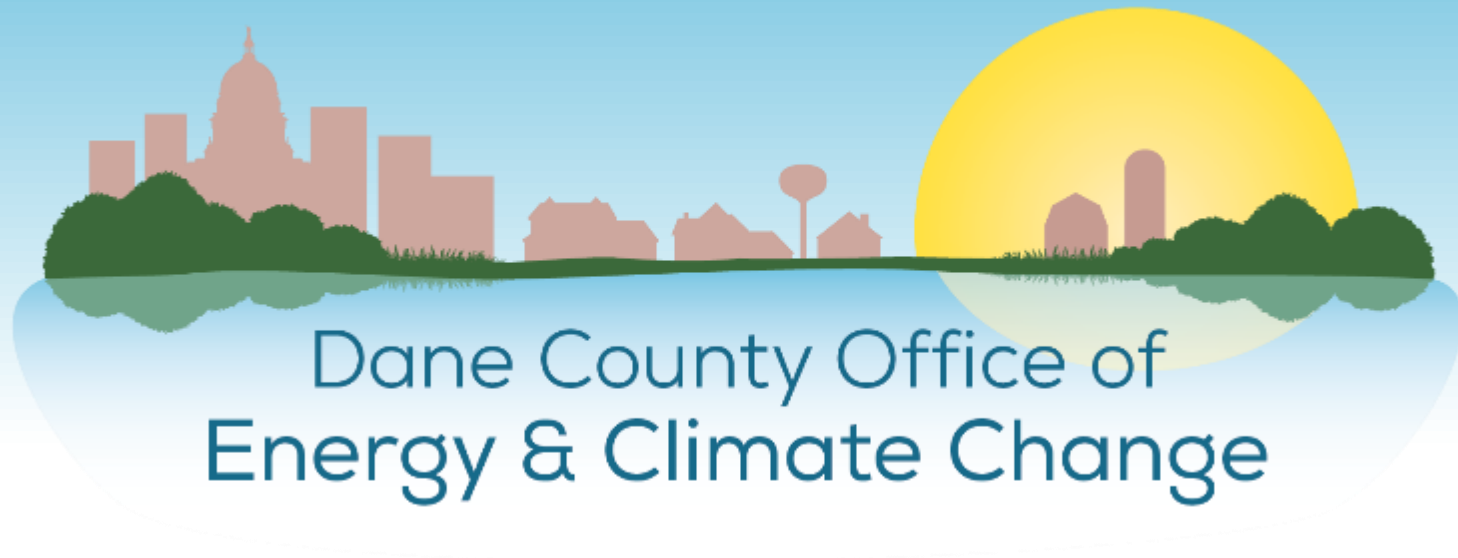


# Over 100 Miles of Bike Trails in the County

- \$15M in investments in off-road bike trails
- \$4.7M to local communities for bike lanes via PARC grants
- \$17M in investments in shoulder lane improvements



# The Climate Action Plan



Dane County Office of  
Energy & Climate Change



# Dane County Council on Climate Change

## 38 organizations with diverse perspectives

- 7 governments
- 3 utilities
- 7 businesses
- 2 agriculture organizations
- 4 community equity/justice organizations
- 6 environmental groups
- 3 UW-Madison groups
- 1 chamber of commerce
- Labor & law entities



# CAP: Pragmatic, Based in Science

## Guiding Principles

- Equity & Justice
- Economic Benefits
- Health Benefits
- Adaptation & Resiliency
- Bridging the Rural & Urban Divide
- Ecosystem Benefits

*Look at the **art of the possible**... Identify where we want to be and **figure out how to get there**... Win-win solutions should be the focus... **Look at data, find solutions.***

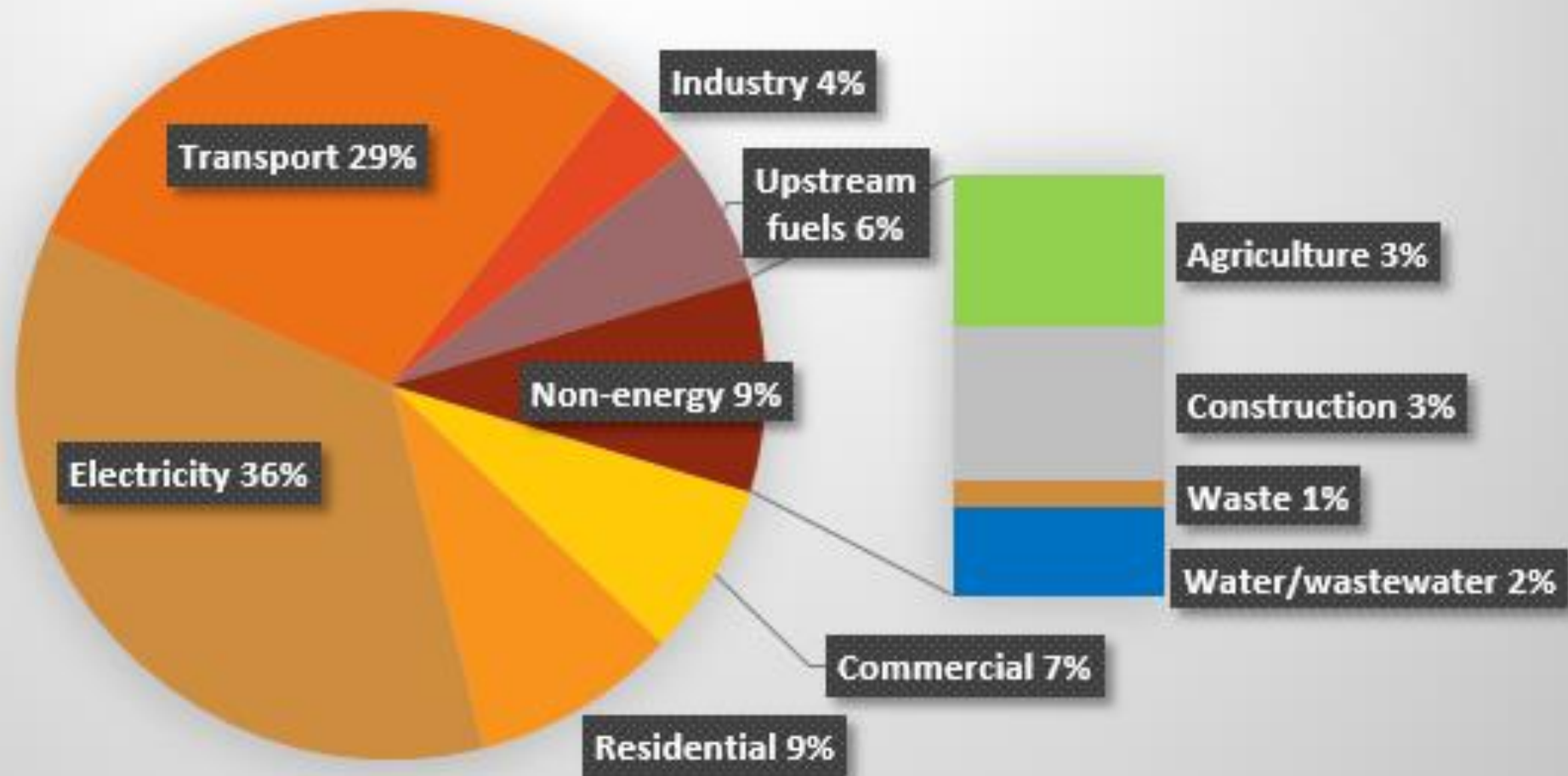
County Exec Joe Parisi, 1<sup>st</sup> Council Mtg





# County-Wide Emissions (2016) – 7.5MMtons

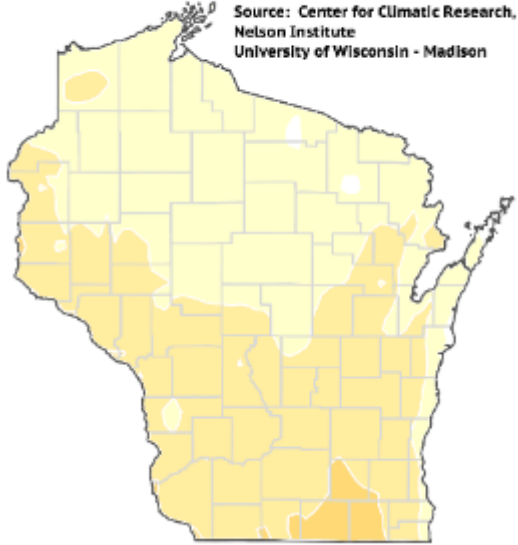
## Base Year Dane County Emissions (CO2-equiv)



# WICCI: Dane County Will Get Hotter, Wetter

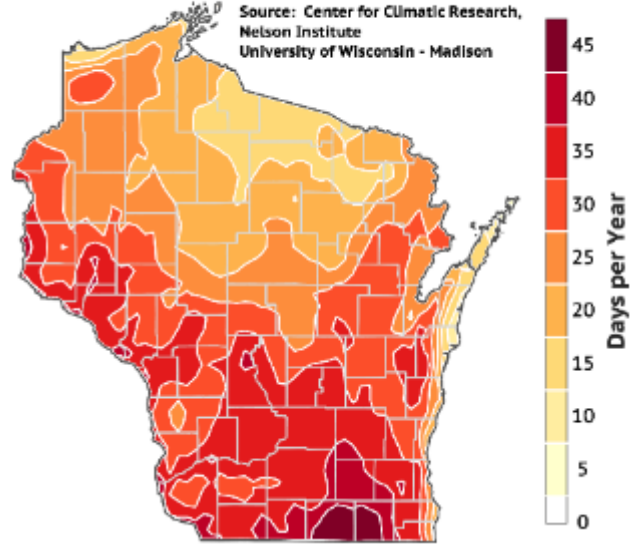
Days per Year with TMAX > 90°F  
1981-2010 Conditions (HISTORICAL)

Source: Center for Climatic Research,  
Nelson Institute  
University of Wisconsin - Madison



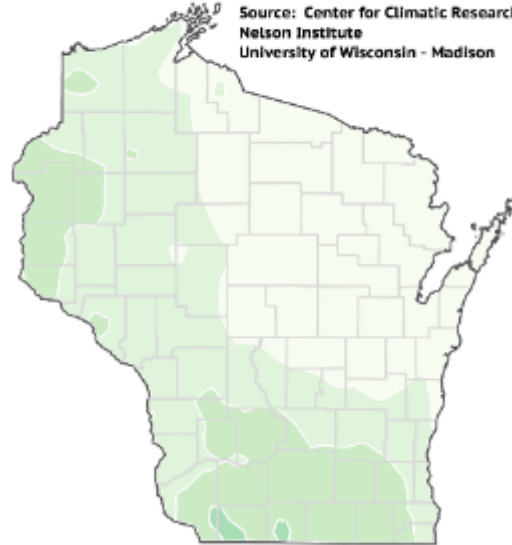
Days per Year with TMAX > 90°F  
2041-2060 Conditions (RCP85)

Source: Center for Climatic Research,  
Nelson Institute  
University of Wisconsin - Madison



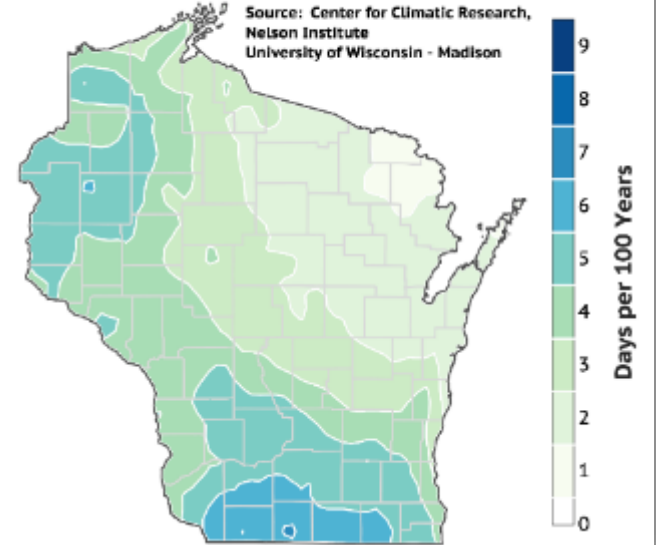
Days per 100 Years with PRCP > 5in  
1981-2010 Conditions (HISTORICAL)

Source: Center for Climatic Research,  
Nelson Institute  
University of Wisconsin - Madison



Days per 100 Years with PRCP > 5in  
2041-2060 Conditions (RCP85)

Source: Center for Climatic Research,  
Nelson Institute  
University of Wisconsin - Madison



# Subject-Matter Working Groups: 100+ Recommendations

- Buildings
- Energy Efficiency
- Energy Generation / Renewables / Energy Storage
- Transportation and Land Use
- Agriculture & Forestry / Food
- Waste Materials
- Water
- Adaptation
- Modeling
- Financing
- Public Engagement



# Outcomes We're Pursuing

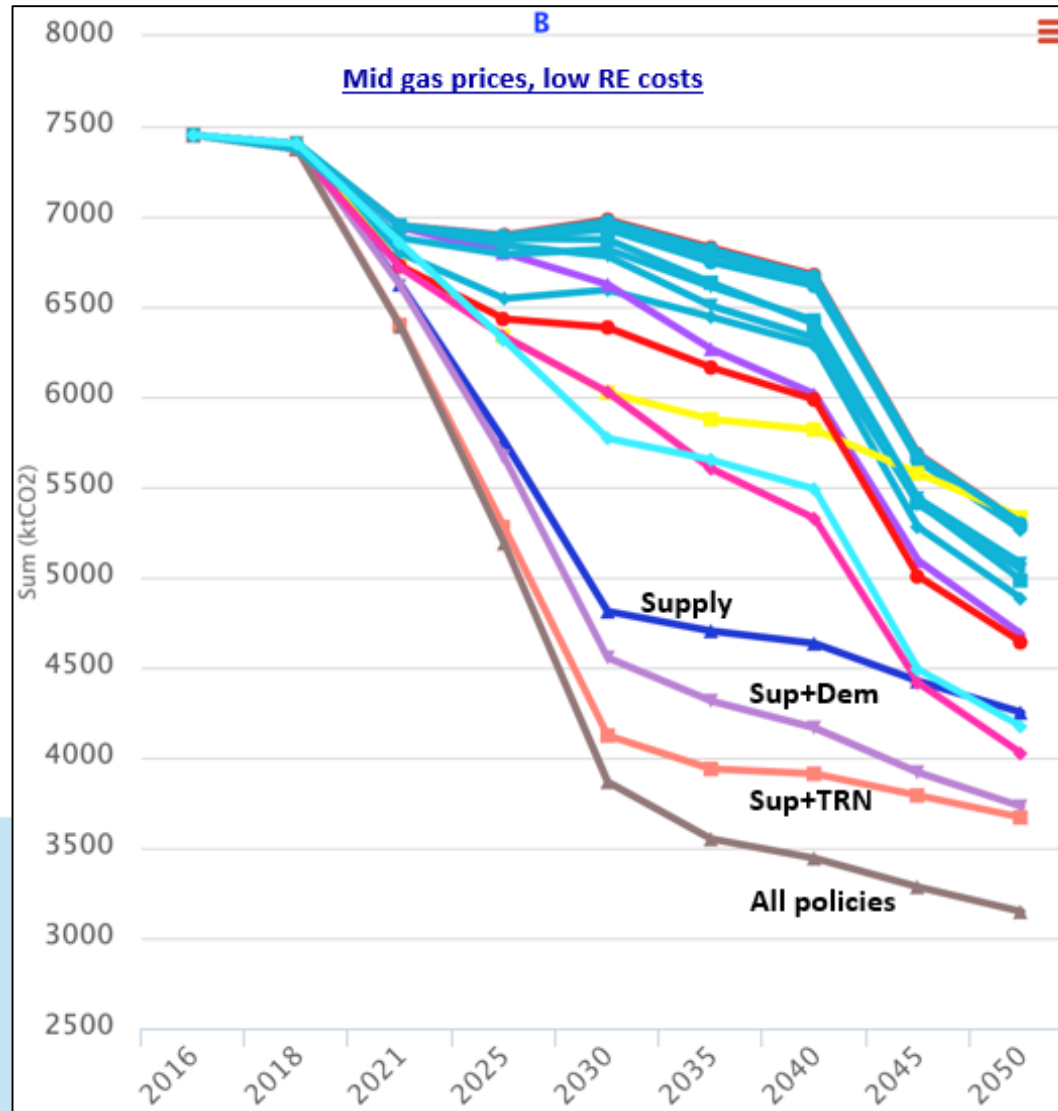
Emissions Targeted	Goal
Energy Usage	Reduce 2% annually by 2030, 3% by 2035 and 4% by 2040
Commercial building energy use	Reductions by 2025 with all new buildings using 75% less energy by 2040
Heat pumps	Convert ½ LP and oil heat homes by 2030; all by 2045 All new homes with heat pumps by 2040
Water – per capita demand	Decrease by 20% by 2030 and by 30% by 2040
Solar	1200 MW installed by 2030; with wind meet 100% of load by 2045
Wind	Meets half Dane County load by 2030; with solar meet 100% by 2045
Manure in anaerobic digesters	Half of all manure in county by 2030; 100% by 2050
Electric Vehicles (EVs)	57% sales share by 2040
Heavy-Duty Vehicles	60% use biogas by 2026
Transit buses	50% are electric by 2035
Vehicle Miles Traveled (VMTs)	15% reduction in total VMTs by 2050





# Combining the policies leads to deep emissions reductions

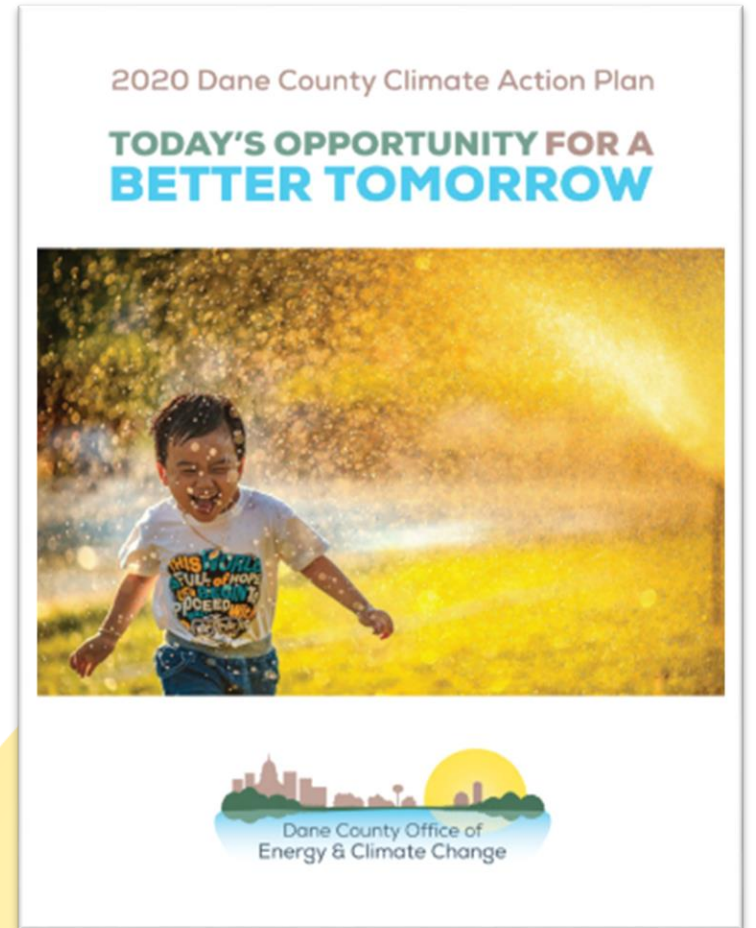
Energy-related GHG Emissions (Thousand metric tons CO<sub>2</sub>-equivalent)



**Supply:** Wind + Solar  
**Demand:** EE + Bldgs + HP  
**Transport:** VMT + EVs + Biogas

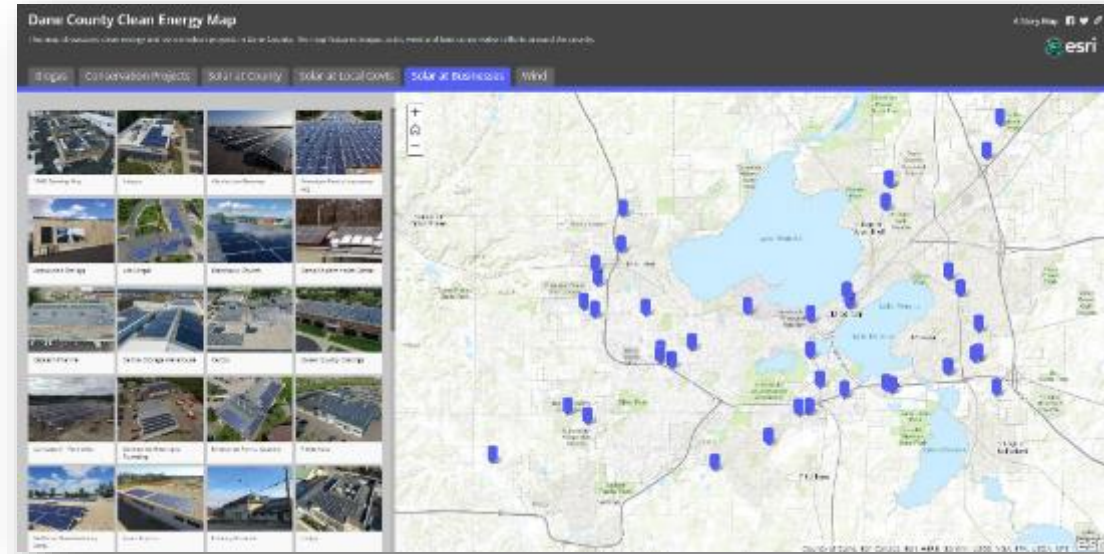
# The CAP is just the beginning...

- Engage everyone
  - We are all part of the solution
  - Together we'll create a stronger Dane County
- Implement CAP recommendations
  - Keeping in mind guiding principles
- Monitor progress
- Identify new initiatives to tackle remaining emissions



# How Everyone Can Help

- Read the CAP
- Talk to your family and friends about climate change
- Help us identify and celebrate success stories
  - New Climate Champions program
- Reduce waste at home and at work
- Share your thoughts and ideas with us



# Questions? Comments?

Kathy Kuntz

[Kuntz.Kathryn@countyofdane.com](mailto:Kuntz.Kathryn@countyofdane.com)

[Daneclimateaction.org](http://Daneclimateaction.org)

