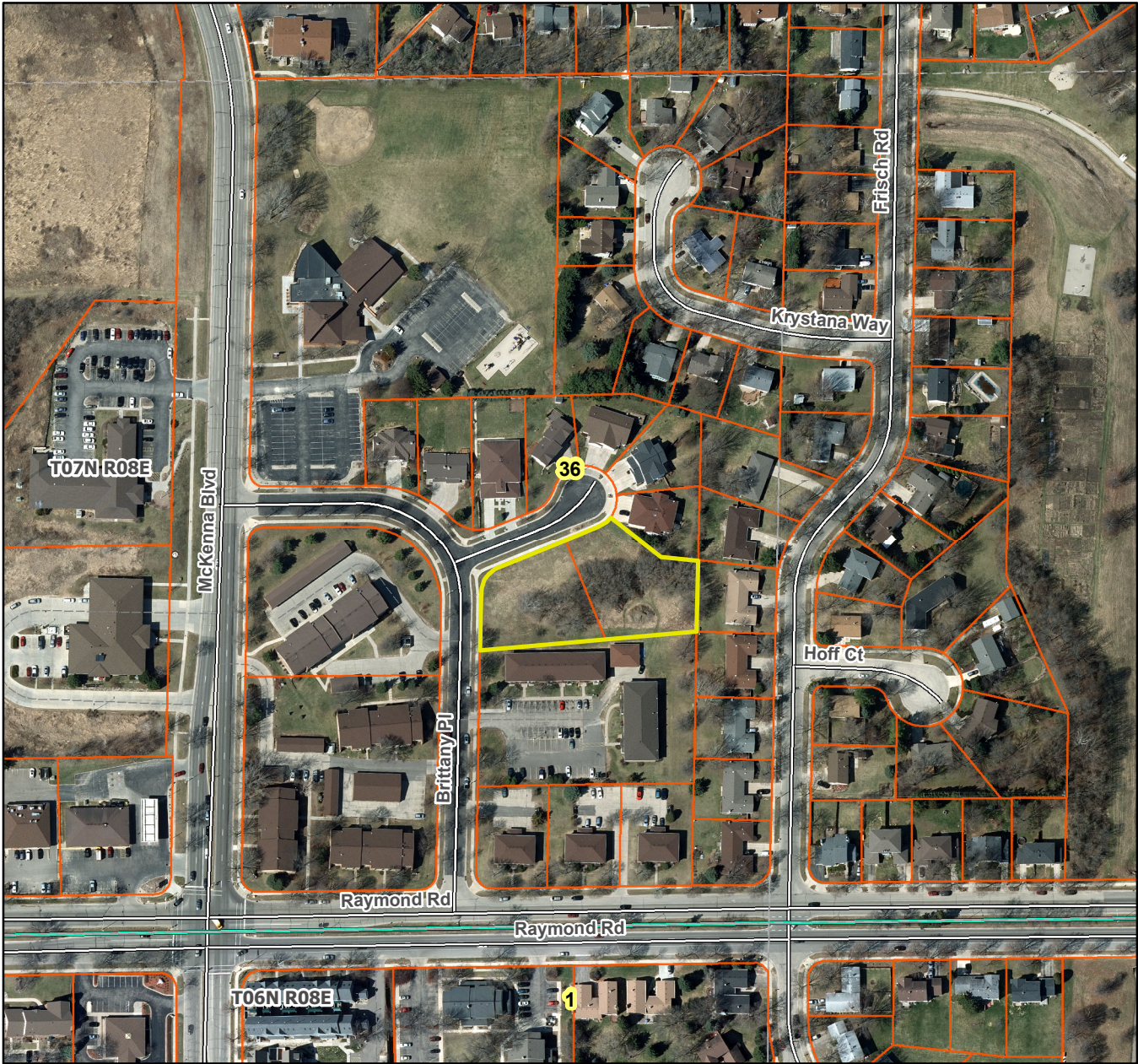


Delores Lillge Subdivision

City of Madison T07N R08E, Section 36



Plat consists of 6 lots, 1.11 acres. (Replat)

Parks – None associated within these lots. Elver Park to the west.

Parkways – N/A

Expressways – N/A

Major Highways – Raymond Rd. to the south.

Airports – Dane County Regional Airport (14 mi)

Drainage Channels – All lots are subject to public easements for drainage purposes.

Schools – Established.