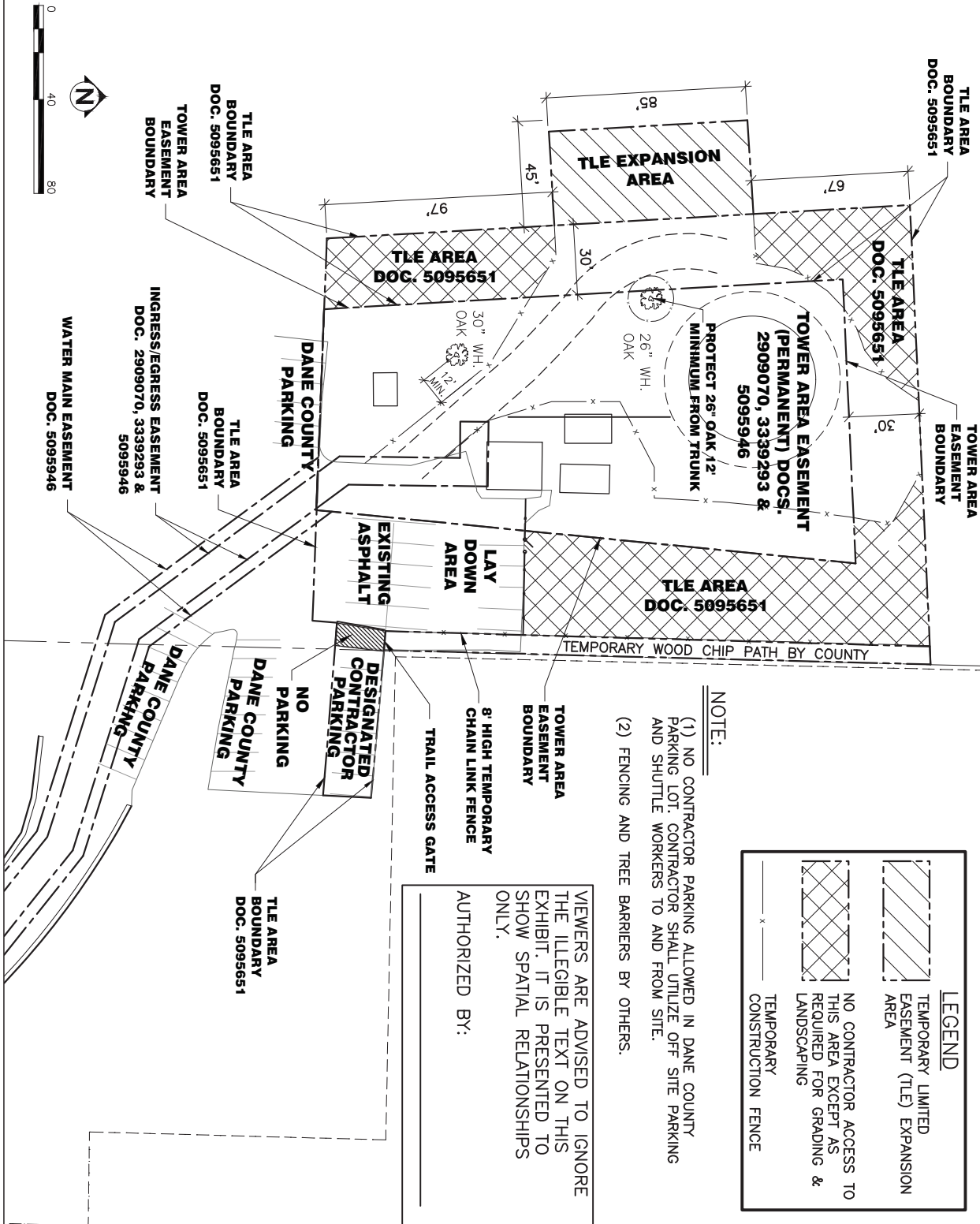


EXHIBIT F



NOTE:

- (1) NO CONTRACTOR PARKING ALLOWED IN DANE COUNTY PARKING LOT. CONTRACTOR SHALL UTILIZE OFF SITE PARKING AND SHUTTLE WORKERS TO AND FROM SITE.
- (2) FENCING AND TREE BARRIERS BY OTHERS.

LEGEND	
	TEMPORARY LIMITED EASEMENT (TLE) EXPANSION AREA
	NO CONTRACTOR ACCESS TO THIS AREA EXCEPT AS REQUIRED FOR GRADING & LANDSCAPING
	TEMPORARY CONSTRUCTION FENCE

VIEWERS ARE ADVISED TO IGNORE THE ILLEGIBLE TEXT ON THIS EXHIBIT. IT IS PRESENTED TO SHOW SPATIAL RELATIONSHIPS ONLY.

AUTHORIZED BY: _____