

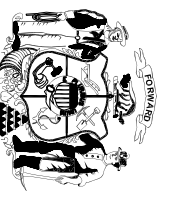
NORTH 1/4 CORNER
SECTION 10-07-11
ALUMINUM MONUMENT
FOUND

60' radius Temporary turnaround easement, recorded on separate document. To be eliminated at such time street is extended.

N88°52'55"E 1328.28'
(N88°52'55"E 1328.28')

There are no objections to this plat with respect to Secs. 236.15, 236.16, 236.20 and 236.21(1) and (2), Wis. Stats. as provided by s. 236.12, Wis. Stats.

Department of Administration



60' radius Temporary turnaround easement, recorded on separate document. To be eliminated at such time street is extended.

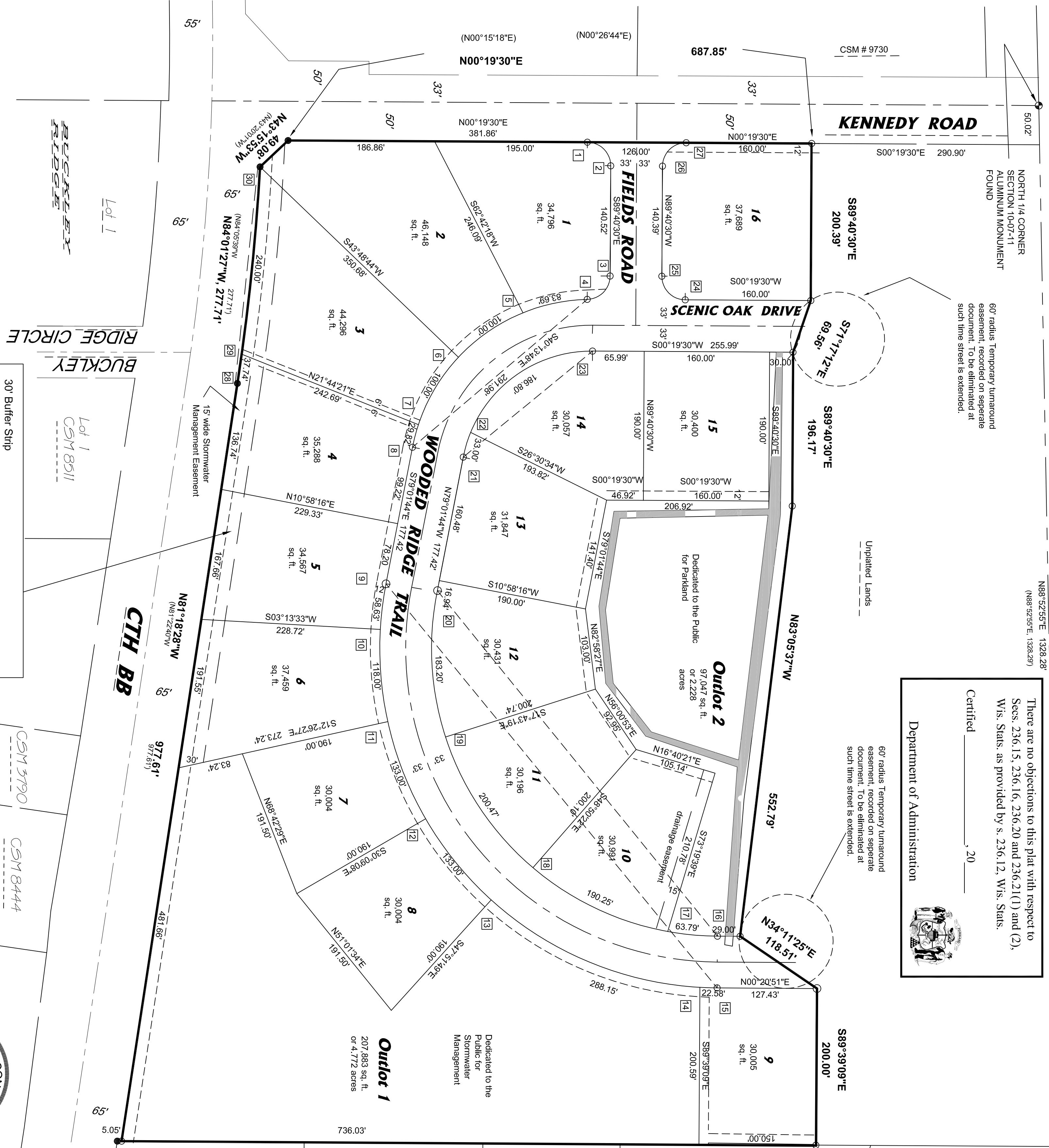
N88°53'45"E

1 1/4" = 80'

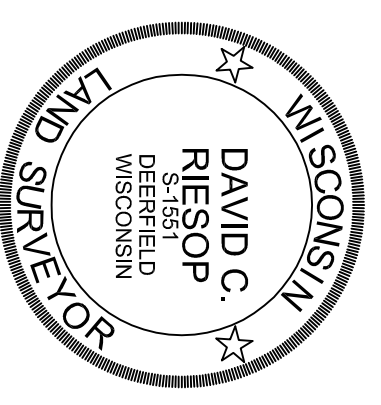
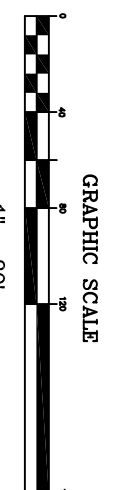
2656.19'

N88°54'35"E 1327.91'
(N88°58'11"E 1327.93')

NORTHEAST CORNER
SECTION 10-07-11
ALUMINUM MONUMENT
FOUND



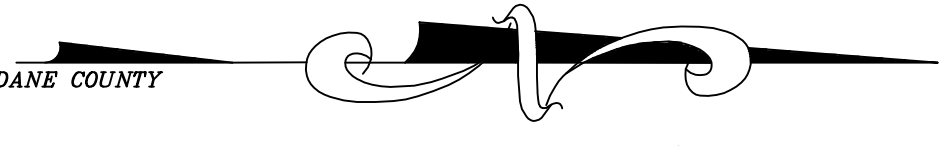
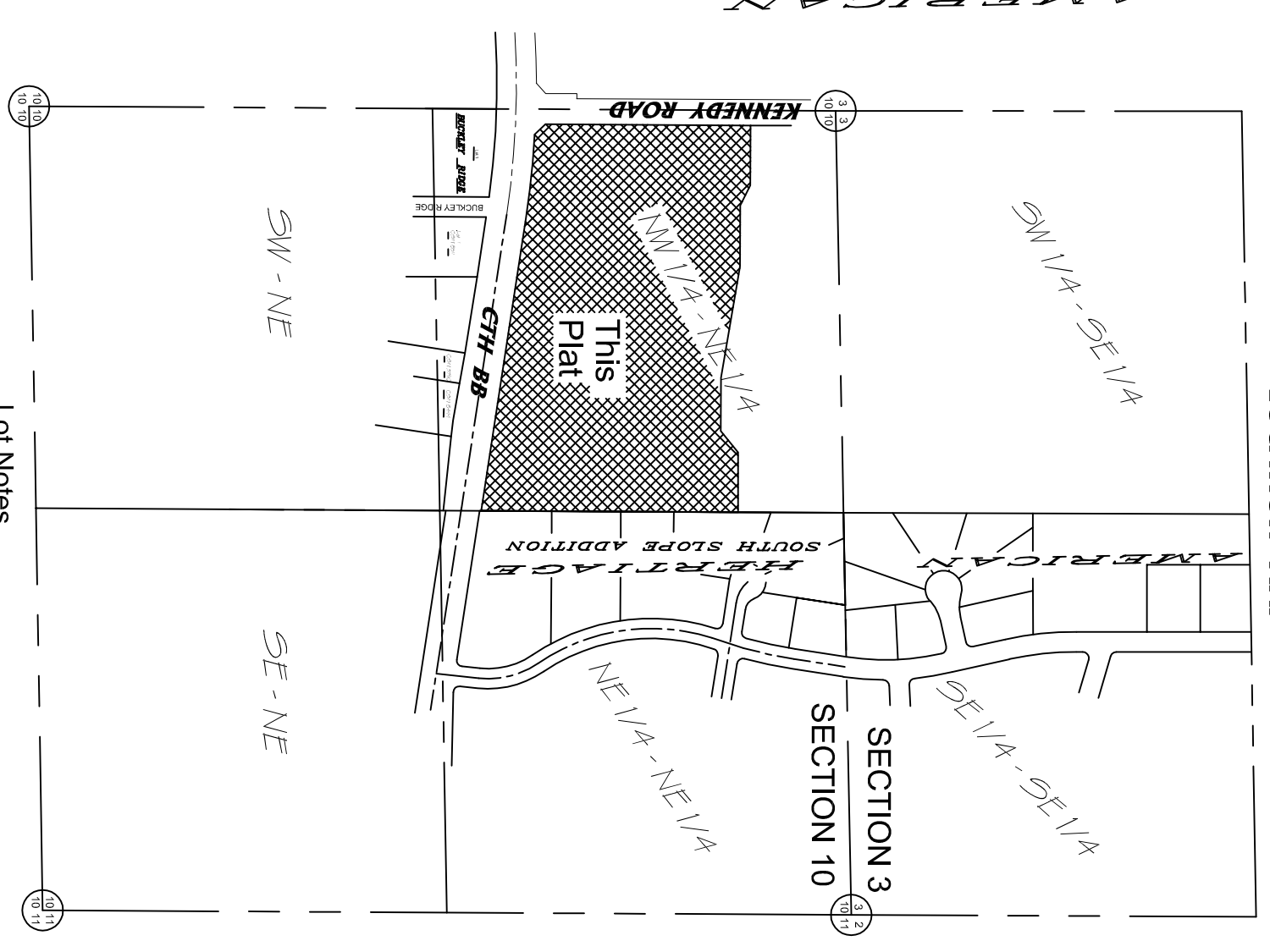
30' Buffer Strip
"This strip reserved for the planting of trees or shrubs by the owner, the building of structures hereon is prohibited, and the rear 30 feet of the strip shall not be counted as any required yard. Maintenance of this strip is a responsibility of the lot owner."



Part of the Northwest 1/4 of the Northeast 1/4 of Section 10, T.7N., R.11E., Town of Cottage Grove, Dane County, Wisconsin.

KENNEDY HILLS

LOCATION MAP



Referenced to the Dane County Coordinate System, with the overall North line of the NE 1/4 bearing N88°53'45"E

Legend
 ● = 3/4" dia. solid from rod found unless otherwise noted
 ○ = 1" dia. pipe found unless otherwise noted
 ○ = 1 1/4" dia. x 24" long solid from rod set, 4.17 lbs. per linear foot
 All other lot corners are marked by a 3/4" dia. x 18" long solid from reinforcing rod, 1.50 lbs. per linear foot
 = When different, parentheses indicate recorded as values

Lot Notes
 1) Lot zoning is SFR-08
 2) Building setbacks are Front = 30', Side = 10' minimum each side Rear = 50'

All distances shown along a curved line are chord length distances. In cases of overlap, Stormwater Drainage Easements have precedent over utility easements

CURVE TABLE

Curve	Delta Angle	Radius	Long Chord	Arc	Tangent Bearings
1-2	90°00'00"	30.00'	N45°19'30"W 42.43'	47.12'	N00°19'30"E S89°40'30"E
3-4	88°14'38"	30.00'	S45°33'11"E 41.77'	46.20'	S89°40'30"E S01°25'52"E
4-5	20°41'32"	233.00'	S11°46'38"E 83.69'	84.15'	S01°25'52"E S22°07'24"E
5-6	24°47'02"	233.00'	S34°30'55"E 100.00'	100.78'	S22°07'24"E S46°54'26"E
6-7	24°47'02"	233.00'	S59°17'57"E 100.00'	100.78'	S46°54'26"E S71°41'28"E
7-8	07°20'16"	233.00'	S75°21'36"E 29.82'	29.84'	S71°41'28"E S79°01'44"E
8-9	07°20'16"	233.00'	S40°13'48"E 29.82'	29.84'	S79°01'44"E S86°47'34"E
9-10	07°45'50"	433.00'	S82°54'39"E 58.63'	58.67'	S86°47'34"E N77°32'40"E
10-11	15°39'46"	433.00'	N85°22'32"E 118.00'	118.37'	S86°47'34"E N59°52'32"E
11-12	17°40'08"	433.00'	N51°02'38"E 133.00'	133.53'	N59°52'32"E N22°12'24"E
12-13	17°40'08"	433.00'	N22°46'17"E 288.15'	293.76'	N22°12'24"E N03°30'10"E
13-14	08°52'14"	433.00'	N01°50'50"E 222.58'	223.00'	N03°30'10"E N00°20'51"E
14-15	08°52'14"	433.00'	N50°30'51"E 666.41'	760.44'	N00°20'51"E S00°20'51"E
15-16	16°17'09"58"16"	367/00'	S05°19'59"W 63.79'	63.87'	S00°20'51"W S10°19'01"W
16-17	30°02'44"	367/00'	S25°12'59"W 190.23'	192.45'	S10°19'01"W S40°21'51"W
17-18	31°41'58"	367/00'	S56°12'02"W 200.47'	203.05'	S40°21'51"W S72°03'49"W
18-19	28°54'27"	367/00'	S50°39'53"E 564.83'	644.53'	S72°03'49"W N79°01'44"W
19-20	11°20'26"	167/00'	N73°21'31"W 33.00'	33.03'	N79°01'44"W N07°14'18"W
20-21	68°00'48"	167/00'	N33°40'54"W 186.80'	198.24'	N07°14'18"W N00°19'30"E
21-22	79°21'14"	167/00'	N39°21'07"W 213.24'	231.29'	N00°19'30"E N89°40'30"E
22-23	90°00'00"	30.00'	N44°40'30"W 42.43'	47.13'	N89°40'30"W N00°19'30"E
23-24	90°00'00"	30.00'	N84°40'37"W 37.74'	37.74'	N00°19'30"E N82°02'46"W
24-25	00°44'18"	2930.00'	N84°23'36"W 240.00'	240.07'	N82°02'46"W N86°44'26"W
25-30	05°25'58"	2930.00'	N84°01'27"W 277.71'	277.81'	N86°44'26"W N81°18'28"W