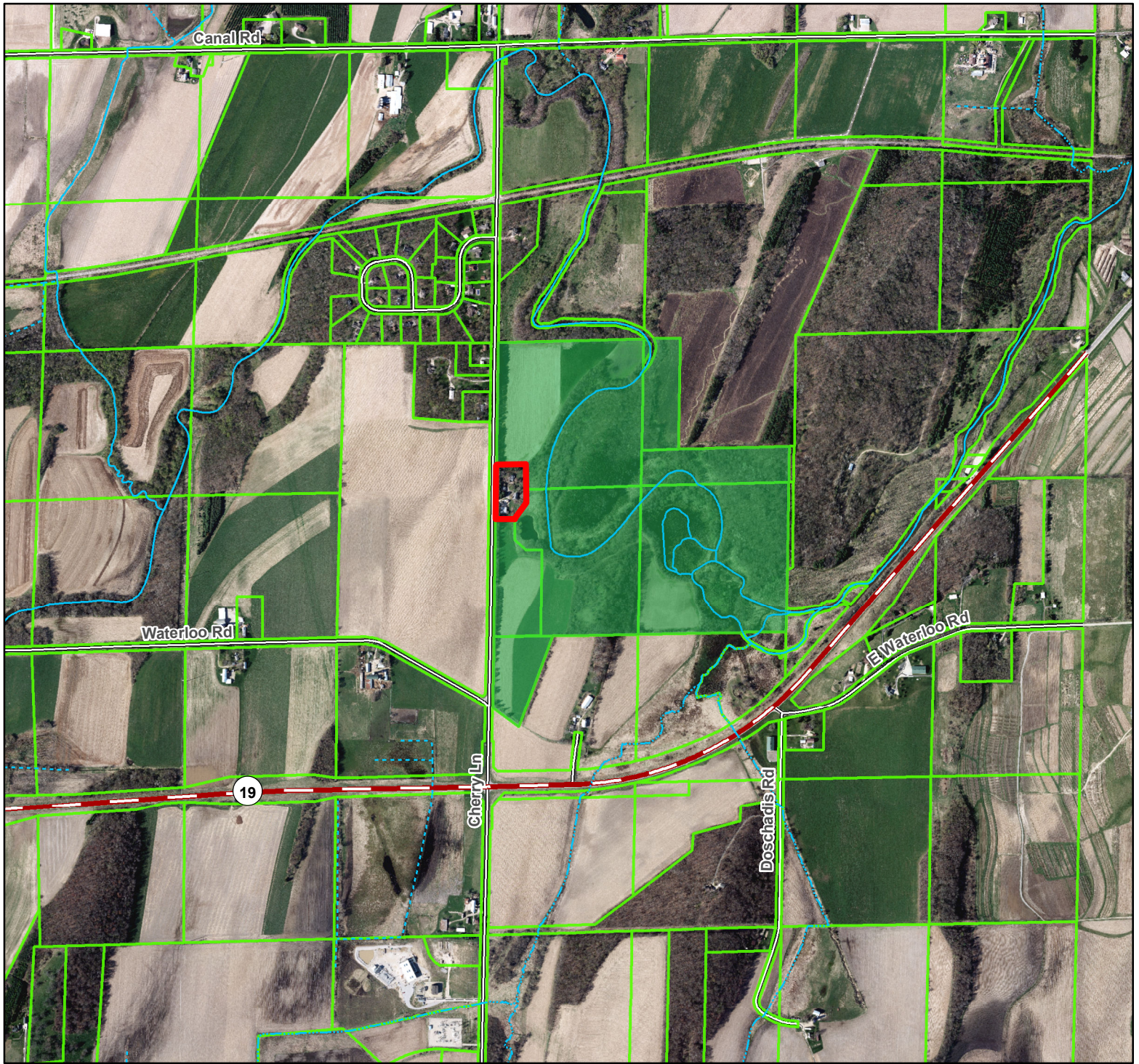


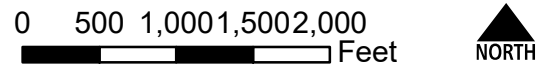


George J. Socha Sr. donation - 2.83 acres, Town of Medina
Joyce M. Baer and George J. Socha Conservancy



-  Subject Parcel
-  County owned



Data Sources:
Tax Parcels (3-2020)
Digital orthophoto from April 2017.

Prepared by Dane County Land & Water Resources Department, October 15, 2021.

Document Path: H:\LandAcquisition\AcquisitionProjects\Medina\Socha\Socha_2021\Maps\Socha_ConservancyAreaMap.mxd

