

# Final Plat - Eighth Addition to Smith's Crossing City of Sun Prairie

Plat consists of 6 lots, 1 Outlots, 0.67 acres.

Parks - None shown.

Parkways - none

Expressways - N/A

Major Highways - USH 151 to the north (approx. 1 mile).

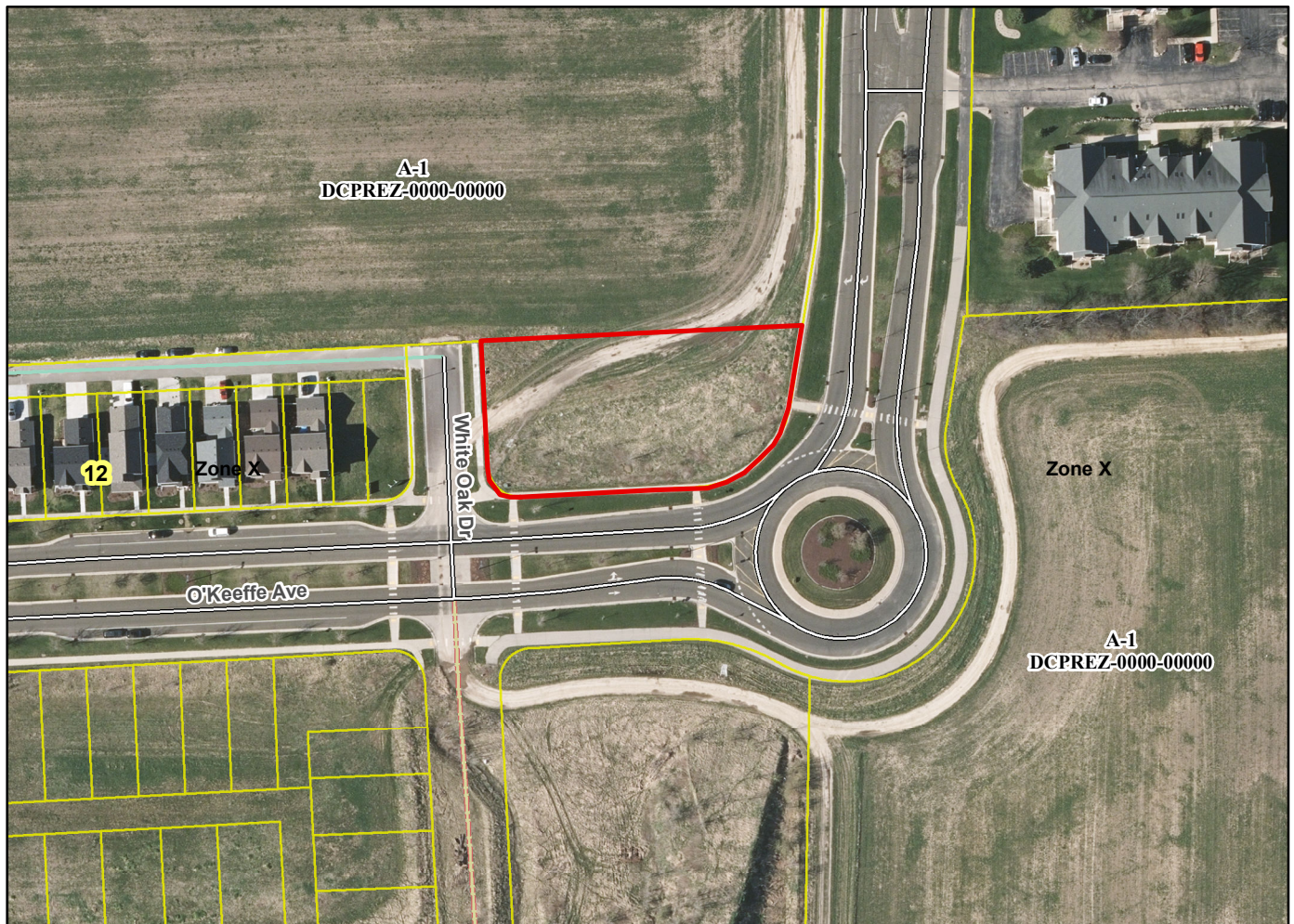
Airports - Dane County Regional

Drainage Channels - Drainage arrows shown indicate the direction of surface drainage swale at individual property lines.

Schools - established

Other Development - OL 79 is reserved for private alley.

Plats of subdivisions located in all other incorporated municipalities shall be submitted to the committee, as provided by section 236.12(2)(b) of the Wis. Stats., for the purpose of determining whether the committee has any objection to the plat. The basis for any objection to any such plat shall be that the plat conflicts with parks, parkways, expressways, major highways, airports, drainage channels, schools or other planned public developments.



Motion to certify with no objections: \_\_\_\_\_, Second: \_\_\_\_\_ Vote: \_\_\_\_\_