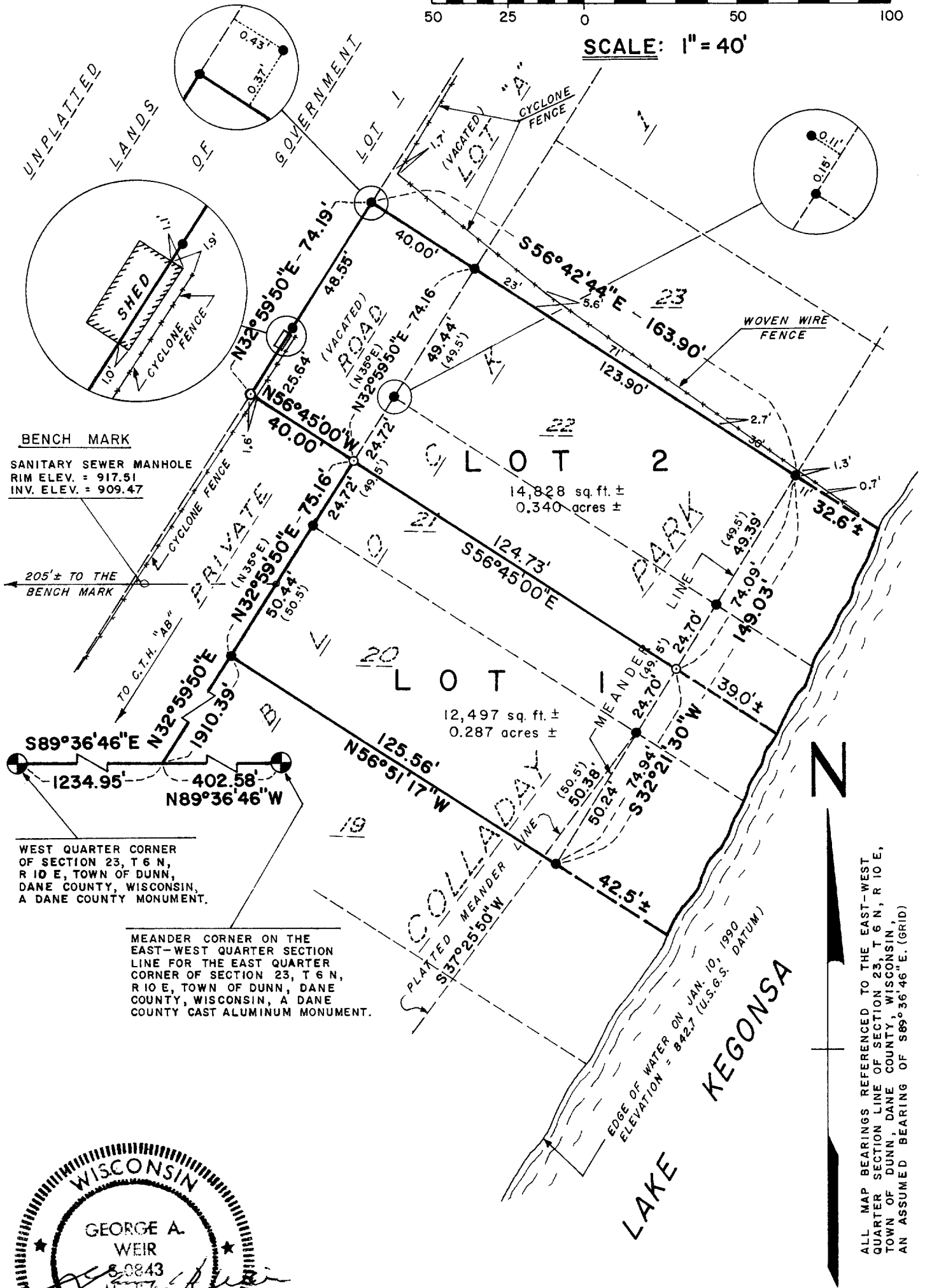


SCALE: 1" = 40'

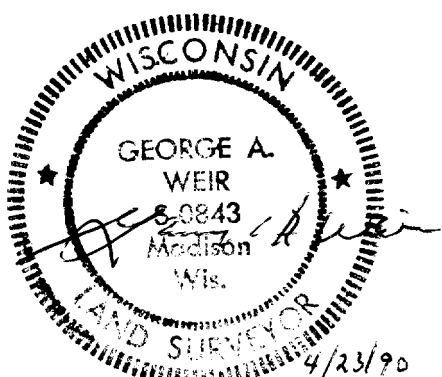


BENCH MARK
 SANITARY SEWER MANHOLE
 RIM ELEV. = 917.51
 INV. ELEV. = 909.47

WEST QUARTER CORNER
 OF SECTION 23, T 6 N,
 R 10 E, TOWN OF DUNN,
 DANE COUNTY, WISCONSIN,
 A DANE COUNTY MONUMENT.

MEANDER CORNER ON THE
 EAST-WEST QUARTER SECTION
 CORNER OF SECTION 23, T 6 N,
 R 10 E, TOWN OF DUNN,
 DANE COUNTY, WISCONSIN,
 A DANE COUNTY CAST ALUMINUM MONUMENT.

ALL MAP BEARINGS REFERENCED TO THE EAST-WEST
 QUARTER SECTION LINE OF SECTION 23, T 6 N, R 10 E,
 TOWN OF DUNN, DANE COUNTY, WISCONSIN,
 AN ASSUMED BEARING OF S 89° 36' 46" E. (GRID)



DOCUMENT NO. 2231604
 CERTIFIED SURVEY MAP NO. 6244, VOLUME 30 PAGE 121