

Babcock County Park Project Area Boundary

4601 Burma Road
McFarland, WI 53558



Lake Waubesa

US 51

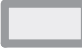



Babcock County Park
Project Area

Exhibit #2

File Path: H:\Parks\Mapping\Parks\Babcock\Maps\AccessibleShorelineImprovements_RFP



Legend

- | | | | |
|---|-----------------------|---|-------------|
|  | Babcock County Park |  | US 51 |
|  | Project Area Boundary |  | Local Roads |

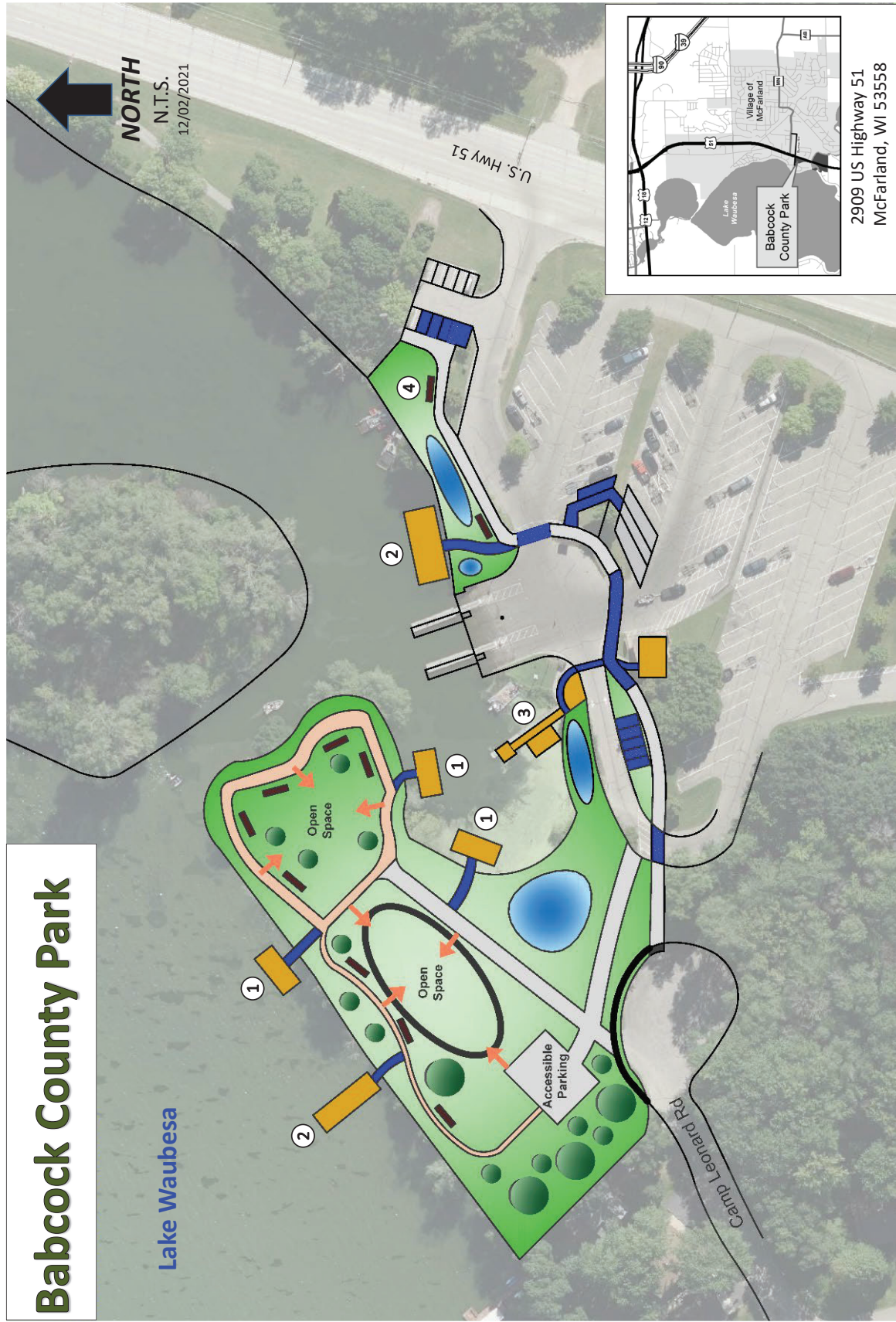


Accessible Public Shoreline Opportunities

Conceptual Site Development Plan

Babcock County Park

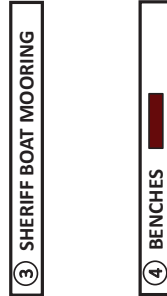
Lake Waubesa



① ACCESSIBLE FISHING PIERS



② ACCESSIBLE LIFT



③ SHERIFF BOAT MOORING



④ BENCHES

2909 US Highway 51
McFarland, WI 53558



FISH CAMP COUNTY PARK ACCESSIBLE FISHING/BOATING CONCEPT PLAN



**Fish Camp County Park
Accessible Fishing/Boating Improvement**

Existing fishing pier



Example of what a new fishing pier may look like



Example of what a new kayak launch pier may look like



Lower Yahara River Trail Phase 2: Fish Camp County Park to Lake Kegonsa State Park Segment

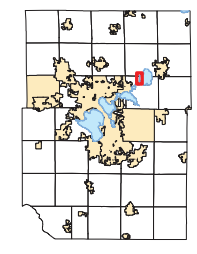
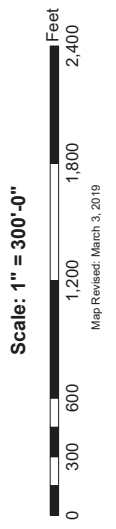


EXHIBIT B: PROJECT AREA



- Legend**
- █ County Wildlife Land
 - █ County Park Land
 - █ County Resource Area
 - Proposed Lower Yahara Trail: Phase 2
 - Lower Yahara River Trail: Future Phase
 - Proposed Bike/Pedestrian Bridge
 - ★

