

Final Plat - Conservancy Bend

City of Middleton

Plat consists of 20 lots, 1 outlots, 1.94 acres.

Parks - None shown.

Parkways - None shown.

Expressways - N/A

Major Highways - Adjacent to Parmenter St. and Hwy 12 to the west.

Airports - Dane County Regional

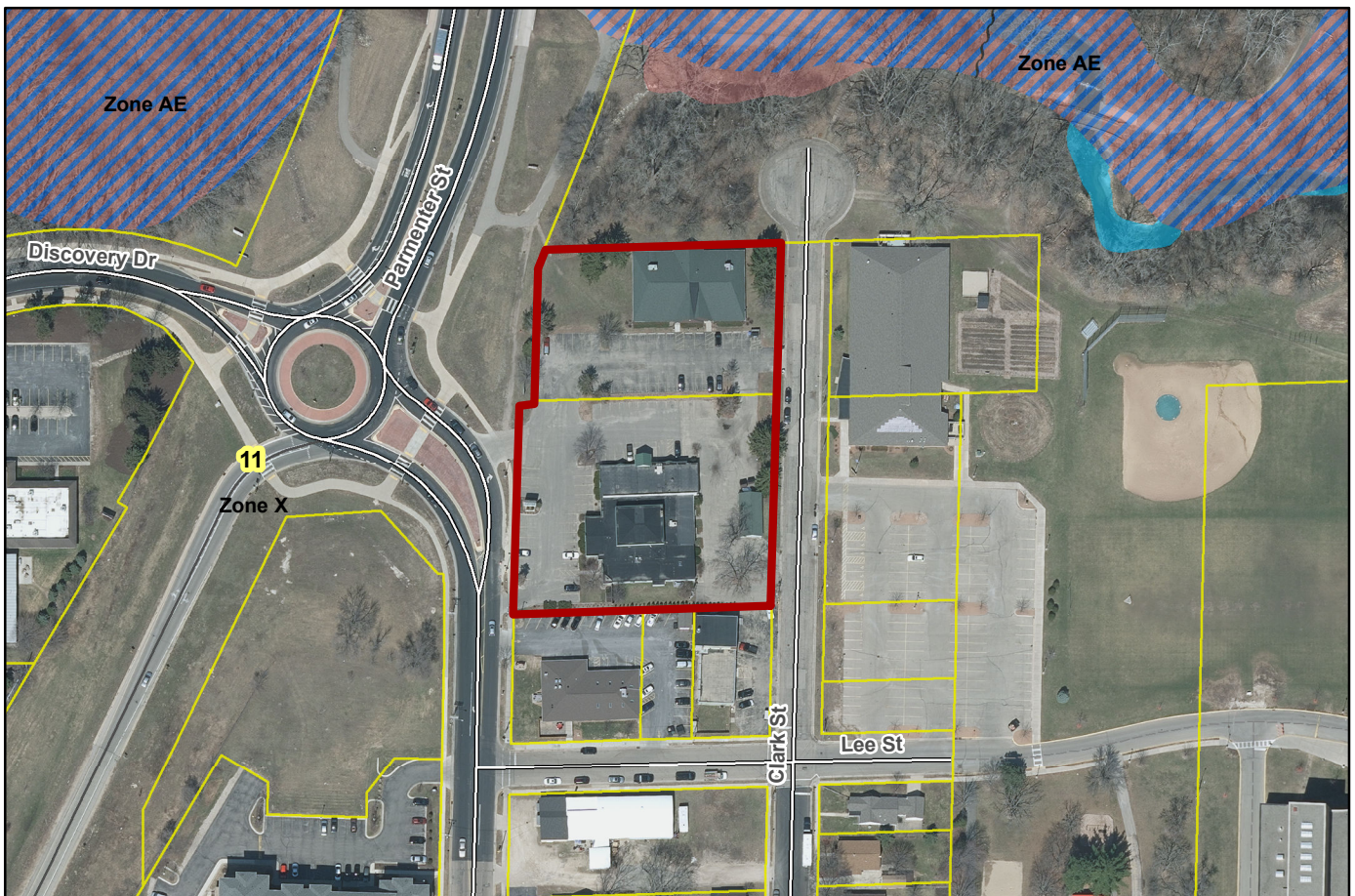
Drainage Channels - None shown.

Schools - established

Other Development - A re-division of lots 1 and 2 of CSM #3799.

Stormwater treatment will be handled on-site with a rain garden in the SE corner of the site and large CMP underground detention chambers beneath the parking lot, in accordance with DNR and City of Middleton requirements. Runoff will be conveyed to these treatment devices via collection in surface inlets and/or direct discharge from roof leads. No easements will be needed for stormwater control.

Plats of subdivisions located in all other incorporated municipalities shall be submitted to the committee, as provided by section 236.12(2)(b) of the Wis. Stats., for the purpose of determining whether the committee has any objection to the plat. The basis for any objection to any such plat shall be that the plat conflicts with parks, parkways, expressways, major highways, airports, drainage channels, schools or other planned public developments.



Motion to certify with no objections: _____, Second: _____ Vote: _____