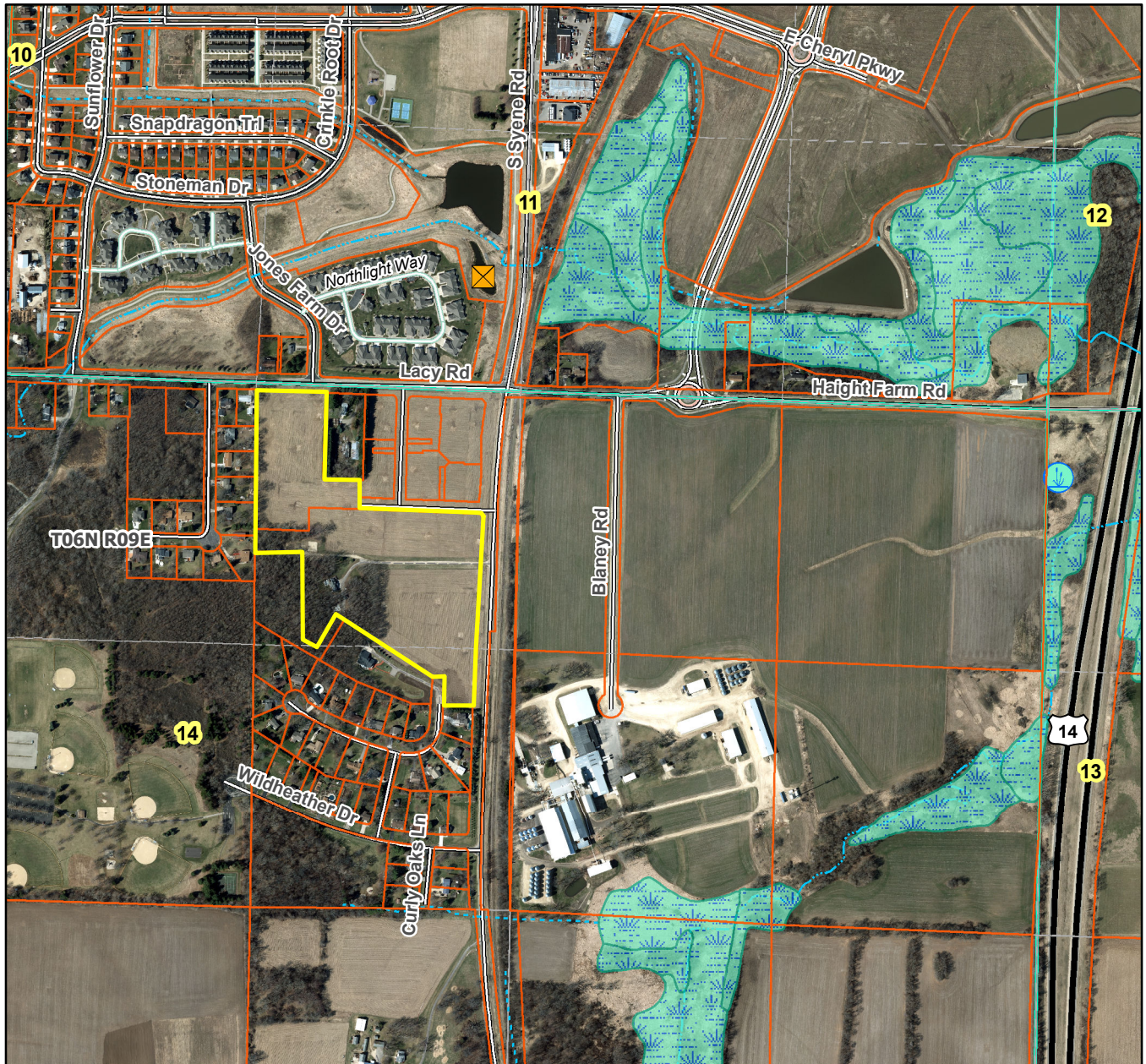


# First Addition to North Park Fitchburg City of Fitchburg, Section 14



Plat consists of 6 lots, 23 acres.

Parks – OL 8 and 11 are dedicated to the public for civil space purposes.

Parkways – N/A

Expressways – N/A

Major Highways – Hwy 14 to the east.

Airports – Dane County Regional Airport (11 mi)

Drainage Channels – Drainage arrows indicate the direction of surface drainage at individual property lines.

Schools – Established.