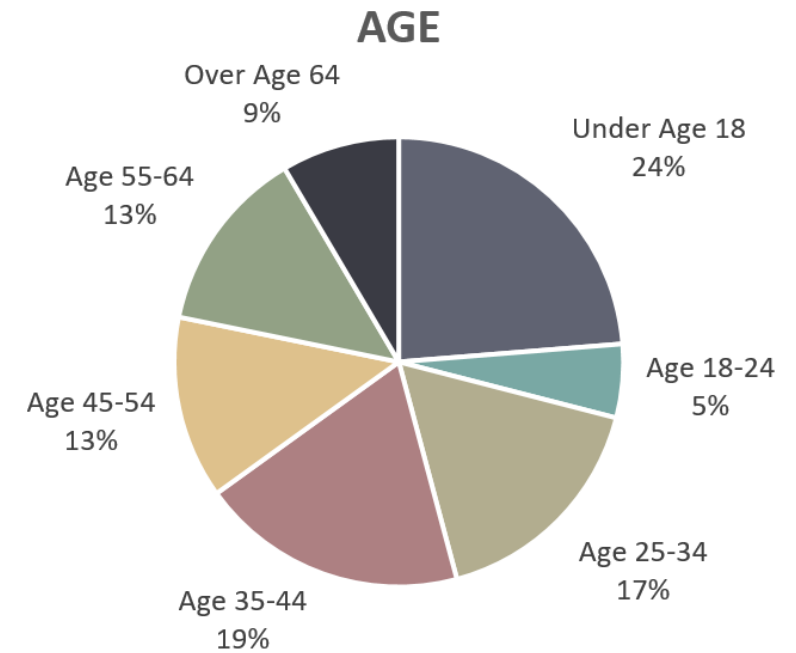
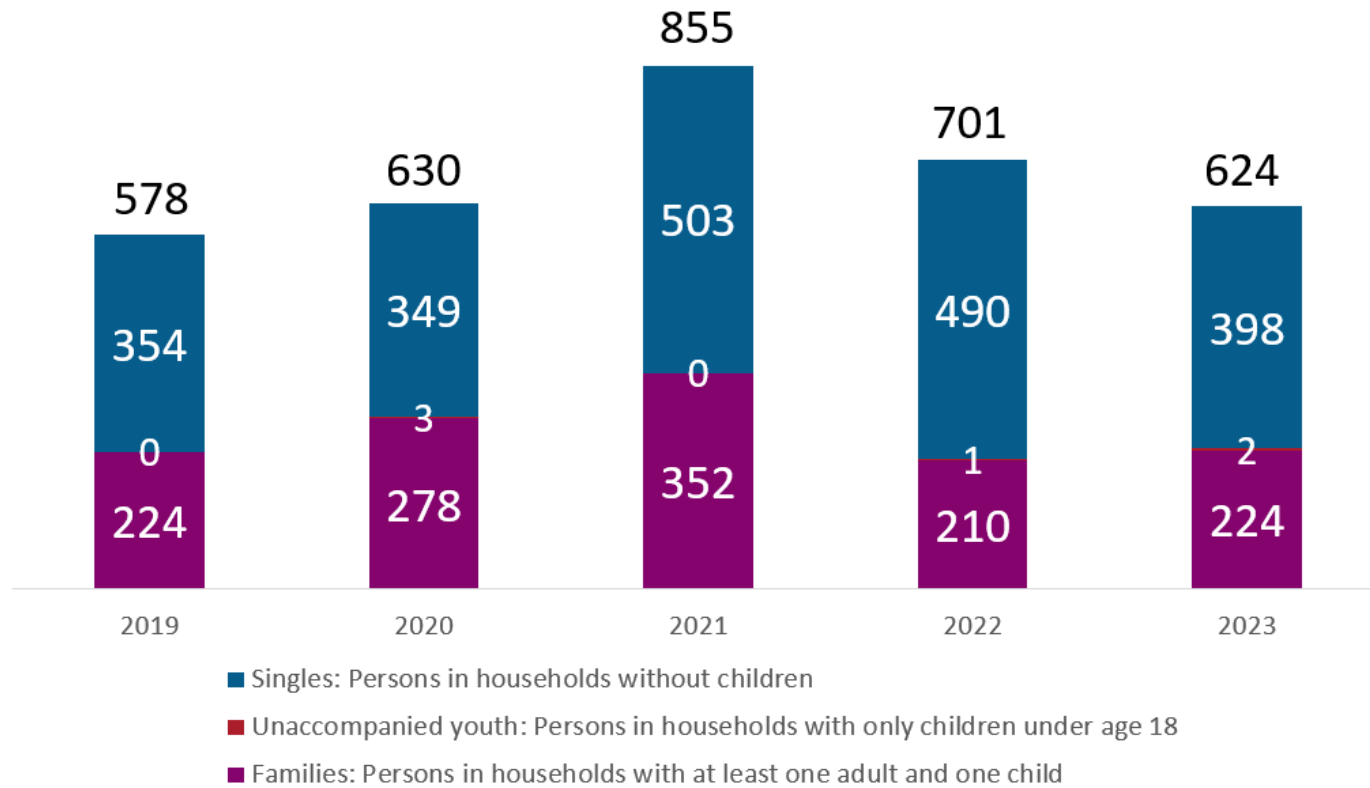


# Aging and Homelessness

Melissa Mennig, DCDHS, HAA Division

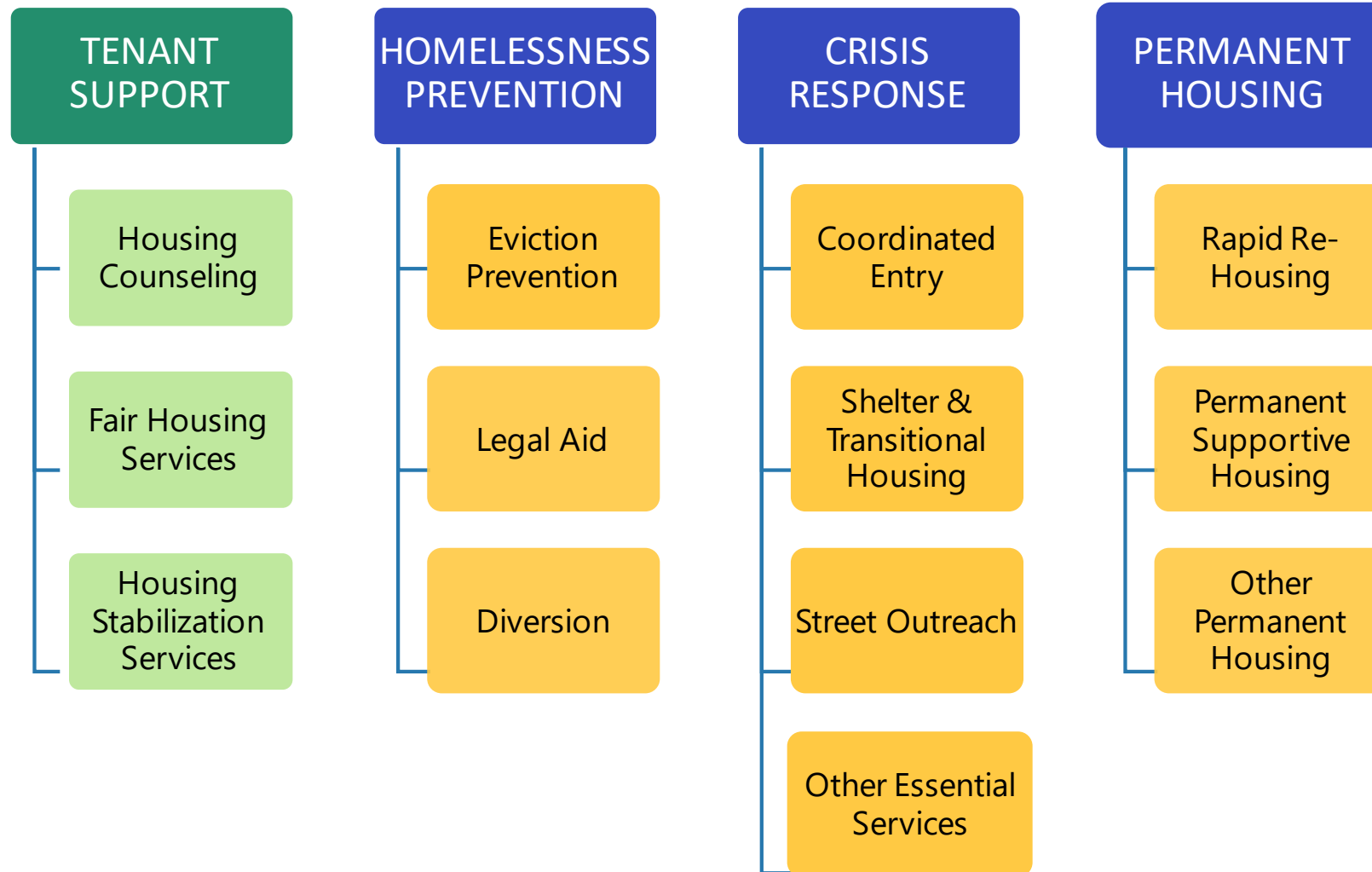
Sarah Lim, City of Madison, Community Development Division

# Homelessness in Madison/Dane County on a Single Night in January



2023 January Point in Time Count

# Dane County Homeless Services System



# Aging and Homelessness: National Trend

Rising numbers of seniors experiencing homelessness

- Limited affordable housing
- Increasing Healthcare Costs: prescription and long-term care costs
- Fixed incomes insufficient: Social Security or pensions
- Increased poverty rate (10.3%)

# Older Population Data



## Nationally

- Fastest growing group of homeless (55+)
  - Jeff Olivet, executive director of the U.S. Interagency Council on Homelessness. “Seniors over the age of 55 are likely the fastest-growing group of people experiencing homelessness ... and for many of them, it is first-time homelessness.”
- 23% of America’s homeless population up from 16% in 2007
- Nearly 1 in 5 people in the U.S. without a permanent place to live are 55+
- By 2034 those 65 and older will outnumber children nationally according to Census.

## Locally

- 2022
  - 467 individuals were 55+ in Emergency Shelter (19%)
  - 207 of those on a fixed income (SSI/SSDI)
- 2023 (First 6 months)
  - 313 individuals were 55+ in Emergency Shelter (19%)
  - 141 of those on a fixed income (SSI/SSDI)



# Challenges identified by Homeless Services for the Older Population

- Transportation
- Food insecurity
- Equipment or medication needs
- Higher level of needs that housing programs/shelters can support.
  - High or complex health needs
  - Difficulty with ADLs
  - AODA
  - Memory issues
  - MCO care coordination could be strengthened
  - Property managers are playing case managers for elder population. Could we put support services in these communities?
  - CNA's or first aid specialist needed in shelters
  - Discharged from hospital without having supports

# Challenges identified by Homeless Services for the Older Population Continued(Same as above)

- Training needed specific to this population
  - Resources and how to access those services
  - Supports to connect people to SSI/SSDI, annual reviews, how to help people stay on benefits. Overpayments. Understanding benefits.
- Housing Navigation-
  - Senior housing assisted living, housing shortage.
  - Hard time re-entering job market
  - Rehab facilities, assisted living, screening barriers are preventing people from living there.
- Social anxiety after COVID- reluctance to meet with case managers due to health conditions

# What are potential solutions? What items should be shared with those working with the Aging Population, other providers, elected officials?

- Shelter
  - Specific shelters needed for this population
  - First aid specialist in shelters, or CAN
- Housing
  - On-site support at 55+ housing properties.
  - Reentry senior housing. assisted living and transitional living in accessible sites.
  - Affordable housing initiatives
  - Giving residents the opportunity to talk to management (town halls) and have resources come to provide information.
  - Targeted housing programs that are affordable and also consider the health needs.
- Support Services
  - Aging and Disability Resource Center come to the Homeless Services Consortium meeting to educate on available services.
  - Managed Care Organizations- teaming up with social worker, challenges are client not keeping appointment.
  - Prevention funding (medication assistance, Meals on Wheels)
  - Targeted outreach programs to help older adults regain stable housing and connect to social supports.
- Peer Support
  - Lived Experience Council- more funding to provide engagement to this population and partner with agencies.
  - Peer led support group for individuals who have hoarding disorder and support services.
  - Have someone with lived experience 55+ talk about their perspective or challenges

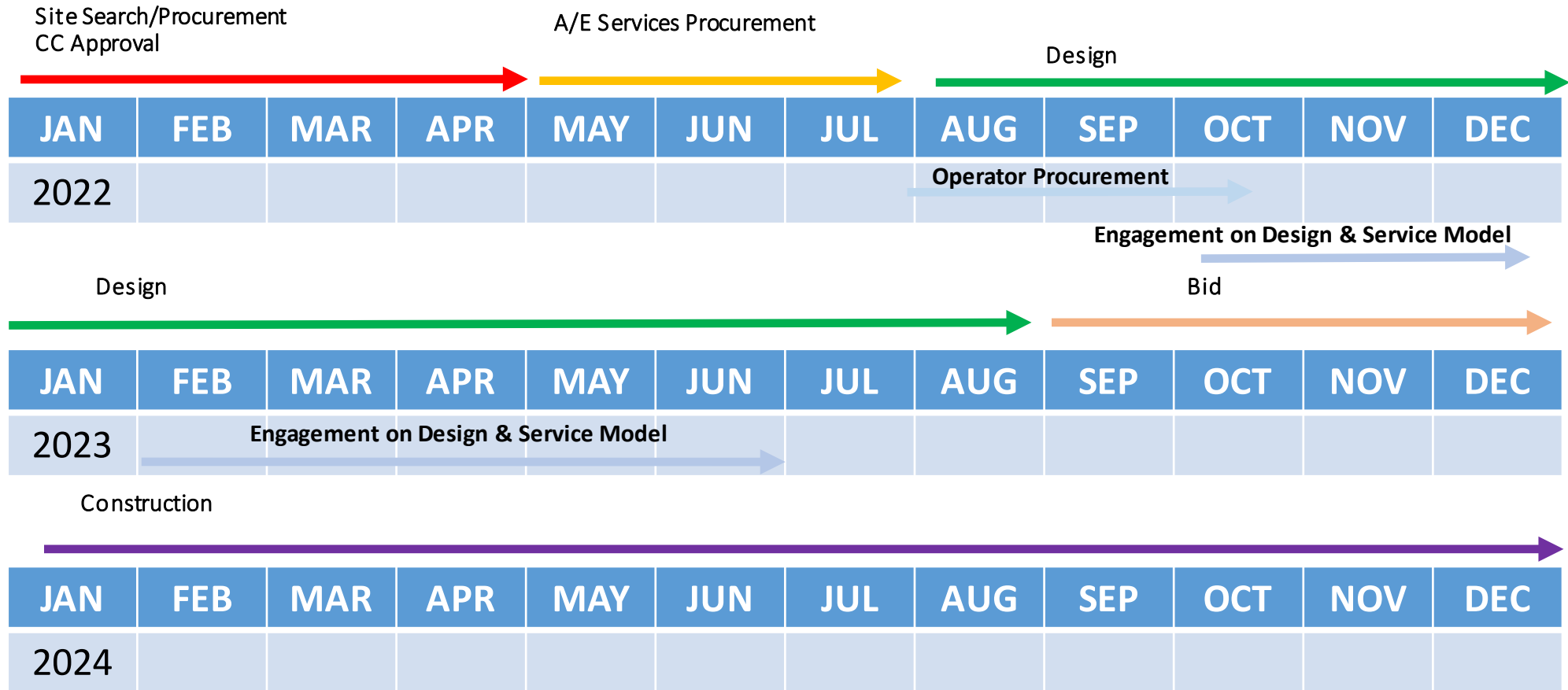


# New Men's Shelter Development Update: 1904 Bartillon Drive



# TENTATIVE

## 1904 Bartillon Project Schedule



Q1 2025 – TENTATIVE CONSTRUCTION COMPLETION

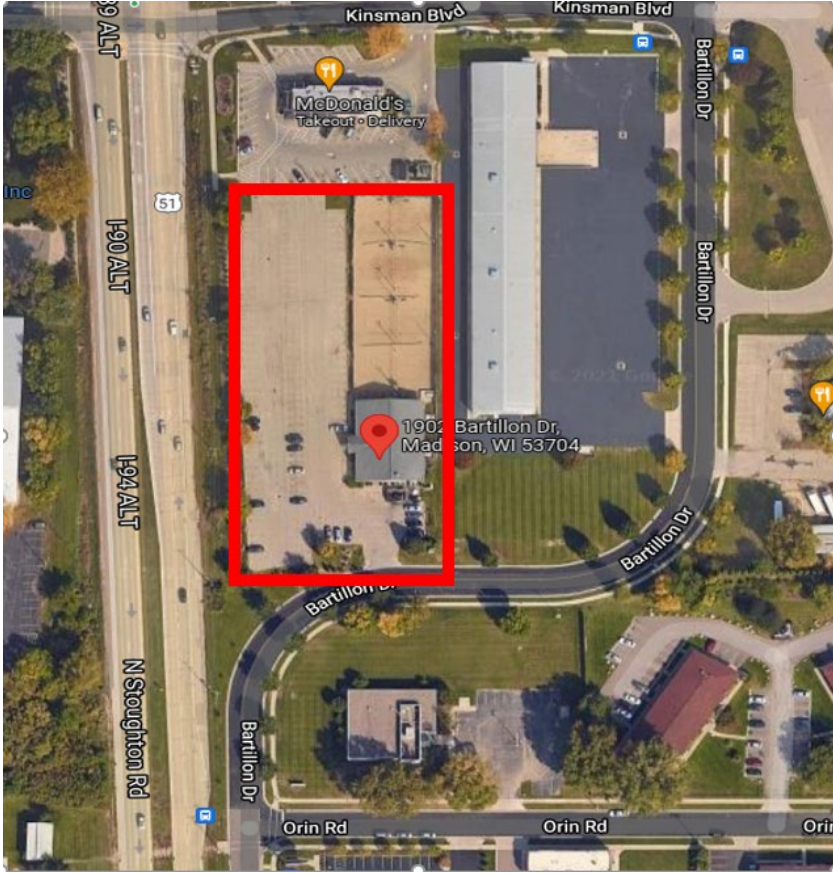
# Summary of Recommendations from Trauma Informed Design Interviews

- Desire to have 24/7 Shelter
- Desire to serve couples
- Prioritization of housing services (i.e. case management, housing navigation)
- Smaller sleeping areas
- Security measures
- Onsite health care and behavioral health services
- Flexible, multiuse spaces
- Accessibility, consideration of mobility needs
- Adequate bathroom facilities
- Adequate place for sleeping and dining

# Current Partners

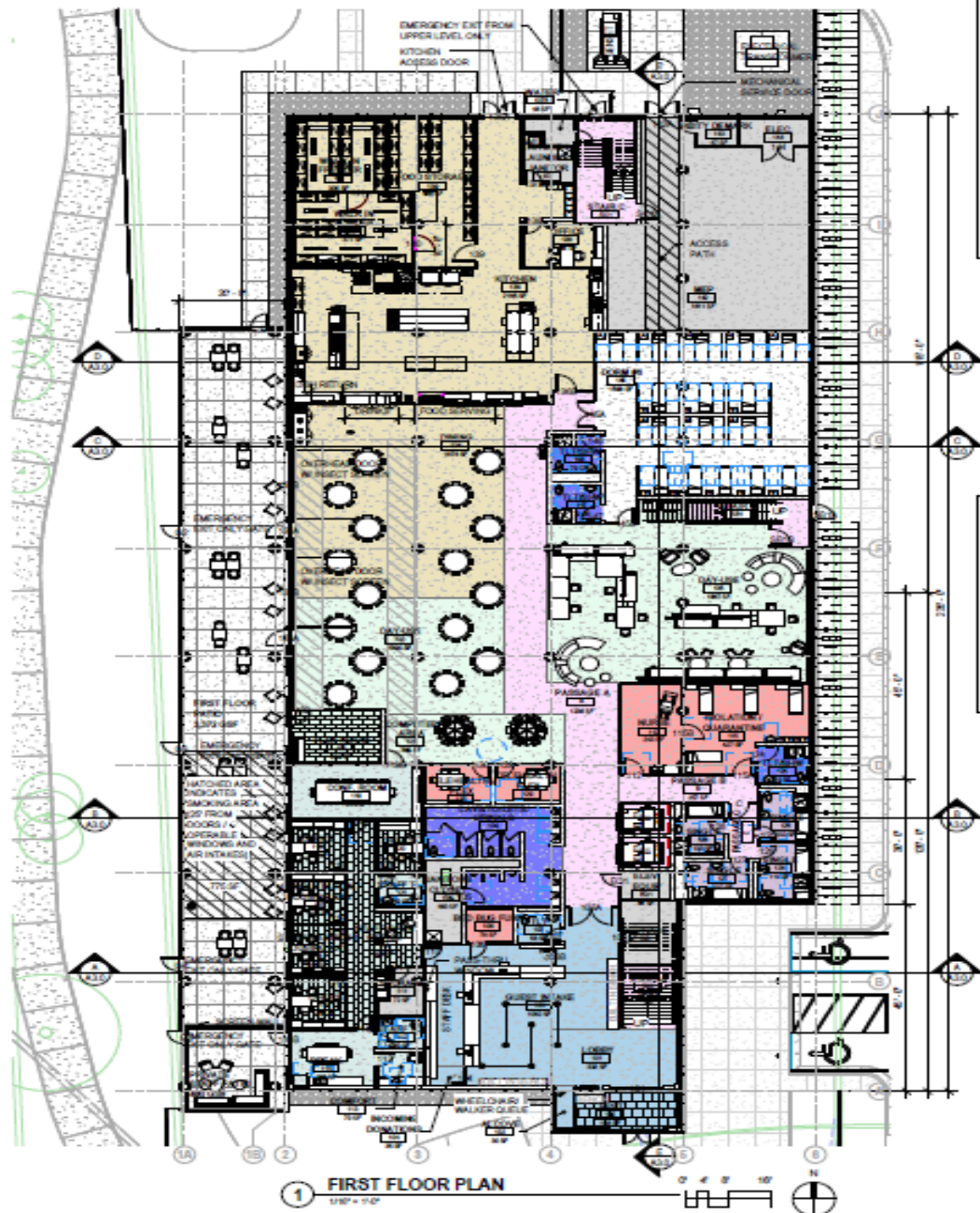
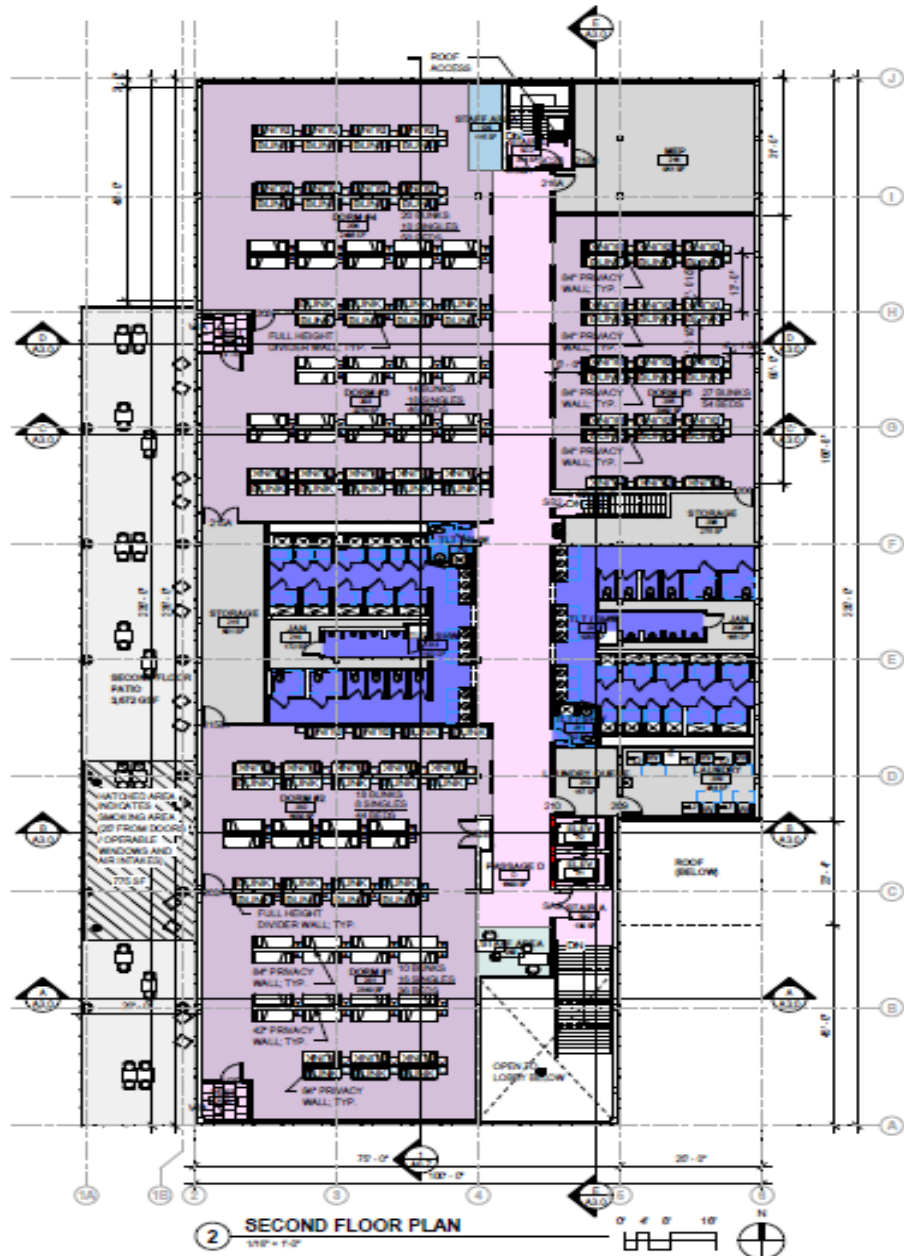
- Porchlight, Inc
- Nurse Disrupted, Inc
- Madison Street Medicine
- Kabba Recovery Services
- Catalyst for Change
- The Beacon
- City Engineering
- City Community Development Division
- Dane County Housing Access & Affordability
- Dane County Human Services
- Homeless Services Board of Directors Liaison
- Dimension IV Madison Design Group

# Design Considerations



- Facility to serve up to 250 guests
  - 5 separate sleeping areas including a dorm for people with mobility issues vs. single congregate space
  - Limited use of bunk beds
  - Storage space
  - Isolation and quarantine space
  - Designed for 24/7 shelter, depending on operation budget
- Commercial kitchen
  - Bring food service in house vs catering
- Flexible space for daytime use
- Capital Budget \$24 million: City, County and Federal Funds





- RECOMMENDATIONS:**
- D. VERIFY SIZE AND LOCATIONS OF ALL MECHANICAL OPENINGS. GENERAL CONTRACTOR TO PAINT AND SEAL LOWER PERIMETER TYPICAL.
  - E. GENERAL CONTRACTOR TO PROVIDE CONCRETE EQUIPMENT PROGRESS AS REQUIRED FOR MECHANICAL/ELECTRICAL EQUIPMENT. VERIFY SIZE/POSITION/LOCATION WITH PLUMBING/MECHANICAL/ELECTRICAL.
  - F. GENERAL CONTRACTOR TO INSTALL FORM FILLER AT ALL MASONRY WALL CONTROL JOINTS AND SEAL BOTH SIDES (WALL REINFORCING TO DISCONTINUE AT JOINTS).
  - G. GENERAL CONTRACTOR TO PROVIDE WOOD BLOCKING BETWEEN METAL STUDS AS REQUIRED FOR CASWORK/INDOOR/TOILET ACCESSORIES ETC. MOUNTING.
  - H. REFER TO EXTERIOR ELEVATIONS FOR EXTERIOR WALL CONTROL JOINTS.
  - I. VERIFY ALL ACTUAL CHASE DIMENSIONS WITH HVAC CONTRACTOR.
  - J. ADA CLEARANCE CIRCLES AND BOWS SHOWN ON PLAN ARE FOR INFORMATION PURPOSES ONLY.
  - K. DIMENSIONS ARE FROM FACE OF STUD (OR ONLY) TO FACE OF STUD (OR ONLY) UNLESS NOTED OTHERWISE.

**LEGEND**

	B.O.H UTILITIES AND STORAGE		NUTRITION
	ORILLATION		OFFICE
	DAY USE		SHELTER
	HEALTH		SLEEPING
	HYGIENE		

BED SCHEDULE		
TYPE	QUANTITY	BEDS
<b>DORM #1</b>		
Bunk	10	30
Single	16	16
<b>DORM #2</b>		
Bunk	18	36
Single	8	8
<b>DORM #3</b>		
Bunk	14	28
Single	18	18
<b>DORM #4</b>		
Bunk	20	40
Single	10	10
<b>DORM #5</b>		
Bunk	27	54
<b>DORM #6</b>		
Single	16	16
<b>ISOLATION / QUARANTINE</b>		
Single	4	4
<b>SINGLE</b>		
Single	4	4
		254

# More Information

- Project Website:
  - [www.cityofmadison.com/engineering/projects/bartillon-shelter](http://www.cityofmadison.com/engineering/projects/bartillon-shelter)