

Expanding Age Friendly Care

A two-year collaboration between UW Hospital and the Center for Aging Research and Education at the UW-Madison School of Nursing

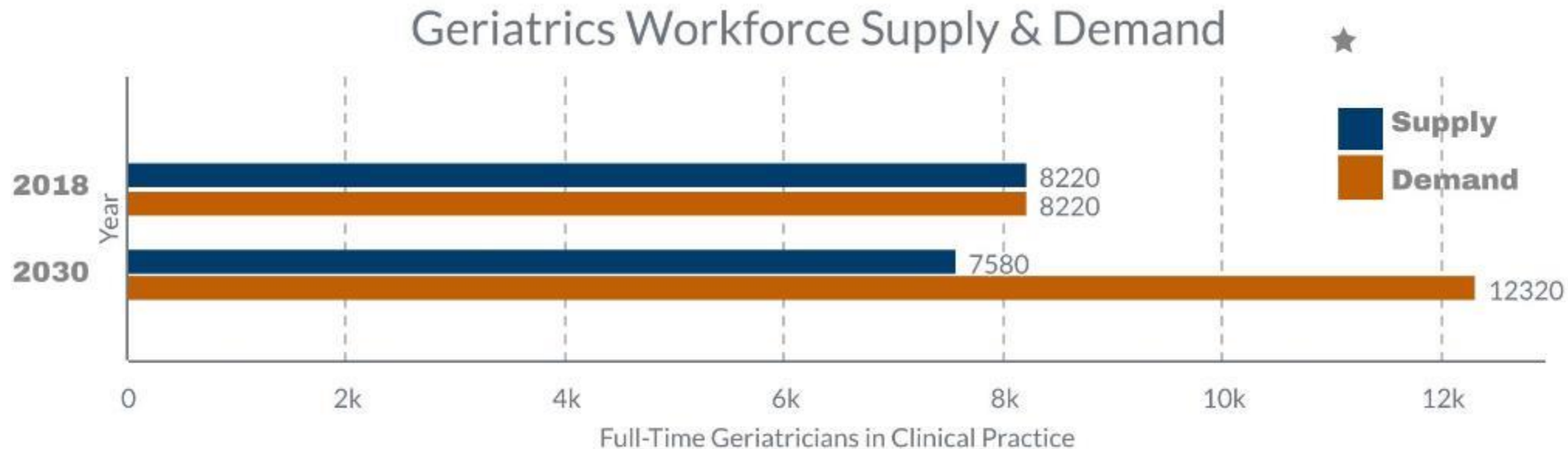


Age Friendly Health Systems

- Led by John A Hartford Foundation and Institute for Healthcare Improvement
- Disconnect between patient population and provider training

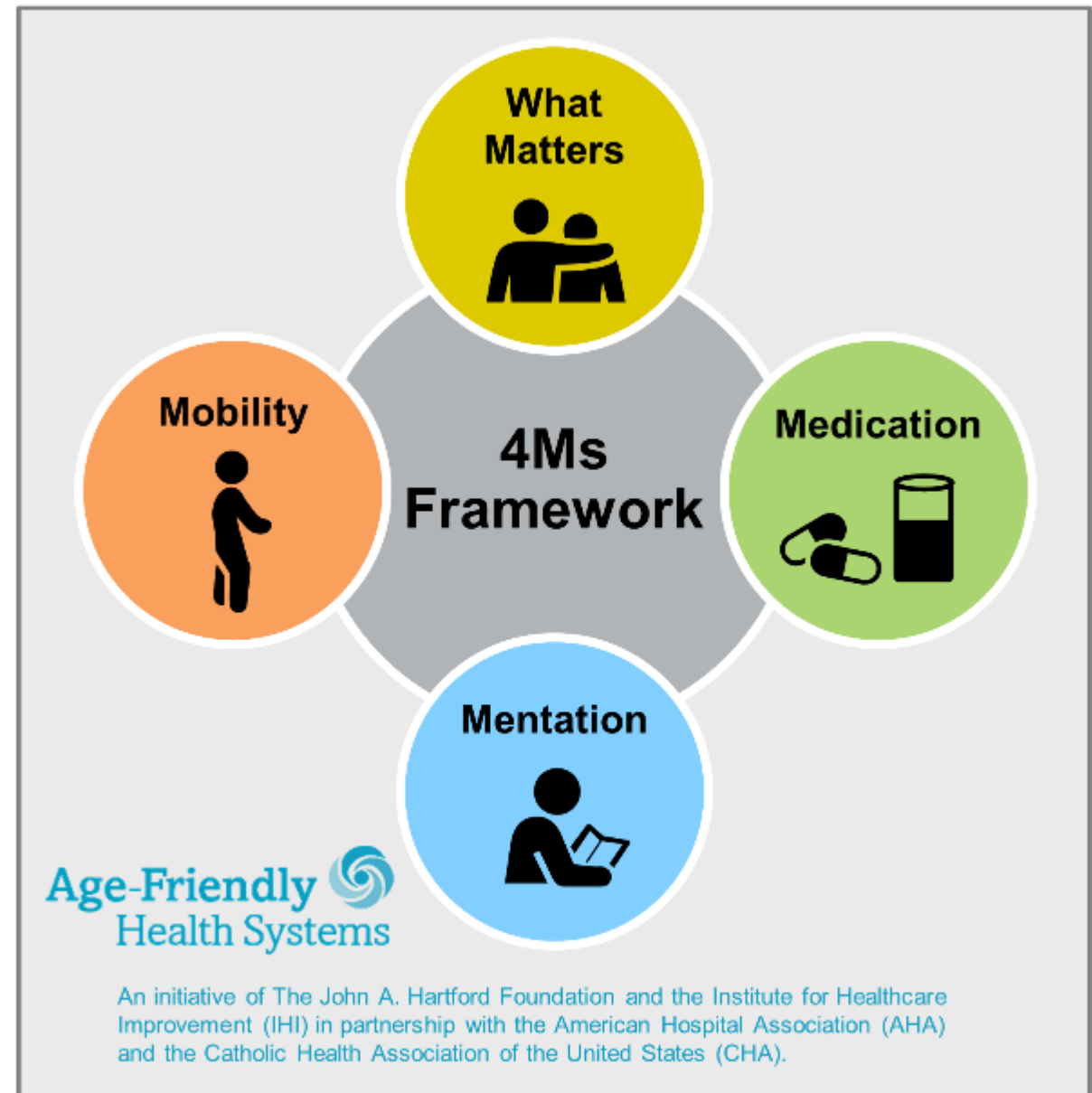
50%

INCREASE
in demand for
geriatricians, ★
2018-2030



The 4Ms framework

- Elements of quality care
- Evidence based
- Cross disciplinary
- Across settings
 - Ambulatory / primary care
 - Hospital
 - Post-acute and long-term care



For related work, this graphic may be used in its entirety without requesting permission.
Graphic files and guidance at ihi.org/AgeFriendly

Collaboration: UW Hospital

- Add “Age Friendly Partner” positions (Nursing students)
- Identify and provide or develop needed resources
 - Equipment supporting mobility
 - Activity kits for patients living with dementia
 - Educational materials for staff
 - Informational materials for patients and family
 - Toolkit to facilitate spread to other units

Collaboration: School of Nursing

- Prepare clinical instructors to teach 4Ms
- Adapt educational materials for undergraduate students
- Engage graduate students in project evaluation and dissemination

Expanding statewide

Wisconsin
Geriatric
Education
Center director
Stacy Barnes

stacy.barnes@marquette.edu

414-288-
3709

