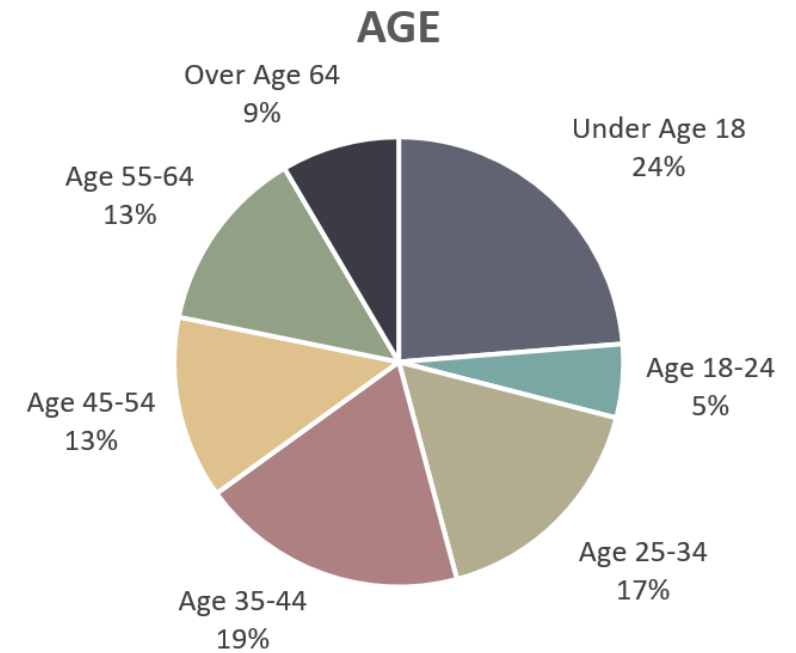
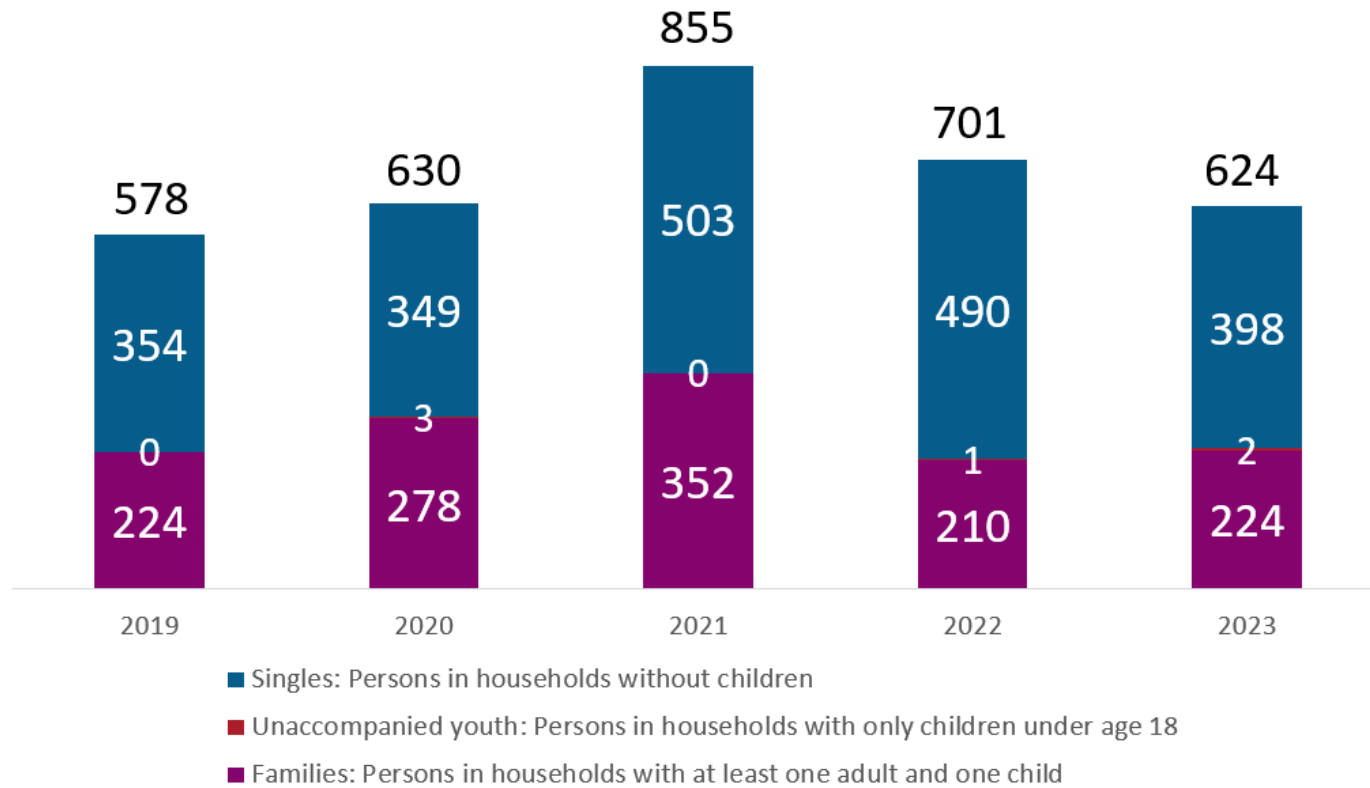


Aging and Homelessness

Melissa Mennig, DCDHS, HAA Division

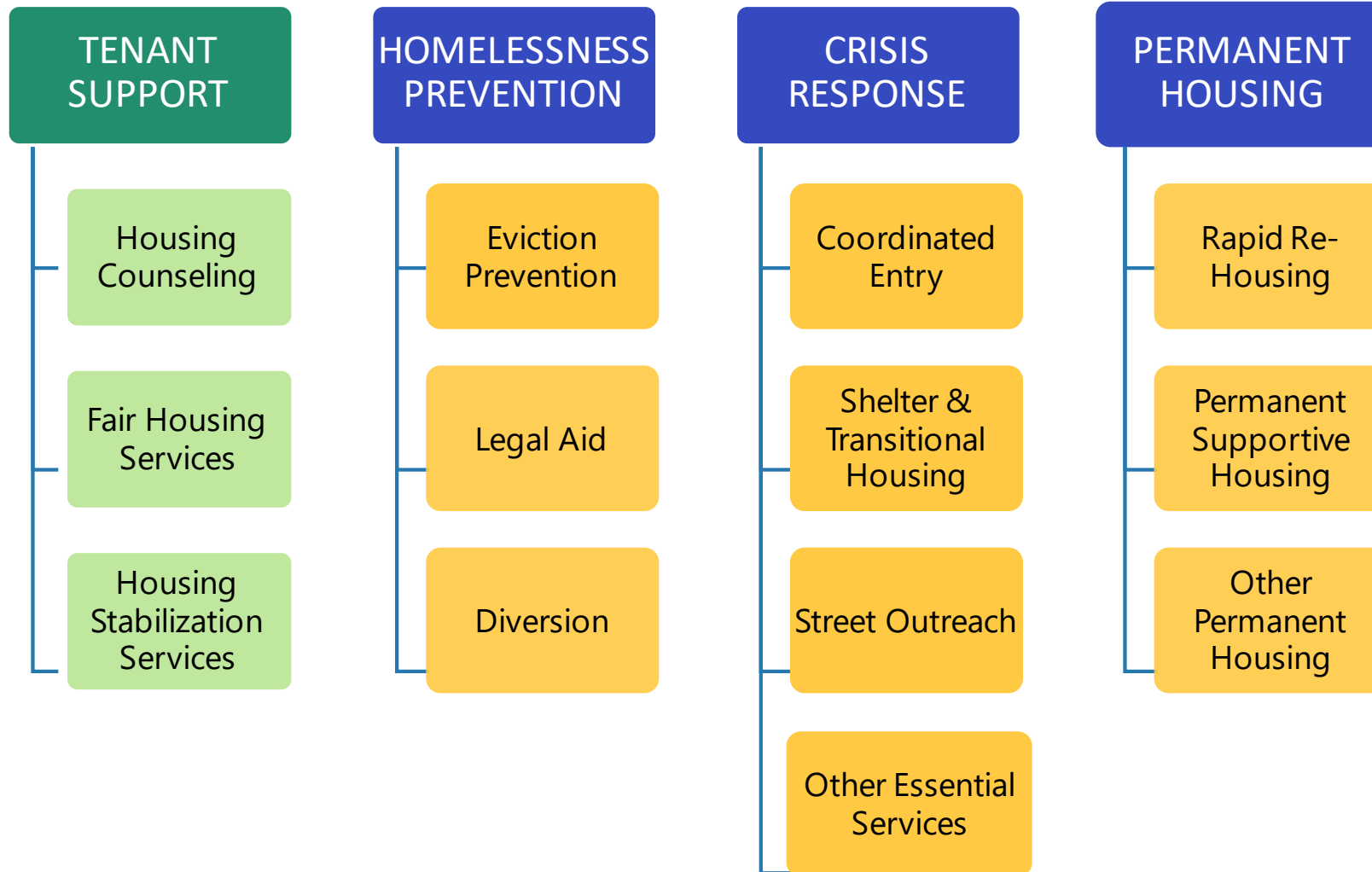
Sarah Lim, City of Madison, Community Development Division

Homelessness in Madison/Dane County on a Single Night in January



2023 January Point in Time Count

Dane County Homeless Services System



Aging and Homelessness: National Trend

Rising numbers of seniors experiencing homelessness

- Limited affordable housing
- Increasing Healthcare Costs: prescription and long-term care costs
- Fixed incomes insufficient: Social Security or pensions
- Increased poverty rate (10.3%)

Older Population Data



Nationally

- Fastest growing group of homeless (55+)
 - Jeff Olivet, executive director of the U.S. Interagency Council on Homelessness. “Seniors over the age of 55 are likely the fastest-growing group of people experiencing homelessness ... and for many of them, it is first-time homelessness.”
- 23% of America’s homeless population up from 16% in 2007
- Nearly 1 in 5 people in the U.S. without a permanent place to live are 55+
- By 2034 those 65 and older will outnumber children nationally according to Census.

Locally

- 2022
 - 467 individuals were 55+ in Emergency Shelter (19%)
 - 207 of those on a fixed income (SSI/SSDI)
- 2023 (First 6 months)
 - 313 individuals were 55+ in Emergency Shelter (19%)
 - 141 of those on a fixed income (SSI/SSDI)



Challenges identified by Homeless Services for the Older Population

- Transportation
- Food insecurity
- Equipment or medication needs
- Higher level of needs that housing programs/shelters can support.
 - High or complex health needs
 - Difficulty with ADLs
 - AODA
 - Memory issues
 - MCO care coordination could be strengthened
 - Property managers are playing case managers for elder population. Could we put support services in these communities?
 - CNA's or first aid specialist needed in shelters
 - Discharged from hospital without having supports

Challenges identified by Homeless Services for the Older Population Continued(Same as above)

- Training needed specific to this population
 - Resources and how to access those services
 - Supports to connect people to SSI/SSDI, annual reviews, how to help people stay on benefits. Overpayments. Understanding benefits.
- Housing Navigation-
 - Senior housing assisted living, housing shortage.
 - Hard time re-entering job market
 - Rehab facilities, assisted living, screening barriers are preventing people from living there.
- Social anxiety after COVID- reluctance to meet with case managers due to health conditions

What are potential solutions? What items should be shared with those working with the Aging Population, other providers, elected officials?

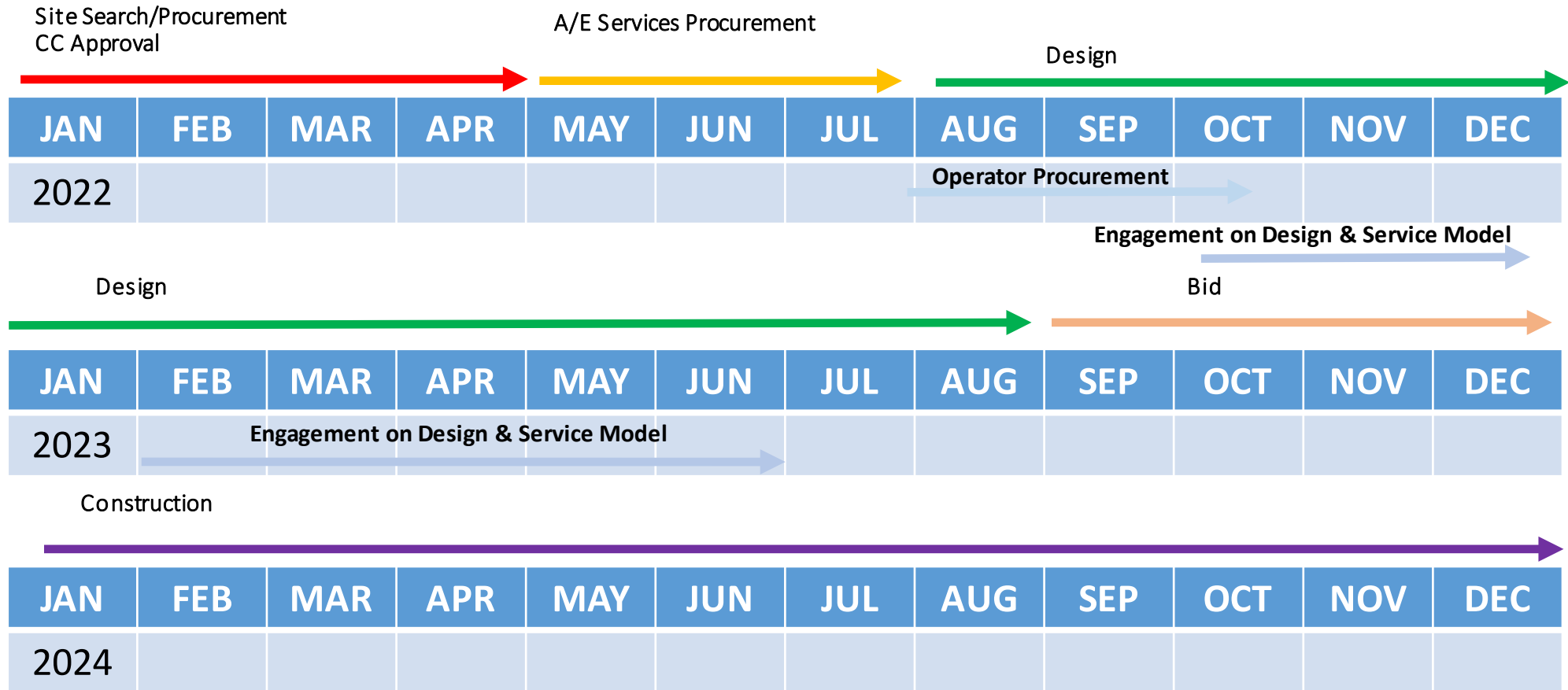
- Shelter
 - Specific shelters needed for this population
 - First aid specialist in shelters, or CAN
- Housing
 - On-site support at 55+ housing properties.
 - Reentry senior housing. assisted living and transitional living in accessible sites.
 - Affordable housing initiatives
 - Giving residents the opportunity to talk to management (town halls) and have resources come to provide information.
 - Targeted housing programs that are affordable and also consider the health needs.
- Support Services
 - Aging and Disability Resource Center come to the Homeless Services Consortium meeting to educate on available services.
 - Managed Care Organizations- teaming up with social worker, challenges are client not keeping appointment.
 - Prevention funding (medication assistance, Meals on Wheels)
 - Targeted outreach programs to help older adults regain stable housing and connect to social supports.
- Peer Support
 - Lived Experience Council- more funding to provide engagement to this population and partner with agencies.
 - Peer led support group for individuals who have hoarding disorder and support services.
 - Have someone with lived experience 55+ talk about their perspective or challenges

New Men's Shelter Development Update: 1904 Bartillon Drive



TENTATIVE

1904 Bartillon Project Schedule



Q1 2025 – TENTATIVE CONSTRUCTION COMPLETION

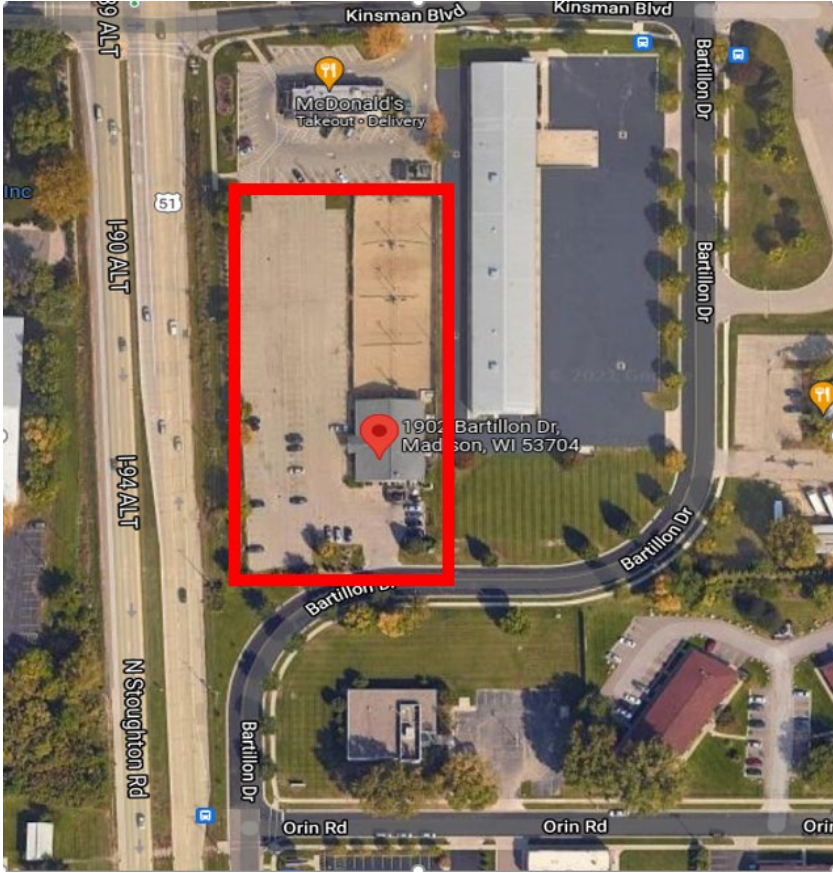
Summary of Recommendations from Trauma Informed Design Interviews

- Desire to have 24/7 Shelter
- Desire to serve couples
- Prioritization of housing services (i.e. case management, housing navigation)
- Smaller sleeping areas
- Security measures
- Onsite health care and behavioral health services
- Flexible, multiuse spaces
- Accessibility, consideration of mobility needs
- Adequate bathroom facilities
- Adequate place for sleeping and dining

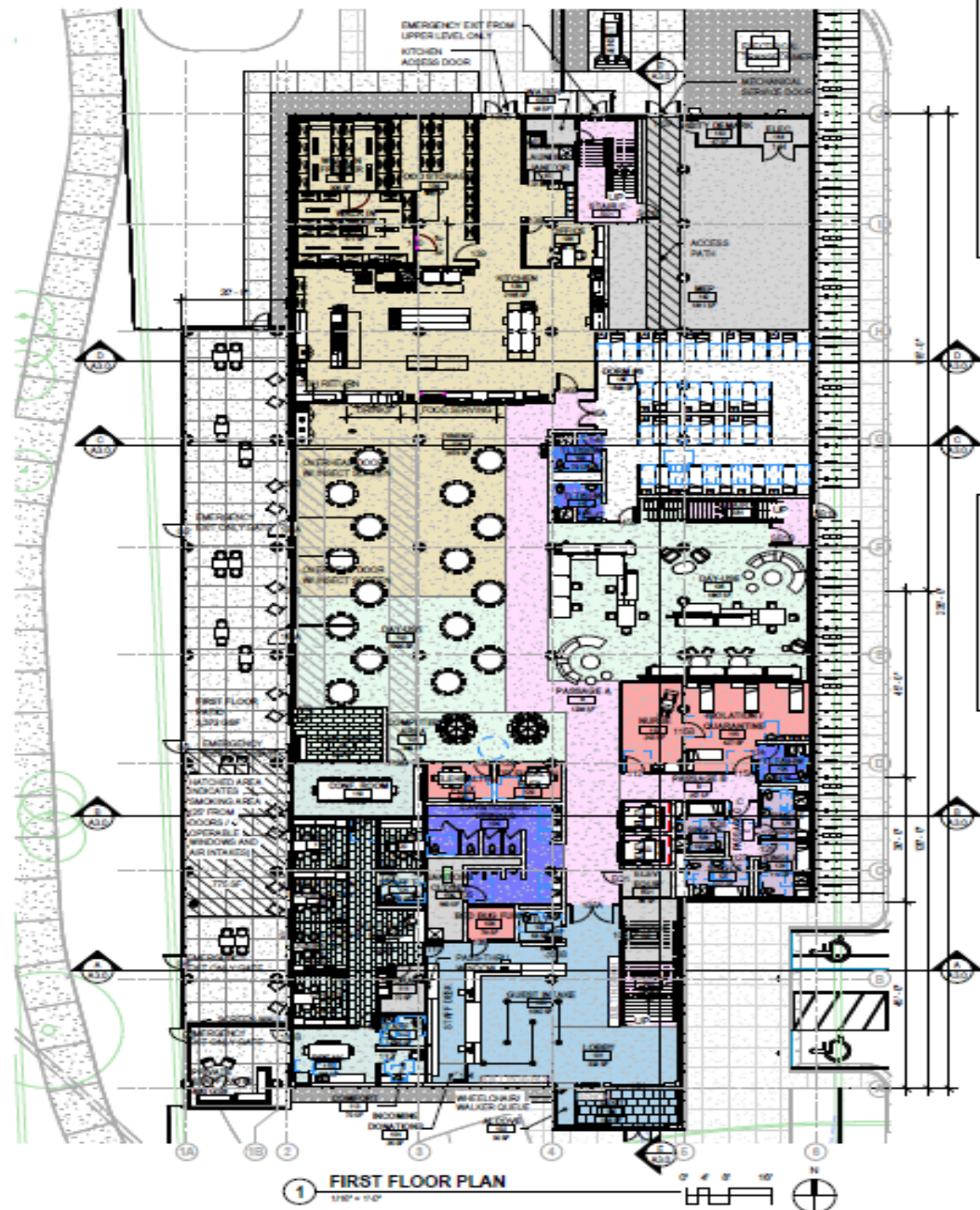
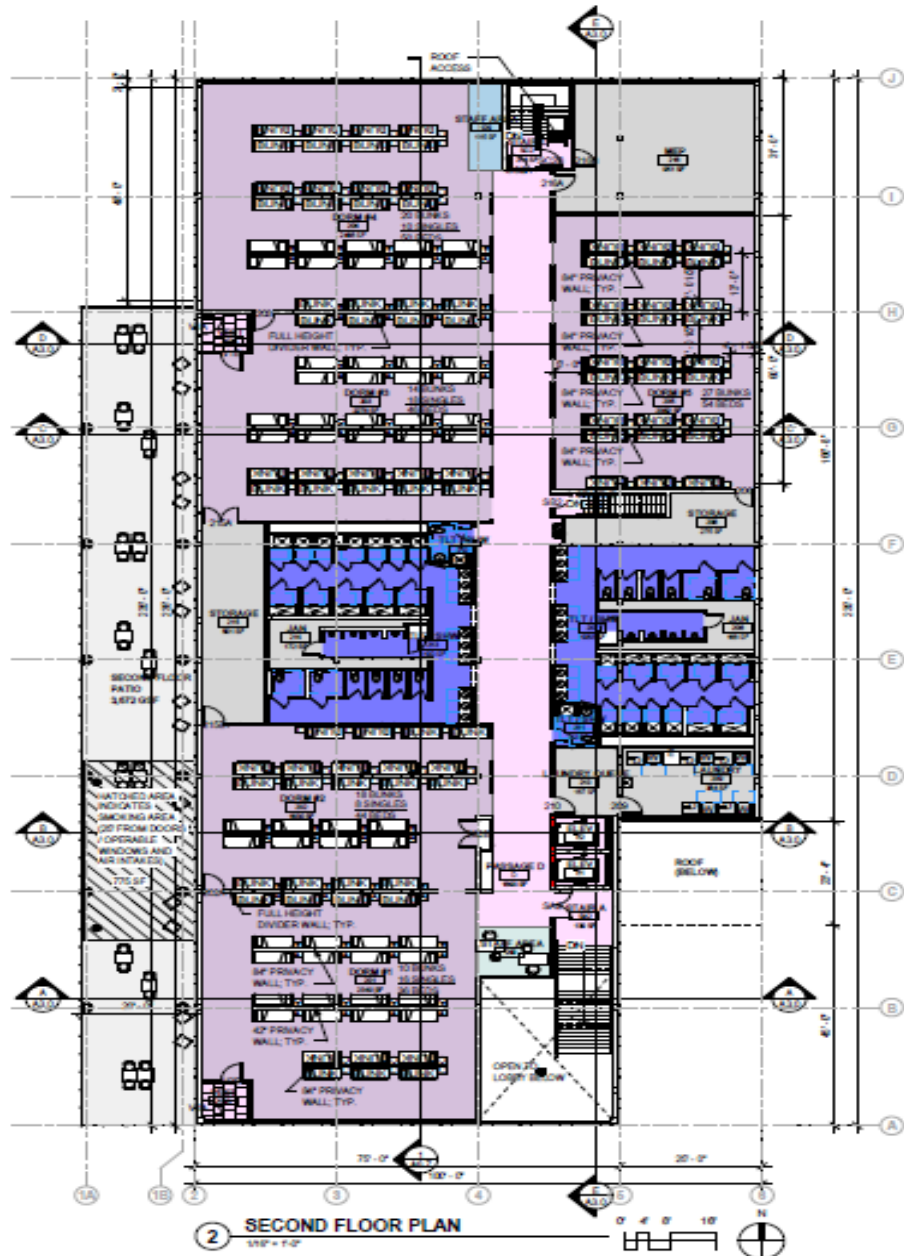
Current Partners

- Porchlight, Inc
- Nurse Disrupted, Inc
- Madison Street Medicine
- Kabba Recovery Services
- Catalyst for Change
- The Beacon
- City Engineering
- City Community Development Division
- Dane County Housing Access & Affordability
- Dane County Human Services
- Homeless Services Board of Directors Liaison
- Dimension IV Madison Design Group

Design Considerations



- Facility to serve up to 250 guests
 - 5 separate sleeping areas including a dorm for people with mobility issues vs. single congregate space
 - Limited use of bunk beds
 - Storage space
 - Isolation and quarantine space
 - Designed for 24/7 shelter, depending on operation budget
- Commercial kitchen
 - Bring food service in house vs catering
- Flexible space for daytime use
- Capital Budget \$24 million: City, County and Federal Funds



- RECOMMENDATIONS:**
- VERIFY SIZE AND LOCATIONS OF ALL MECHANICAL OPENINGS. GENERAL CONTRACTOR TO PAINT AND SEAL LOWER PERIMETER TYPICAL.
 - GENERAL CONTRACTOR TO PROVIDE CONCRETE EQUIPMENT PROGRESS AS REQUIRED FOR MECHANICAL/ELECTRICAL EQUIPMENT. VERIFY SIZE/POSITION/LOCATION WITH PLUMBING/MECHANICAL/ELECTRICAL.
 - GENERAL CONTRACTOR TO INSTALL FORM FILLER AT ALL MASONRY WALL CONTROL JOINTS AND SEAL BOTH SIDES (WALL REINFORCING TO DISCONTINUE AT JOINTS).
 - GENERAL CONTRACTOR TO PROVIDE WOOD BLOCKING BETWEEN METAL STUDS AS REQUIRED FOR CASWORK/INDOOR/TOILET ACCESSORIES ETC. MOUNTING.
 - REFER TO EXTERIOR ELEVATIONS FOR EXTERIOR WALL CONTROL JOINTS.
 - VERIFY ALL ACTUAL CHASE DIMENSIONS WITH HVAC CONTRACTOR.
 - ADA CLEARANCE CIRCLES AND BOXES SHOWN ON PLAN ARE FOR INFORMATION PURPOSES ONLY.
 - DIMENSIONS ARE FROM FACE OF STUD (OR ONLY) TO FACE OF STUD (OR ONLY) UNLESS NOTED OTHERWISE.

LEGEND

[Grey Box]	B.O.H UTILITIES AND STORAGE	[Yellow Box]	NUTRITION
[Pink Box]	CIRCULATION	[Light Blue Box]	OFFICE
[Light Green Box]	DAY USE	[Blue Box]	SHELTER
[Red Box]	HEALTH	[Purple Box]	SLEEPING
[Dark Blue Box]	HYGIENE		

BED SCHEDULE		
TYPE	QUANTITY	BEDS
DORM #1		
Bunk	10	30
Single	15	15
DORM #2		
Bunk	15	36
Single	5	5
DORM #3		
Bunk	14	28
Single	15	18
DORM #4		
Bunk	20	40
Single	10	10
DORM #5		
Bunk	27	54
DORM #6		
Single	15	15
ISOLATION / QUARANTINE		
Single	4	4
SINGLE		
Single	4	4
		254

More Information

- Project Website:
 - www.cityofmadison.com/engineering/projects/bartillon-shelter