

SYMBOLS KEY AND ABBREVIATIONS:

DXXX

X

1

1

ROOM NAME

SV

CPT

-8"

DETAIL #

SHEET #

1

AB

DETAIL #

SHEET #

1

AB

DETAIL #

SHEET #

AB

P1

FIRST FLOOR

EL: 100' 0"

914'

914.5'

DOOR NUMBER

WINDOW NUMBER

KEY NOTE

FIRE RATING DESIGNATION

ROOM NAME TAG

FLOOR FINISH TRANSITION

FLOOR HEIGHT TRANSITION

SECTION OR DETAIL TAG
REFERRING TO DETAIL # /
SHEET #.

DETAIL REFERENCE TAG
REFERRING TO DETAIL # /
SHEET #.

INTERIOR ELEVATION REF.
REFERRING TO DETAIL # /
SHEET #.

PARTITION TYPE

SECTION ELEVATION TAG

EXISTING TOPOGRAPHY

PROPOSED NEW
TOPOGRAPHICAL GRADE

PROPOSED NEW
SPOT ELEVATION

GENERAL NOTES:

- DIMENSIONS ARE TO FACE OF WALL OR TO COLUMN CENTERLINE UNLESS NOTED OTHERWISE. VERIFY ALL EXISTING CONDITIONS AND ADJUST WALL DIMENSIONS ACCORDINGLY. CONTACT ARCHITECT WITH ANY DISCREPANCIES.
- CONTRACTOR SHALL NOTIFY ARCHITECT IMMEDIATELY UPON DISCOVERING ANY DISCREPANCIES OR CONFLICTING INFORMATION IN THESE DOCUMENTS. CONTRACTOR SHALL CAREFULLY REVIEW AND COMPARE ALL DRAWINGS DURING THE BIDDING PERIOD AND BEFORE INSTALLATION OF THEIR WORK. ANY INCONSISTENCIES IN THE DRAWINGS SHALL BE REPORTED PROMPTLY TO THE ARCHITECT AND ENGINEER(S) FOR CLARIFICATION.
- DO NOT SCALE DRAWINGS. THE DRAWINGS ARE NOT NECESSARILY TO SCALE – USE GIVEN DIMENSIONS. DIMENSIONS TAKE PRECEDENCE OVER SCALE. CONTRACTOR TO VERIFY ALL DIMENSIONS IN FIELD.
- CONTRACTOR SHALL NOTIFY ARCHITECT AND OWNER IMMEDIATELY UPON DISCOVERING ANY UNANTICIPATED EXISTING SITE CONDITIONS AFFECTING THE EXECUTION OF THESE DOCUMENTS (SUCH AS HAZARDOUS MATERIALS, ETC.).
- CONTRACTOR SHALL ABIDE BY ALL LOCAL, STATE AND FEDERAL CODES AND REGULATIONS GOVERNING THIS PROJECT.
- JOB SITE SHALL BE BROOM SWEEP AND CLEAN AT THE END OF EACH DAY. ALL DEBRIS SHALL BE PICKED UP AND DISPOSED OF PROPERLY INTO APPROVED CONTAINER.
- MAINTAIN DESIGNATED EGRESS ROUTES DURING CONSTRUCTION BY KEEPING CLEAR OF CONSTRUCTION DEBRIS AND CLEARLY MARKING THE PATH OF EGRESS TRAVEL.
- ALL MECHANICAL (HVAC), ELECTRICAL AND PLUMBING ("MEP") DESIGN AND CONSTRUCTION TO BE BY A DESIGN-BUILD DELIVERY METHOD AND ARE SUBSEQUENTLY NOT PART OF THESE DOCUMENTS. IT IS THE MEP CONTRACTOR'S RESPONSIBILITY TO COORDINATE WITH THE GENERAL CONTRACTOR AND WITH THESE DRAWINGS THE FINAL DESIGN, RETROFIT AND INSTALLATION OF THESE SYSTEMS. NOTIFY THE ARCHITECT PRIOR TO MAKING ANY REVISIONS TO THE STRUCTURE OR ARCHITECTURAL FEATURES.
- ELECTRICIAN TO VERIFY NEW LIGHT FIXTURE LAYOUT AND SUBMIT LIGHTING ENERGY CALC'S AS REQUIRED PER CODE.
- HVAC CONTRACTOR SHALL SUBMIT PROPER DESIGN DRAWINGS AS NEEDED FOR PLAN APPROVAL AND BUILDING PERMITS.

PROJECT DATA:

LOCATION:

5291 FELLAND ROAD
TOWN OF BURKE, WISCONSIN

REGULATING MUNICIPALITIES:

TOWN OF BURKE
DANE COUNTY
STATE OF WISCONSIN

BUILDING CODE:

WISCONSIN ADMINISTRATIVE CODE
2009 INTERNATIONAL BUILDING CODE
DANE COUNTY ZONING ORD.

CONSTRUCTION TYPE:

PROPOSED BUILDING:
TYPE "VB", COMBUSTIBLE – UNPROTECTED

OCCUPANCY:

MERCANTILE "M"
ASSEMBLY "A-2"
RESIDENTIAL "R-2"

OCCUPANT LOAD:

MERCANTILE "M" @ 60 SF/OCC.
STORAGE @ 300 SF/OCC
ASSEMBLY @ 7 SF/OCC
KITCHEN @ 200 SF/OCC
RESIDENTIAL @ 200 SF/OCC.

AREA CALCULATIONS:

FIRST FLOOR:
MERCANTILE: 2,665 SF
ASSEMBLY: 1,315 SF
TOTAL: 4,000 GSF

SECOND FLOOR
RESIDENTIAL: 2,958 GSF

THIS IS A NON-SPRINKLERED BUILDING*

2-HR RATED FLOOR ASSEMBLY BETWEEN FIRST AND SECOND FLOORS.
2-HR RATED WALL ASSEMBLY BETWEEN RESIDENTIAL APARTMENTS.

MAX. ALLOWABLE FIRE AREA:
PER IBC TABLE 503 = 7,000 GSF 2 STORIES

EXIT TRAVEL DISTANCE:
NON-SPRINK. BLDG = 200 FT MAX TRAVEL
75' COMMON PATH OF TRAVEL

PLUMBING:
TOILETS REQUIRED: 1 MALE, 1 FEMALE = 2 TOTAL
LAVATORIES REQUIRED: 1 PER SEX = 2 TOTAL

ACCESSIBILITY:
PER IBC CH. 34 AND ANSI A117.1

SHEET INDEX:

| | |
|-------|-----------------------------------|
| CS | COVER SHEET |
| C100 | EXISTING CONDITIONS |
| C101 | DEMOLITION PLAN |
| C102 | CIVIL SITE PLAN |
| C200 | GRADING PLAN |
| C201 | EROSION CONTROL PLAN |
| ES100 | SITE LIGHTING PHOTOMETRIC PLAN |
| ES101 | SITE LIGHTING NIGHT IMAGERY |
| ES102 | SITE FUTURE SCHEDULE |
| L1.0 | SITE LANDSCAPE PLAN |
| A1.0 | ARCHITECTURAL SITE PLAN/ROOF PLAN |
| A2.0 | FIRST/SECOND FLOOR PLAN |
| A3.0 | EXTERIOR ELEVATIONS |

COMMON APPREVIATIONS:

| | | | | | |
|-------|-------------------------|-------|---|-------|-------------------------------|
| AB | ANCHOR BOLT | FDN | FOUNDATION | OC | ON CENTER |
| ACT | ACOUSTICAL CEILING TILE | FIN | FINISH (OR) FINNED | OCEW | ON CENTER EACH WAY |
| AFF | ABOVE FINISH FLOOR | FF | FINISH FLOOR | OD | OUTSIDE DIAMETER |
| AGG | AGGREGATE | F-F | FACE-TO-FACE | OH | OVER HEAD |
| ALUM | ALUMINUM | FLG | FLANGE | OPP | OPPOSITE |
| ALT | ALTERNATE | FTG | FOOTING | PEMB | PRE-ENGINEERED METAL BUILDING |
| ARCH | ARCHITECT/ARCHITECTURAL | FUT | FUTURE | PERIM | PERIMETER |
| | | FV | FIELD VERIFY | PC | PLUMBING CONTRACTOR |
| B-B | BACK-TO-BACK | GA | GAUGE | P/C | PRECAST/PRESTRESSED |
| BLDG | BUILDING | GLV | GALVANIZED | PL | STEEL PLATE DESIGNATION |
| BLK | BLOCK | GC | GENERAL CONTRACTOR | P/T | POST TENSIONED |
| BM | BEAM | GL | GRID LINE | | |
| BOT | BOTTOM | GWB | GYP SUM WALL BOARD | RB | RUBBER BASE |
| BRG | BEARING | GYP | GYP SUM | REINF | REINFORCING |
| BS | BOTH SIDES | | | REQD | REQUIRED |
| | | H | HEIGHT | RTU | ROOF TOP UNIT |
| C | CHANNEL DESIGNATION | HORIZ | HORIZONTAL | SCHD | SCHEDULE |
| CIP | CAST IN PLACE | HP | HIGH POINT | SIM | SIMILAR |
| CJ | CONSTRUCTION JOINT | HR | HOUR | SHF | SHEET |
| CL | CENTER LINE | HT | HEIGHT | SOG | SLAB ON GRADE |
| CLJ | CONTROL JOINT | HVAC | HEATING, VENTILATING & AIR CONDITIONING | SPA | SPACE/SPACES |
| CLR | CLEAR DISTANCE | HW | HARDWOOD | SPEC | SPECIFICATION |
| CMU | CONCRETE MASONRY UNIT | | | SQ | SQUARE |
| COL | COLUMN | ID | INSIDE DIAMETER | STL | STEEL |
| CONC | CONCRETE | INSUL | INSULATION | STR | STRUCTURAL |
| CONV | CONNECTION | INT | INTERIOR | | |
| CONT | CONTINUOUS | JT | JOINT | T | TALL |
| CONTR | CONTRACTOR | KO | KNOCK OUT | THK | THICK |
| CPT | CARPET | L | LENGTH | TO | TOP OF |
| CT | CERAMIC TILE | L | LENGTH | TOC | TOP OF CONCRETE |
| | | L | LENGTH | TOF | TOP OF FLOOR |
| D | DEPTH | L | LENGTH | TOW | TOP OF WALL |
| DB | DESIGN BUILD | L | LENGTH | TL | TOP OF LEDGE ELEVATION |
| DA | DIAMETER | LG | LENGTH/LONG | TP | TOP OF PIER ELEVATION |
| DIM | DIMENSION | LGMP | LENGTH/LONG | TW | TOP OF WALL ELEVATION |
| DN | DOWN | LLH | LONG LEG HORIZ | TYP | TYPICAL |
| DTL | DETAIL | LLV | LONG LEG VERT | | |
| DWG | DRAWING | LP | LOW POINT | UNO | UNLESS NOTED OTHERWISE |
| DWL | DOWEL | LVL | LAMINATED VENEER LUMBER | | |
| | | MANF | MANUFACTURER | VB | VINYL BASE (OR) VAPOR BARRIER |
| EA | EACH | MAX | MAXIMUM | VCT | VINYL COMPOSITION TILE |
| EC | ELECTRICAL CONTRACTOR | MEW | MASONRY BEARING WALL | VERT | VERTICAL |
| EJ | EXPANSION JOINT | MC | MECHANICAL CONTRACTOR | VIF | VERIFY IN FIELD |
| EL | ELEVATION | MEP | MECHANICAL, ELECTRICAL, PLUMBING | VR | VAPOR RETARDER |
| ELEV | ELEVATOR | MIN | MINIMUM | | |
| ENG | ENGINEER | MTL | METAL | W | WIDTH |
| EO | EQUAL | | | W/ | WITH |
| EW | EACH WAY | | | W/O | WITHOUT |
| E-W | EAST-WEST DIRECTION | | | WD | WOOD |
| EXIST | EXISTING | NIC | NOT IN CONTRACT | WF | WIDE FLANGE DESIGNATION |
| EXP | EXPANSION | NOM | NOMINAL | WP | WORKING POINT |
| EXT | EXTERIOR | NTS | NOT TO SCALE | WSW | WOOD STUD BEARING WALL |
| | | N-S | NORTH-SOUTH DIRECTION | WWF | WELDED WIRE FABRIC |

HATCH PATTERNS:

| | |
|--|---|
| | EARTH |
| | BRICK |
| | CONCRETE MASONRY UNIT (CMU) |
| | WOOD FRAMED WALL |
| | CONCRETE |
| | ASPHALT (PLAN) GRANULAR FILL (SECTION) |

SNOW LEOPARD SPIRITS

MIXED-USE REDEVELOPMENT

5291 FELLAND RD., TOWN OF BURKE WISCONSIN

CONDITIONAL USE PERMIT / SITE PLAN REVIEW SUBMITTAL



1 LOCATION PLANS

NTS



CONTACTS:

BUILDING OWNER/OWNER:
MY HOUSE MY CASTLE
6901 RAMSEY ROAD
MIDDLETON, WISCONSIN 53562

MARK HOOVER

ARCHITECT:
SHULFER ARCHITECTS, LLC
1918 PARMENTER ST., STE 2
MIDDLETON, WI 53562

BRAD KONING, AIA
608-836-7570

SNOW LEOPARD SPIRITS

MIXED-USE REDEVELOPMENT

5291 FELLAND ROAD

TOWN OF BURKE, WISCONSIN

COVER SHEET

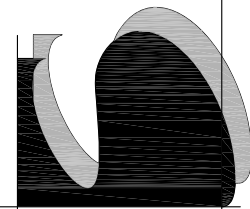
PROJECT NOTES, AREA MAP, KEY

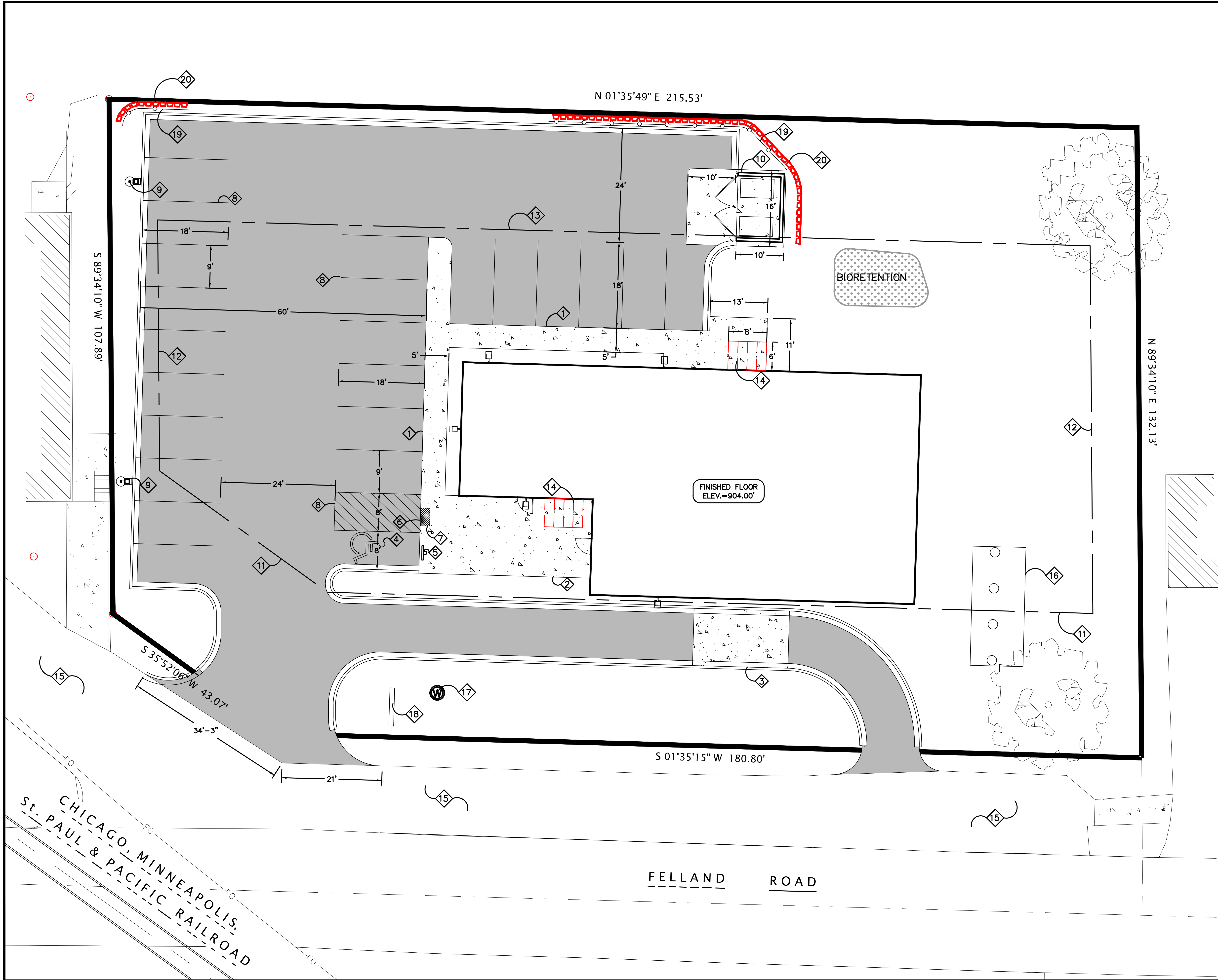
08.20.14
COND. USE PERMIT

CS

1918 PARMENTER ST., STE 2
MIDDLETON, WISCONSIN 53562
TELEPHONE: 608.836.7570
FAX: 608.836.8220

SHULFER
ARCHITECTS, LLC





PLAN KEY

- 1 THICKENED EDGE SIDEWALK
- 2 CONCRETE PATIO
- 3 CONCRETE APRON AT DRIVE-THRU
- 4 VAN ACCESSIBLE STALL, TYP.
- 5 VAN ACCESSIBLE PARKING SIGN, TYP.
- 6 ACCESSIBLE RAMP
- 7 DETECTABLE WARNING STRIPS
- 8 PAVEMENT STRIPING
- 9 LIGHT POLE
- 10 TRASH ENCLOSURE - SEE ARCHITECTURAL PLANS
- 11 30' FRONT SETBACK
- 12 10' SIDEYARD SETBACK
- 13 25' REAR SETBACK
- 14 BICYCLE PARKING
- 15 EX ASPHALT
- 16 PROPOSED SEPTIC TANK
- 17 PROPOSED WELL
- 18 MONUMENT SIGN
- 19 FENCE OR RAILING
- 20 SEGMENTAL RETAINING WALL

PAVEMENT KEY

- ASPHALT PAVEMENT
- CONCRETE

SITE INFORMATION

SITE ADDRESS: 5291 FELLAND ROAD
SITE ACREAGE TOTAL: 28,044 SF (0.64 ACRES)
BUILDING AREA = 4,050 GROSS SF
NUMBER OF PARKING STALLS: 24
TOTAL BIKE PARKING: 8
PERCENTAGE OF PERVIOUS AREA: 41%



BEARINGS ARE REFERENCED TO THE WISCONSIN COUNTY COORDINATE SYSTEM, DANE ZONE, THE EAST LINE OF THE SW 1/4 OF SECTION 23, T8N, R10E

0 10 20 30
SCALE : 1" = 20' (24 X 36)
1" = 40' (11 X 17)

| ISSUANCE/REVISION | DATE |
|--------------------|----------|
| SITE PLAN APPROVAL | 08-18-14 |
| | |
| | |
| | |

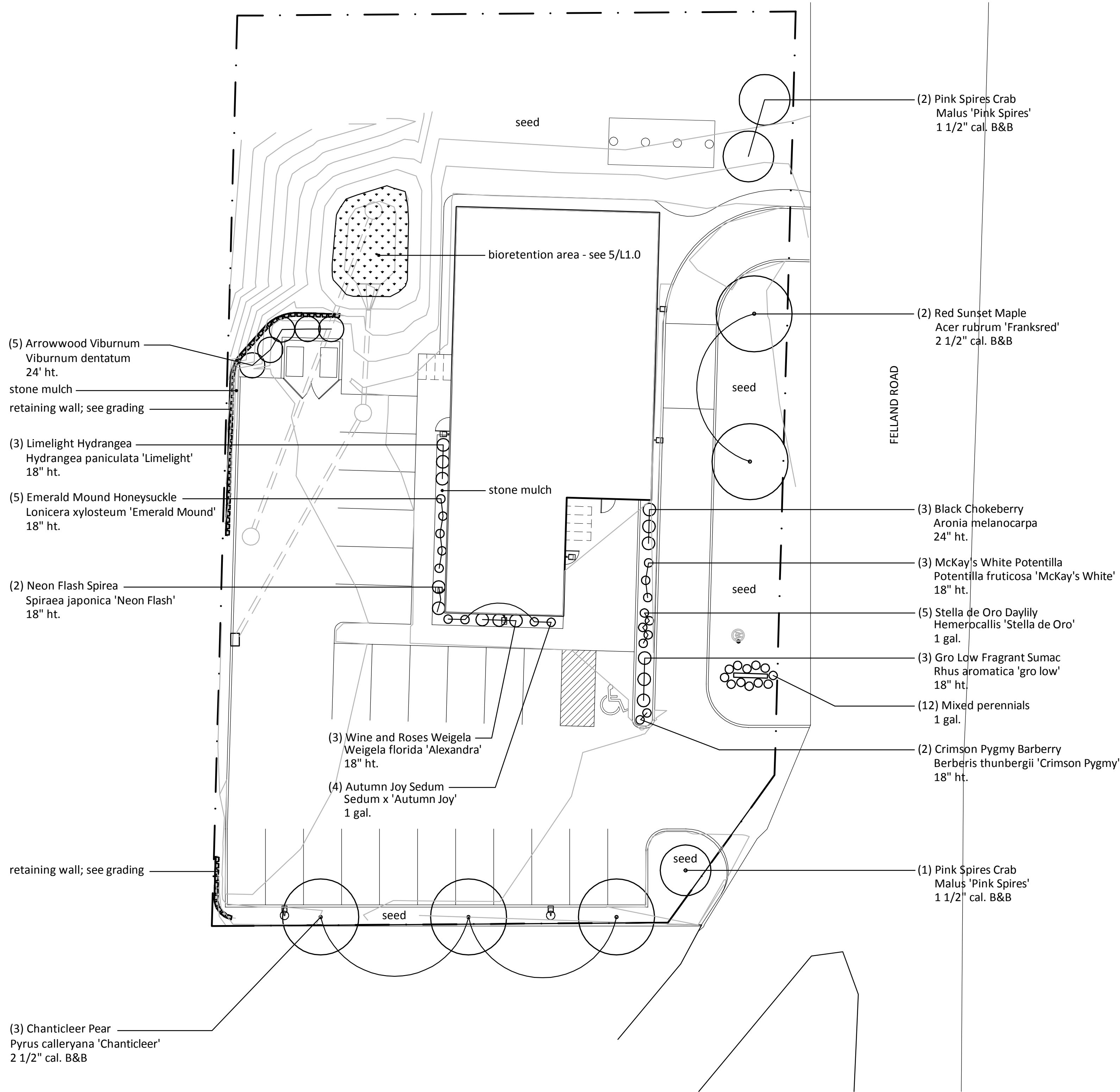
818 N Meadowbrook Ln
Waunakee, WI 53597
phone (608) 849-9378
fax (608) 237-2129

**PROFESSIONAL
ENGINEERING**
LLC

**SNOW LEOPARD SPIRITS
SITE PLAN**

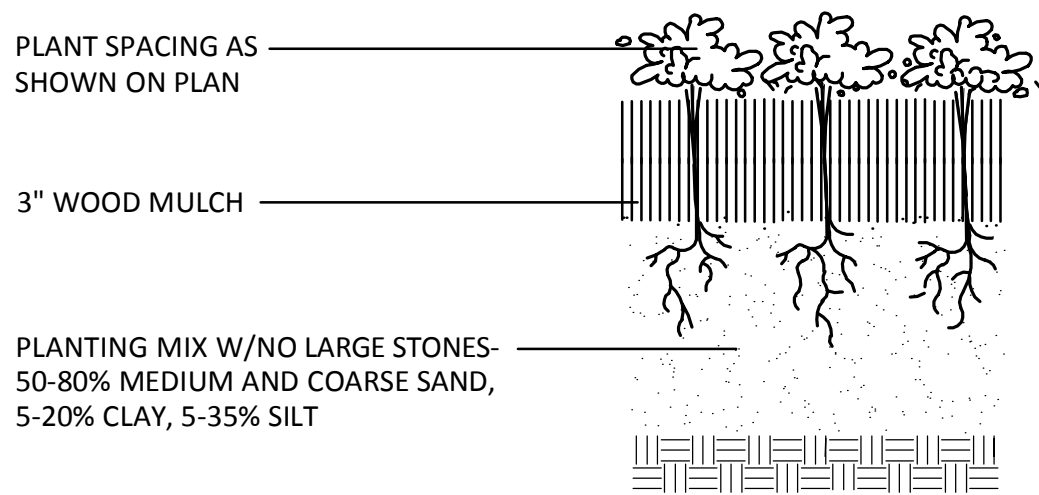
TOWN OF BURKE, WISCONSIN

C102

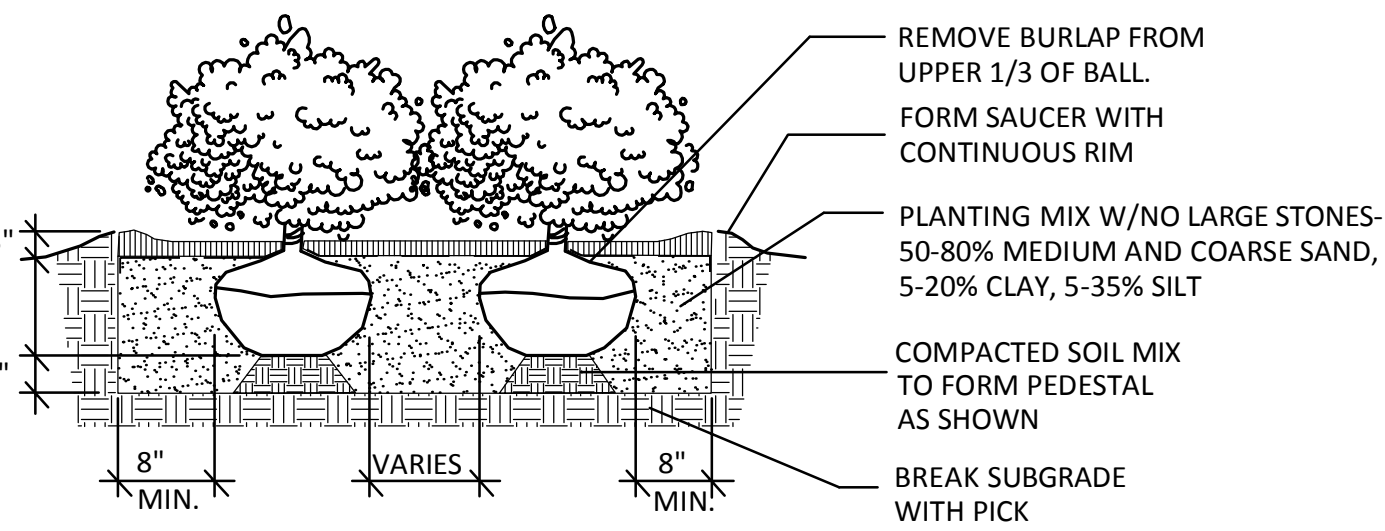


1 LANDSCAPE PLAN

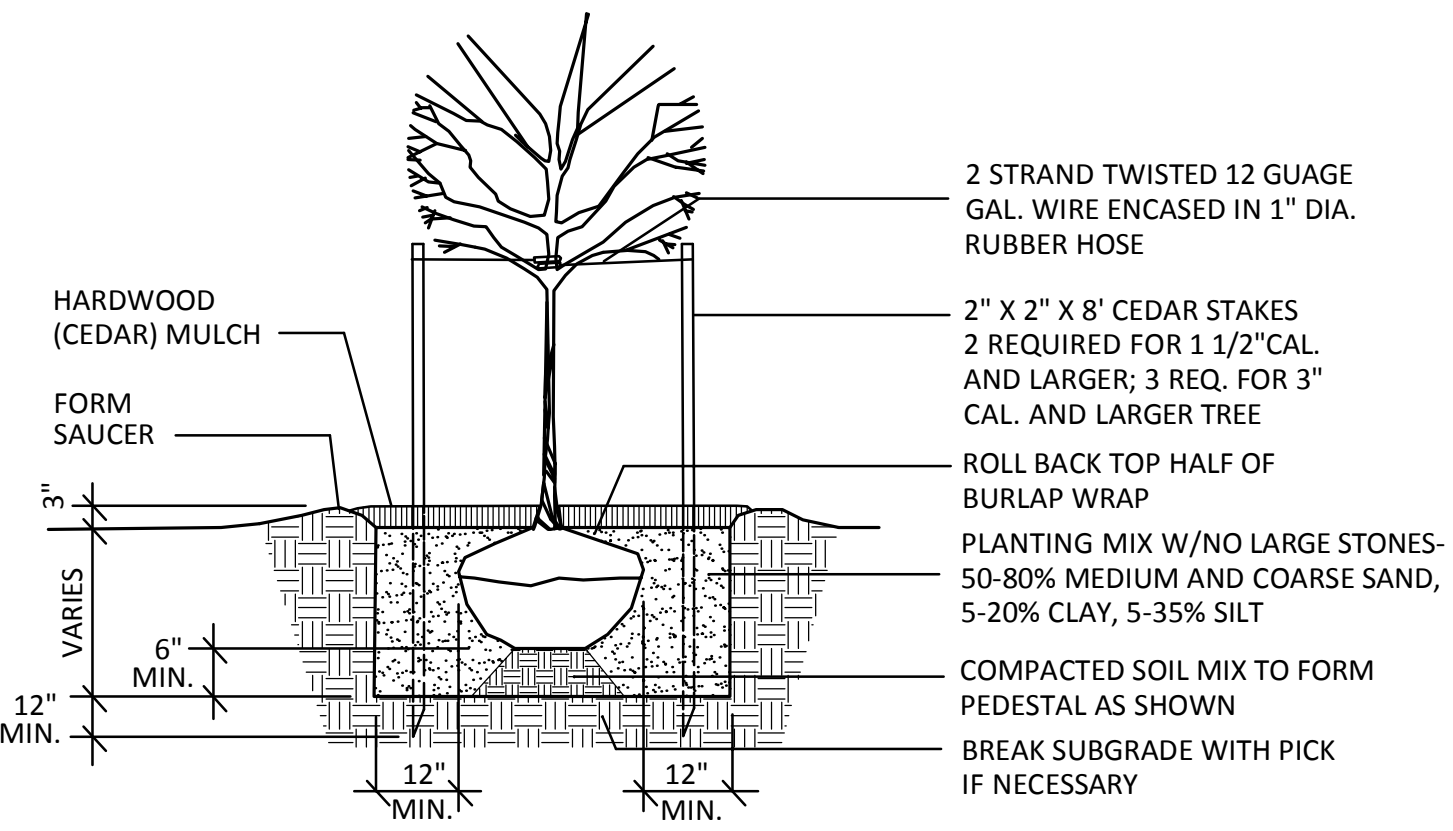
- NOTES:**
- Individual lawn trees and shrub groupings found within seeded lawn areas are to receive wood mulch rings and/or wood mulch beds consisting of a mixture of recycled brown dyed wood mulch spread to a 3" min. depth over a pre-emergent herbicide.
 - "Seed" areas shall be finish graded and seeded at a rate of 4 lbs. per 1,000 sq. ft. Basis of Design: Madison Parks Lawn Seed Mix. EarthCarpet Corporation. (www.seedsolutions.com)
 - Slope areas of 3:1 or greater and concentrated overland drainage channels shall be seeded with lawn seed mixture and overlaid with a single net, photo biodegradable straw blanket that is pegged with metal staples or biodegradable stakes. Basis of Design: Tensar D575. North American Green. (www.nagreen.com)
 - Areas labeled "stone mulch" to receive locally available, clean washed 1 1/2" - 2 1/2" durable landscape stone spread to a 3" min. depth over a commercial grade weed barrier fabric. Basis of Design for weed barrier: Dewitt Pro-5 Weed Barrier. Dewitt Company. (www.dewittcompany.com)
 - "Edging" to be professional grade polyethylene lawn edging available in 20' flat strips. Basis of Design: Valley View Black Diamond. Valley View Industries. (www.valleyviewind.com/professional/)
 - "Native seed" areas shall be finish graded and seeded at a rate of 4 lbs. per 1,000 sq. ft. Basis of Design: Olds Seeds Midwest Native Wildflower Mix. Olds Brand Seed Company. (www.oldsgardenseed.com/products/mixes/midwest.html)



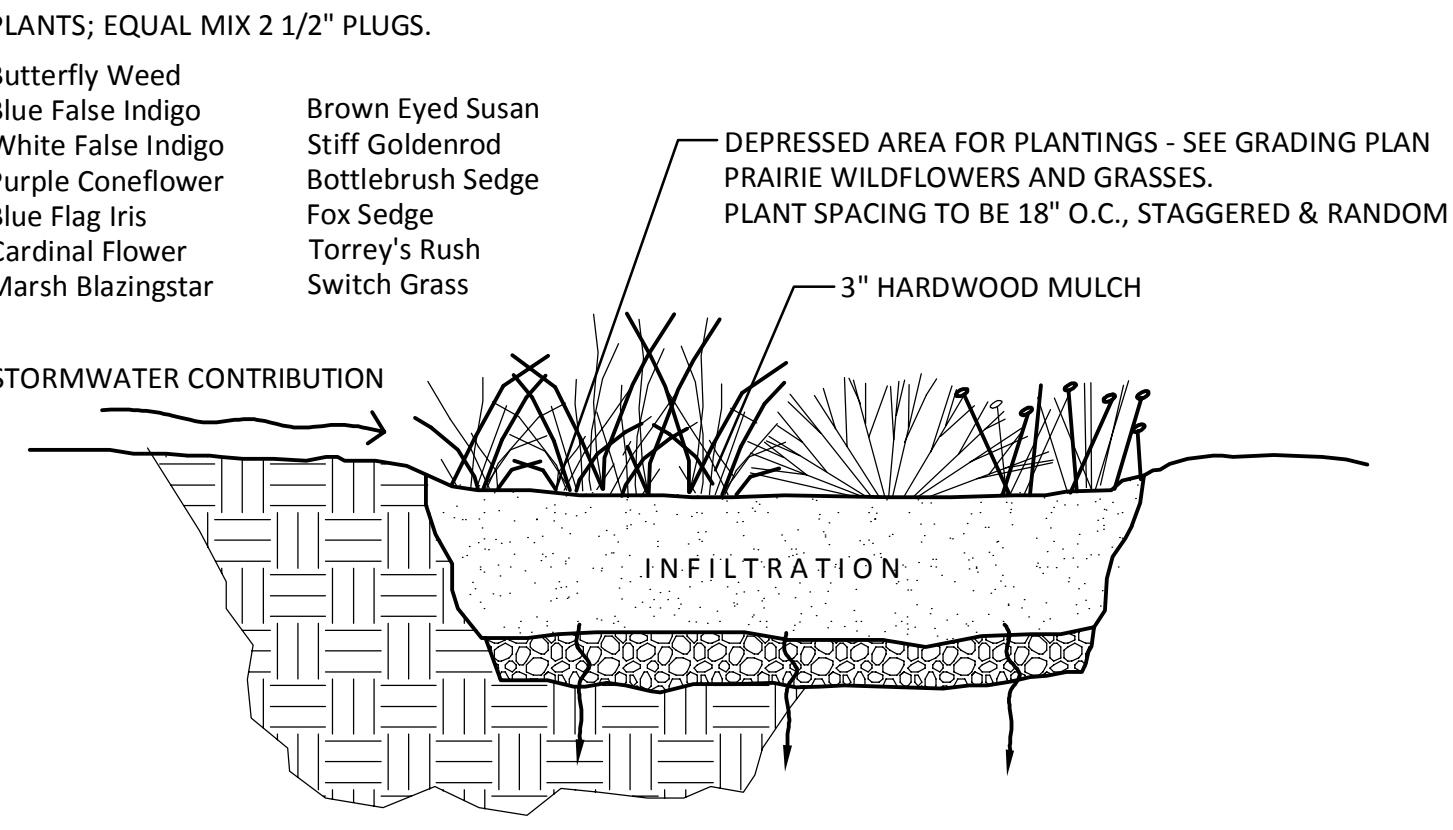
2 PERENNIAL PLANTING



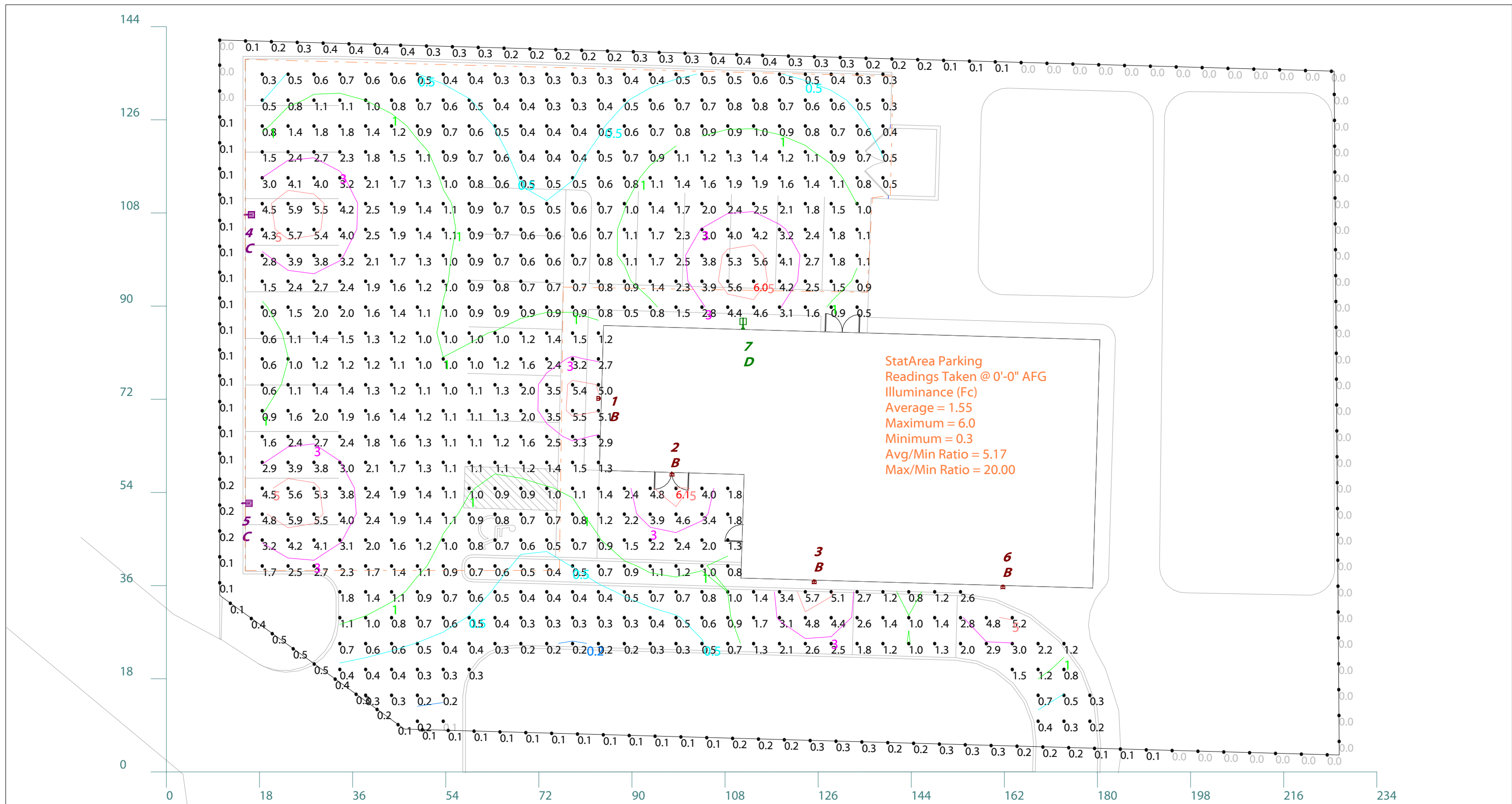
3 SHRUB PLANTING



4 TREE PLANTING



5 BIORETENTION AREA



Lighting Layout
Scale: 1 inch= 18 Ft.



Prepared For:
Schwind Lawless Sales Inc.
5381 North 118th Court
Milwaukee, WI 53225
Tel: 414-393-1400
Fax: 414-393-1430

Job Name:
Snow Leopard Spirits
5291 Felland Rd
Burke, WI 53719
Lighting Layout
Version C

Scale: as noted

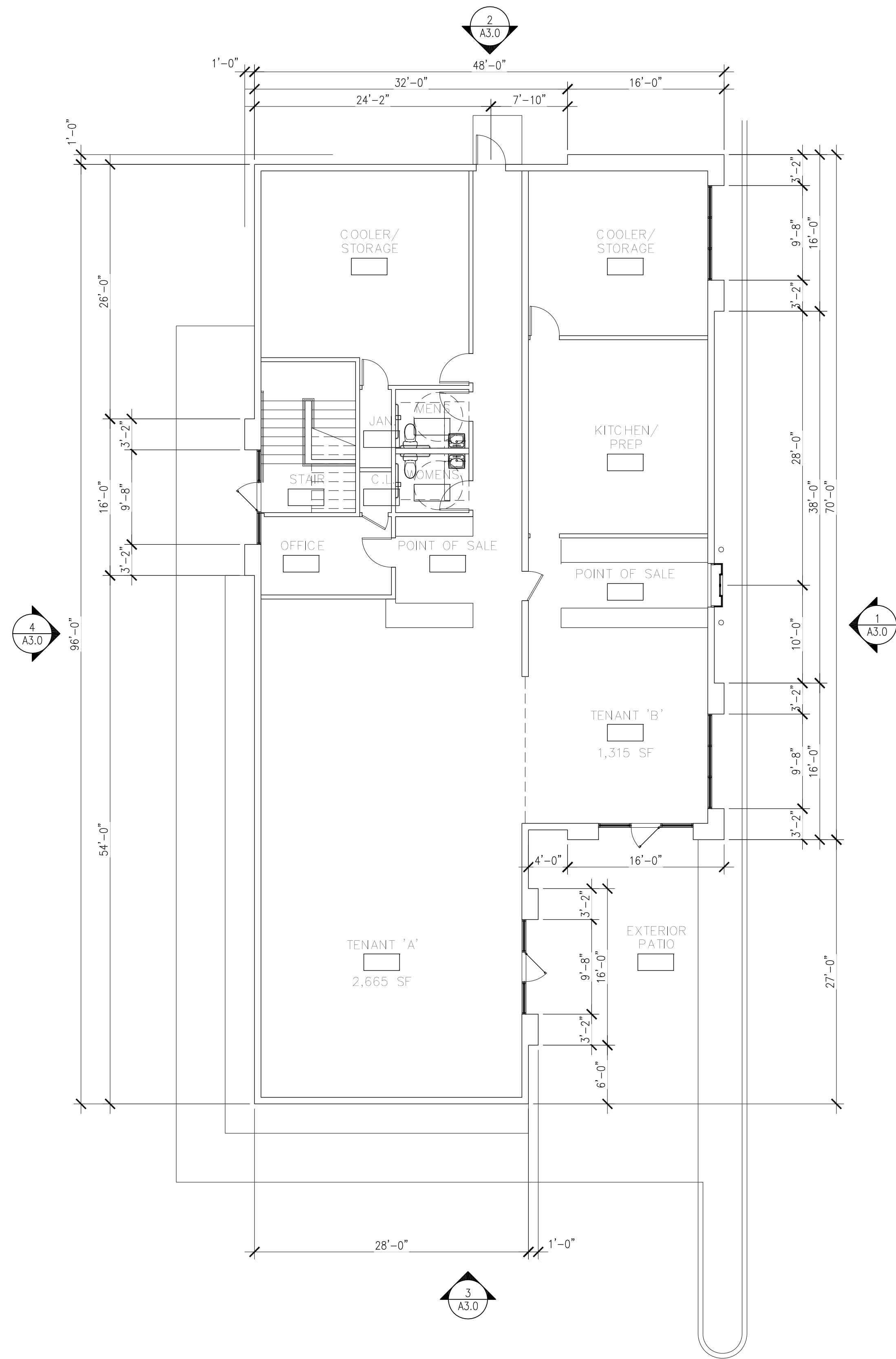
Date:8/14/2014

Filename: Snow Leopard Spirits Layout 081314C.AGI

Drawn By: B. Lynch

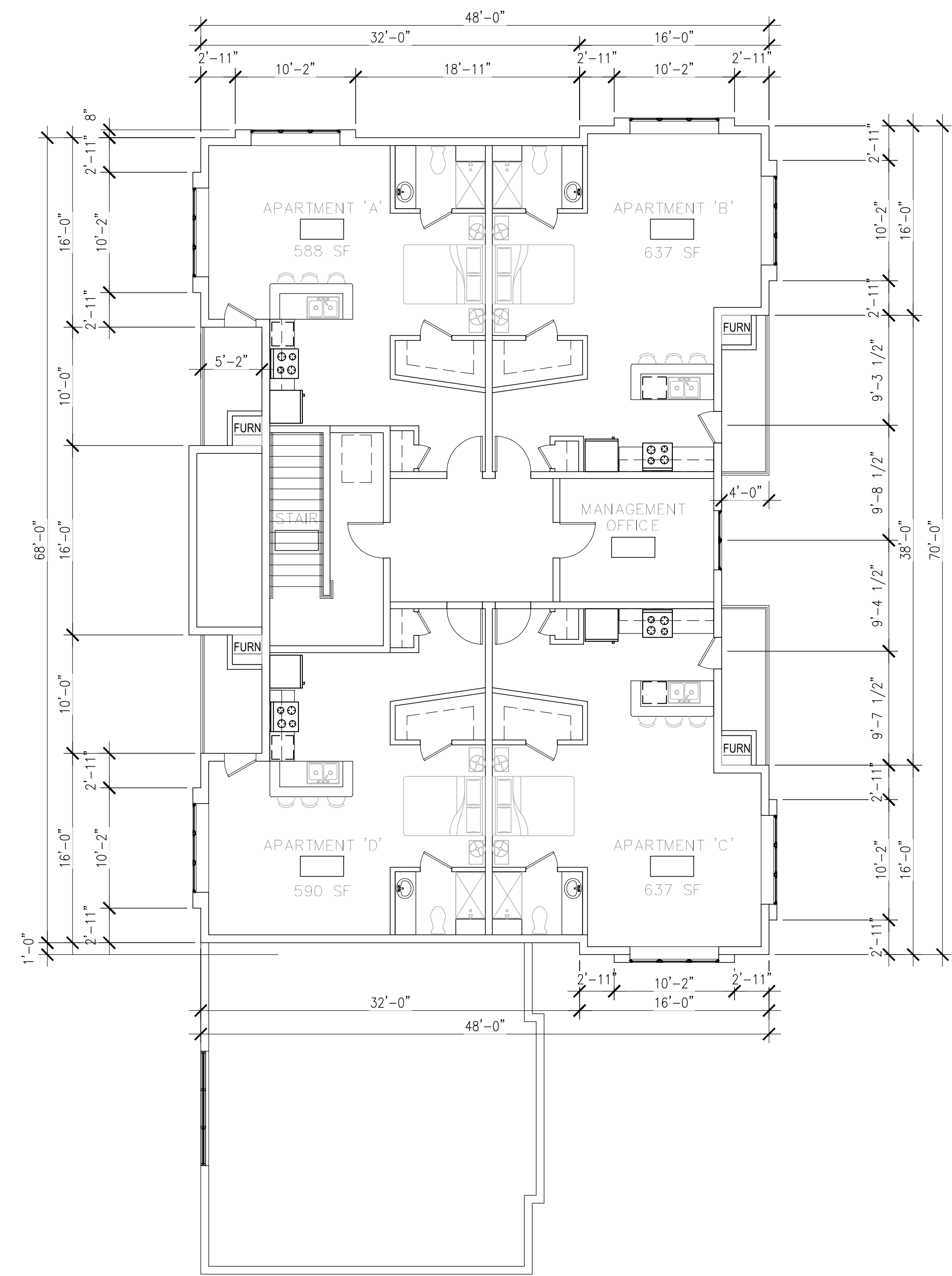
Lighting Design Disclaimer

The Lighting Analysis, ezLayout, Energy Analysis and/or Visual Simulation ("Lighting Design") provided by RAB Lighting Inc. ("RAB") represents an anticipated prediction of lighting system performance based upon design parameters and information supplied by others. These design parameters and information provided by others have not been field verified by RAB and therefore actual measured results may vary from the actual field conditions. RAB recommends that design parameters and other information be field verified to reduce variation. RAB neither warranties, either implied or stated with regard to actual measured light levels or energy consumption levels as compared to those illustrated by the Lighting Design. RAB neither warranties, either implied or stated, nor represents the appropriateness, completeness or suitability of the Lighting Design intent as compliant with any applicable regulatory code requirements with the exception of those specifically stated on drawings created and submitted by RAB. The Lighting design is issued, in whole or in part, as advisory documents for informational purposes and is not intended for construction nor as being part of a project's construction documentation package.



1 FIRST FLOOR PLAN
1/8"=1'-0"

NORTH



2 SECOND FLOOR PLAN
1/8"=1'-0"

NORTH



1 EAST ELEVATION
1/8"=1'-0"

- EXTERIOR MATERIAL NOTES:
- ① STANDING SEAM METAL ROOFING AND FASCIA
COLOR: McELROY METALS COLONIAL RED
 - ② EXTERIOR INSULATION AND FINISH SYSTEM (EIFS)
COLOR:
 - ③ EXTERIOR INSULATION FINISH SYSTEM (EIFS)
ACCENT COLOR:
 - ④ EXTERIOR INSULATION FINISH SYSTEM (EIFS)
ACCENT TRIM COLOR:
 - ⑤ DOUBLE HUNG WINDOWS WITH FIXED TRANSOMS. DUAL
PANE LOW-E FIBERGLASS
 - ⑥ THERMALLY IMPROVED ANODIZED ALUMINUM STOREFRONT
WITH 1" LOW-E GLAZING.
 - ⑦ CAST STONE; HERITAGE STONE, THIN VENEER ROCK FACE
COLOR: WHEAT
 - ⑧ POWDER COATED ALUMINUM BALCONY RAILING. 1 1/2"
SQUARE SUPPORT TUBING WITH 3/4" SQUARE VERTICAL
SLATS.
 - ⑨ EXTERIOR LIGHTING; WALL SCONCE
REFER TO SITE LIGHTING PLAN FOR ADDITIONAL NOTES
 - ⑩ TRANSACTION WINDOW, DRIVE-THRU



2 NORTH ELEVATION
1/8"=1'-0"



3 SOUTH ELEVATION
1/8"=1'-0"



4 WEST ELEVATION
1/8"=1'-0"