

An aerial photograph of the Yahara Watershed, showing a large body of water (Monona Lake) in the foreground, a city (Madison) in the middle ground, and a vast, flat landscape extending to the horizon under a clear blue sky.

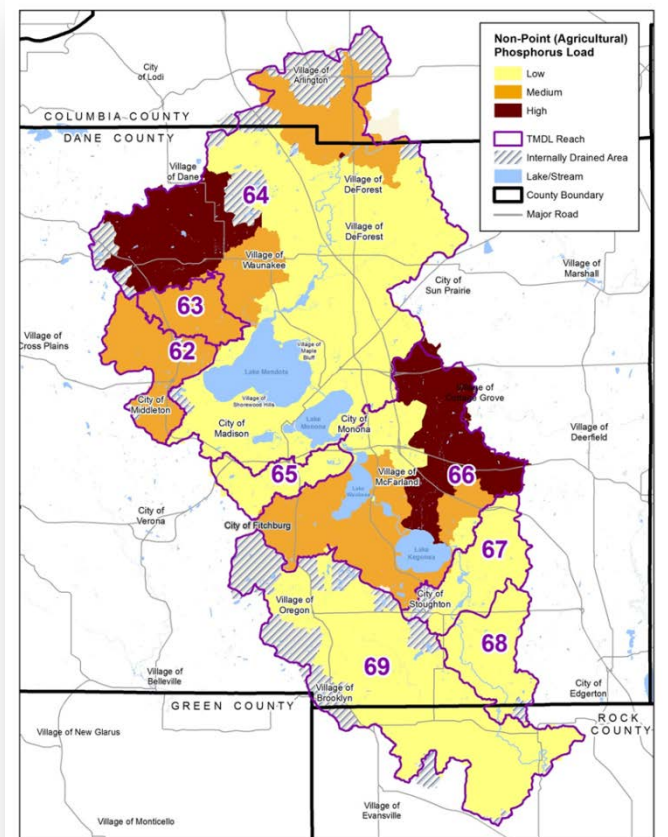
YAHARA WATERSHED

LCC Meeting
September 29, 2016

Agricultural Nonpoint Source Implementation Funding

Funds Available

- Yahara CLEAN Implementation
- Yahara WINS
- RCPP (EQIP)
- LWRM/SWRM/Staffing
- Other funds



Yahara CLEAN

- Report was a partnership between Dane County, City of Madison, DNR, DATCP
 - 2008-2010 partnership met
 - 2010 Report – *A CLEAN Future for the Yahara Lakes: Solutions for Tomorrow, Starting Today*
 - 2012, CLA continued work in a new report – *Yahara CLEAN Strategic Action Plan*

Yahara CLEAN Implementation

- Funds allocated by the County for implementation
 - Dane County Clear Lakes Initiative Resolution 196, 2012
- Approximately \$2.4 million currently available
 - No new funds being requested for 2017
- Types of programs funded
 - ▣ Harvestable Buffers
 - ▣ Low Disturbance Manure Injection
 - ▣ Incentives when used with other funding sources
 - ▣ General conservation practices

Yahara WINS

- Adaptive Management Project led by Madison Metropolitan Sewerage District (MMSD)
- Currently funding 2 LCC staff positions
 - ▣ Approximately \$350,000
 - ▣ Funding from both MMSD and Yahara WINS
- Full scale implementation starting January 2017
 - Working on developing a service agreement
 - Anticipate additional funding for LCC staff and practice implementation

Yahara Watershed RCPP

- Federal funds through EQIP dedicated to a project area
- \$1.3 million available over a 5 year project term
 - \$925,000 available for practices
 - \$375,000 available for technical assistance (staffing)
 - Flat rate cost-share funding
 - After first year, approximately \$175,000 used
- Approximately \$3.8 million matching funds and in-kind services provided by partners

**Use Yahara CLEAN Funds to incentivize projects*

DATCP Funds

- Land & Water Resource Management (LWRM)
 - ▣ Bonded funds used for structural practices
 - ▣ \$45,000 in 2016

- Soil & Water Resource Management (SWRM)
 - ▣ Funds used for nutrient management and education
 - ▣ \$45,000 in 2016

- Staffing Grants
 - ▣ Approximately \$170,000 in 2016

**Use Yahara CLEAN Funds to incentivize projects*

Other Funding Options

- Clean Lakes Alliance
 - ▣ Specific projects
 - ▣ Example: extending harvestable buffer contracts

- DNR Grants
 - ▣ Targeted Runoff Management Grants
 - ▣ Apply for individual projects
 - ▣ No applications in recent years