

# Final Plat - Oregon Parks Neighborhood Addition

## Village of Oregon

Plat consists of 50 lots, 21.38 acres.

Parks - No parkland shown.

Parkways -North Alpine Pkwy

Expressways - N/A

Major Highways - CTH CC further to the south.

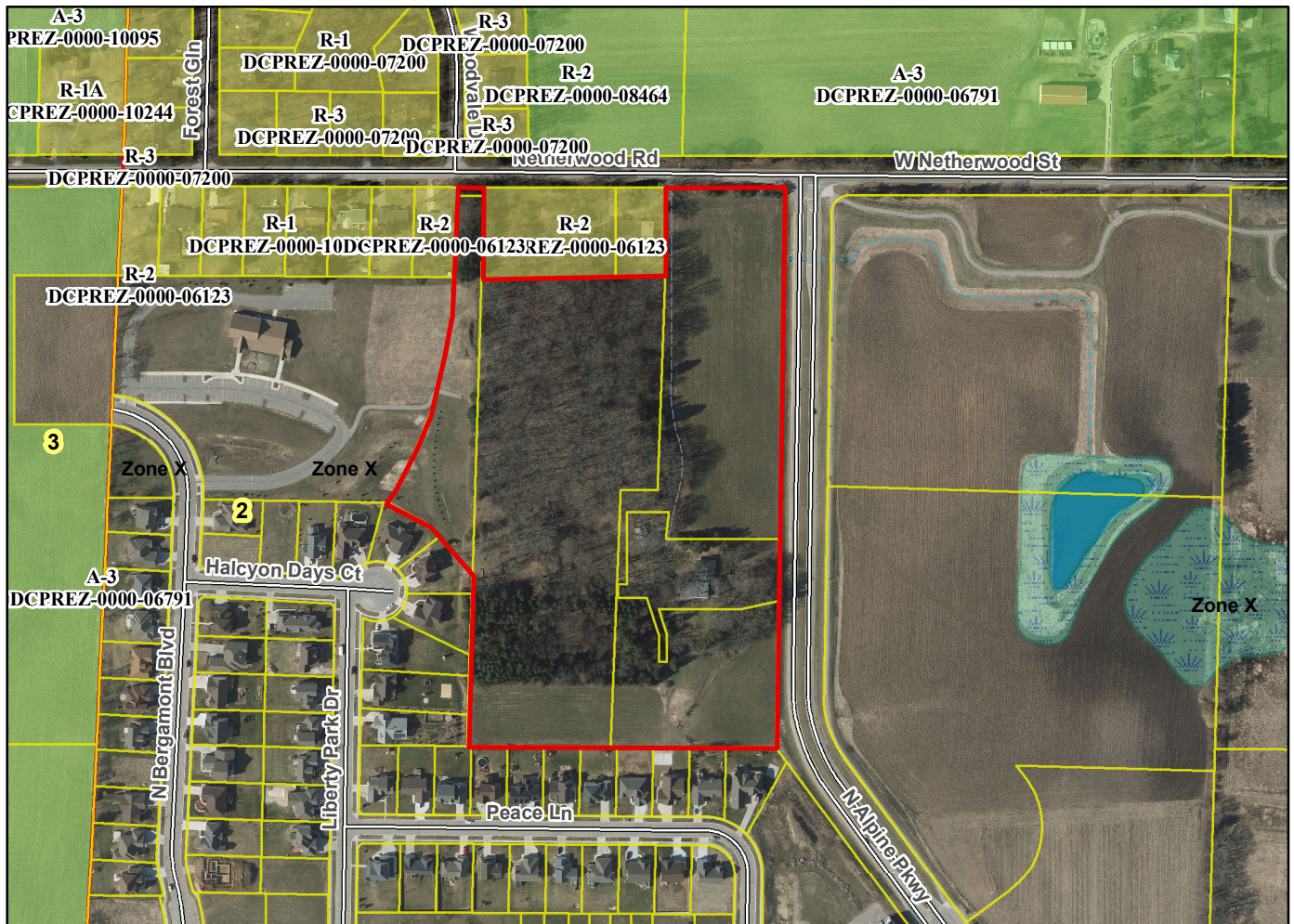
Airports - Dane County Regional

Drainage Channels - Easements shown.

Schools - established

Other Development - OL's 6, 7, 8, 10, 13 - dedicated to the Village for stormwater management facilities.

Plats of subdivisions located in all other incorporated municipalities shall be submitted to the committee, as provided by section 236.12(2)(b) of the Wis. Stats., for the purpose of determining whether the committee has any objection to the plat. The basis for any objection to any such plat shall be that the plat conflicts with parks, parkways, expressways, major highways, airports, drainage channels, schools or other planned public developments.



Motion to certify with no objections: \_\_\_\_\_, Second: \_\_\_\_\_ Vote: \_\_\_\_\_