

Final Plat - 1st Add'n to Smith's Crossing McCoy Add'n

City of Sun Prairie

Plat consists of 146 lots, 27.8 acres.

Parks - OL 89 dedicated to the public as open space. OL 92 is dedicated to the public for trails.

Parkways -

Expressways - N/A

Major Highways - USH 151 to the north.

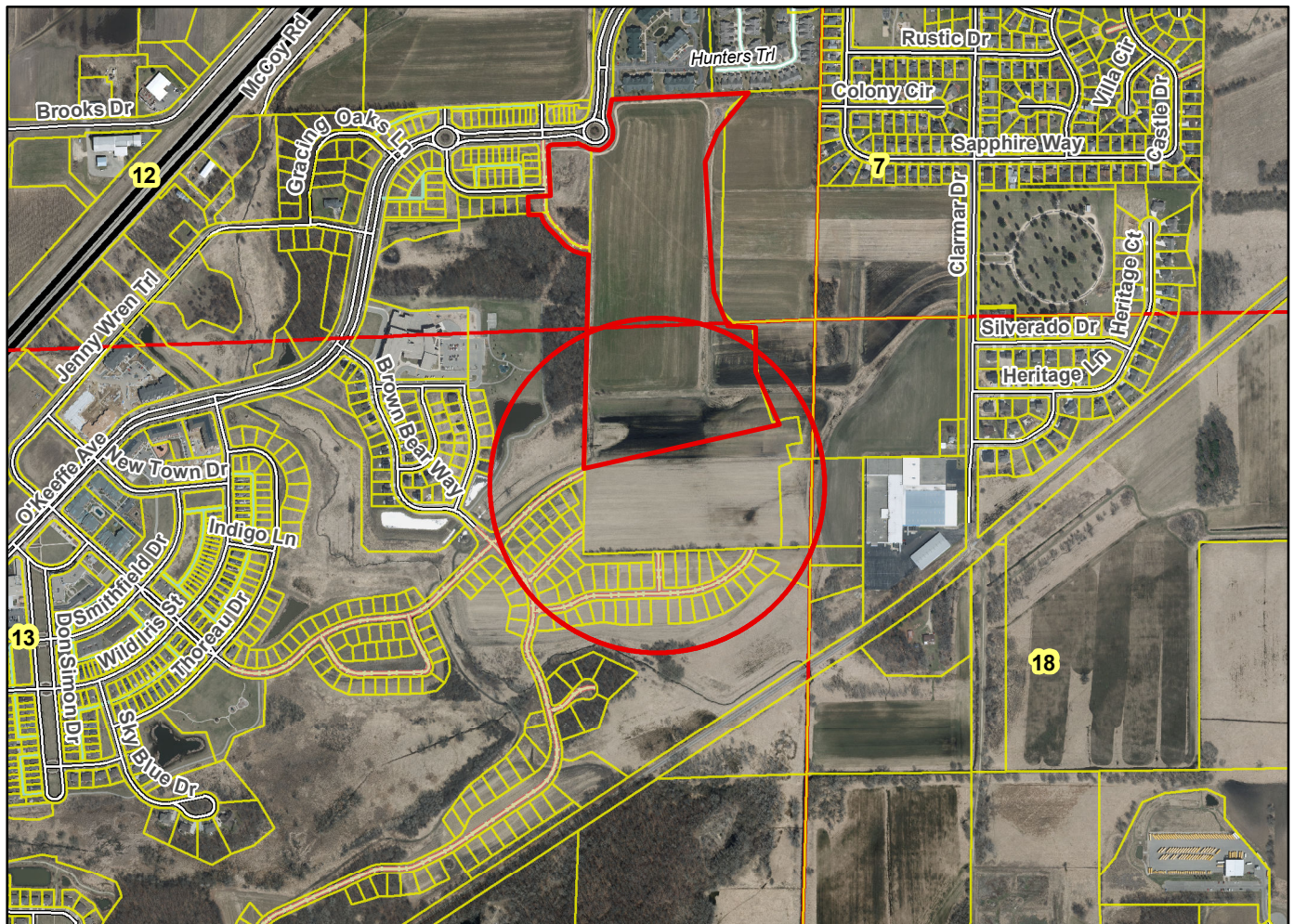
Airports - Dane County Regional

Drainage Channels - Drainage arrows shown on the plat.

Schools - established

Other Development - OL 93 being dedicated to the public for stormwater management.

Plats of subdivisions located in all other incorporated municipalities shall be submitted to the committee, as provided by section 236.12(2)(b) of the Wis. Stats., for the purpose of determining whether the committee has any objection to the plat. The basis for any objection to any such plat shall be that the plat conflicts with parks, parkways, expressways, major highways, airports, drainage channels, schools or other planned public developments.



Motion to certify with no objections: _____, Second: _____ Vote: _____