



Dane County Land & Water Resources Department

Conservation and Phosphorus Reduction Activities

Kyle Minks

Overview

- 2018 Yahara WINS Reporting
- Continuous Cover Program
- Harvestable Buffers
- Additional Department Activities



Annual Dane County Yahara WINS Adaptive Management Report



Annual report on Dane County Land & Water Resources Department efforts assisting with the implementation of conservation practices that reduce phosphorus runoff for the Yahara WINS Adaptive Management project.

2018 Report Year

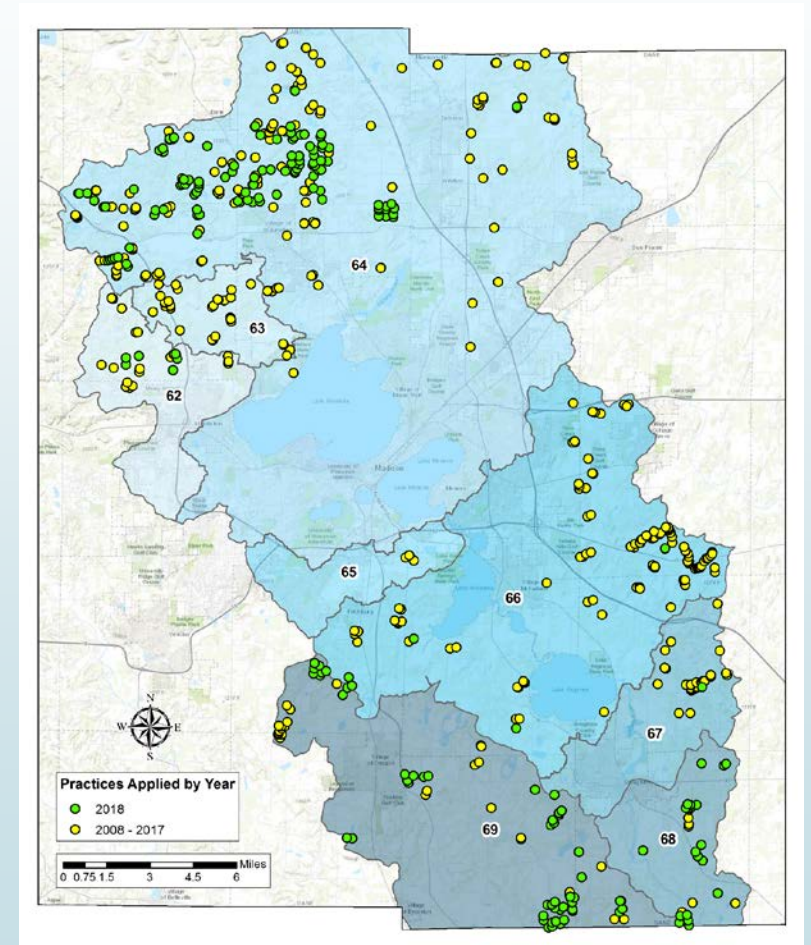
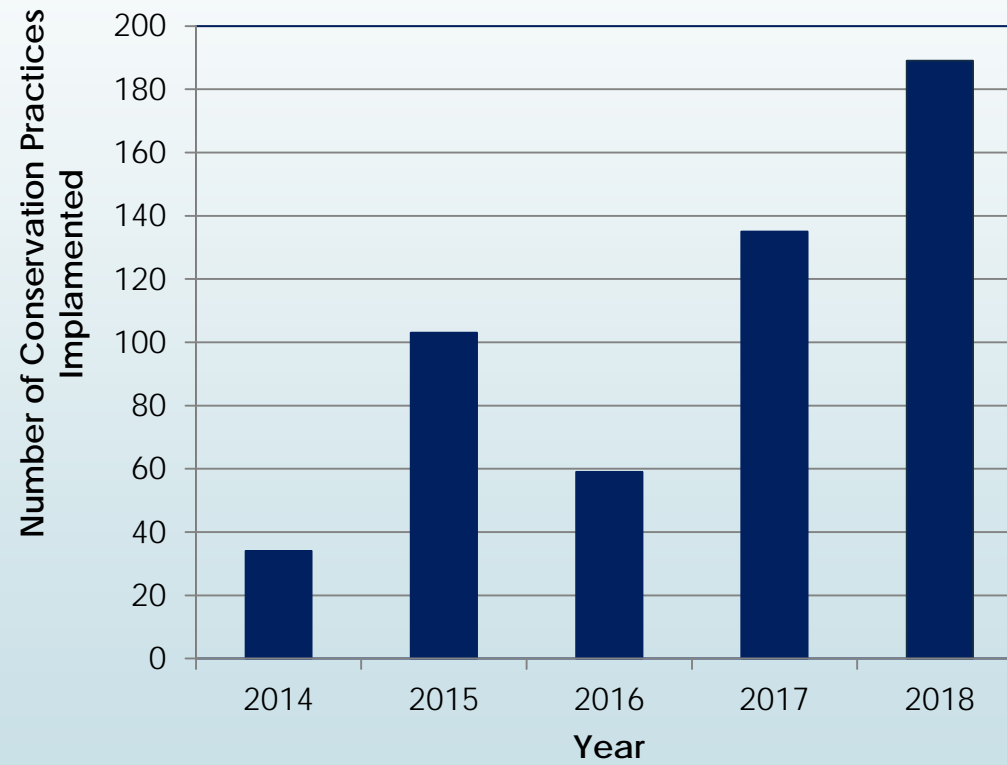


2018 Yahara WINS Adaptive Management Report

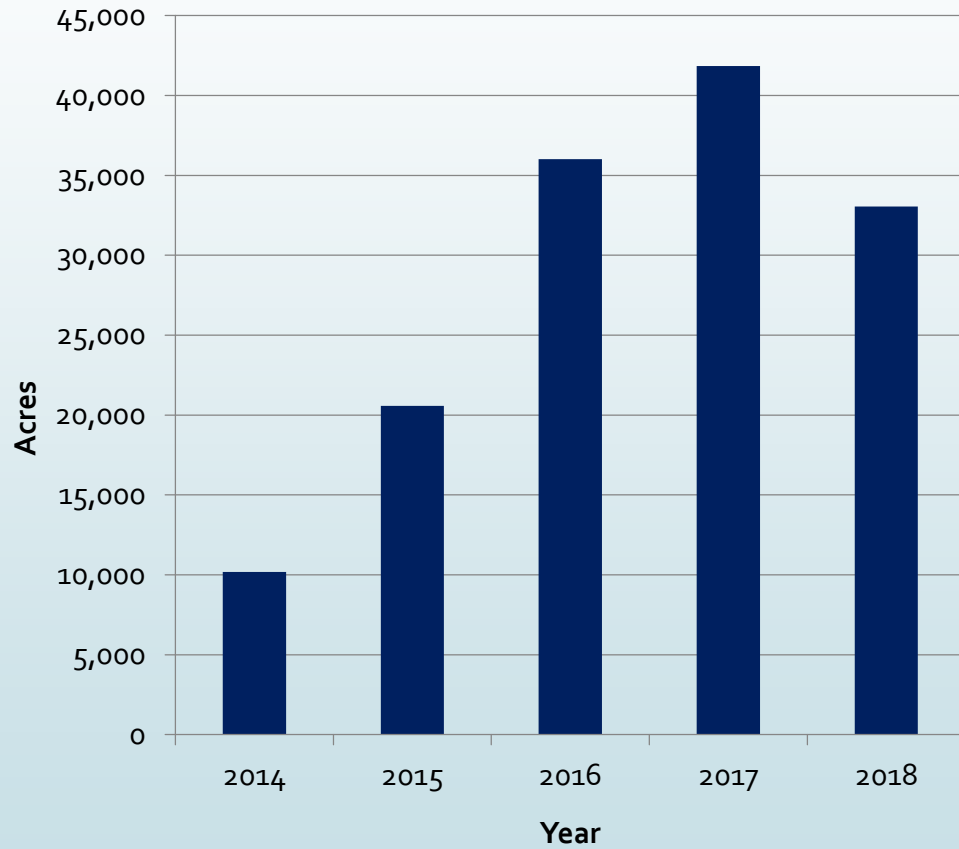
- Implemented over 180 new and tracked over 630 conservation practices
- Tracked over 36,800 acres of nutrient management plans
- Entered into 37 cost-share agreements for conservation practices and systems within the Yahara watershed.
- Allocated over \$835,000 in cost-share assistance within the Yahara watershed.
- Reduced and tracked a total of 21,570 pounds of phosphorus from conservation practices implemented.
 - New = 7,123
 - Carryover = 14,447
- <https://lwr.d.countyofdane.com/documents/pdf/Plans%20and%20Reports/2018-Dane-County-YaharaWINS-Report-FINAL.pdf>



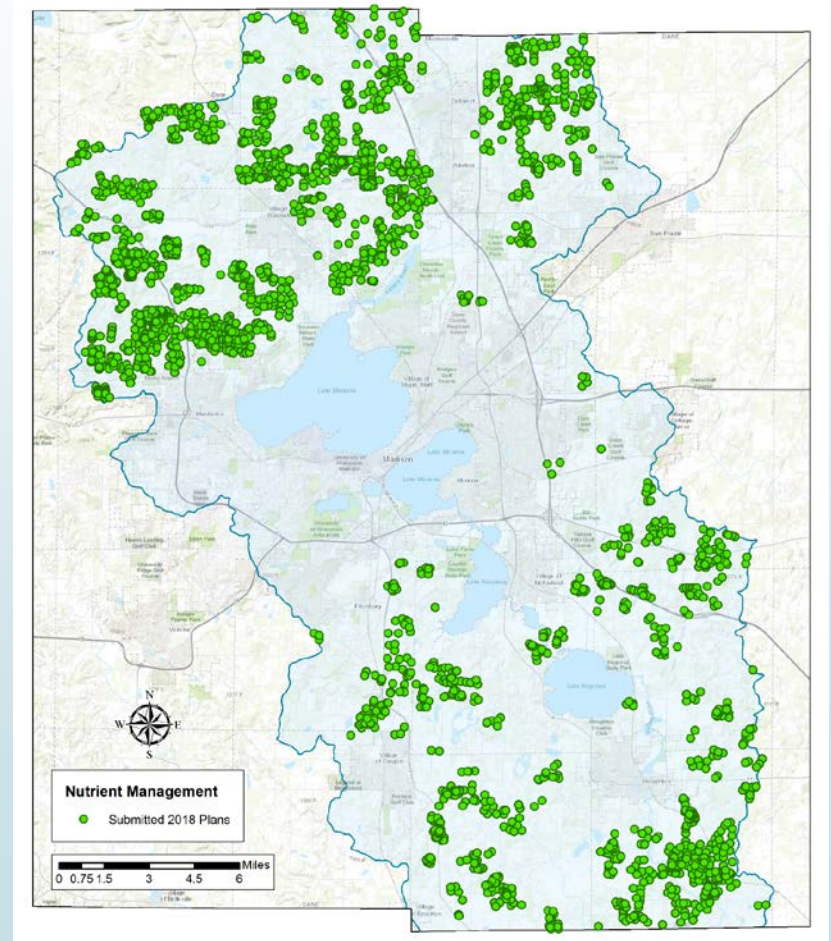
Conservation Practices



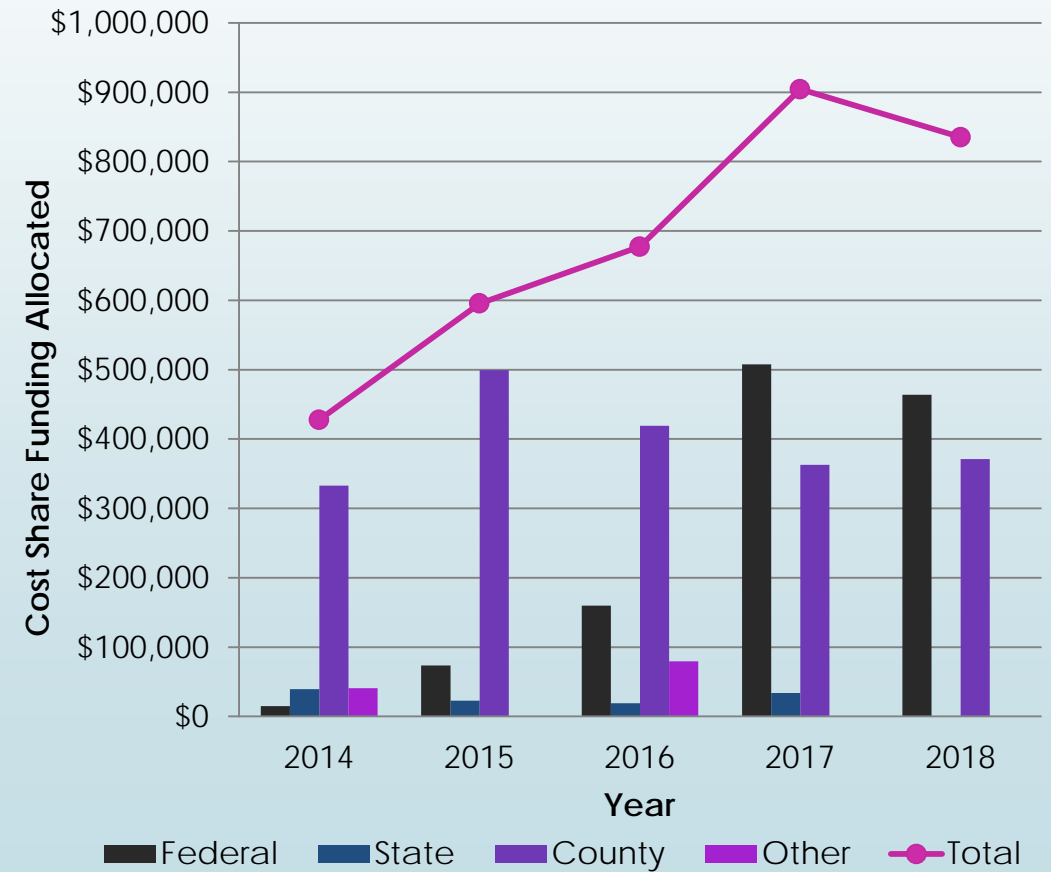
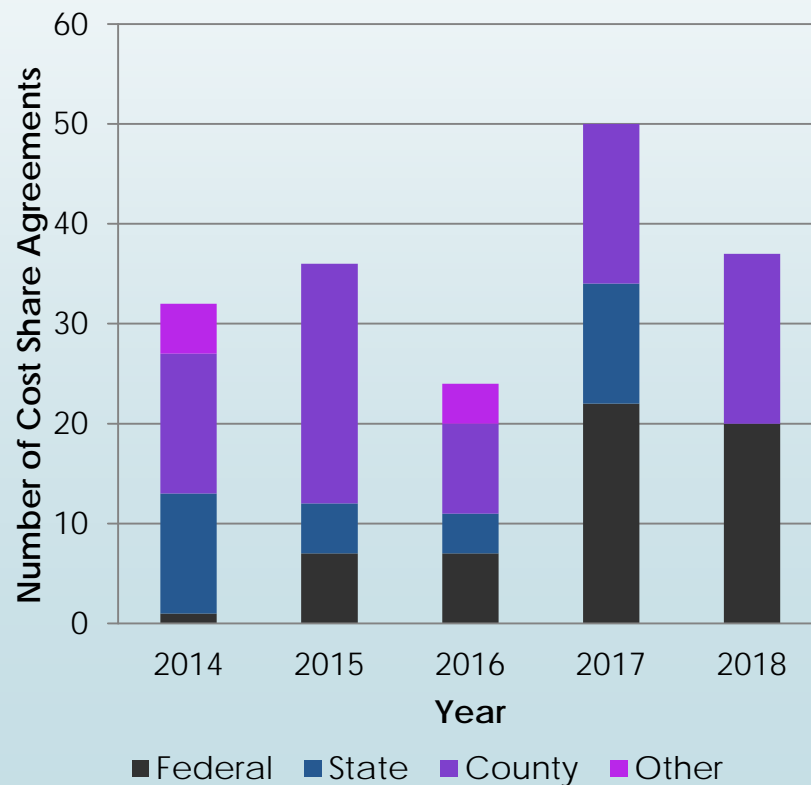
Nutrient Management Plans



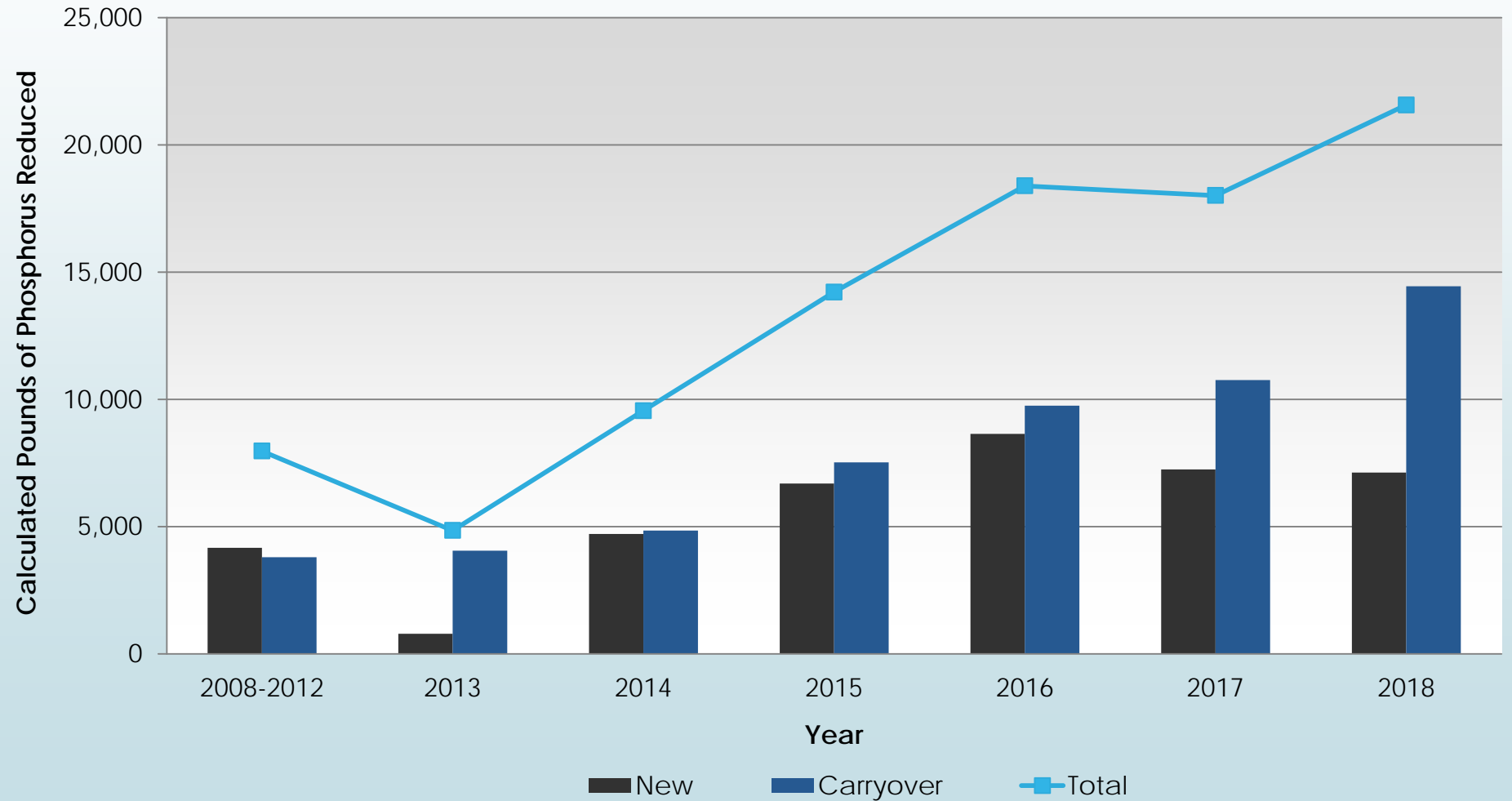
*Acres within internally drained areas are removed



Cost-share Assistance



Phosphorus Reductions



Continuous Cover Program (CCP)

Provides cost-share funding to landowners and producers for the establishment of perennial cover.

- Funding for 300 acres
 - Over 1,000 acres applied for
 - Remaining applicants will be contacted if additional funding is available
- Ranking and contracting occurring now through summer
- Establishment as early as fall 2019
- <https://lcd-lwr.d.countyofdane.com/Continuous-Cover-Program>

Continuous Cover Program



Continuous Cover Program (CCP)

This program will allow agricultural producers and landowners to convert land that is currently in an annual crop into a perennial cool-season grass mix, native prairie mix, or grazing mix. Lands that are currently planted in perennial cover may also be eligible for this program to help landowners keep this cover in place. Landowners interested in this program will work with Land & Water Resources Department staff to determine the best strategy for their unique farm operation.

What are the benefits of this program?

- ✓ Total upfront payment is between \$1,650 - \$2,500 per acre.
 - Establishment payment based on cover (\$150/acre for cool season, \$250/acre for native cover).
 - Payment will be based upon an annual rental rate of \$100-\$150/acre (which includes \$25/year for maintenance).
- ✓ Retain soil and nutrients and promote infiltration.
- ✓ Increase wildlife and pollinator habitat to support native animal populations and beneficial insects.
- ✓ Program allows for harvesting and grazing of the cover, providing an added economic and usage benefit.

Eligibility Requirements:

- ✓ Eligible cropland includes:
 - Planted to a row crop, history self-certified on application, which will be verified by staff.
 - Previously restored cropland acres.

For more information, please contact:

Land Conservation Division
(608) 224-3730
landcon@countyofdane.com



Harvestable Buffers

2019 Implementation

- Three completed contracts
 - Total cost-share=\$138,700
 - 8 acres in Reach 68 (2)
 - 11 acres in Reach 69 (1)
- One pending contract
- Cool season grass mixes
- 15 year agreements

TMDL REACH	2014	2015	2016	2017	2018	TOTAL AMOUNT
63	7.3	0	0	2.3	0	9.6
64	3.5	0	6.2	0	0	9.7
66	0	28.9	11.3	7.4	1.4	49.0
67	0	23.2	1.9	2.2	0	27.3
68	0	0	0	0	8	8.0
69	4.4	0	0	2.2	22.2	28.8
TOTAL	15.2	52.1	19.4	14.1	31.6	132.4

Harvestable Buffers

for more information, please contact:

Eric Krueger
Conservation Specialist
krueger.eric@dcnr.wisconsin.gov
(608) 281-1021

Shawn Isner
Conservation Specialist
isner.shawn@dcnr.wisconsin.gov
(608) 281-1021

Landowner Resources
www.dnr.wisconsin.gov/landowner
Photo credit: Scott Mansueti



Yahara River Watershed Harvestable Buffer Program

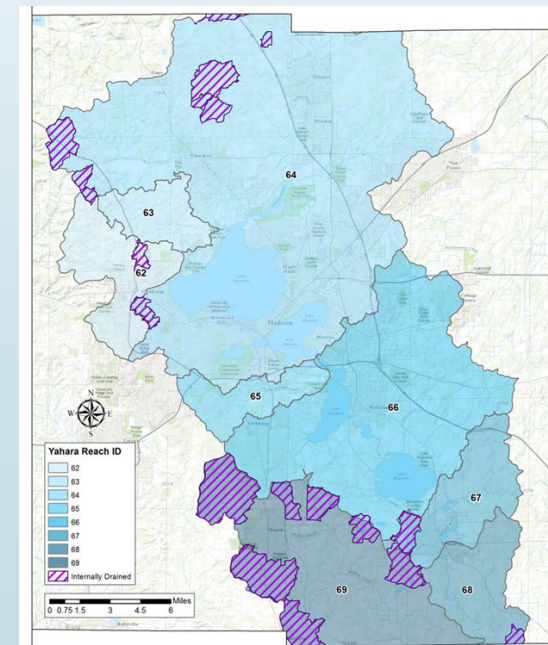
A harvestable buffer, or field buffer, is a strip of grass that can be harvested and utilized while also providing an environmental benefit by capturing sediment, nutrients and pesticides. These buffers can consist of either cool-season (ex. Bromus) or native prairie (ex. Big Blue Stem) grass mixes. Through the Yahara River Watershed Harvestable Buffer Program, landowners have the option of establishing a buffer with a perennial grass cover for a contract period of five, ten or fifteen years.

What are the benefits of this program?

- Payment for buffer installation based upon an annual rental rate of \$400/acre each year for a five year contract, \$425/acre for a ten year contract and \$450/acre for a fifteen year contract. The total contract payment will be made in one payment to the landowner once the buffer is established.
- Reduced phosphorus losses from eroded.
- Forage harvest opportunity.

How can I participate in this program?

The program is available to landowners in the Dane County portion of the Yahara River and the Badfish Creek watersheds as part of a larger effort to reduce phosphorus losses from eroded. Dane County Land and Water Resources Department staff will help participants identify eroded fields that are eligible for the Harvestable Buffer Program and establish cost-share agreements.





Additional Department Activities

- Flooding Initiatives
 - Yahara River Flow Improvement Fund
 - Sampling and planning for sediment removal between Monona and Waubesa
 - Conservation/Stormwater Management Acquisition
 - Pheasant Branch Property
 - New aquatic plant harvesters and equipment
- Suck the Muck
 - Token Creek
- Chlorides
 - Working on strategic planning/updating training materials
- UW contract for mass balance study
- Adaptive Management and Water Quality Trading Service Agreements
 - Dane Iowa
 - Cross Plains