

# Q4

Quarterly

## Report to the Pretrial Subcommittee

In Custody Public Safety Assessment (PSA)

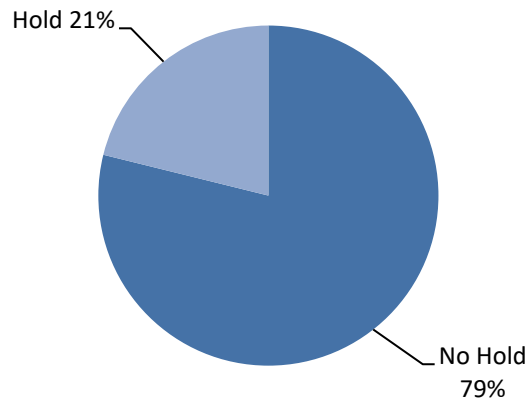


Fourth Quarter Reporting Period:  
May 26, 2017 – December 31, 2018

### Key Take Aways

6,009

PSA's Generated



% of Defendants With At Least One Hold at Time of Arrest

33

Average Age In Custody

### About the Public Safety Assessment

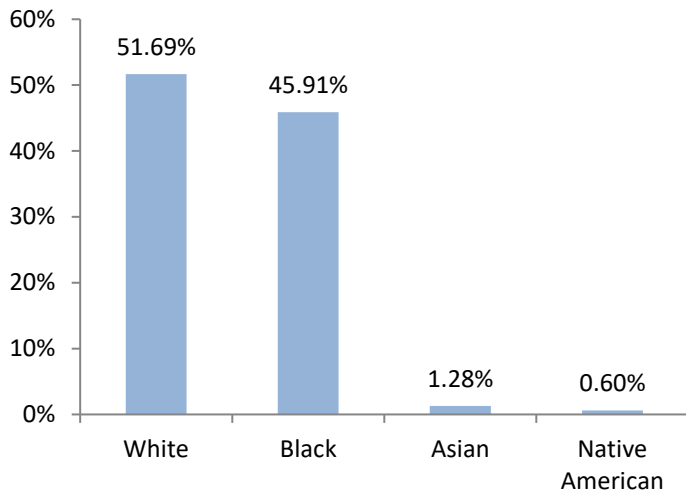
The Public Safety Assessment (PSA) was implemented in Dane County in April 2017 as part of a collaborative assessment project with the Laura and John Arnold Foundation (LJAF) and the Access to Justice Lab (A2J) at Harvard Law School. The PSA was developed by LJAF to assist pre-trial judges gauge the risk a defendant poses by helping to predict the likelihood that an individual will commit a new crime if released before trial, and to predict the likelihood that an individual will fail to return for a future court hearing. The PSA will also flag defendants who present an elevated risk of committing a violent crime.

The following report is derived from PSAs generated during the reporting period. PSAs are relevant for defendants who are ***in custody*** awaiting their initial appearance and does not apply to defendants who have posted bail prior to their initial appearance. All data presented in this report should not be construed to provide any causal claims related to the PSA and subsequent court decisions. An Appendix is attached to provide comprehensive information on quarter and year-to-date statistics.

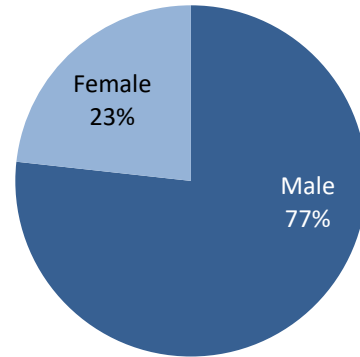
# Demographic Characteristics

For the 6,009 PSAs generated, the average age at arrest is about 33 years old. The majority of defendants (5,602) are non-Hispanic or Latino (~93%), 371 (~6 %) defendants have Hispanic or Latino ethnicity.

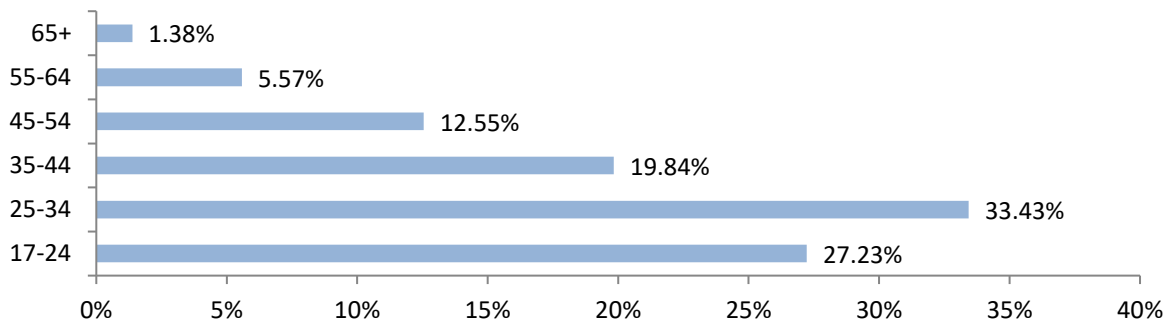
## Race<sup>1</sup>



## Gender



## Age at Arrest

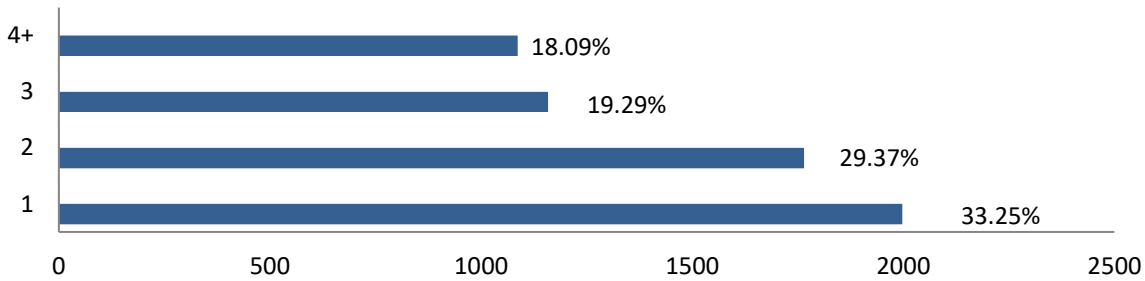


<sup>1</sup> Race is documented as unknown for 48 defendants. A defendant can identify as more than one race.

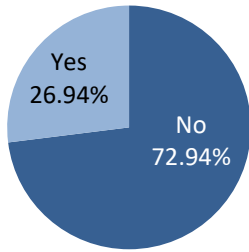
# Charge Information

These measures are for charges from arrest records over the reporting period. PSAs with most serious charge type as a county ordinance or a non-criminal charge are not included in the study, yet are reported below. The maximum number of arrest charges for a defendant is 30. Enhancers to charges are coded as additional charges and are included in the data counts below.

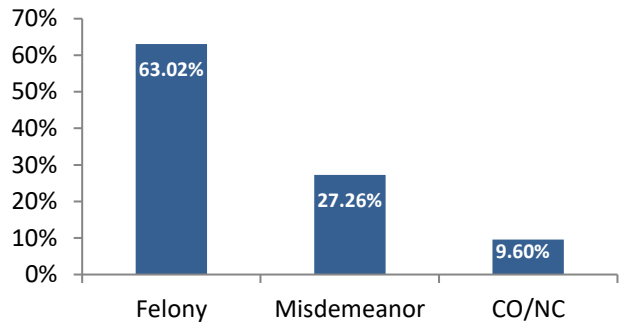
## Number of Charges per Arrest



## Are Any Charges Violent?

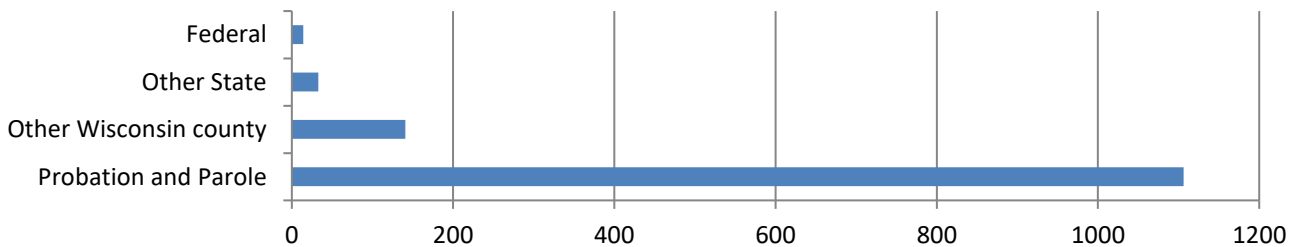


## What is the most serious Charge Type?



## Hold at Arrest

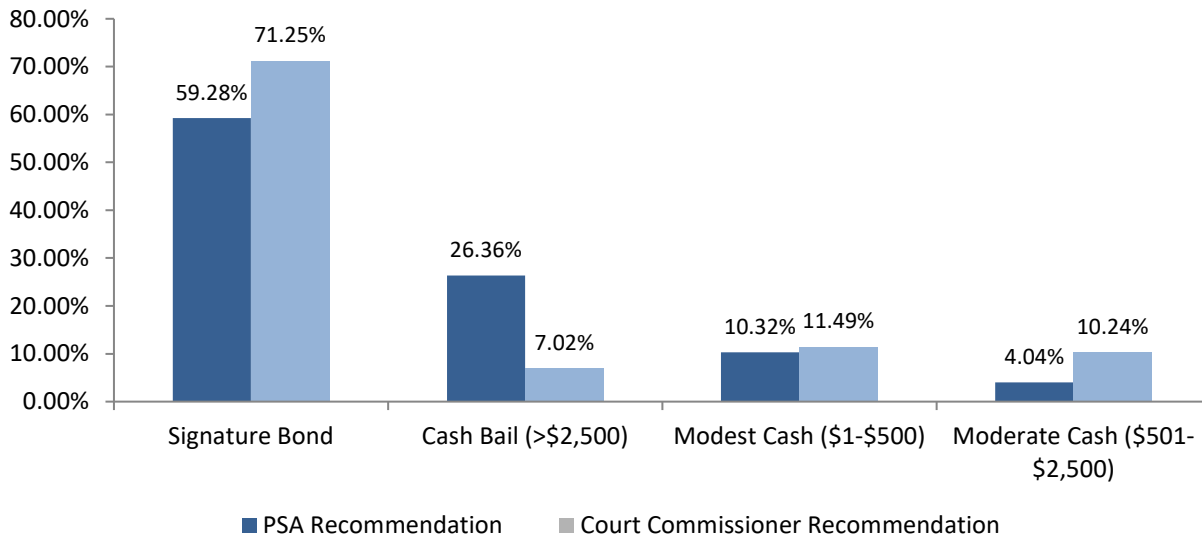
This measure identifies whether a defendant has a hold at the time of arrest. The vast majority of defendants (4,723; 78.5%) had no hold. 1,106 (18.3%) defendants had a probation and/or parole hold, 141 (2.3%) defendants had a hold from another Wisconsin county, while 33 (0.55%) had a hold from another state. 14 (0.24%) defendants had a federal hold. Defendants could have more than one hold at time of arrest. The figure below displays the total number of holds by type for defendants with one or more holds at time of arrest.



# PSA Recommendation & Release Decision by Court Commissioners

*PSA Recommendation* indicates the release recommendation based on a risk factor calculation for each defendant and is designed to assist decision making during initial appearance. This recommendation may or may not be followed and does not provide information on actual release decisions made by the court commissioner. No PSA recommendation was provided for 22 (0.37%) generated PSAs.

*Court Commissioner Release Recommendation* provides actual release decisions made by a court commissioner. The figure compares the calculated PSA Recommendation (n=3,934) for each case that had a court commissioner release decision made. No court commissioner release decision was made for 2,075 (34.53%) cases and these cases are not included in the figure below. The majority of cases with no release recommendation occur when a defendant was released prior to their first court date, charges were reduced below a misdemeanor, or for other reasons.<sup>2</sup> Additional reasons could include dismissed cases or if a defendant has not yet had their initial appearance.



	PSA Recommendation		Court Commissioner Recommendation	
	N	%	N	%
Signature Bond	2332	59.28%	2803	71.25%
Cash Bail (>\$2,500)	1037	26.36%	276	7.02%
Modest Cash (\$1-\$500)	406	10.32%	452	11.49%
Moderate Cash (\$501-\$2,500)	159	4.04%	403	10.24%

<sup>2</sup> Other reasons for cases with no release decision include: a defendant was released to appear, the District Attorney’s office declined to prosecute, a defendant was released without bail, a defendant was referred to the deferred prosecution unit, the individual paid cash bail, or the individual pled guilty at first court date. See Appendix for additional information.

# Appendix

## Study Period to Quarter End and 4<sup>th</sup> Quarter-2018 Comparison

Demographic Characteristics		Study Period to Quarter End (n=6,009)		4 <sup>th</sup> Quarter, 2018 (n=915)	
Measure	Description	N	%	N	%
Age at Arrest	17-24	1,636	27.23%	243	26.56%
	25-34	2,009	33.43%	307	33.55%
	35-44	1,192	19.84%	194	21.20%
	45-54	754	12.55%	106	11.58%
	55-64	335	5.57%	59	6.45%
	65+	83	1.38%	6	0.66%
Gender	Male	4,613	76.77%	715	78.14%
	Female	1,396	23.23%	200	21.86%
Race	White	3,098	51.69%	440	48.09%
	Black	2,752	45.91%	456	49.84%
	Asian	77	1.28%	9	0.98%
	Native American	36	0.60%	3	0.33%
	Alaska Native	0	0.00%	0	0.00%
	Native Hawaiian/Pacific Islander	0	0.00%	0	0.00%
Ethnicity	Hispanic/Latino	371	6.17%	54	5.90%
	Non-Hispanic/Latino	5,617	93.48%	860	93.99%

Charge Information		Study Period to Quarter End (n=6,009)		4 <sup>th</sup> Quarter, 2018 (n=915)	
Measure	Description	N	%	N	%
Number of Charges	1	1,998	33.25%	266	29.07%
	2	1,765	29.37%	277	30.27%
	3	1,159	19.29%	170	18.58%
	4+	1,087	18.09%	202	22.08%
Any Charge Violent	No	4,383	72.94%	663	76.65%
	Yes	1,619	26.94%	252	4.19%

Hold at Arrest Information <sup>3</sup>	Study Period to Quarter End (n=6,009)		4 <sup>th</sup> Quarter, 2018 (n=915)	
	N	%	N	%
No Hold	4,737	78.53%	717	78.45%
Probation and Parole	1,106	18.34%	167	18.27%
Other WI county	141	2.34%	20	2.19%
Other State	33	0.55%	4	0.44%
ICE	10	0.17%	3	0.33%
USMS	4	0.07%	2	0.22%
Other	1	0.02%	1	0.11%

PSA Recommendation	Study Period to Quarter End (n=6,009)		4 <sup>th</sup> Quarter, 2018 (n=915)	
	N	%	N	%
Signature Bond	3,907	65.02%	580	63.39%
Cash Bail (>\$2,500)	1,294	21.53%	207	22.62%
Modest Cash Bail (\$1-\$500)	562	9.35%	82	8.96%
Moderate Cash Bail (\$501-\$2,500)	224	3.73%	45	4.92%
Not Provided (Null)	22	0.37%	1	0.11%

Court Commissioner Release Decision	Study Period to Quarter End (n=6,009)		4 <sup>th</sup> Quarter, 2018 (n=915)	
	N	%	N	%
Signature Bond	2,803	46.65%	423	46.23%
Cash Bail (>\$2,500)	276	4.59%	47	5.14%
Modest Cash Bail (\$1-\$500)	452	7.52%	74	8.09%
Moderate Cash Bail (\$501-\$2,500)	403	6.71%	58	6.34%
Not Provided (Null)	2,075	34.53%	313	34.21%

Reason for Commissioner Not Making a Release Decision	Study Period to Quarter End (n=6,009)		4 <sup>th</sup> Quarter, 2018 (n=915)	
	N	%	N	%
Release Prior to First Court Date	543	9.04%	56	6.12%
Not Part of Study: Reduced Below Misdemeanor	579	9.64%	65	7.10%
Not Part of Study: Other Reason	636	10.58%	127	13.88%
Dismissed	11	0.18%	4	0.44%
Other	29	0.48%	2	0.22%
Pled Guilty	1	0.02%	0	0.00%
Pending; Initial Appearance has not taken place	276	4.59%	59	6.45%
Court Commissioner made release decision	3,934	65.47%	602	65.79%

<sup>3</sup> A defendant can have more than one hold at arrest