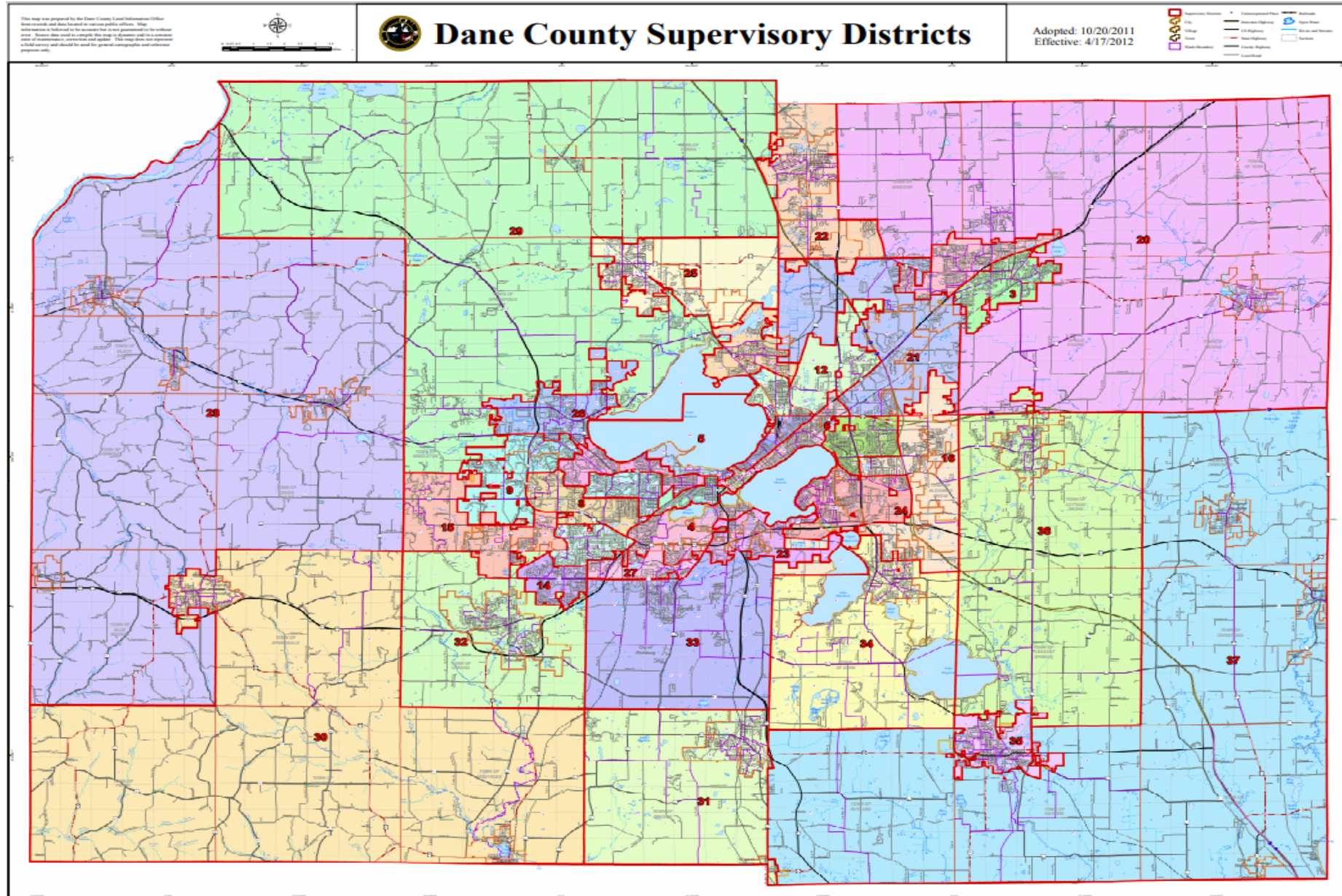




# Redistricting 2021

## Timeline and Background

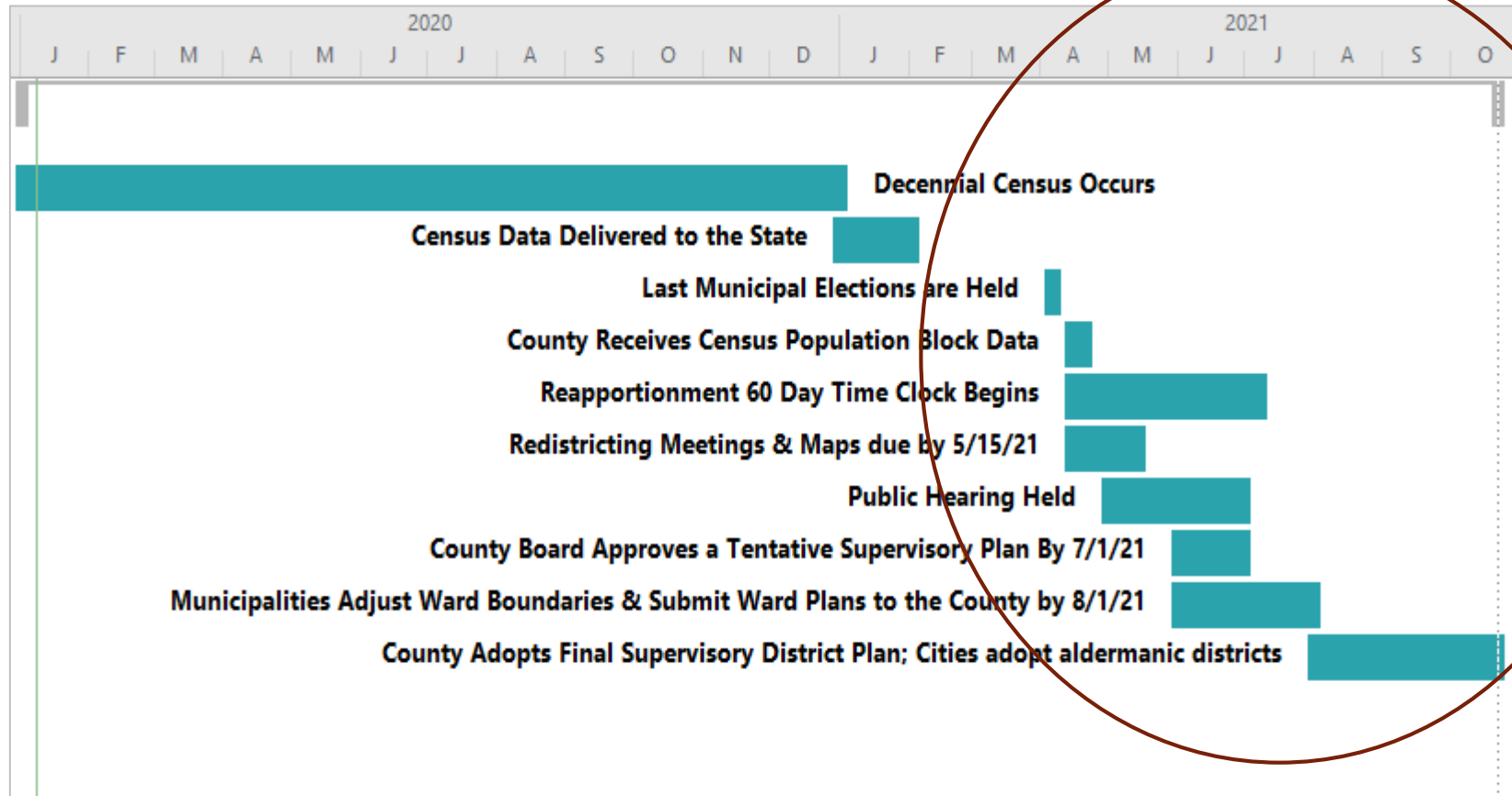
# Current Districts



# Timeline

- ▶ •Mid-April 2021: County receives census population block data and the reapportionment 60-day time clock begins. Within 30 days of census data becoming available, and no later than May 15th, the commission all propose a tentative county supervisory district plan and map, guided by criteria set forth in statute.
- ▶ •April and May: Redistricting issues are considered and resolved by county body responsible; alternative supervisory districts maps are prepared; meetings occur with local municipalities that may be split by districts.
- ▶ •May-June: A public hearing is held on the tentative supervisory district plan and the county body responsible recommends a tentative plan to the County Board.
- ▶ •June 2021: The County Board approves a tentative supervisory plan (required 60 days after receipt of the Census data, but no later than July 1, 2021).
- ▶ •June-July 2021: Municipalities adjust ward boundaries and submit ward plans to the county (no later than August 1 and within 60 days after receipt of the tentative supervisory plan).
- ▶ •October 2021: The county adopts final supervisory district plan and cities adopt aldermanic districts within 60 days of receipt of the municipal ward plans.

# Timeline



Most of the work is concentrated between April 2021-October 2021

# Redistricting Commission

- ▶ Chapter 15.47 Dane County Code of Ordinances
- ▶ Comprised of eleven (11) citizen members who are residents of Dane County
- ▶ The County Clerk and the Planning and Development Department shall provide the commission with such staff assistance as may be required.

# Commission Appointments

- ▶ Appointments shall be made through an application process structured to recruit candidates from broad and diverse sections of the Dane County electorate.
- ▶ From those who apply, the County Board Chair shall appoint an individual who is a resident of the City of Madison, a resident of a town in Dane County, and a resident of a city or village other than the City of Madison, conferring with the Mayor of Madison, DCTA, and DCCVA prior to appointments.
- ▶ The County Board Chair and the County Clerk shall each appoint four (4) additional citizen members from the pool of applicants that meet the eligibility criteria.



# Member Eligibility

- ▶ Must be residents of Dane County
- ▶ May not be a member of the Dane County Board, an employee of Dane County, or a contract consultant
- ▶ May not be a lobbyist registered with the Dane County Board
- ▶ May not hold or have held an official position with a political party or partisan organization within a year of appointment.
- ▶ May not have participated in the State of Wisconsin 2011 redistricting process.
- ▶ Must have a familiarity with maps.

# Impartiality

- ▶ Must be impartial, which includes refraining from engaging in any political party activity or supporting the election or defeat of any candidate or referendum during their tenure on the commission, and at the time of appointment no intent to seek election to the office of county board supervisor in the spring primary and general election immediately following redistricting.
- ▶ Must disclose any potential conflict of interest.



# Responsibility of the County Board

- ▶ The County Board determines the number of districts.
- ▶ Range of number of districts is set by statute based on population
- ▶ Counties with population between 100,000 and 750,000 may have up to 47 members
- ▶ The range is 7 supervisors to 38 supervisors
- ▶ Considerations when choosing the number of districts: population, geography, board organization and functioning, electoral issues, cost of campaigns

# Responsibility of the Executive Committee

- ▶ Formulate county board policy and act as liaison to other governmental units with respect to redistricting and reapportionment. (Chapter 7.13(9), Dane County Code of Ordinances.

# Duties of the Redistricting Commission

- ▶ Within 30 days of census data becoming available, and no later than May 15<sup>th</sup>, the commission shall propose a tentative county supervisory district plan and map, guided by criteria set forth in statute.
- ▶ The mapping process shall include opportunities for the public to submit map proposals for consideration.
- ▶ Develop up to 3 maps for consideration by the County Board
- ▶ If none of the maps submitted by the Commission are adopted by the county board, the maps shall be re-referred to the commission which shall have the opportunity to submit an amended map to the county board for consideration within the time frame set forth in statute.

## Mapping Criteria (in priority order)

- ▶ Each district should represent the same population size, be contiguous, and compact.
- ▶ Minimize the number of municipal boundaries crossed
- ▶ Shall ensure fair and effective representation of the diverse ethnic and racial population in Dane County
- ▶ Take into consideration geography and natural boundaries such as rivers and lakes.
- ▶ Keep intact neighborhoods and communities of interest and association, whether historical, racial, economic, ethnic, religious, or other.
- ▶ Districts shall be drawn without regard to incumbency.

# Questions and Next Steps