

DOA Plat - The Woods at Cathedral Crossing

City of Verona

Plat consists of 158 lots 7 outlots, 51.46 acres.

Parks - OL 1 and 2 - open space to be deeded to the IAT Foundation.
OL 4 dedicated to the public for park purposes.

Parkways - none

Expressways - N/A

Major Highways - CTH M to the north and CTH PB to the east.

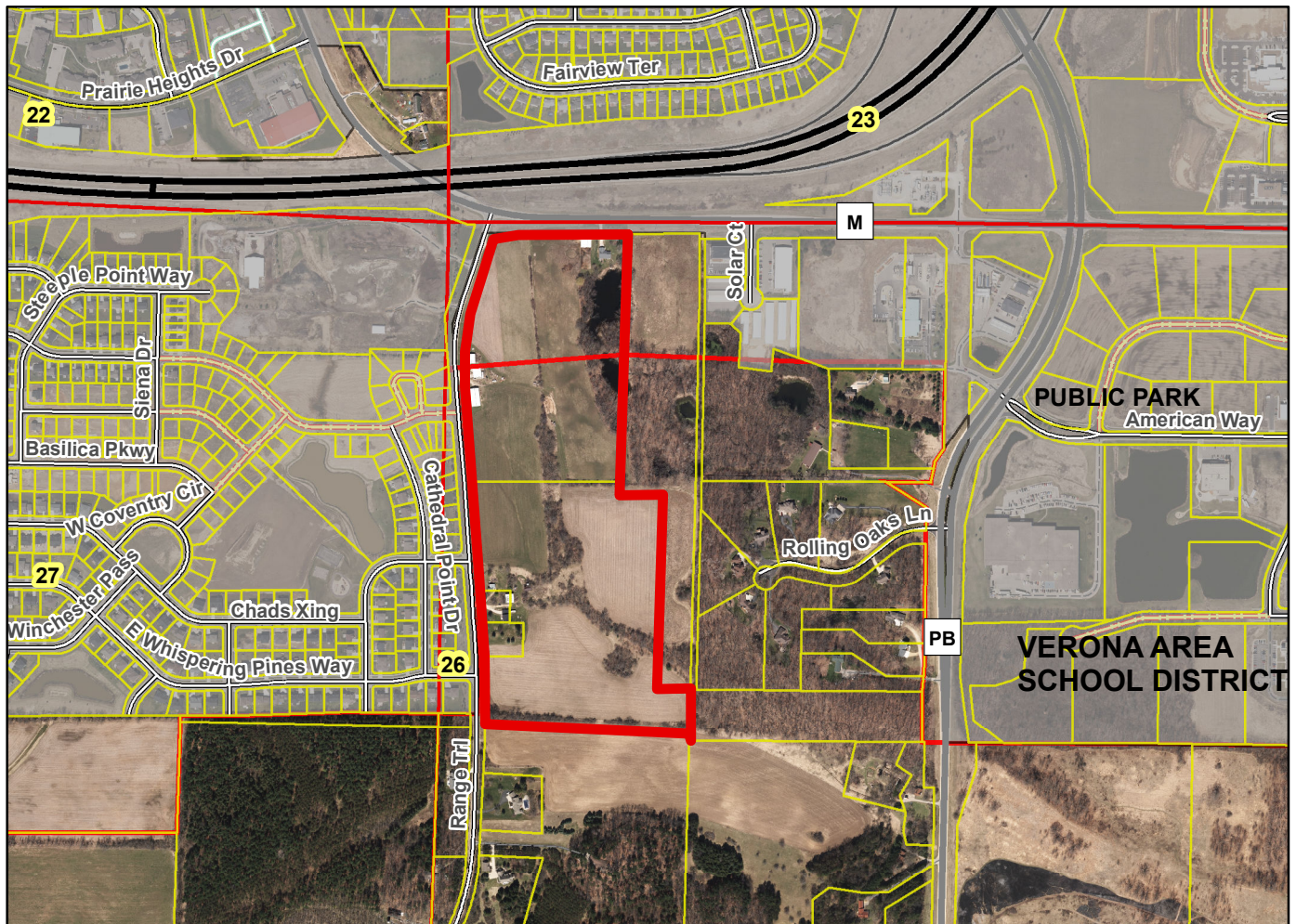
Airports - Dane County Regional.

Drainage Channels - Construction drainage arrows shown.

Schools - established

Other Development - OL 6 dedicated to the city for stormwater management purposes.

Plats of subdivisions located in all other incorporated municipalities shall be submitted to the committee, as provided by section 236.12(2)(b) of the Wis. Stats., for the purpose of determining whether the committee has any objection to the plat. The basis for any objection to any such plat shall be that the plat conflicts with parks, parkways, expressways, major highways, airports, drainage channels, schools or other planned public developments.



Motion to certify with no objections: _____, Second: _____ Vote: _____