



Dairy and Livestock program

Maria Jose Fuenzalida, PhD
Dairy and Livestock Educator
Bilingual Spanish/English
Dane County Extension

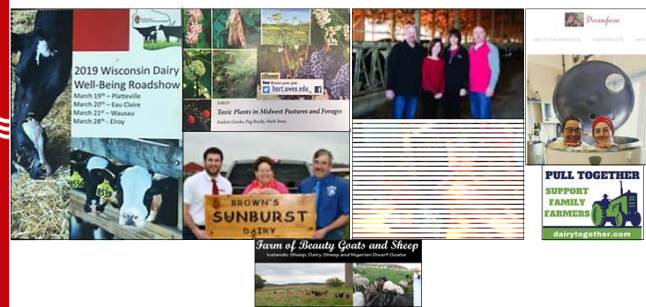
Agenda

- 1) Beginning at Dane County Extension
- 2) Current work at Dane County Extension
- 3) Future work and programs
- 4) Questions

Beginning at Dane County Extension

Focus on assessing community needs and meeting other ag agents

Focus on assessing community needs



Programming and collaboration



Need to Talk?
24 Hour/Day Resources
• Text "HOPELINE" to 741741
• Solstice House: 1-800-244-5077
• NW Connections Crisis: 1-888-552-6642
• National Suicide Hotline: 1-800-273-8255

Current work at Dane County Extension during COVID-19

Focus on programming and collaboration

COVID-19 related programming

Ivermectin products for animals are not intended for COVID-19 treatment

↓
Factsheet
YouTube Channel
Hoard's dairyman: Don't treat yourself

Strategies to reduce milk production

↓
Factsheet
Facebook
One-day webinar
Three-part webinar (on-going)

COVID-19 related programming in Spanish

Guidance for Hispanic farm workers

↓
YouTube Channel
Facebook
Extension website

Options of medical assistance for Hispanic farmworkers

↓
Factsheet
YouTube Channel
Facebook
Extension website

Farm management programming

Becoming the employer of choice

↓
Farm culture business – factsheet in Spanish and English
Extension websites

QPR online training for agriculture professionals

↓
UW Division of Extension, Brown and Dane County
Extension websites

Dairy and Livestock programming

Data management

↓
Three-part webinar
Extension websites
Facebook

Hispanic dairy workers training

↓
Survey to Dane County producer
Currently working with two producers

Dairy and Livestock programming

One-on-one data assessment

↓
In collaboration with nearby county educators and Crop and Soils educator for Dane County
Four farmers enrolled

Needs assessment survey

↓
Conducted. Gathering information for analysis.
Response rate of 318/978 = 32.5%

Future work and programs

Focus on addressing Dane County producer's needs

