

# Jail Project Review Committee (PRC) Design Update



## Dane County Jail Consolidation Project

South Tower Addition &  
Public Safety Building Renovation

May 19, 2020  
DCPW Project #318003

Mead  
& Hunt

Potter  
Lawson  
Success by Design

HR

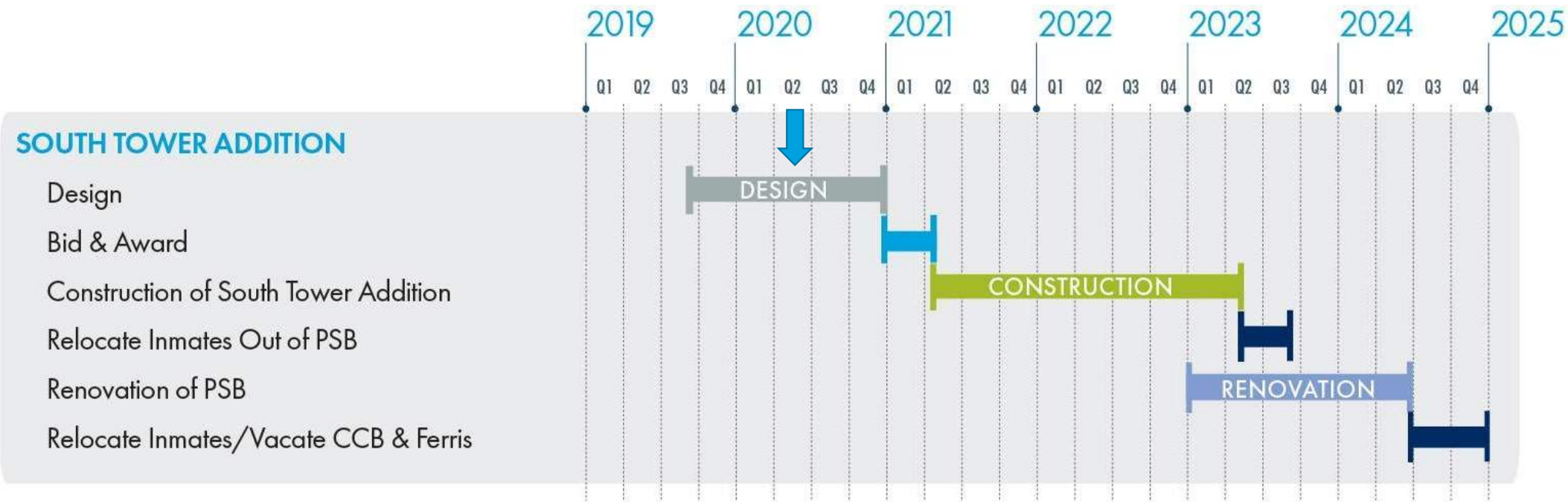
Gilbane

# AGENDA

- Introductions
- Schedule
- Progress
- City Approval
- Design Updates
- Next Steps
- Questions



# Project Schedule – Design Development



## Project Update – Design Development Progress

- Completing Design Development Design Phase in May
- Continue to update Cost Estimates and Developing Cost Reductions & Alternates
- Commissioning Provider (CxP) Selected - AEI
- Working with Pauly Jail Building - Detention Equipment Contractor (DEC), Accurate Controls - Security Electronics Contractor (SEC), and SteelCell of NA - Prefabricated Steel Cell Vendor and other DEC Vendors in Design Assist Process
- Stormwater Management – Implementing a Blue Roof & Green Roof Solution
- Focus On Energy (FOE) Incentives (targeting \$100K)

## Project Update – Design Development Progress

- Weekly Project Design Meetings
- Continuing City Approval & Community Engagement Process
- Developing Fixtures, Furniture and Equipment (FF&E) list and report.
- Consultant hired to complete design of food service and laundry areas.
- Issued Early Design Package (5/7) to relocate the Courthouse Electrical Service Vault from under the ramp to under the sidewalk (Bids due 6/16)
- Courthouse and PSB properties/parcels combined into one single property (CSM approved)

# City Approval & Community Engagement

## City of Madison Review & Approval Process

- Public (Postcard) / CNI Bassett District Meeting was held in December. Additional neighborhood meetings will be held with CNI Bassett District Committee as needed.
- Urban Design Commission (UDC) Meeting on Exterior Design was held in December.
- UDC GDP/SIP Submittal is May 20, 2020
- UDC GDP/SIP Meeting is July 15, 2020
- City Plan Commission target is July 27, 2020
- City Final Approval target is October/November 2020

# Exterior Design

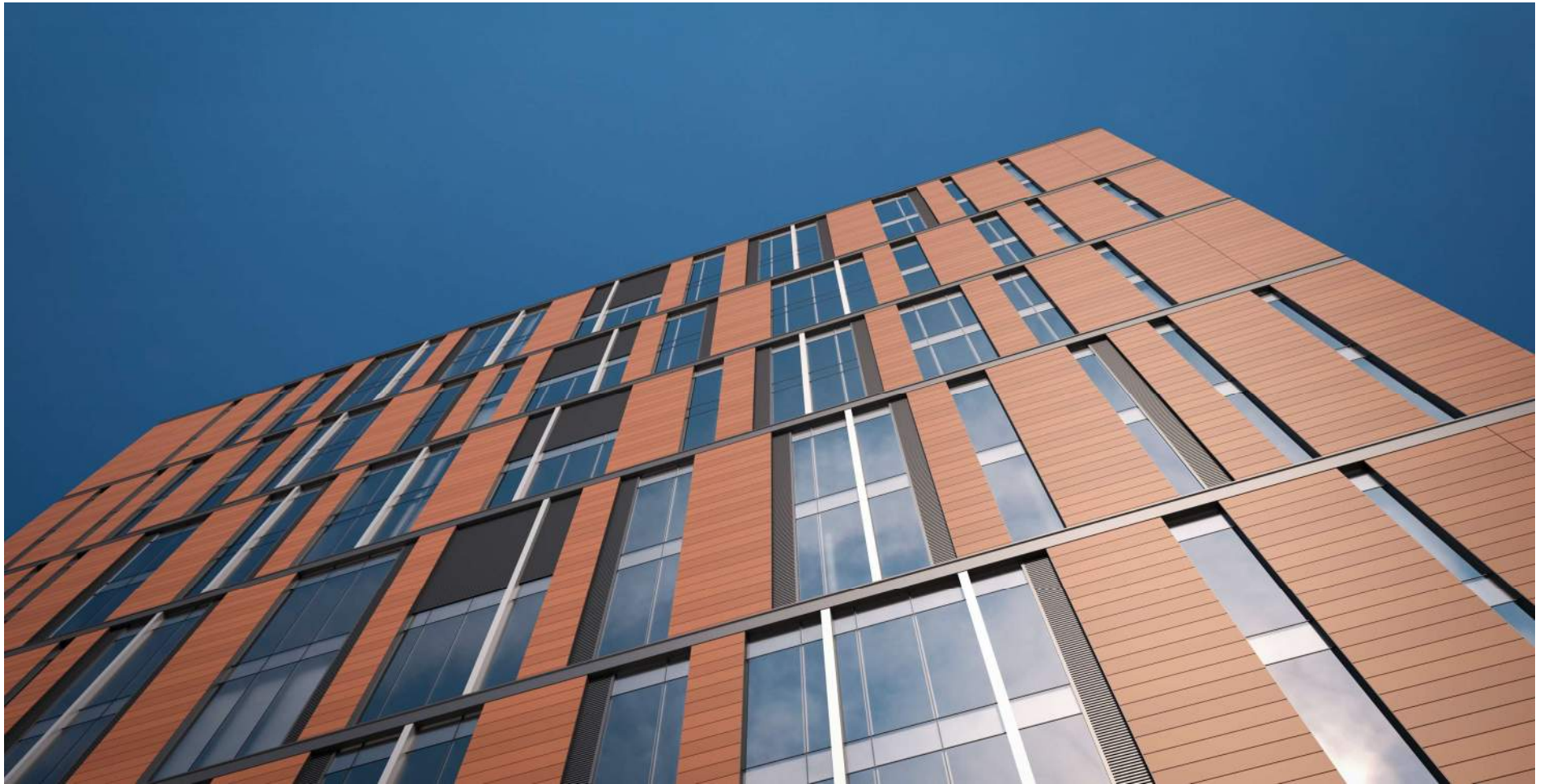
## Project Update: View from Wilson Street



## Project Update: South Façade Elevation



## Project Update: Façade Detail



## Project Update: View from John Nolen Drive

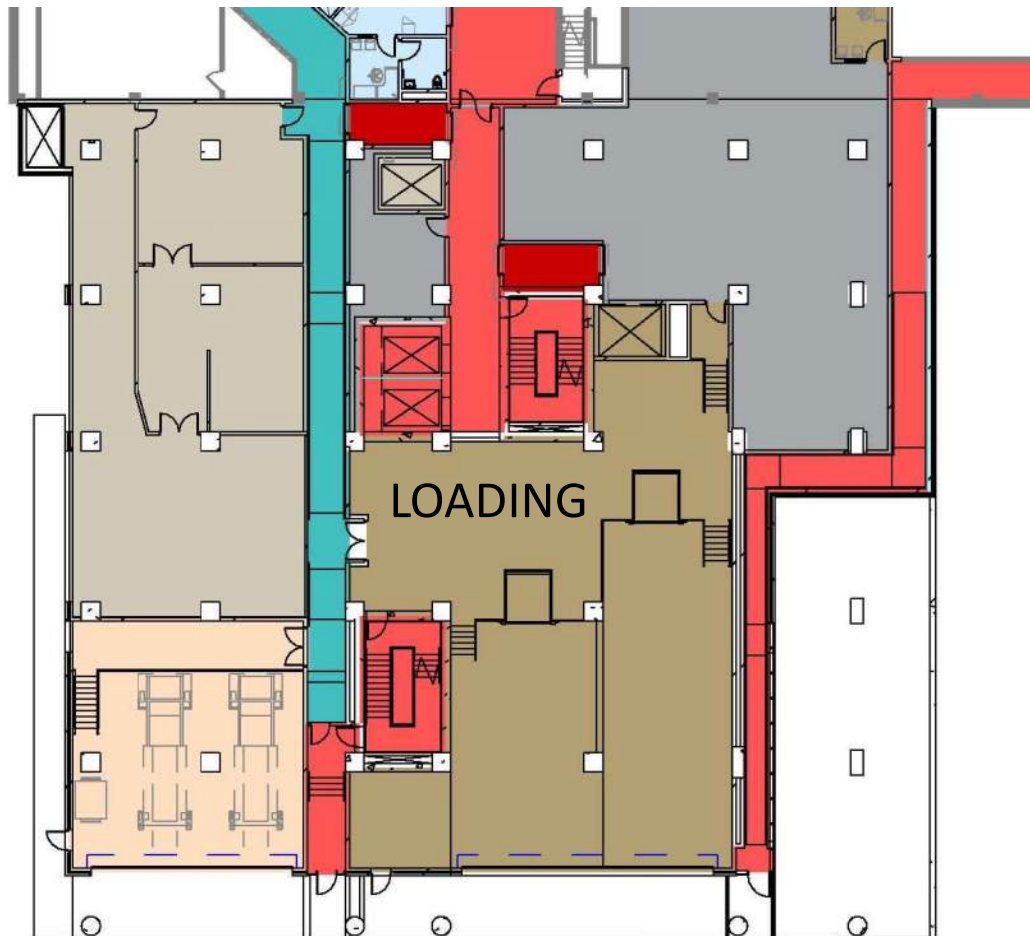


## Site & Exterior Design



# Loading Dock Level

## Project Update: Loading



## Project Update: Loading – Street View



# Interior Design

## BIOPHILIC DESIGN



## “IT IS INHERENT IN HUMANS TO HAVE A CONNECTION & NEED FOR THE NATURAL WORLD”

- Biophilic design seeks to provide that connection to nature that humans crave in the built environment
- How to implement:
  - View of nature elements from within the interior environment
  - Nature-inspired textures, shapes, and patterns
  - Varying light intensities over time that simulate the nature cycle of day and night through the use of adjustable interior lighting and daylighting

## COLOR THEORY

Color focus  
is here

### COLOR

### PROMOTES

Violet

INSPIRATION, EMPATHY, SELF RESPECT, TRANQUILITY

Blue

CALMNESS, RELAXATION, HONESTY, TRUTH, CREATIVITY

Aqua

HEALING, SHARING, FRIENDSHIP, RESILIENCE, HARMONY

Green

BALANCE, HARMONY, SELF-ACCEPTANCE, RENEWAL

Yellow

UPLIFTING, MENTAL STIMULATION, SELF-CONFIDENCE, CONTENTMENT

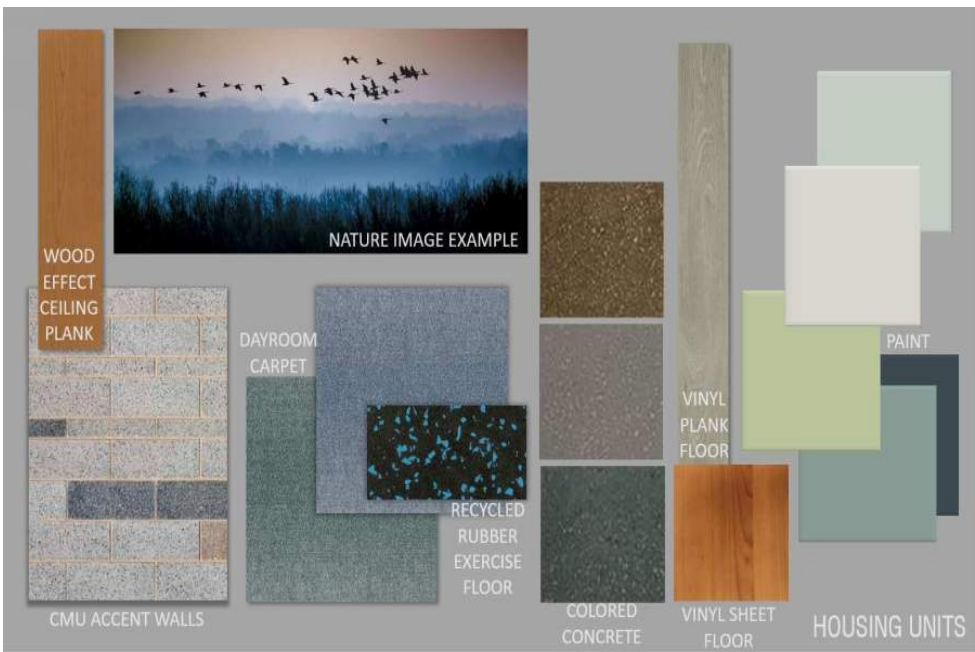
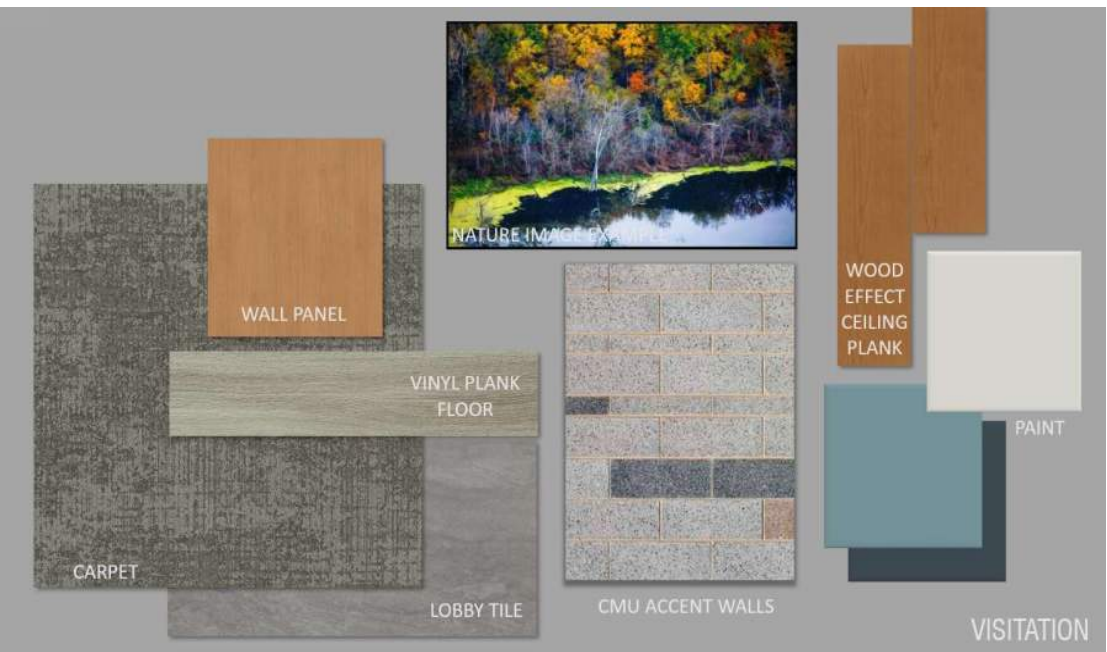
Orange

SELF-ESTEEM, OPTIMISM, HAPPINESS, INNER STRENGTH

Red

ENERGY, STRENGTH, MOTIVATION, CONFIDENCE, COURAGE

# Project Update



# Design Plans

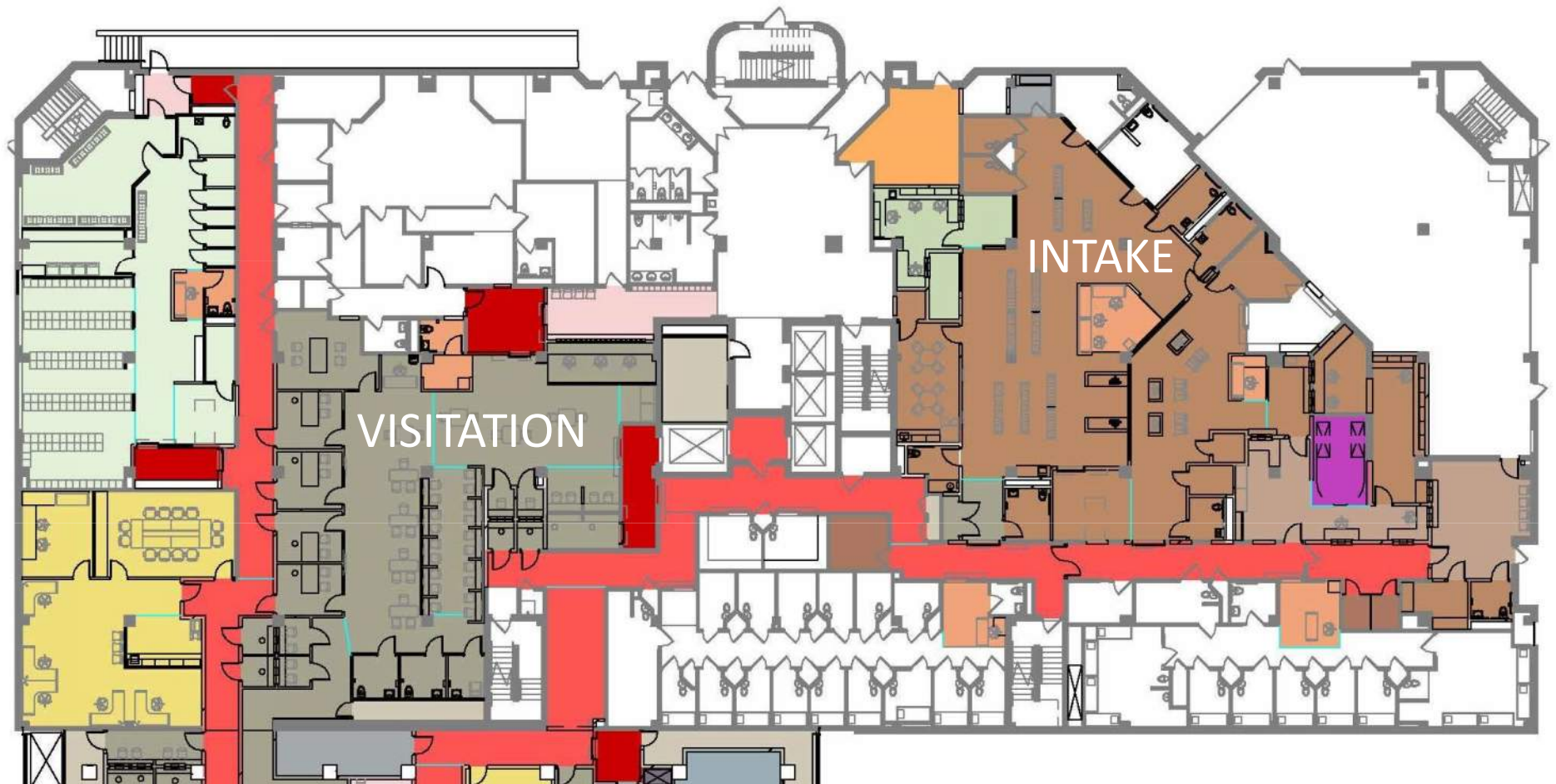
# Food Service & Laundry

## Project Update: Basement Floor Plan – Foodservice + Laundry



# First Floor

## Project Update: First Floor





# Visitation Finishes



CMU ACCENT WALLS



## Project Update: Visitation



## Project Update: Visitation



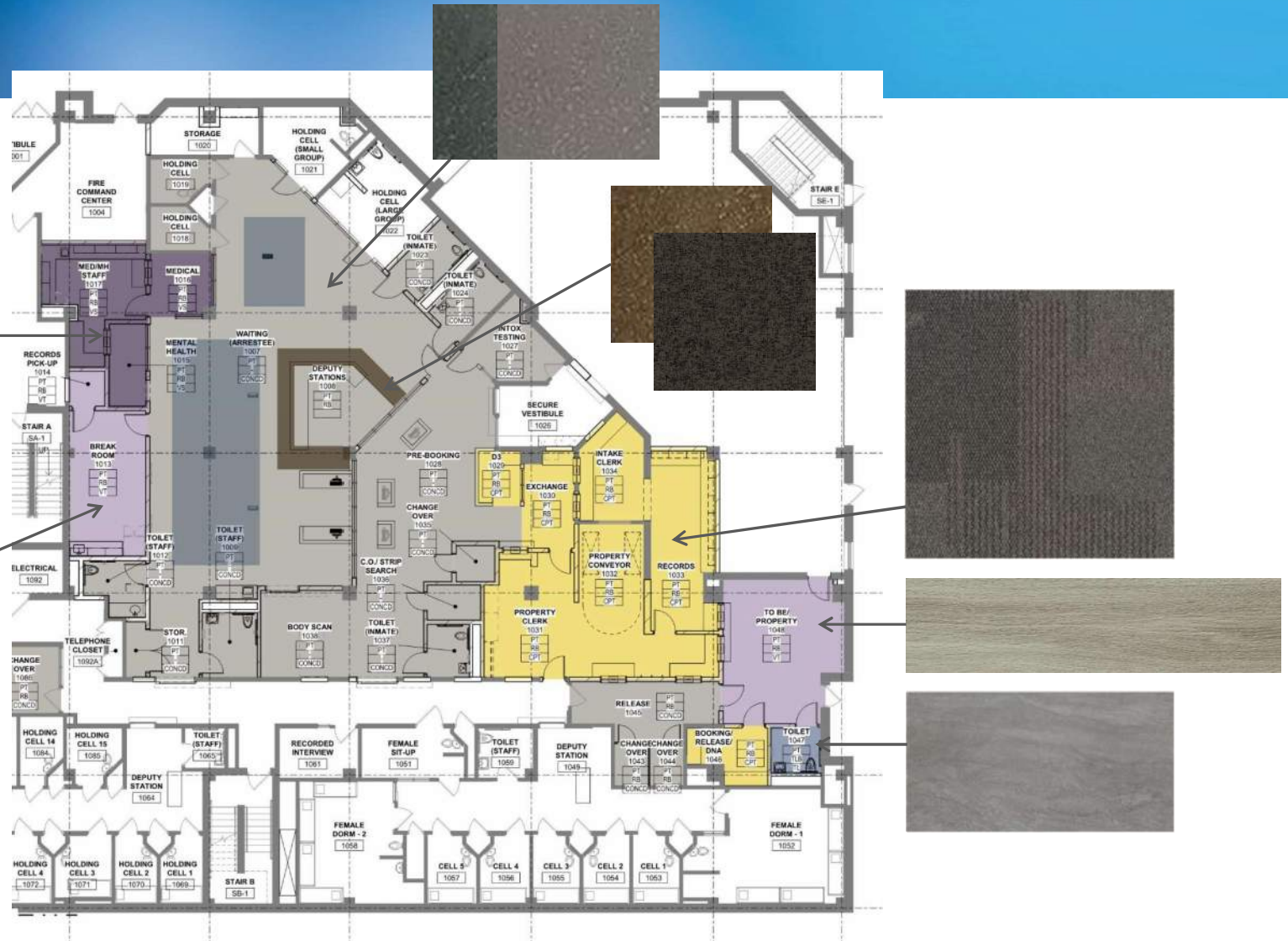
## Project Update: Visitation



## Project Update: Visitation (Video)



## Intake Finishes



# Intake Finishes



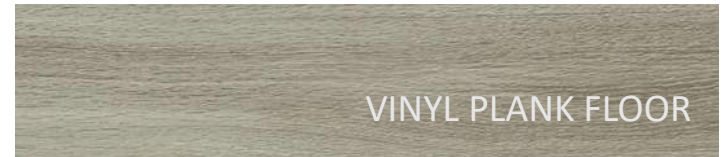
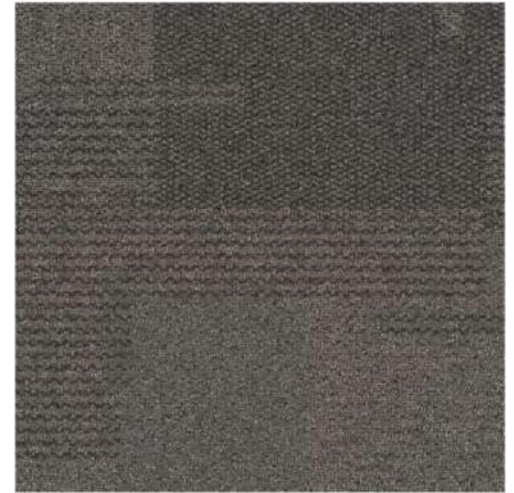
CMU ACCENT WALL



SHEET VINYL  
FLOOR



PAINT



VINYL PLANK FLOOR



COLORED CONCRETE FLOOR

# Medical & Mental Health

## Project Update: 4<sup>th</sup> Floor Male Medical & Mental Health

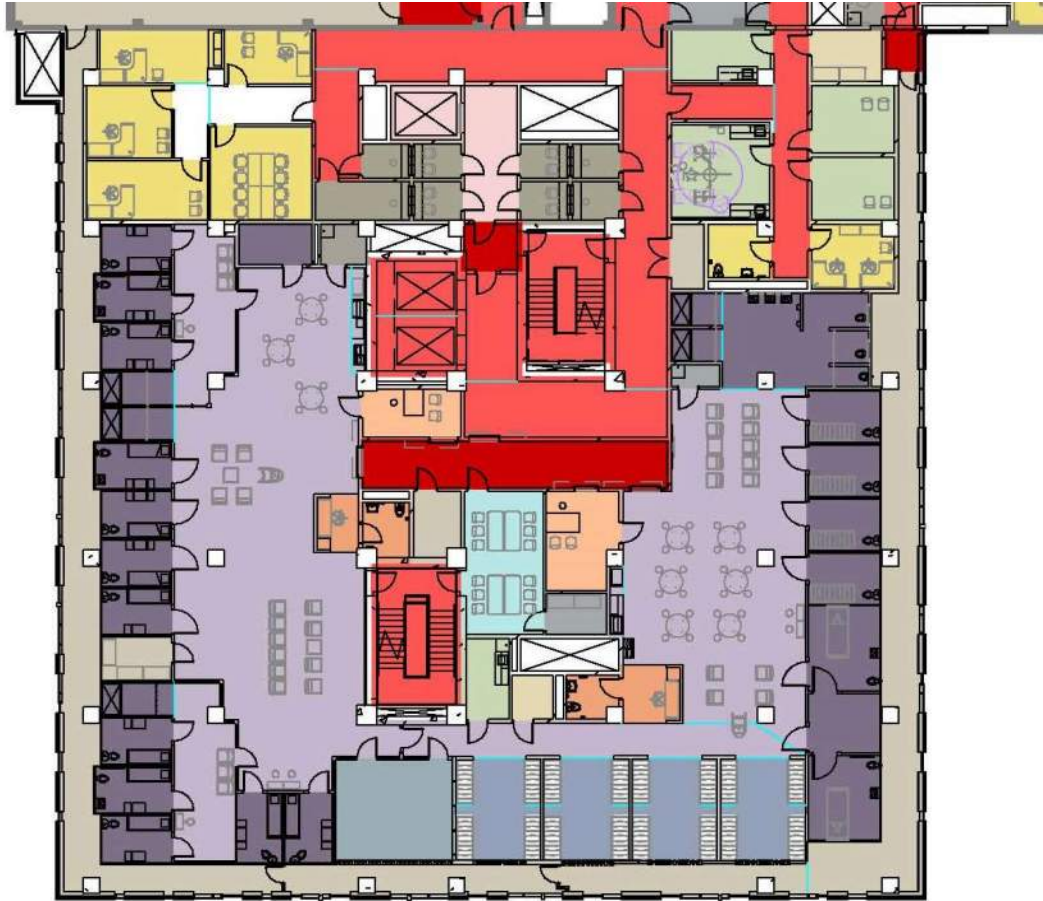


# Medical & Mental Health Finishes





## Project Update: 4<sup>th</sup> Floor Female Medical & Mental Health



© 2011 Pearson Education, Inc. or its affiliate(s). All rights reserved. This material is intended solely for the personal use of the individual user and is not to be disseminated broadly.



# Housing Unit Finishes



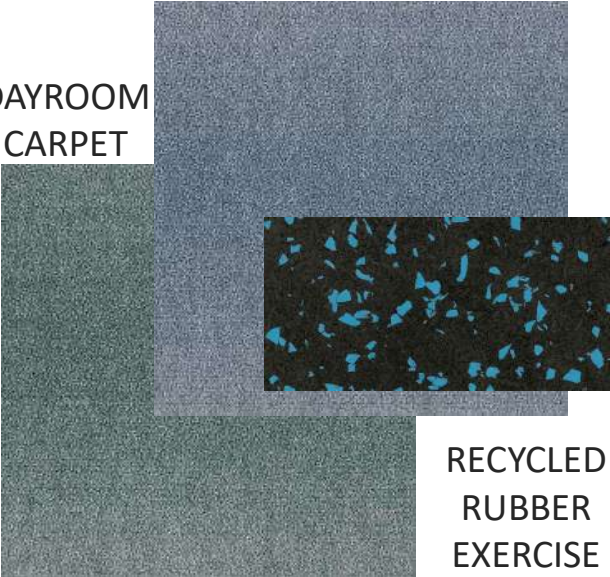
NATURE IMAGE EXAMPLE

WOOD  
EFFECT  
CEILING  
PLANK

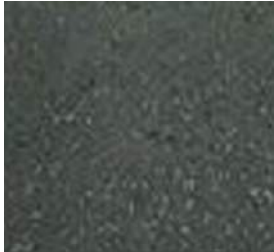
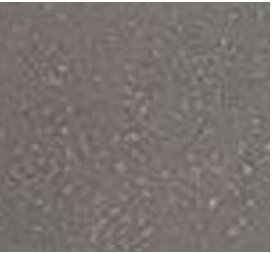
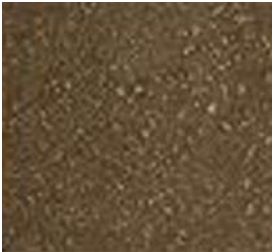


CMU ACCENT WALLS

DAYROOM  
CARPET



RECYCLED  
RUBBER  
EXERCISE  
FLOOR



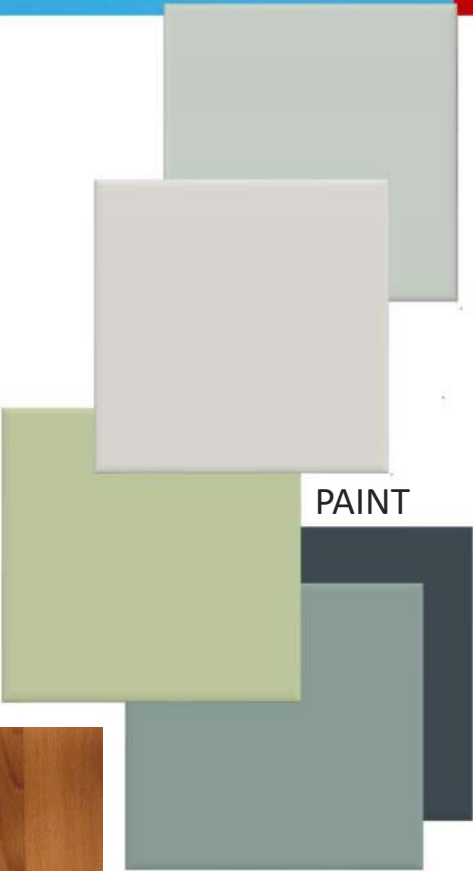
COLORED  
CONCRETE



VINYL  
PLANK  
FLOOR



VINYL SHEET  
FLOOR



PAINT

## Project Update: 4<sup>th</sup> Floor Male Medical & Mental Health



## Project Update: 4<sup>th</sup> Floor Male Medical & Mental Health



## Project Update: 4<sup>th</sup> Floor Female Medical (Video)



Mead  
& Hunt  
H&H

Potter  
Lawson

Success by Design

## Project Update: 4<sup>th</sup> Floor Male Mental Health (Video)

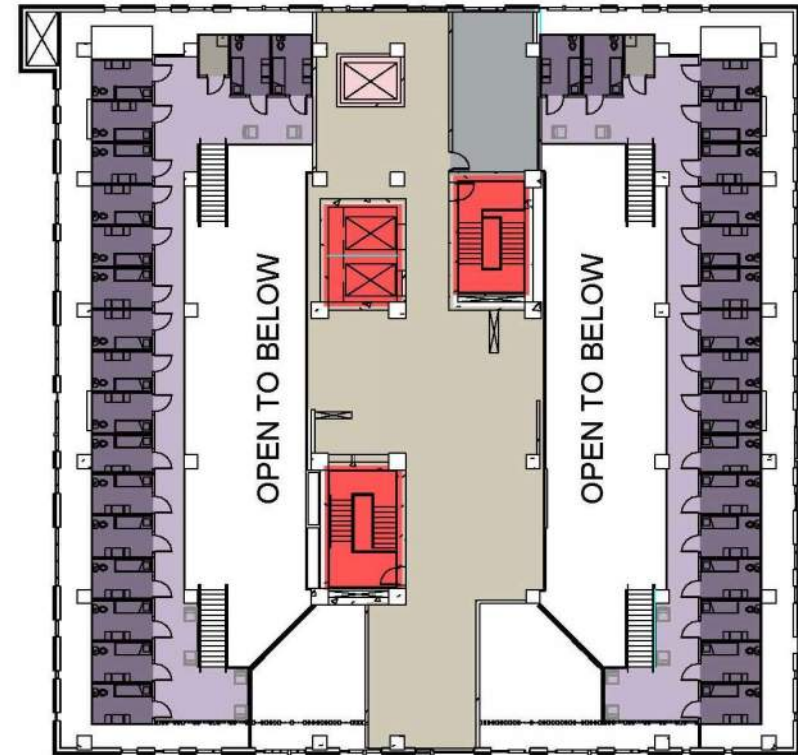
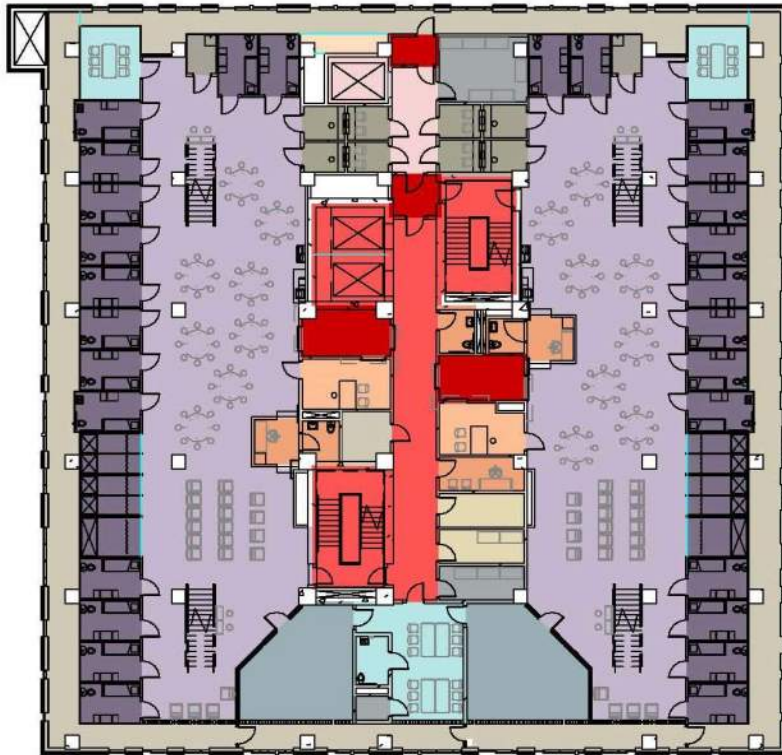


## Project Update: 4<sup>th</sup> Floor Male Acute Medical (Video)

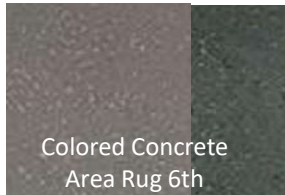
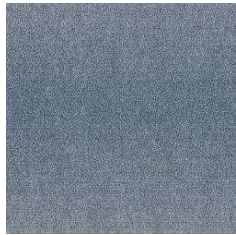


# Housing Floors

## Project Update: 6<sup>th</sup>, 7<sup>th</sup>, 8<sup>th</sup> Housing Floors



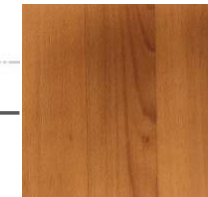
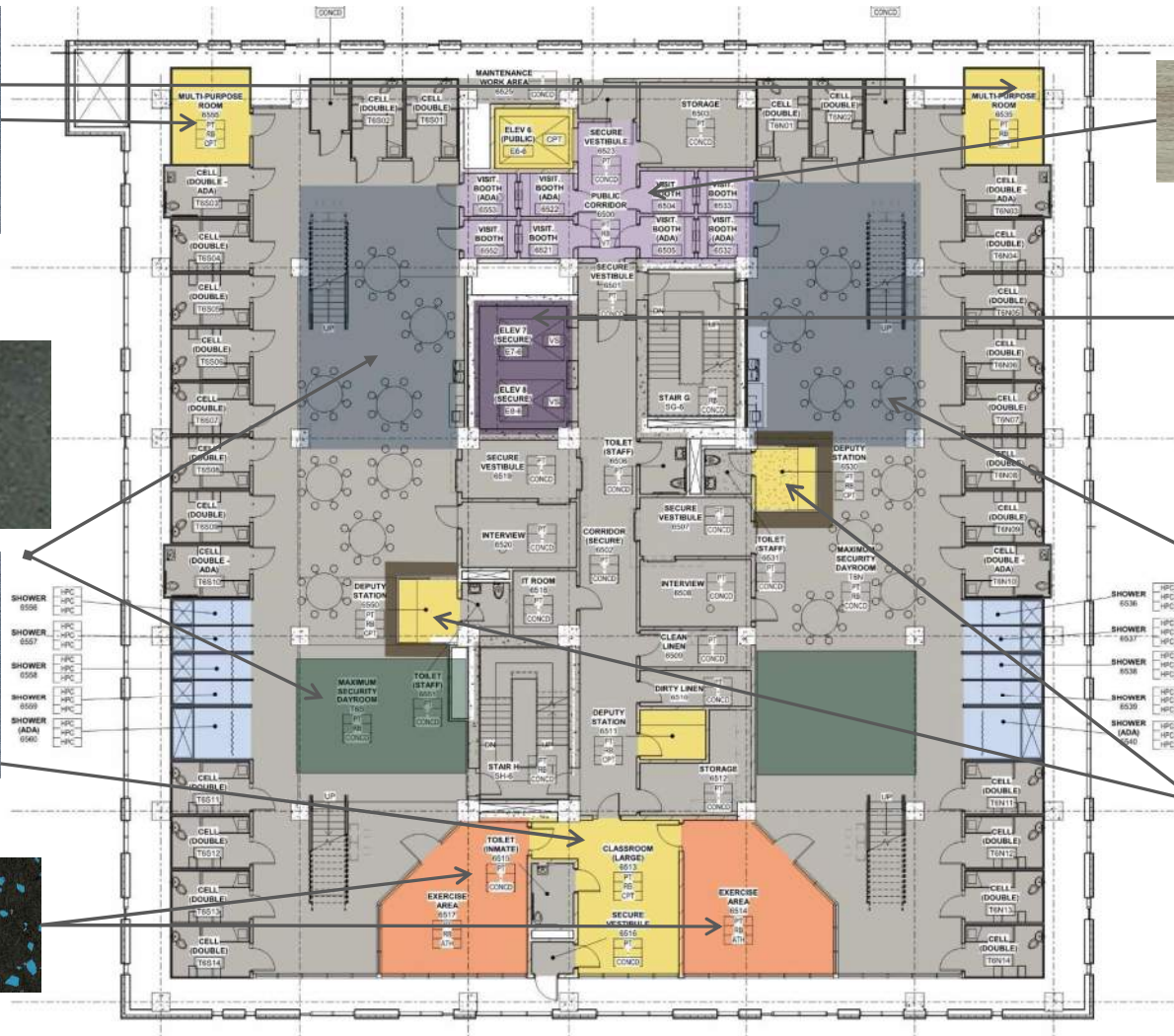
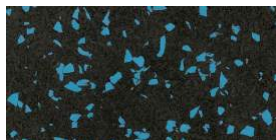
# Housing Unit Finishes



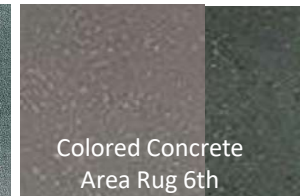
Colored Concrete  
Area Rug 6th



Carpet Area  
Rug-7th & 8th



Carpet Area  
Rug-7th & 8th



Colored Concrete  
Area Rug 6th



# Housing Unit Finishes

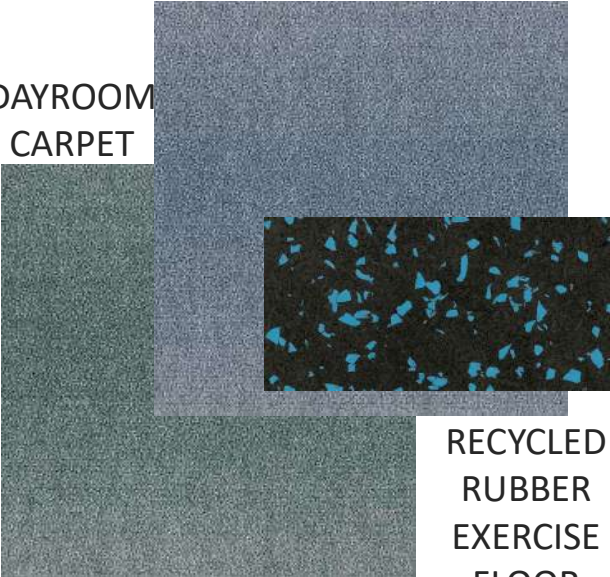


WOOD  
EFFECT  
CEILING  
PLANK

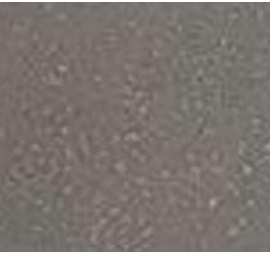
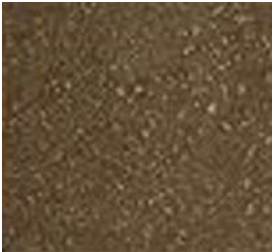


CMU ACCENT WALLS

DAYROOM  
CARPET



RECYCLED  
RUBBER  
EXERCISE  
FLOOR



COLORED  
CONCRETE



VINYL  
PLANK  
FLOOR



VINYL SHEET  
FLOOR



PAINT

# Housing Unit



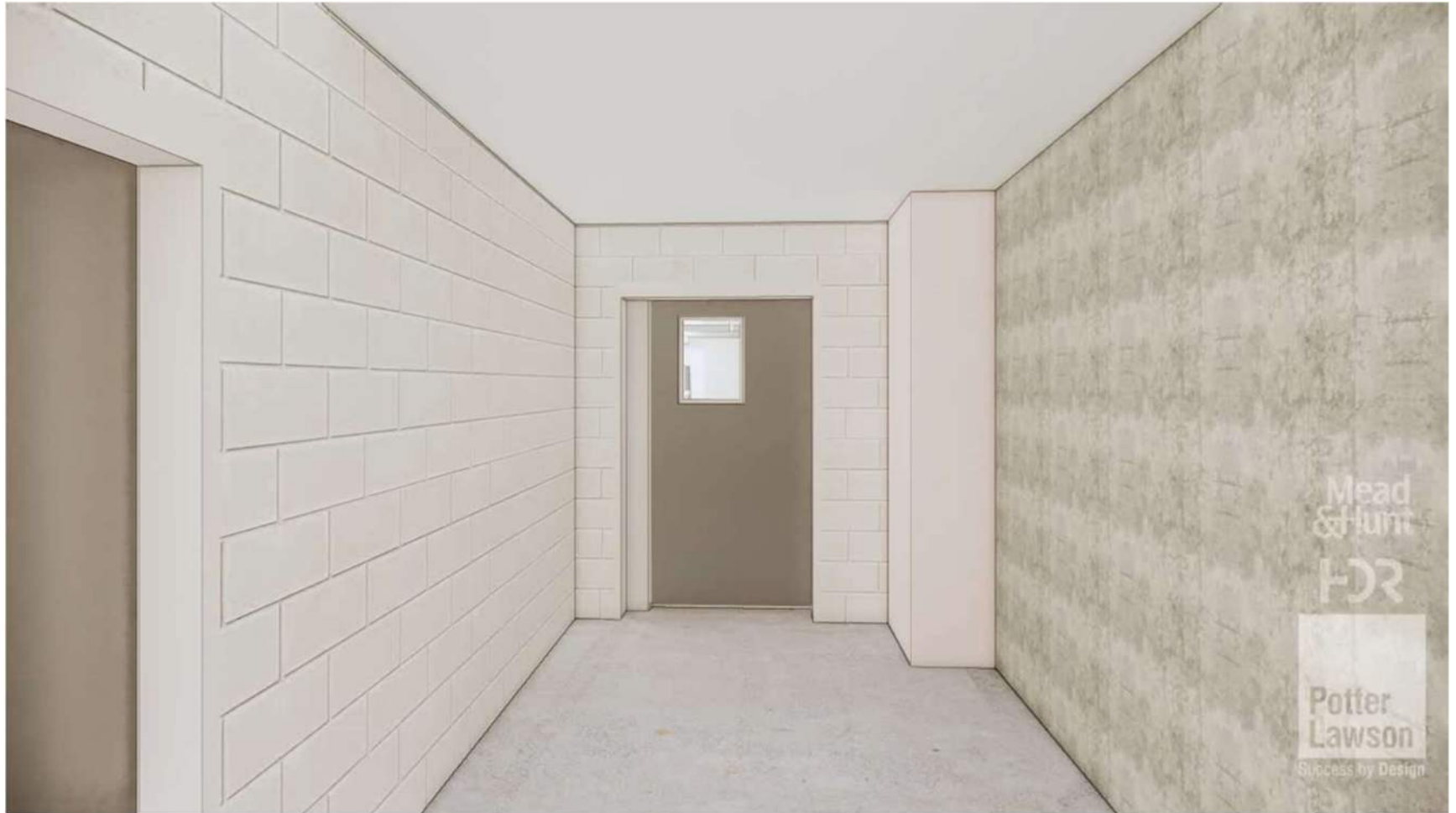
# Housing Unit



## Project Update: 6<sup>th</sup>, 7<sup>th</sup>, 8<sup>th</sup> Housing Floors (Video)

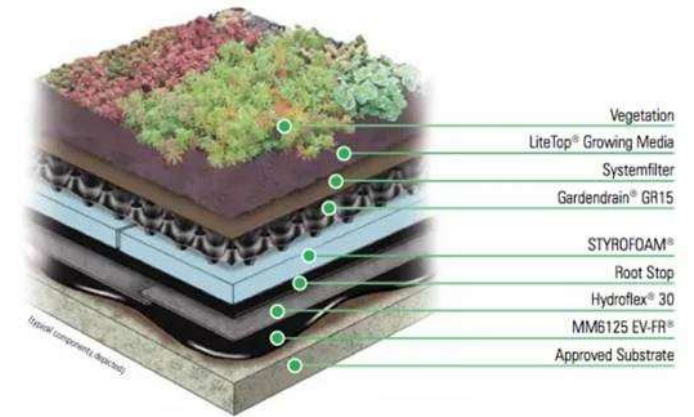
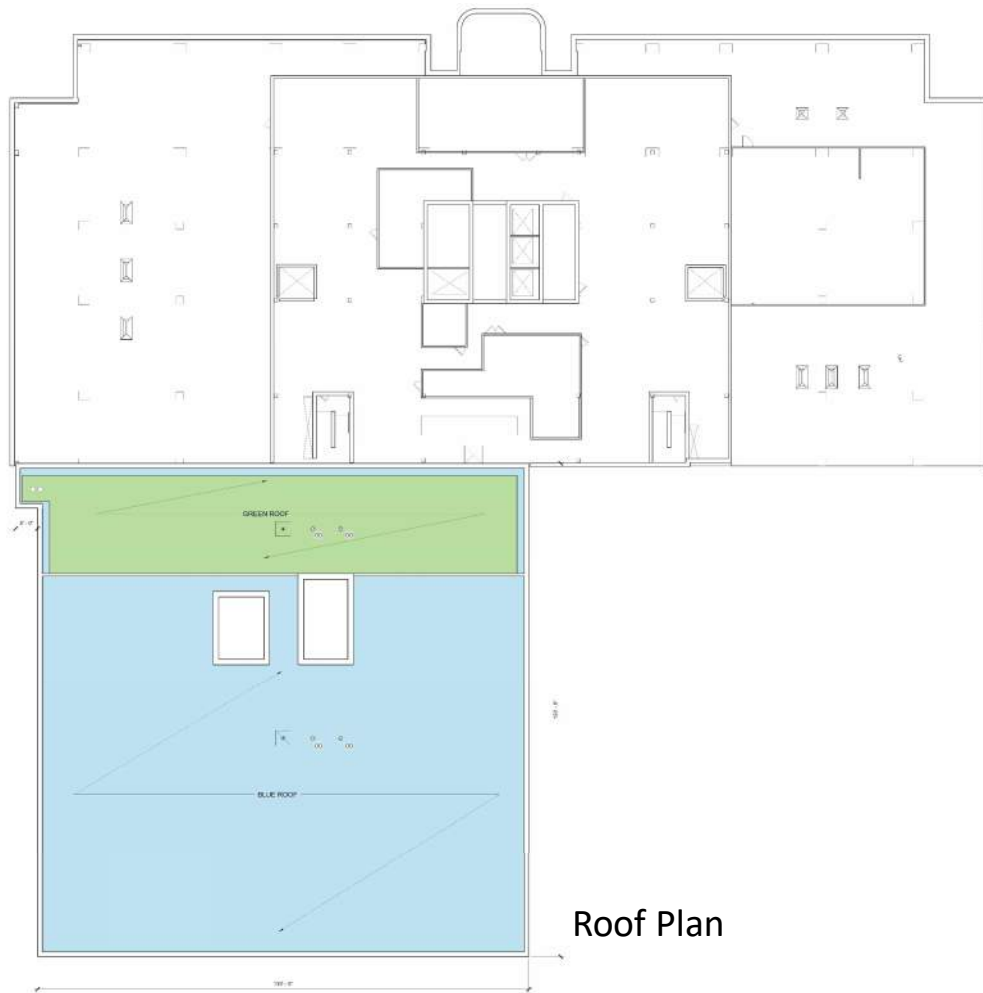


## Project Update: 6<sup>th</sup>, 7<sup>th</sup>, 8<sup>th</sup> Housing Floors (Video)

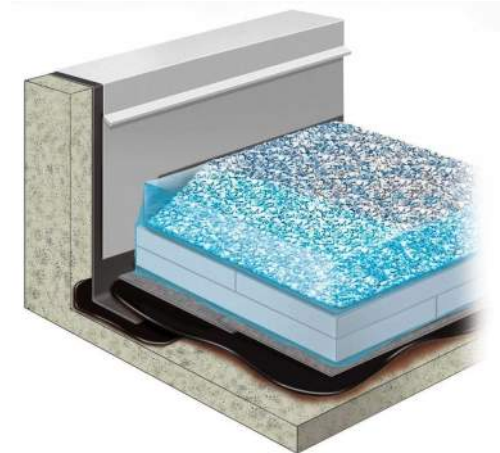


# Stormwater Management- Blue Roof / Green Roof

# Project Update – Green Roof / Blue Roof



Green Roof



Blue Roof

## Project Update – Sustainability

- No LEED Certification - Incorporating design principles to improve building performance and interior environment for building occupants
- Focus On Energy Program (Energy Performance)
- Blue Roof & Green Roof for Stormwater Management
- Water Efficient Fixtures
- LED Lighting
- Regional Materials
- Recycled Content in Materials
- Indoor Air Quality
- Daylighting
- Acoustical Performance
- Construction Waste Management

## Next Design Steps 2020

June

Review Design Development  
Complete DD Cost Estimate  
Continue to Look for Cost Reductions & Alternates  
County & DCSO Sign Off on Design Development

July to Dec

Complete Construction Documents for Bidding  
CNI Bassett District Neighborhood Meeting  
Complete City Approval Process  
Complete Bid, Award and Construction of Courthouse  
Vault Relocation (Site Electrical Service)

## Next Steps 2021 to 2024 (Four Years)

Jan to Mar 2021	Bid & Award Project
Apr 2021 to Mar 2023	South Tower Construction (2 Years)
Apr 2023 to Jul 2023	Relocate Inmates out of PSB (4 Months)
Jan 2023 to Jun 2024	PSB Renovation Construction (1 ½ Years)
Jul 2024 to Dec 2024	Relocate Inmates to South Tower & Vacate CCB and Ferris Center (6 Months)

**Questions?**

**Thank you.**