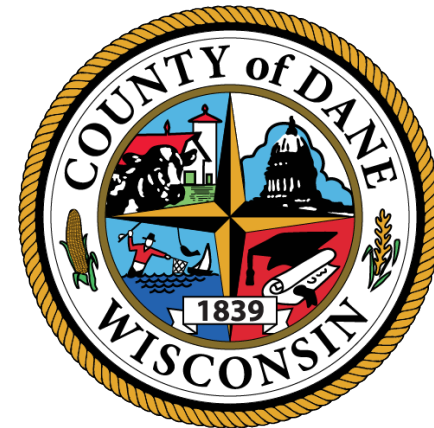




Department of Waste & Renewables

2021 Budget Highlights
September 10, 2020





[Explore the Dane County Landfill](#)



About Us

Operate as an **enterprise fund** to provide environmentally-sound and sustainable waste management and renewable energy solutions for current Dane County residents and future generations.

What we do:

- 1 Active Landfill & 1 Closed Landfill
 - Accepts 250,000 tons/yr
- 2 Landfill Gas Facilities
 - Electricity (Verona)
 - RNG (Rodefald)
- C&D Recycling Facility
- Clean Sweep
- Community Outreach & Education
- Various Recycling Programs
 - Logs, Tires, Shingles, Bikes



2021 Capital Budget

- ~\$3.5 million
- Last horizontal cell construction occurring this year. **No major cell construction or closure in 2021.**
- Operational changes are extending the life of equipment. **No major equipment purchases for landfill in 2021.**
- Office remodel to centralize W&R staff near the landfill.
- Equipment purchases requested for the RNG plant to increase efficiencies and reduce operating costs.



Operating Budget

- RNG Plant/Methane:
 - \$11.3 million in expenses
 - \$14.1 million in revenue
 - Operations transitioning to County
- Landfill/C&D
 - \$12.5 million in revenues & expenses
 - Flat tonnage projections
 - Decrease in C&D tonnages
 - \$2 tipping fee increase (4%) – first increase in 7 years
- Other Impacts of COVID:
 - Increased admin fees for credit card transactions
 - Virtual education (less travel)

2021 Challenges

- As an essential service we have to continue to protect our staff who are critical to providing uninterrupted waste management services to our communities.



Source: timesofisrael.com

- Uncertainty: slower growth or decline in waste intake rates due to future economic slowdown possible

Thank you!

for the hard work and dedication that has allowed us to continue providing waste and recycling services to our communities.



Why our work matters

Unmet Needs

- Estimate 10 years of site life remaining at Rodefeld
- Permitting a new site can take 10 years.
- Our vision for a new site:
 - More than a landfill
 - Intentional about planning a **campus to meet the future needs of waste management**
 - Organics management
 - Circular economies
 - Recreational and multi-use space



2020 Successes (during the pandemic)

- Healthy and safe work environment for our staff. Uninterrupted waste services, RNG operations, and construction events.
- Greater awareness from public for the work our staff performs
- Initiated the vertical expansion project
- Internal training program and safety initiatives
- Solid waste education and outreach: Updated web site and virtual tours
 - Educational flyers
 - Partnership with MCM and progress on Trash Lab

CONST & DEMO
DANE COUNTY
Department of
Waste & Remediation

RECYCLABLE C&D

- Home Demolition
- New Residential/Commercial Construction Debris
- Clean Shingles - (Only Asphalt Shingles, Tiles, & Tar Paper)
- Vinyl Siding
- Tires-No Rims
- Cardboard
- Aggregates - Concrete, Rock/Stone, Brick, Pavers/Tile
- Wood - Plywood, Palets, Cabinets, Doors, Dimensional Lumber
- Metal - Sheet Metal, Pipe, Lamp, Window Frames, Wire

NOT ALLOWED

- NO Appliances
- NO Yangtze/Leaves/Compost
- NO Shingles/Tiles
- NO Hazardous/Contaminated Materials

60% RECYCLABLE MATERIAL

CONSTRUCTION & DEMOLITION RECYCLING
LANDFILL REDUCTION AND RECYCLING, INC.

The Dane County Construction and Demolition (C&D) Recycling Facility accepts C&D debris from waste/recycling haulers, contractors, and commercial/residential customers for recycling. Roll-offs must contain at least 60% recyclable material. Loads are weighed in and out at the Dane County Landfill scale house.

HOURS
7 am - 2:45 pm M-F
8 am - 10:45 am Sat

LOCATION
Dane County Landfill
7102 US Hwy 12
Madison, WI 53718

608.261.8118 x 111 or 608.636.8025

BRUSH & LOG DROP OFF
We accept clean logs and branches at our wood yard (see map below) to make wood chips for landscaping, erosion control, and other uses. We cannot accept yard waste, soil, or other organic debris at this time.

Accepted at wood yard:

- Clean Logs
- Branches/limbs (less than 10" dia)
- Clean Wood Chips

NOT accepted at wood yard:

- Stumps/limbs (greater than 10" dia)
- Stumps/limbs (greater than 10" dia)
- Trunk/limbs
- Limbs (greater than 10" dia)

PRICING GUIDE

Material	Unit	Price
C&D	Yard	\$12.00
Clean Shingles	Yard	\$12.00
Clean Wood	Yard	\$12.00
Wood Chips	Yard	\$12.00
0-800 lbs	Box	\$12.00
801-1,000 lbs	Box	\$25.00
1,001-1,800 lbs	Box	\$37.00
1,801-2,800 lbs	Box	\$50.00
>2,800 lbs	Box	\$50.00

These are accepted at \$100/ton. The other a ton are \$1.00/ton.

ABOUT US
Dane County Waste & Remediation is conserving landfill space through an innovative, public-private partnership with Landfill Reduction & Recycling, Inc. (Landfill Recycling). In 2016, our Construction & Demolition Recycling Facility sorts and separates nearly 200 tons of construction and demolition (C&D) materials a day for beneficial reuse and recycling. Visit our website or call below to learn more about our work.

TO LEARN MORE
Patricia Oberman
Landfill Reduction & Recycling
608.219.0118 x 111
patricia.oberman@landfillrecycling.com

Hosanna Wierbas
Dane County Department of Waste & Remediation
608.261.8118
wierbas.hosanna@dane.wisconsin.gov

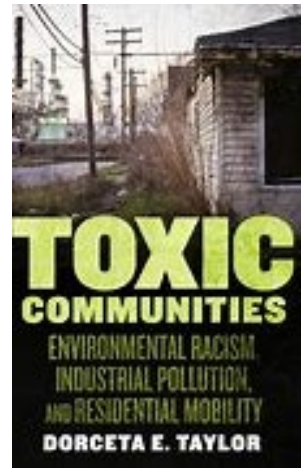
Explore the Dane County Landfill

361 views • Mar 13, 2020

2 0 SHARE SAVE

Our work on Equity and Inclusion

- Mandatory E&I training for all staff on June 26, 2020
 - Connected to our mission and industry history of environmental injustice
- Hosted a Boys and Girls Club Intern
- Continue participation on CDL Intern program
- Multi lingual resources and educational tools
- Increased usage of symbols on signage





Contact us at

John Welch, PE

Director

[welch@
countyofdane.com](mailto:welch@countyofdane.com)



Roxanne Wienkes, PE

Deputy Director

[Wienkes.Roxanne@
countyofdane.com](mailto:Wienkes.Roxanne@countyofdane.com)

