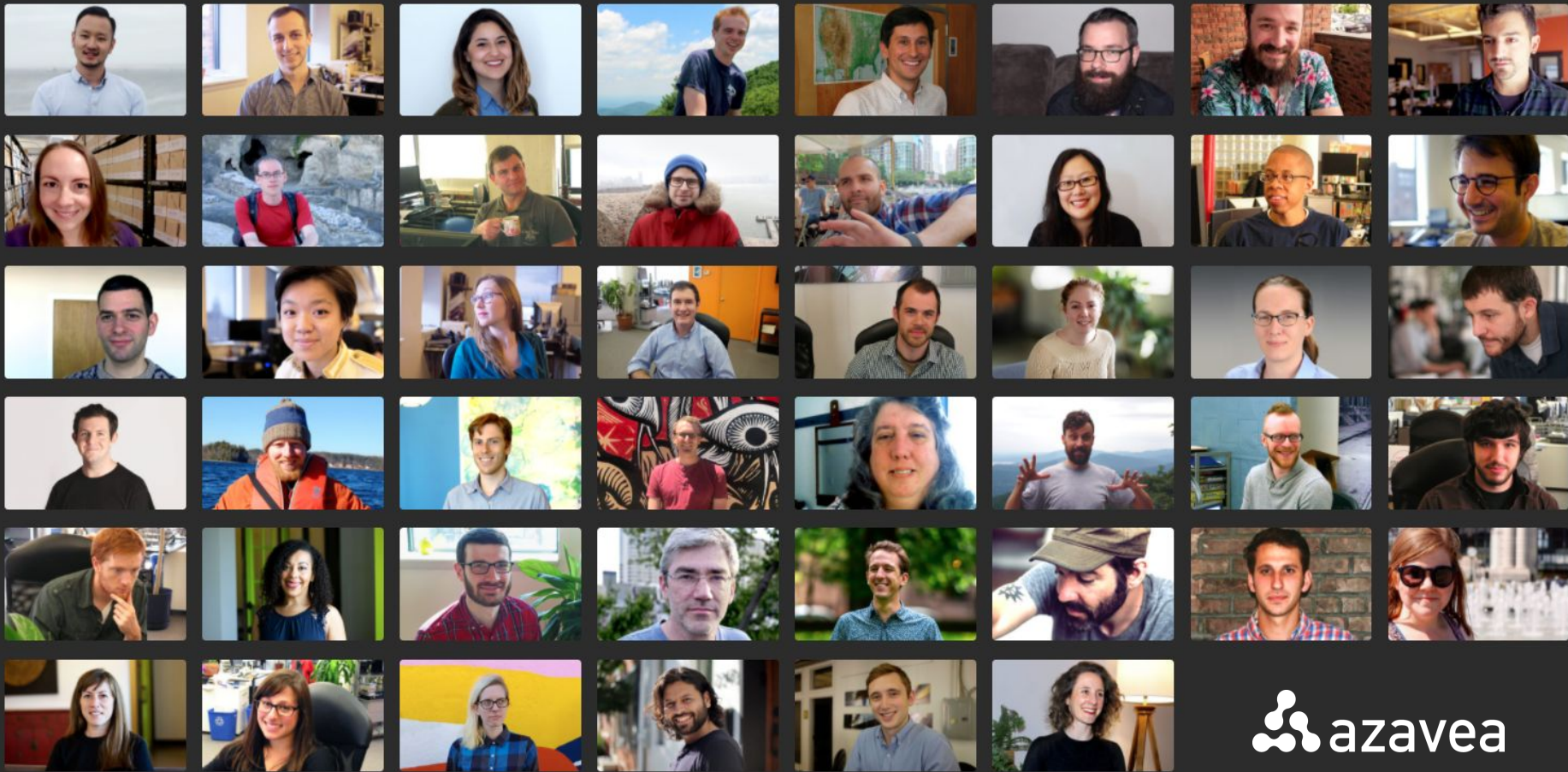




23 November 2020

Introduction to DistrictBuilder

County of Dane, WI



Today's Agenda

- Rethinking DistrictBuilder for 2021
- Key features
- DistrictBuilder for Dane County
- DistrictBuilder demo and Q&A

DistrictBuilder in the 2010 Cycle



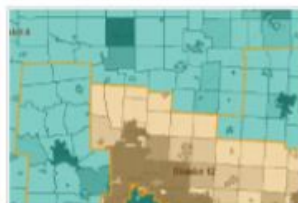
CA Contra Costa County



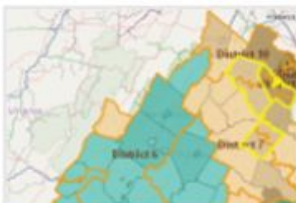
AZ Competitive
Districts Coalition



PA Fix Philly Districts
Competition



OH Ohio Redistricting



VA Redistricting
Competition



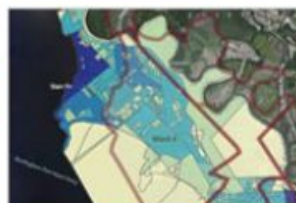
MN Draw Minnesota



NY Redistrict NY



IN Marion County



VT Burlington
DistrictBuilder

Rethinking DistrictBuilder for 2021

Could we continue supporting
block-level editing on the web?

Can we support public participation?

Could redistricting be a
fun experience?

Design principles

How do we make DistrictBuilder a tool people *want* to use?

Enable real-time editing & updates

Faster drawing tools encourage exploration.

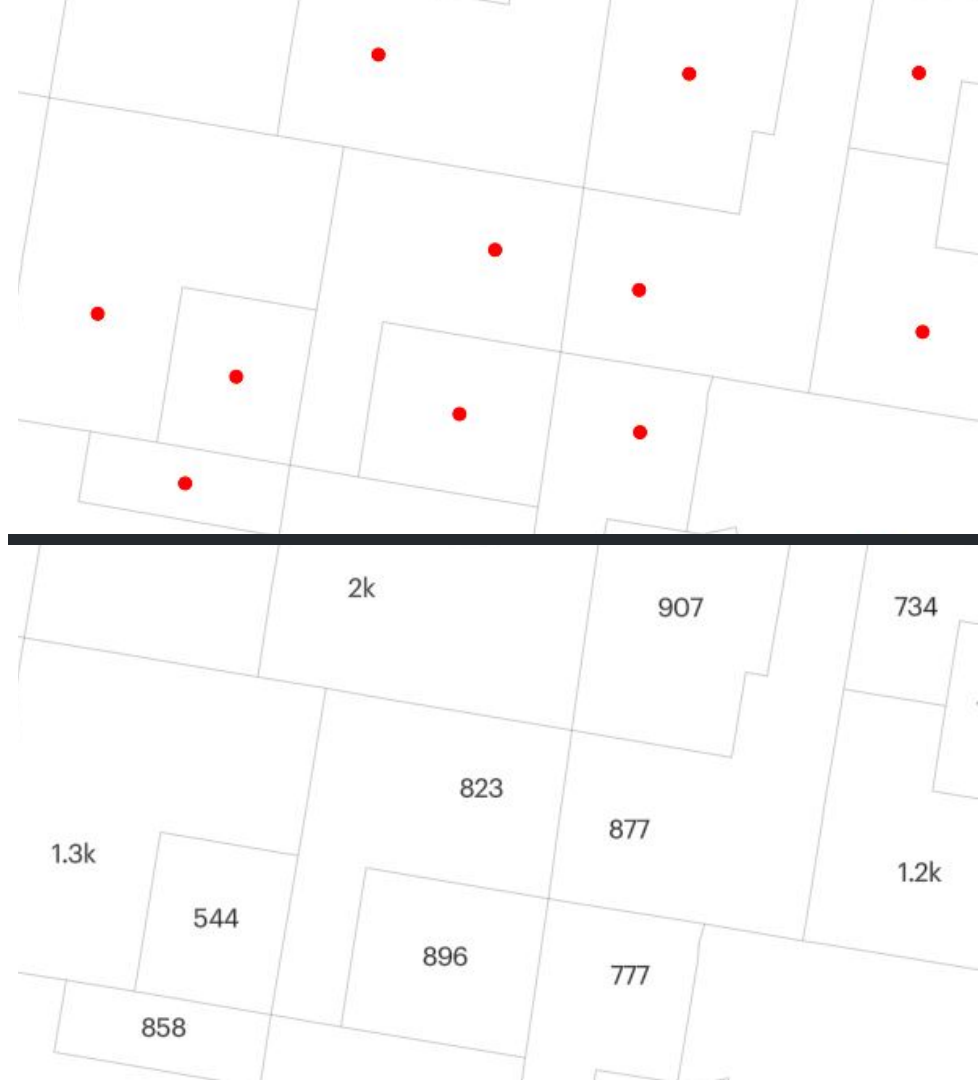
Example: Computing district changes while drawing



Provide discoverable advanced features

Allow power users to discover additional features without cluttering the interface.

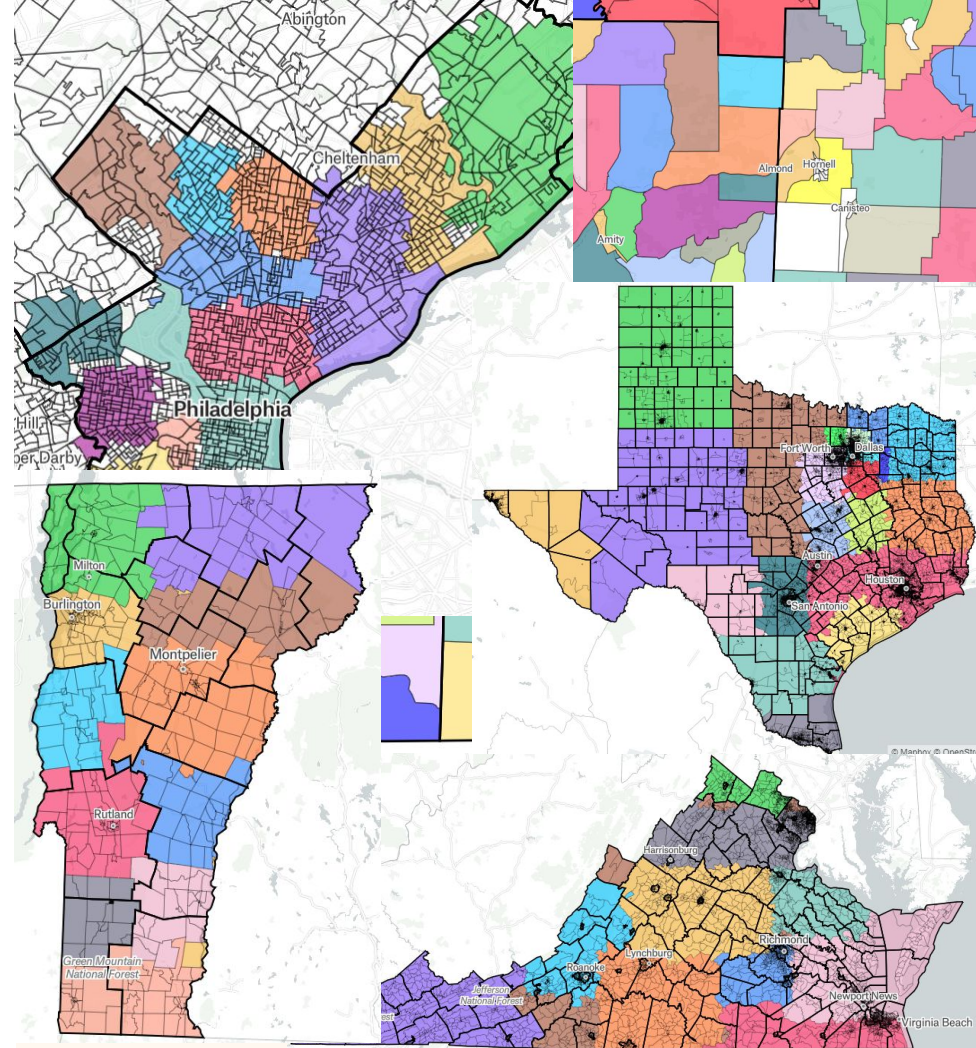
Example: Population labels



Make redistricting open, and accessible

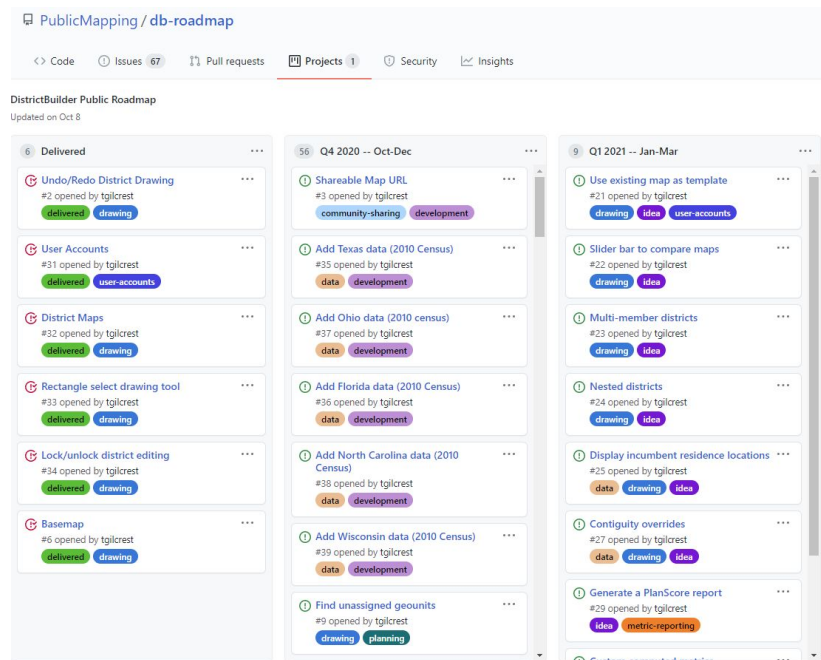
Redistricting is better when the people participate. We bring redistricting out from behind closed doors into the open.

Example: Share your map out to anyone with a link



Between now and 2021

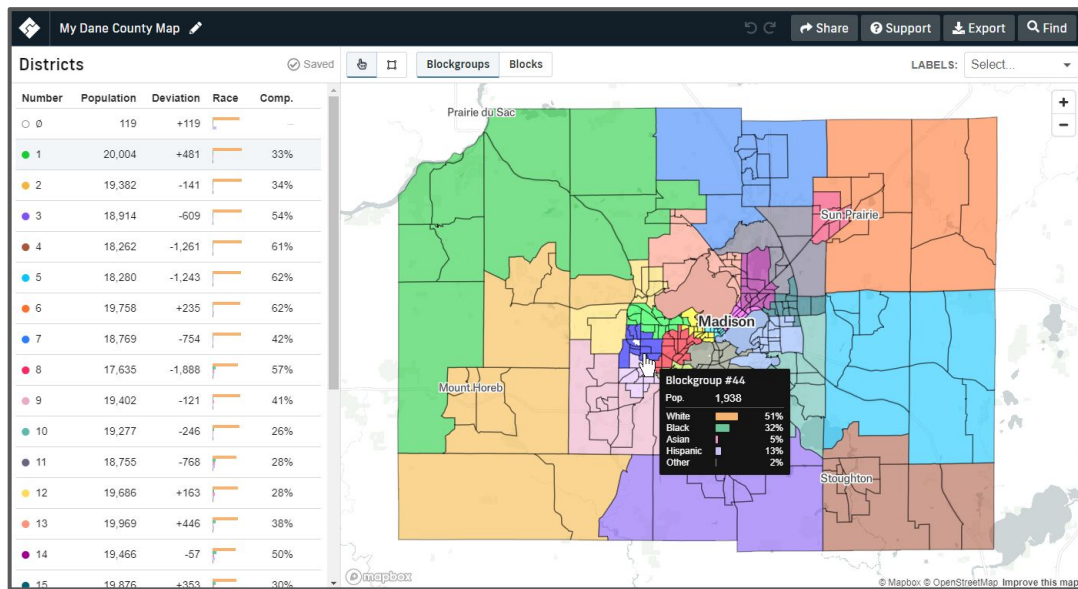
- Partnership with Public Mapping Project
- Funding from Sloan Foundation
- Election results & PL 94 data
- 50 states
- Features
 - Keyboard shortcuts
 - Advanced metrics
 - Unassigned blocks
 - Shareable Maps
- Open Source
 - Access to source code
 - Public Roadmap



DistrictBuilder for County of Dane

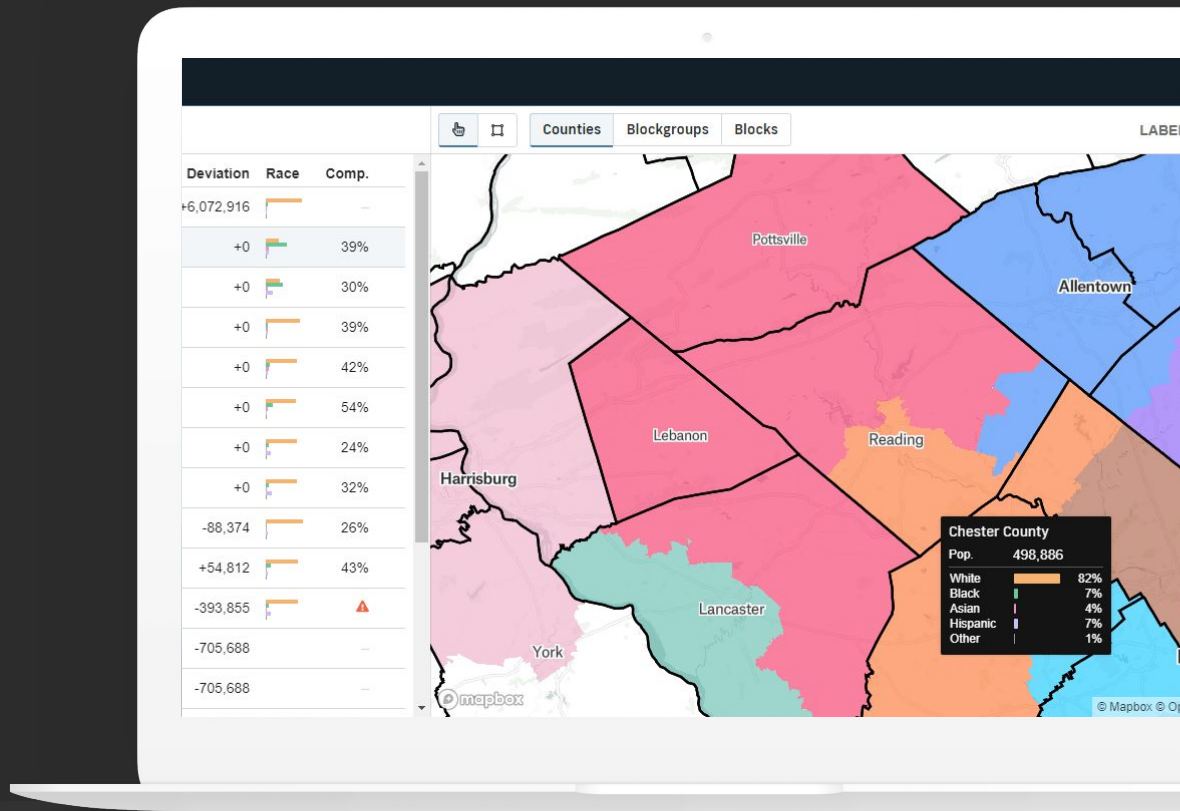
Custom Region Configuration

- Dane County-specific geography
- 37 configured districts
- Block- and blockgroup-level redistricting
- Access via custom URL
- User maps reports with link to maps





Demo



Create Map Link

Resources

- Get back to your map: <https://DistrictBuilder.org> > Login
- Webinar Recording
- Getting Started Guide:
<https://github.com/PublicMapping/districtbuilder/wiki/Getting-Started-with-DistrictBuilder>
- Email:
support@districtbuilder.org
- Public Roadmap:
<https://github.com/PublicMapping/db-roadmap/projects/1>



Thank you!



<https://github.com/PublicMapping/districtbuilder>



@DistrictBuilder



DistrictBuilder