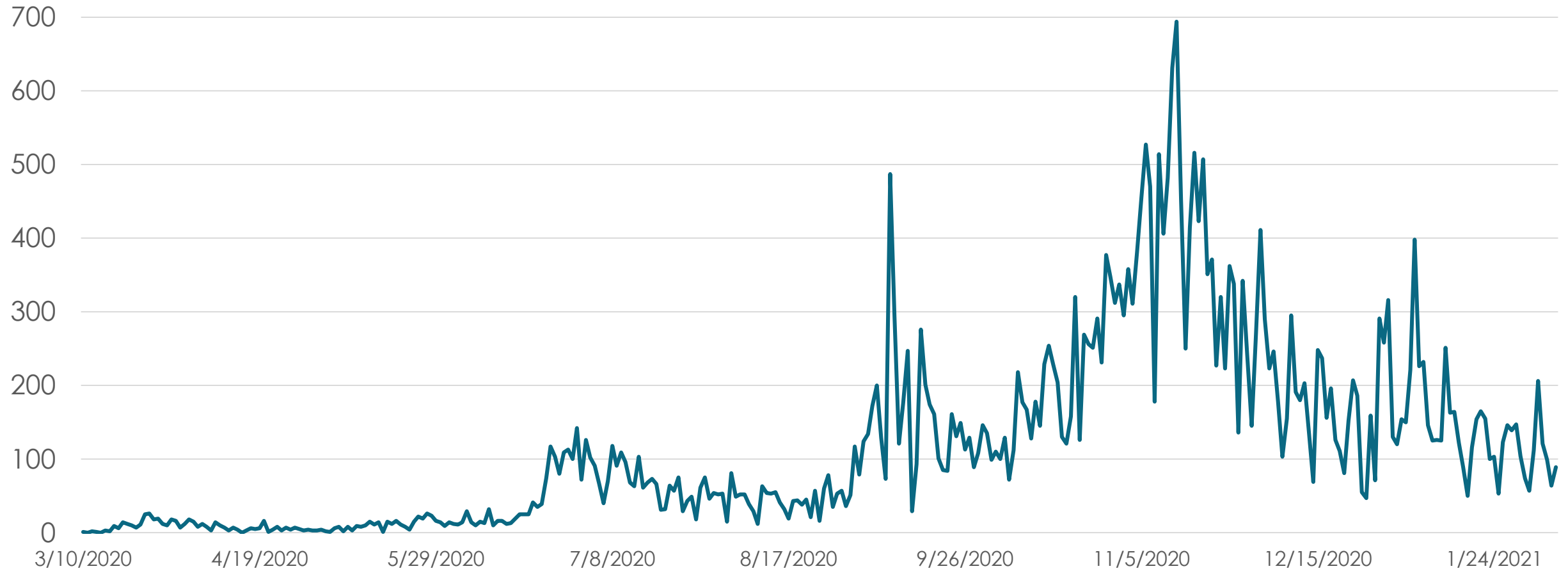


COVID-19 Update

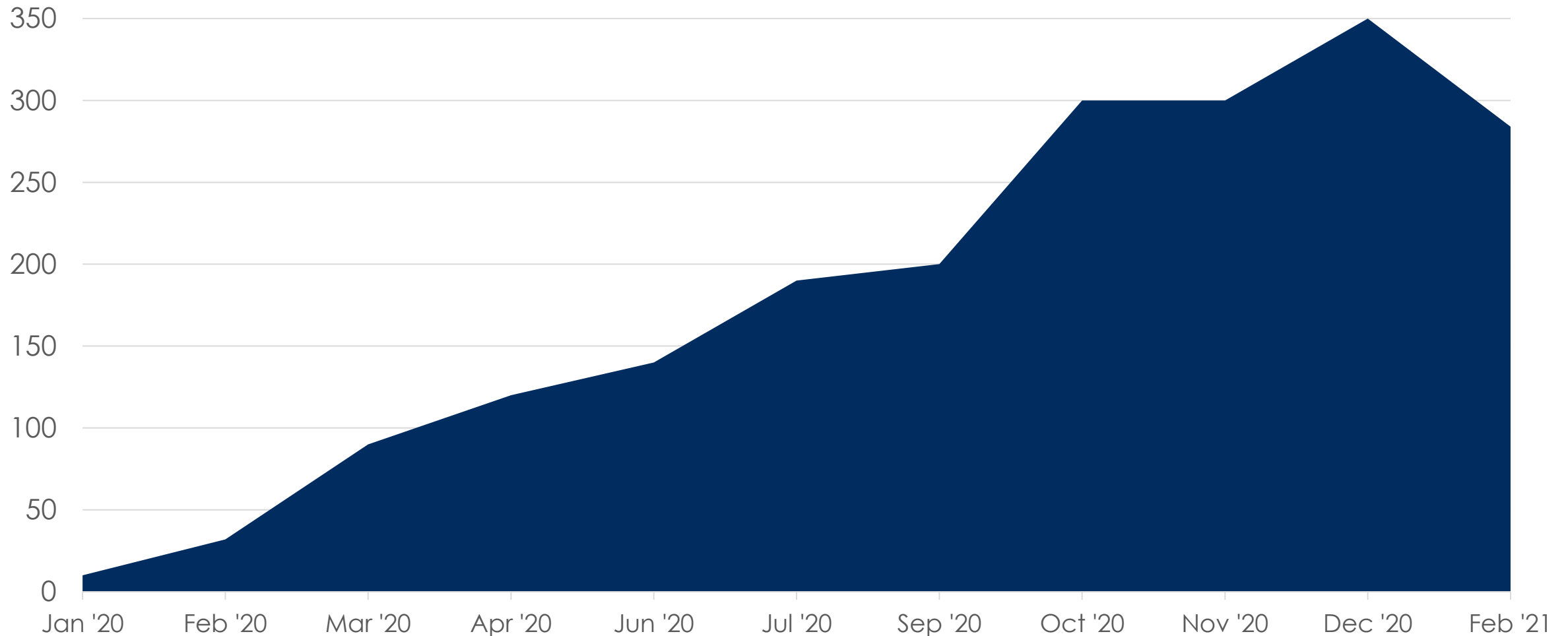
Janel Heinrich, Director
Public Health Madison &
Dane County
February 9, 2021

**LOOKING
BACK AT ONE
YEAR**

38,000+ people have tested positive for COVID.



Our staff has grown dramatically.



We've issued 15 orders.

MARCH 13

Issue first order restricting gatherings to 250 people

MARCH 16

Issue order closing schools and limiting gatherings to 50 people

MAY 13 (Order 1)

Dane County Safer at Home order goes into effect

MAY 18 (Order 2)

Phase 1 order goes into effect which opens most businesses to 25%

MAY 26 (Order 3)

Phase 1 order goes into effect which opens most businesses to 25%

JUNE 5 (Order 4)

Issue order revising mass gathering criteria

JUNE 15 (Order 5)

Phase 2 order goes into effect which opens most businesses to 50%

JUNE 25 (Order 6)

Reduces gathering size; people in bars & rest. must be seated

JULY 2 (Order 7)

Reduces gathering size; closed indoor bar service

JULY 13 (Order 8)

Requires masks in some settings

AUGUST 21 (Order 9)

Required grades 3-12 to start the year virtually

NOV 17 (Order 10)

Eliminated indoor gatherings of all sizes

DEC 15 (Order 11)

Increases indoor and outdoor gathering limits

JAN 12 (Order 12)

Increases outdoor gatherings

FEB 8 (Order 13)

Increases gatherings, allows sports, enhances masking requirements

We've tested thousands.

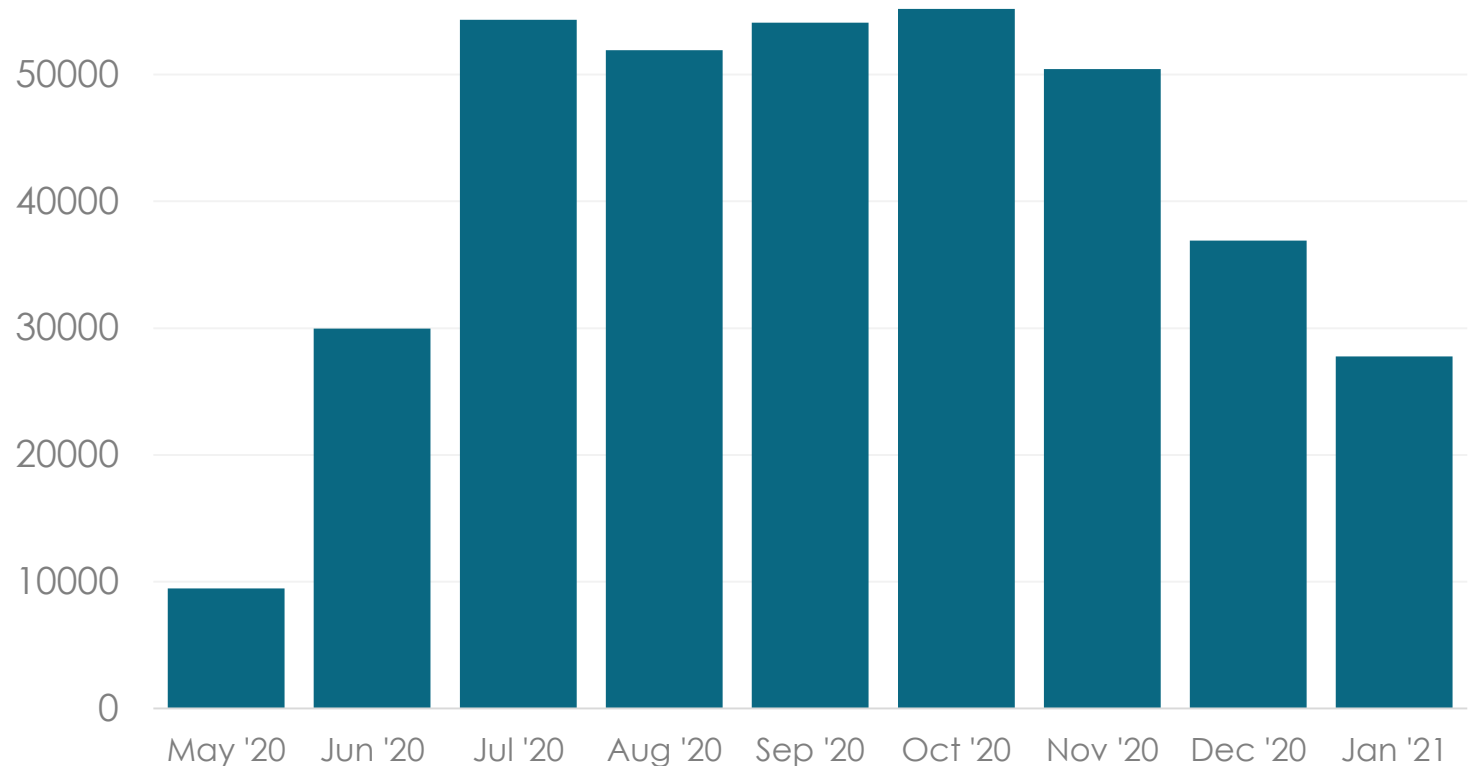
Total tested: 385,344

Tested at Alliant: 374,479

**Tested at South Madison
Test Site: 9,544**

Tested in Shelters: 1,321

Testing at Alliant by Month



We've vaccinated thousands.



10,424 doses administered

As of 2/4

We've communicated through it all.



**News
Releases**

56

**Media
Inquiries**

1,022

**Press
Conferences**

36

**Blog
Posts**

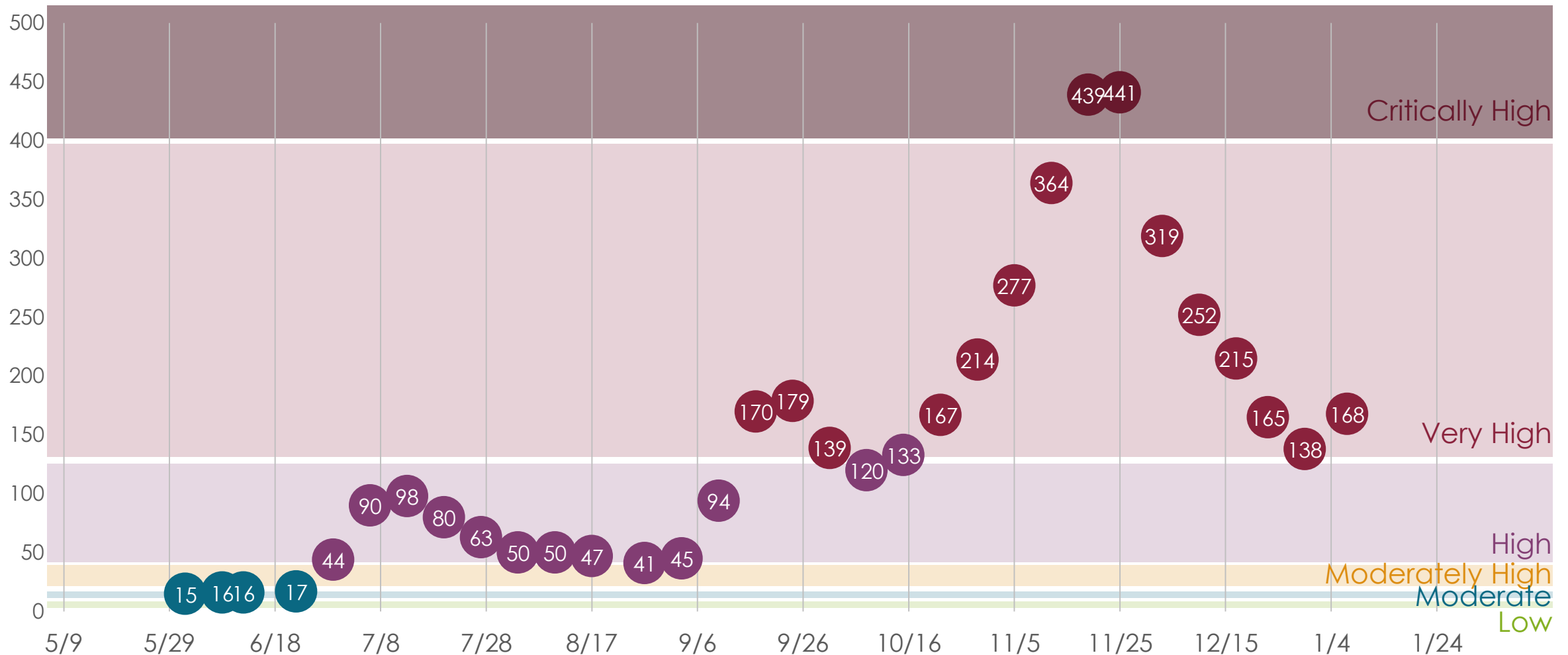
79

**Calls and
Emails**

7,080 emails
4,140 calls

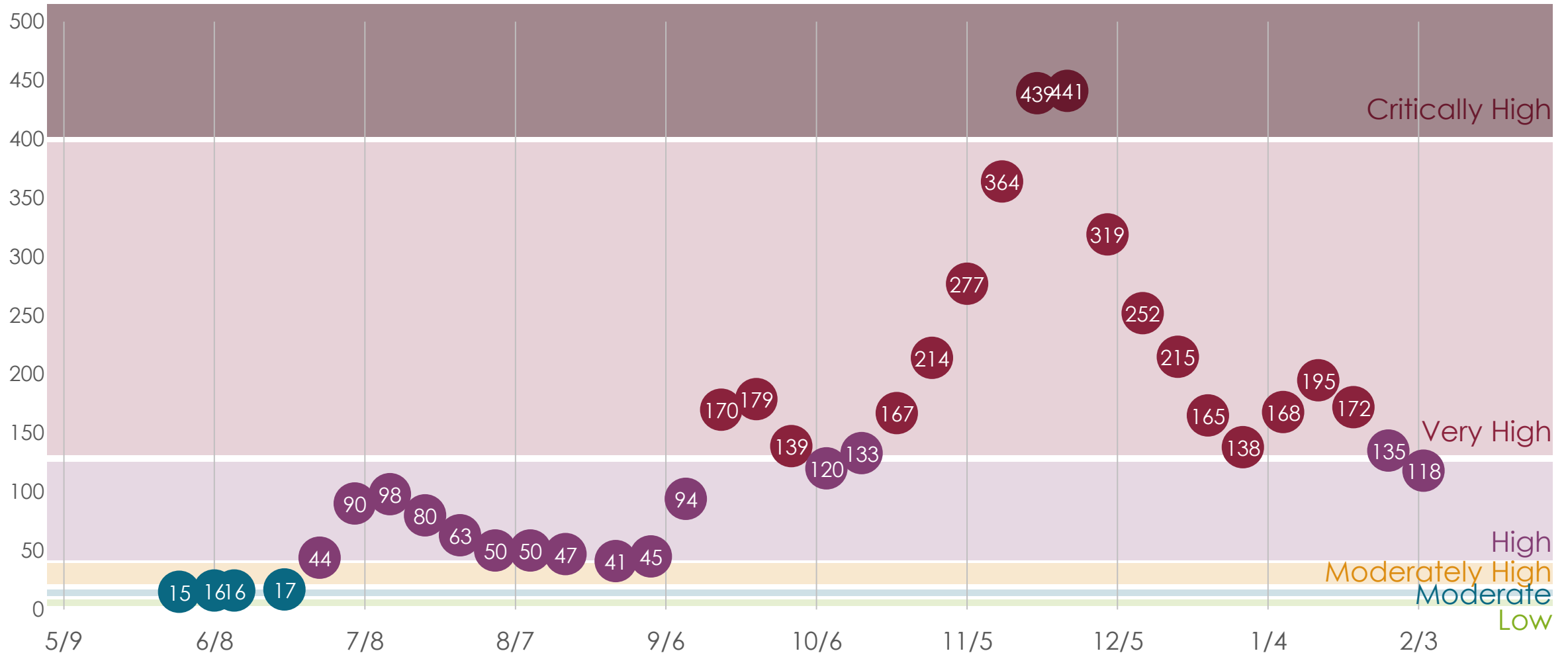
DATA

The last time we met, our 14-day averages looked like this:



Our current 14-day average

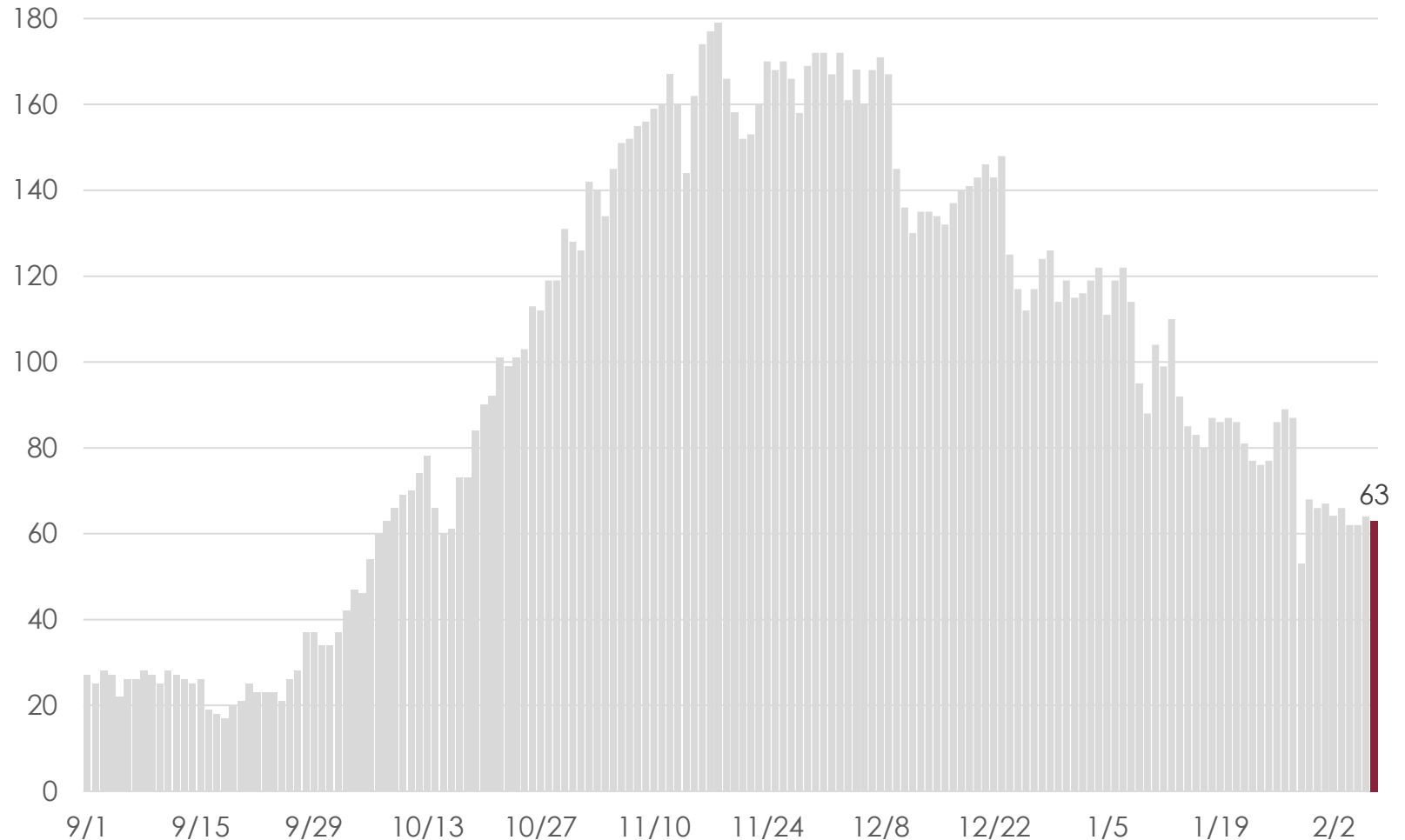
We're at our lowest level since October 15.



Hospitalizations

Hospitalizations have declined but remain higher than they were early in the fall.

Last time we met, we had 99 hospitalizations.



**LOOKING
AHEAD**

Looking Ahead

Currently limited by vaccine supply

In Dane County, people who are currently eligible (e.g., people 65 years old and older) and soon to be eligible (e.g., teachers) make up at least 30% of the county, but we're only receiving a fraction of those doses.



Looking Ahead

Ramping up

Federal officials have indicated that there might be an increase in vaccine supply soon.

We are hiring more staff and freeing up resources to operate more lanes of vaccination, more hours per day, and more days per week.



COVID-19 Update

Janel Heinrich, Director
Public Health Madison &
Dane County
February 9, 2021