



**Sheena Tesch**

Deputy Director of Northside  
Programming

Gardens Network Director

Dane County Food Council





**Collaborations Rooted  
in Food, Land and  
Learning. [rootedwi.org](https://rootedwi.org)**

- Center for Resilient Cities and Community Groundworks merged in January of 2020
- Badger Rock Neighborhood Center and urban farm
- 26 acre property at Troy Community Gardens
  - 300 community garden plots, The Kids Garden, and Troy Farm
- Goodman Youth Farm
- The Gardens Network
- The Farm to School Network and Farm to Early Care and Education.

# Anderson Farm County Park Farm Project

This was the first step and considered a pilot project for implementing the agricultural vision for the park as outlined in the Anderson Farm County Park Master Plan (2013) and Anderson County Farm: Agricultural Mission (2018)



# Anderson Farm County Park Farm Project

In April 2019, Rooted (Community GroundWorks) entered a contract with the Dane County to develop and implement a plan to add community and market gardens at the Anderson Farm County Park.

- Improve land access and create economic opportunity for underserved populations lacking prospects for stable land tenure.
- Recruit gardeners and have gardens up and running on a small tract of land by the start of the planting season in 2020.

# Anderson Farm Project



# Anderson Farm Project

With funding from a PIE Grant, Rooted worked with Yimmuj Yang to coordinate new growers.

- Rental agreements
- Use of water and tools
- Covid safety
- Feedback and planning



# Anderson Farm Project



With the help of a local farmer, we broke ground on April 20, 2020

# Anderson Farm Project



With the help of a local farmer, we broke ground on April 20, 2020

# Anderson Farm Project

Growers had to provide their own watering systems, which consisted mostly of buckets and watering cans.

The soil was rocky and unamended.



# Anderson Farm Project



“Please tell the government to let us grow here forever. I love growing my own food. I didn’t have anywhere to grow last year; it felt like an eternity. I am very happy to have the opportunity to grow food this year.”

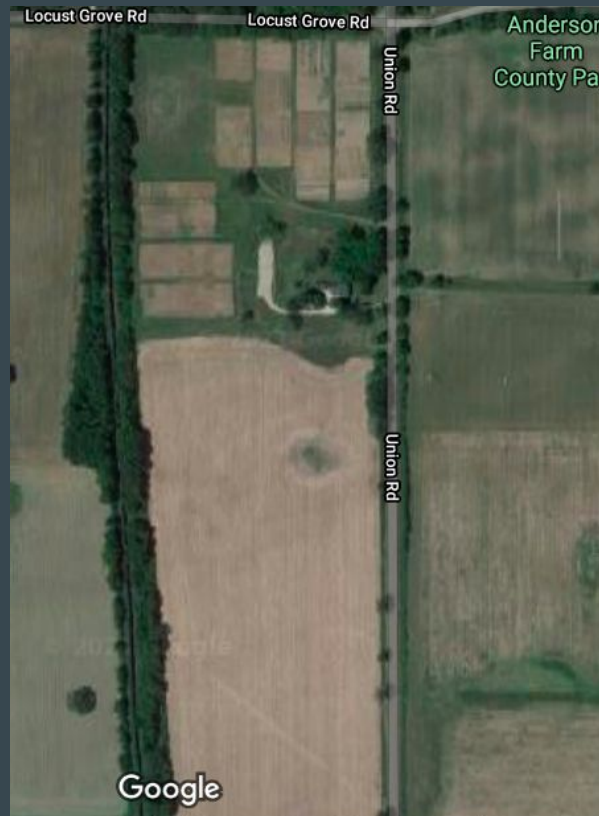
# Anderson Farm Project

“Every year, when January is here, my hands and feet are itching to get into the soil. I can’t wait for the growing season to start again. Oh, how wonderful it would be if we are able to grow here forever.”



# Anderson Farm Project

In alignment with Anderson Farm County Park Master Plan (2013) and Anderson County Farm: Agricultural Mission (2018), we hope to expand to the southern 25 Acres for market gardens between 1 and 5 acres.



# Anderson Farm Project



Thank you