

HEALTHY LAKES. HEALTHY COMMUNITY.



ONLINE
EDITION

Healthy Land, Healthy Lakes



Speakers:

Joe Parisi, Dane County Executive

John Reimer, Dane County Land & Water Resources

Kathy Kuntz, Dane County Office of Energy & Climate Change

Photo courtesy of Robert Bertera

Wednesday, March 10th, 8:00-9:00 A.M.



HEALTHY LAKES. HEALTHY COMMUNITY.

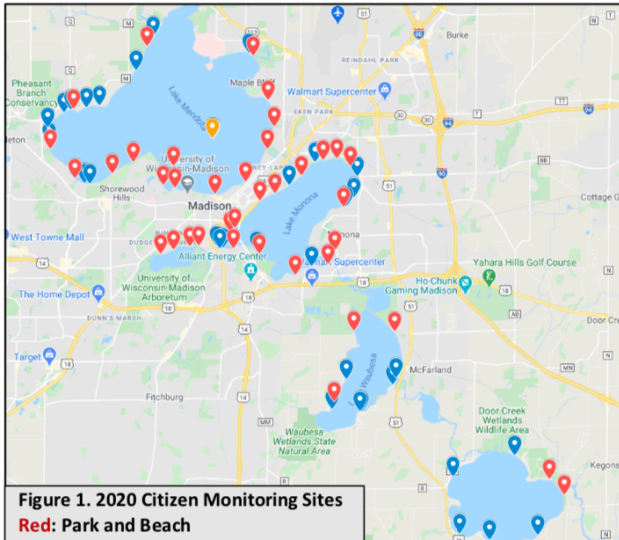
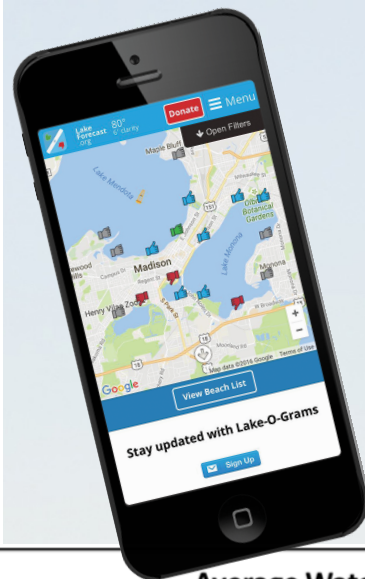
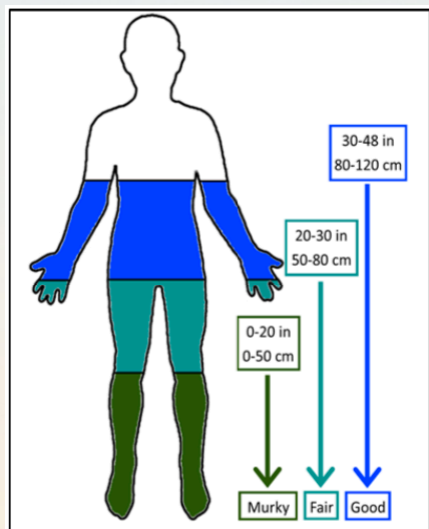


Figure 1. 2020 Citizen Monitoring Sites
Red: Park and Beach
Blue: End-of-Pier
Orange: Mendota Buoy

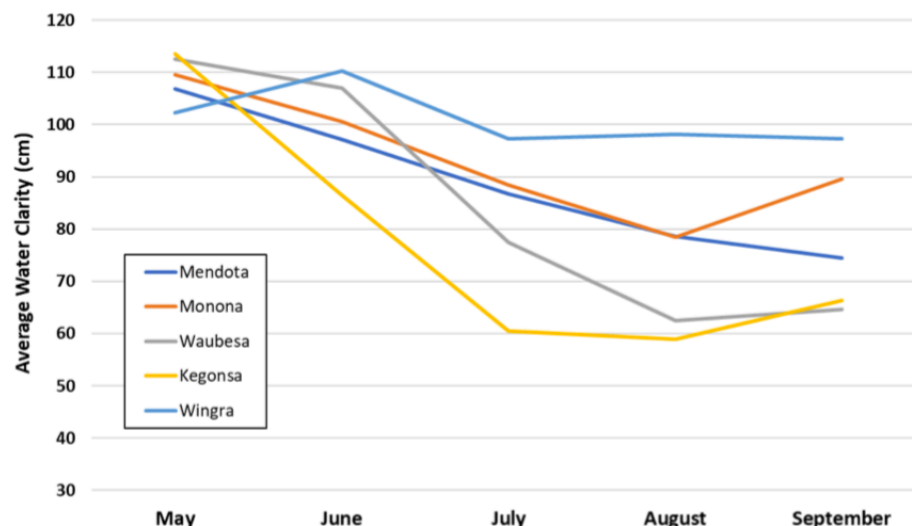


2020 Monitoring Season Summary

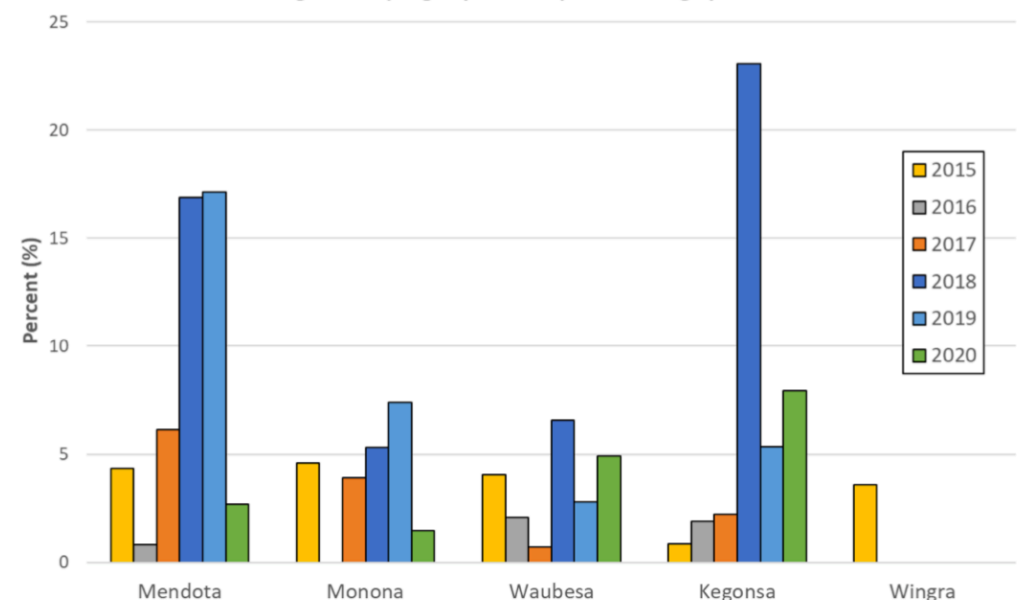
| | 2013 | 2014 | 2015 | 2016 | 2017 | 2018 | 2019 | 2020 |
|---------------------|------|------|-------|-------|-------|-------|-------|-------|
| Monitoring Stations | 10 | 46 | 58 | 79 | 69 | 79 | 78 | 71 |
| Volunteers | 9 | 43 | 57 | 68 | 73 | 87 | 67 | 85 |
| Volunteer Hours | 224 | 446 | 463 | 610 | 550 | 732 | 501 | 580 |
| Condition Reports | 204 | 945 | 1,258 | 1,720 | 1,989 | 2,686 | 2,005 | 2,294 |



Average Water Clarity 2020



Percentage of Sampling Days with Report of Strong Cyanobacteria



HEALTHY LAKES. HEALTHY COMMUNITY.



Experiment Instructions

Step 1

Collect your materials. Using your pre-experiment worksheet, permanent marker, and sealable plastic bag, draw and label the steps of the water cycle to look like this:



Step 2

Measure a 1/3 cup of water. If you want to add blue food coloring, add at this step.

Step 3

Carefully pour 1/3 cup of water into your sealable plastic bag with your drawing.



ZIP IT CLOSED - make sure the seal is nice and tight!

Step 4

Find a window with lots of sunshine. Stick two long pieces of tape to the corners of your sealable plastic bag. Then, tape your bag up to your window.



Write your observations in the **before** section, what does the water in the bag look like?

Addition & Subtraction

ADD.

| | | | | |
|-----------------|-----------------|----------------|-----------------|-------------------|
| 1. 674 + 272 | 2. 416 + 152 | 3. 747 + 25 | 4. 479 + 398 | 5. 1,355 + 777 |
| Ans | Ans | Ans | Ans | Ans |

WRITE AN EQUATION AND SOLVE THE PROBLEM.

Lake Wingra has 284 bluegills and 174 catfish. How many total fish does Lake Wingra have?

Type Answer Here!

Weights of Wild Cats at Henry Vilas Zoo

| Type of Wild Cats | Weight in Pounds |
|-------------------|------------------|
| Lion | 329 |
| Tiger | 485 |
| Leopard | 87 |
| Cheetah | 128 |
| Jaguar | 204 |

- What is the combined weight of the two smallest cats in the table? Ans
- The total weight for which two cats is 533 pounds? Ans
- The total for which two cats is about 460 pounds? Ans
- The total weight for which two cats is about 700 pounds? Ans
- The weight of which two cats, rounded to the nearest hundred, are the same number? Ans

Worksheet # 11

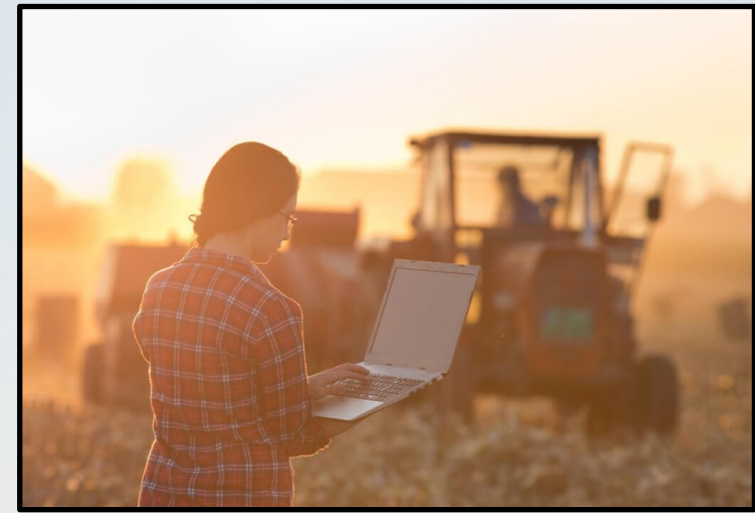


HEALTHY LAKES. HEALTHY COMMUNITY.

2021 Yahara CLEAN Initiatives

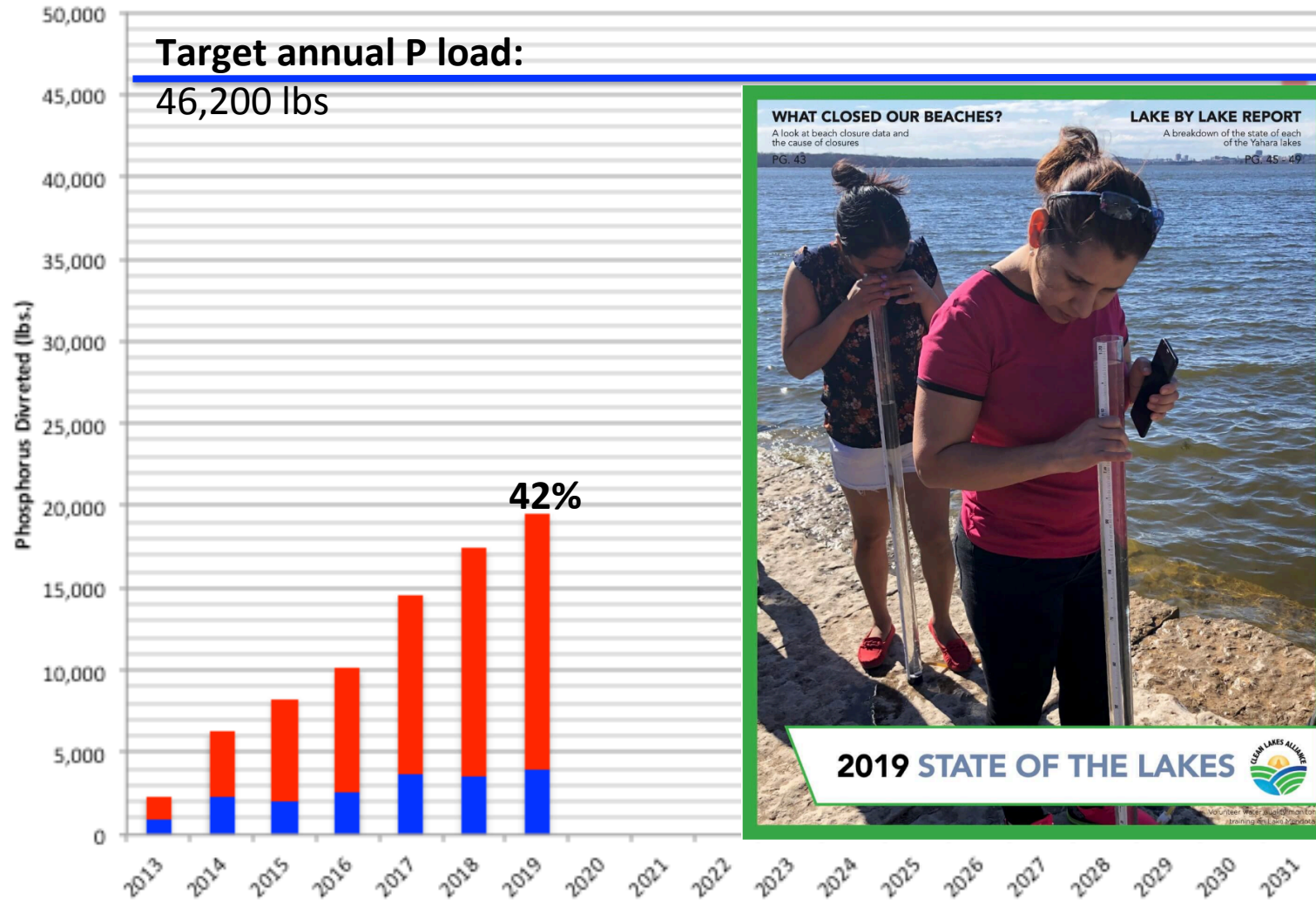
Total: \$194,000

- Compact: \$150,000
- Grants: \$44,000
 - \$25,000 Pheasant Branch Conservancy
 - \$5,000 Yahara Pride Farms
 - \$3,000 UW-Engineering Capstones
 - \$1,000 Pheasants Forever - Precision Ag Position
 - \$10,000 Unallocated



HEALTHY LAKES. HEALTHY COMMUNITY.

Yahara CLEAN Progress (2013-2019)



47%

Rural

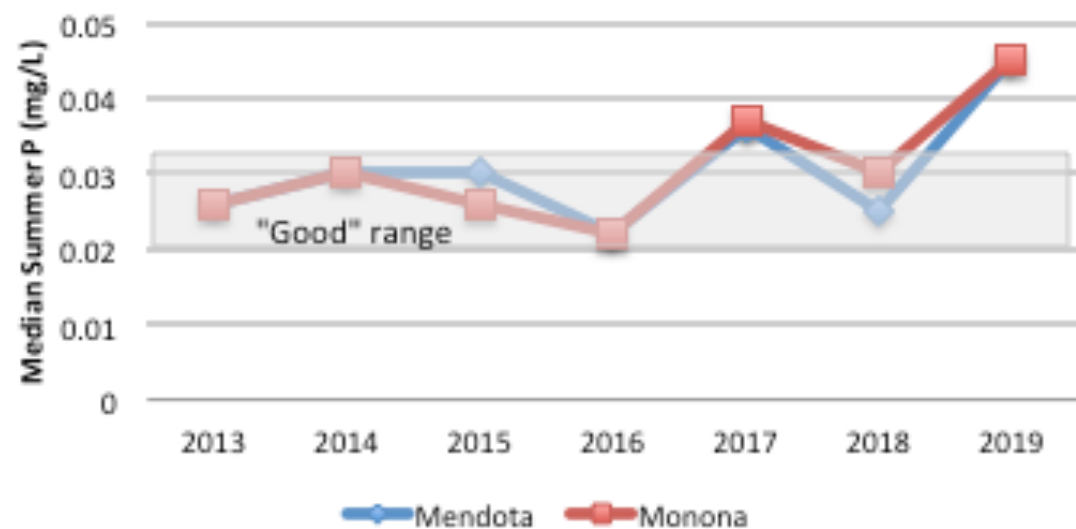
Urban

30%

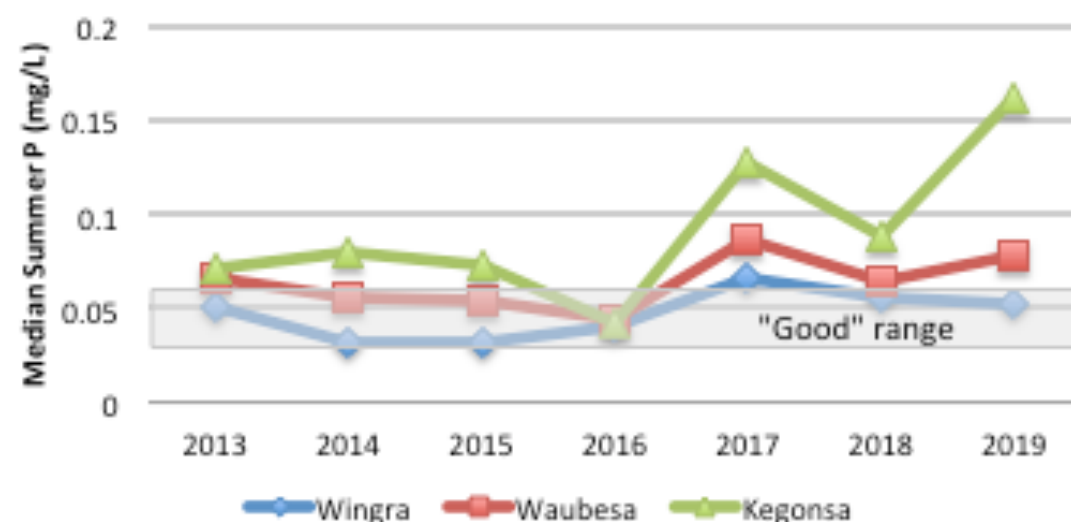


HEALTHY LAKES. HEALTHY COMMUNITY.

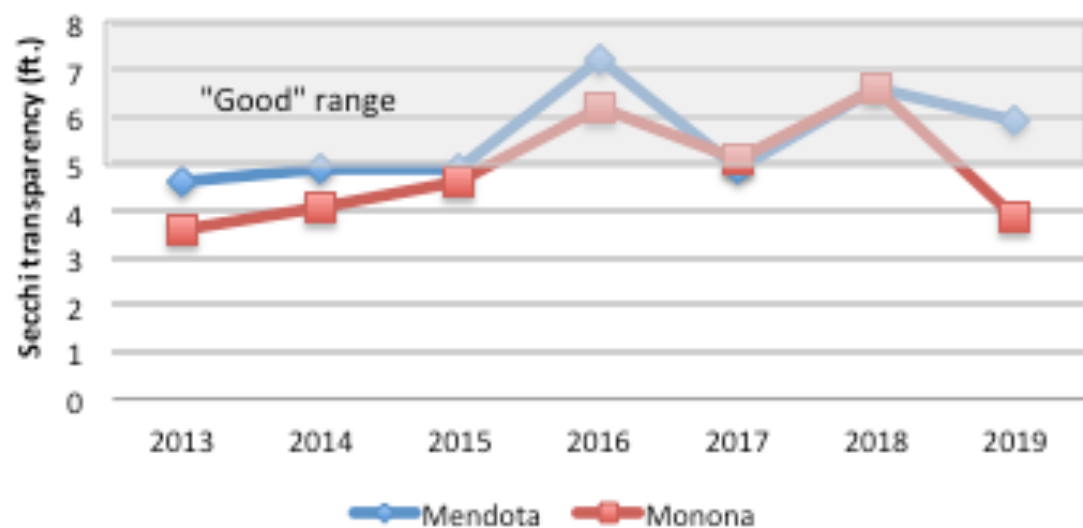
Total Phosphorus



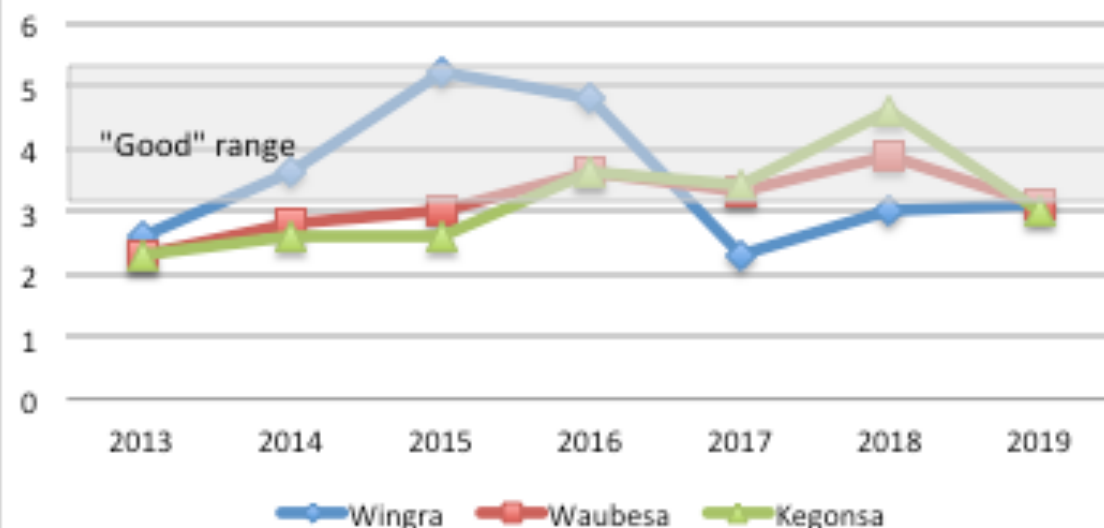
Total Phosphorus



Water Clarity

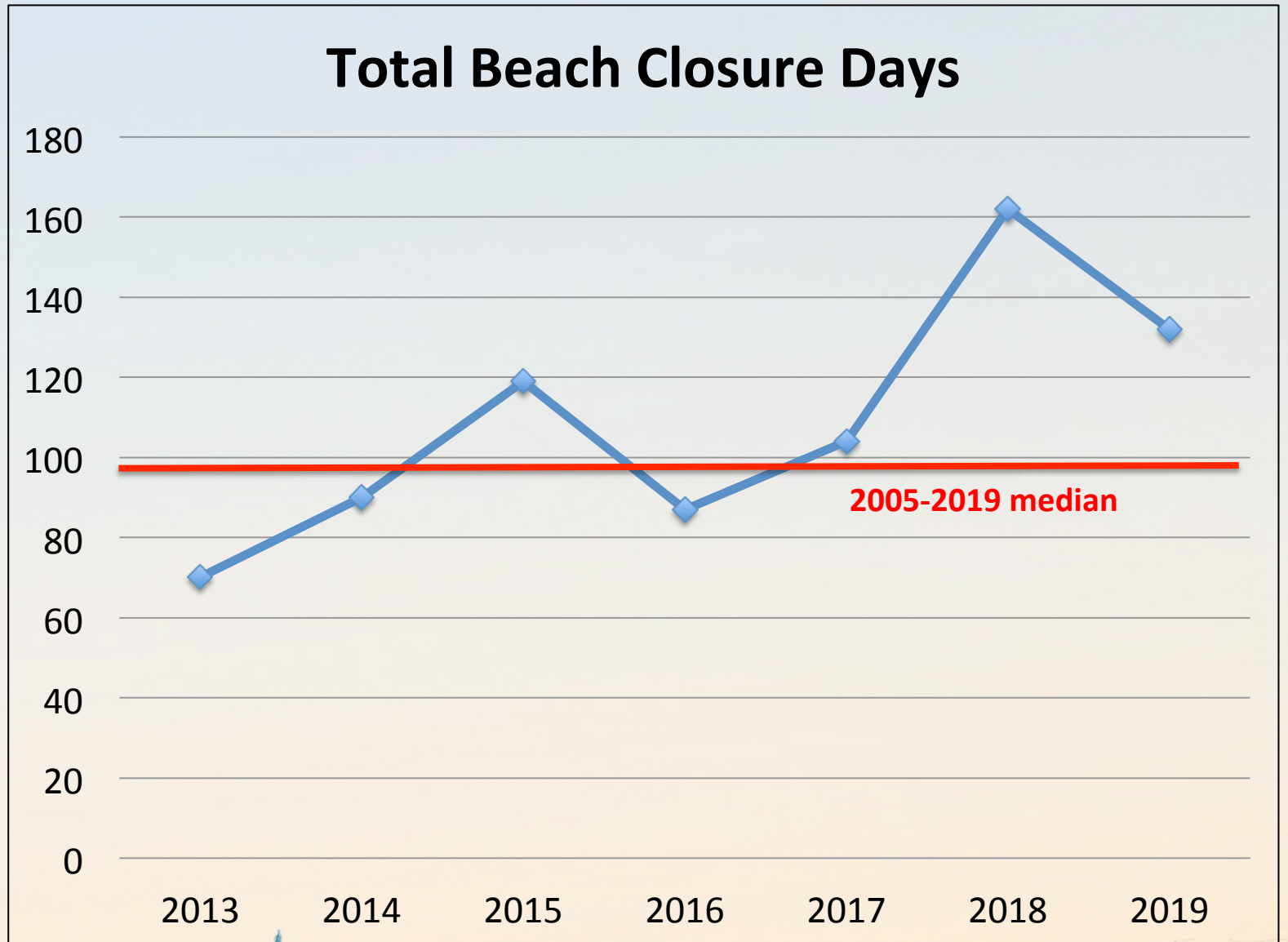


Water Clarity



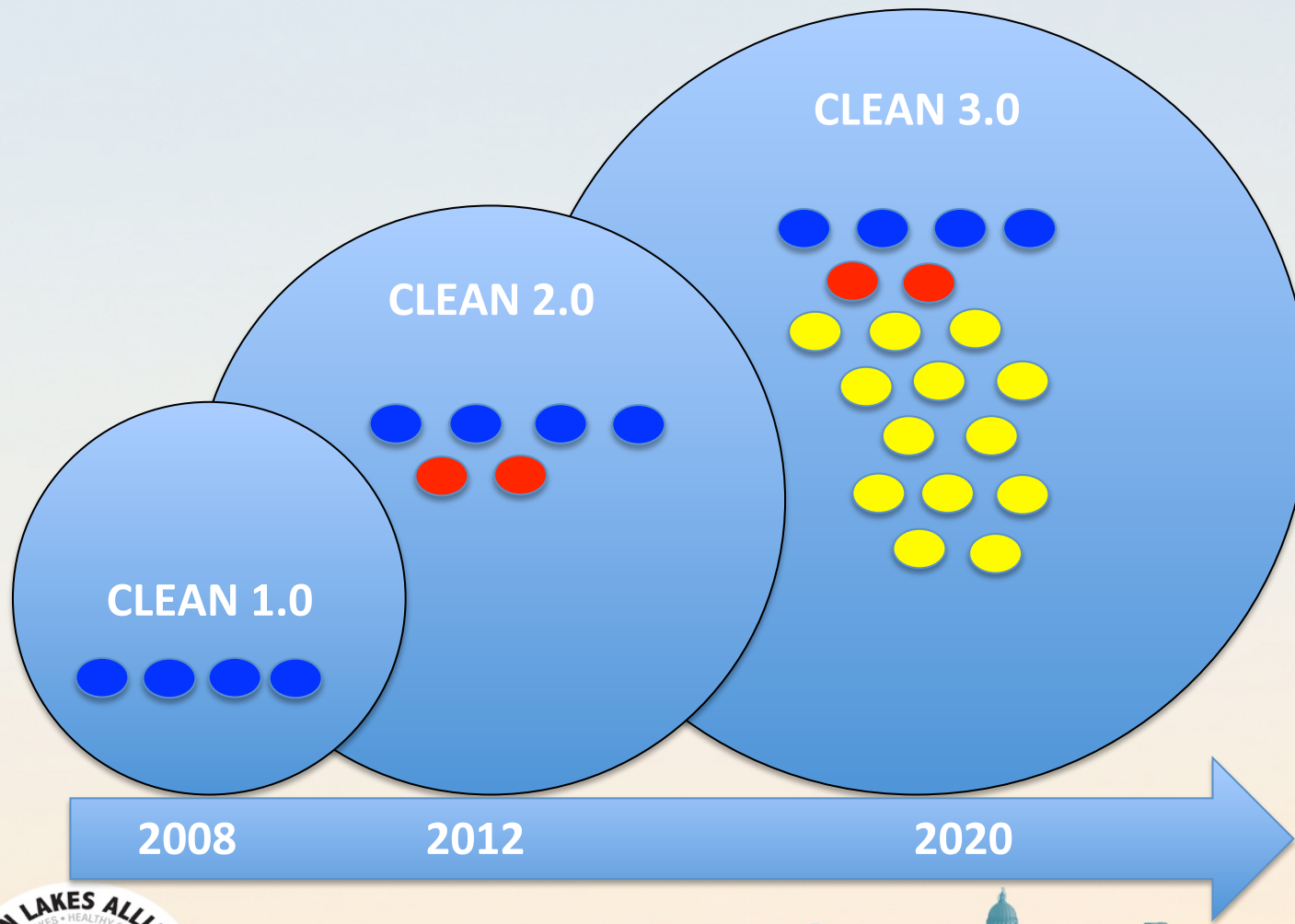


**We should be able to
swim in our lakes!**



HEALTHY LAKES. HEALTHY COMMUNITY.

Yahara CLEAN Compact



- Wisconsin DNR
- Wisconsin DATCP
- Dane County
- City of Madison
- Clean Lakes Alliance
- UW Center for Limnology
- Madison Metropolitan Sewerage Dis.
- Yahara WINS
- Capital Area Regional Planning Com.
- Realtors Association of SC Wisconsin
- Dairy Farmers of Wisconsin
- UW-Madison
- UW Nelson Institute
- UW Division of Extension
- City of Middleton
- Yahara Lakes Association
- Builders Association
- Dane County Towns Association
- Dane County Cities & Villages Assoc.



HEALTHY LAKES. HEALTHY COMMUNITY.

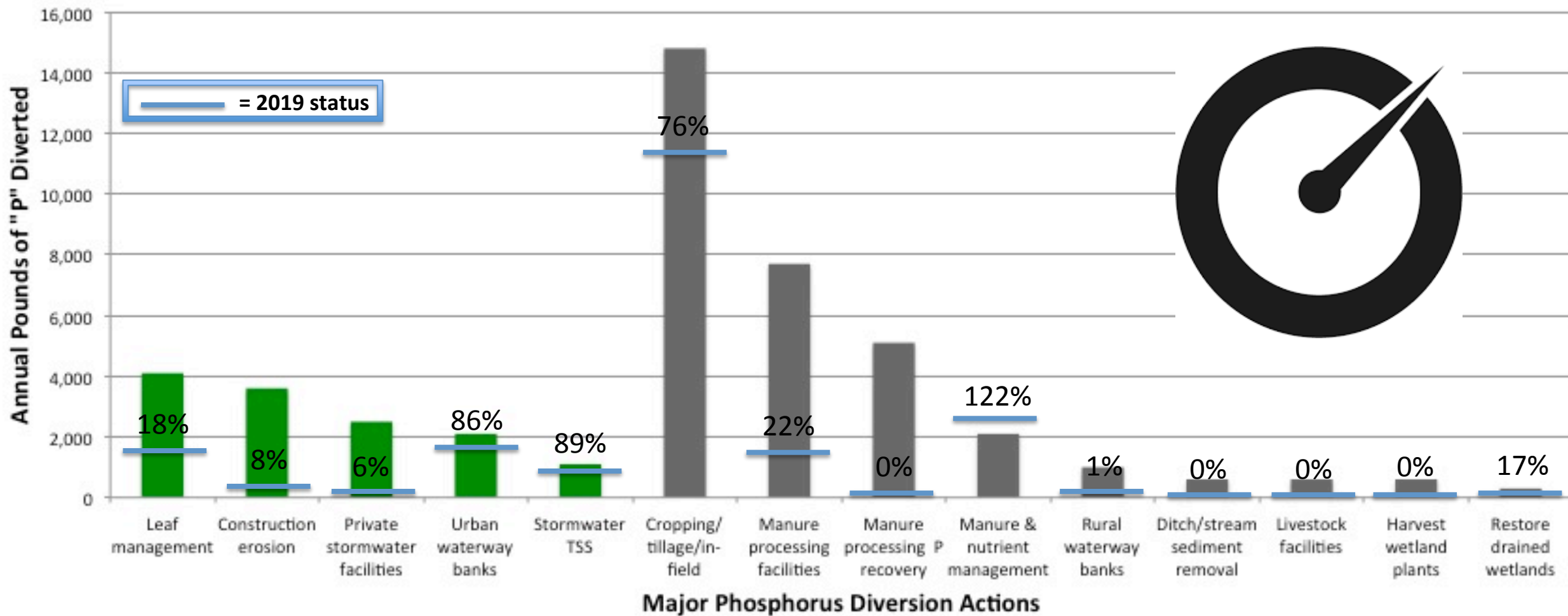
Stakeholders & Focus Groups

- **19 Compact members**
- **Local government**
- Regulatory agencies
- **Residents/homeowners**
- **Farmers/Producers**
- Neighborhood associations
- Research institutions
- Watershed nonprofits
- Beach managers
- Public health experts
- **Waterfront property owners**
- **Developers/Commercial**



HEALTHY LAKES. HEALTHY COMMUNITY.

CLEAN 2.0 Progress Dashboard



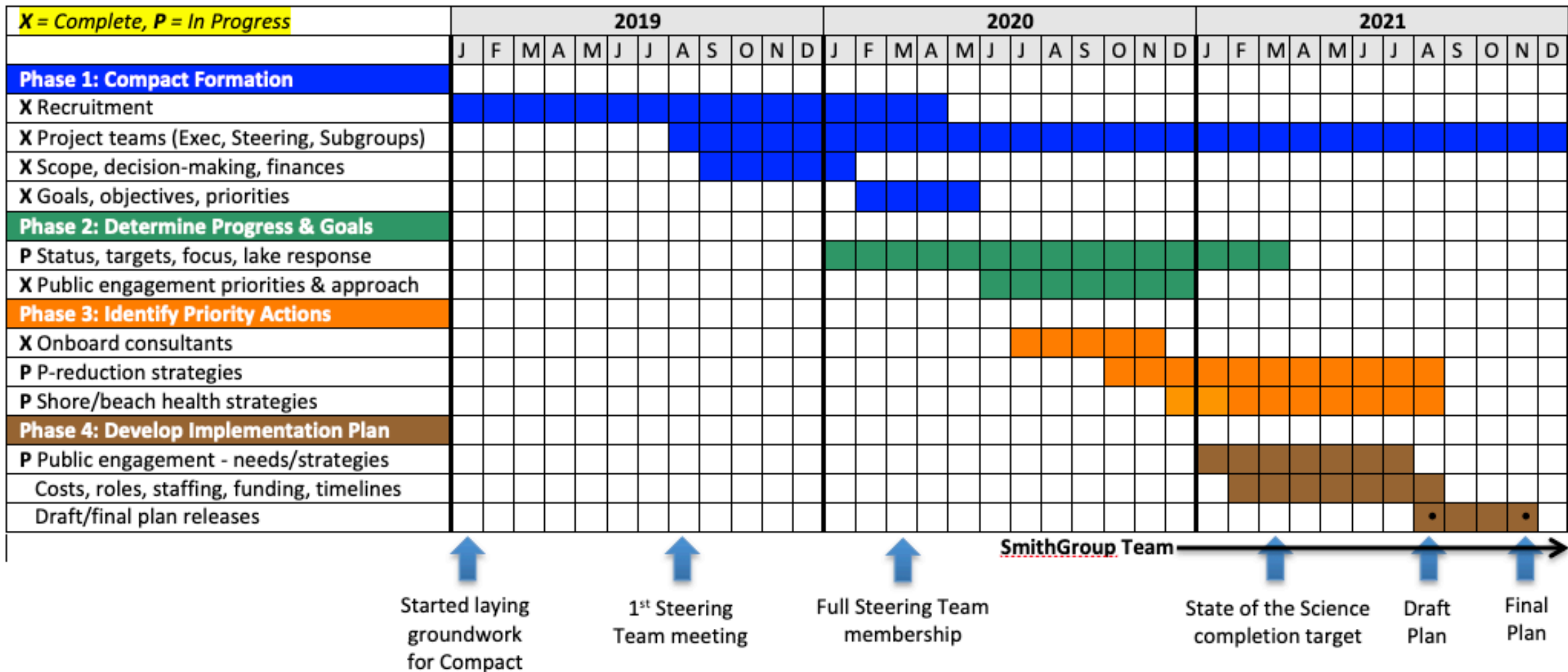
HEALTHY LAKES. HEALTHY COMMUNITY.

Yahara CLEAN 3.0 Updates

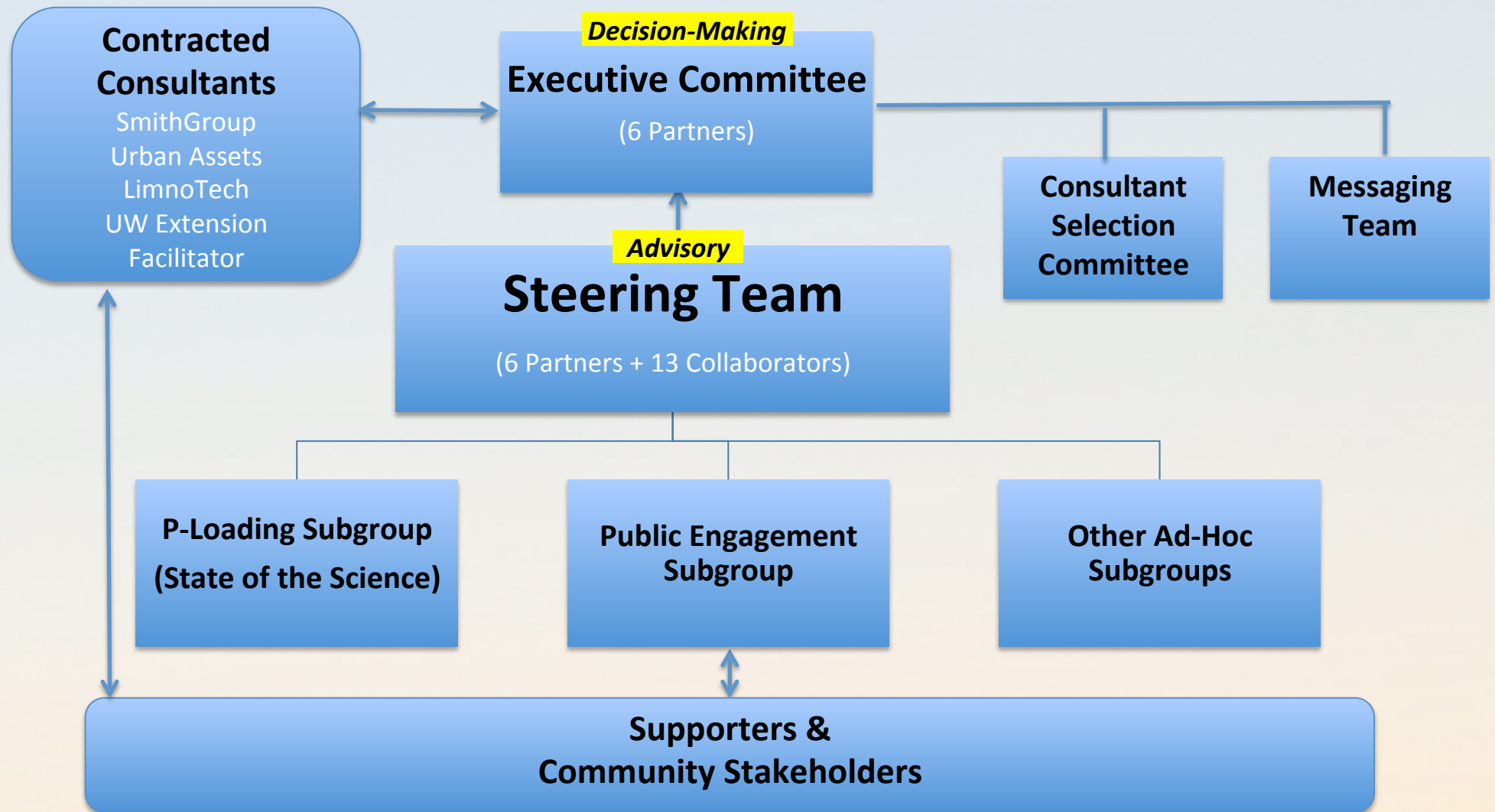
- Phosphorus-loading goal
- Gap
- Action targeting
- Stakeholder-based solutions
- Community involvement



HEALTHY LAKES. HEALTHY COMMUNITY.



HEALTHY LAKES. HEALTHY COMMUNITY.



HEALTHY LAKES. HEALTHY COMMUNITY.