



Representable.org

ORGANIZATION PARTNERSHIP GUIDE



Why Representable?



Representable.org is an online platform for individuals to submit and share maps of their communities of interest, and for organizations to easily collect and analyze maps at scale. Representable's goal is to mobilize communities to get the representation they deserve by increasing public input in map drawing, enabling a more impartial and transparent process. Partnering with Representable means that your community members will be able to advocate for themselves in the redistricting process. We hope your organization will be able to use our tool to educate its members on the redistricting process and help them identify the communities of interest they are a part of. It is important to note that Representable is not meant for creating the perfect district, but instead for drawing community of interest maps.

The Representable team is committed to working closely with organizations to cater to their data collection and policy needs so we can provide the best possible product. We hope to foster a close relationship with every organization we work with, and build a network of partners across the country, all working together to achieve a more democratic process in redistricting.

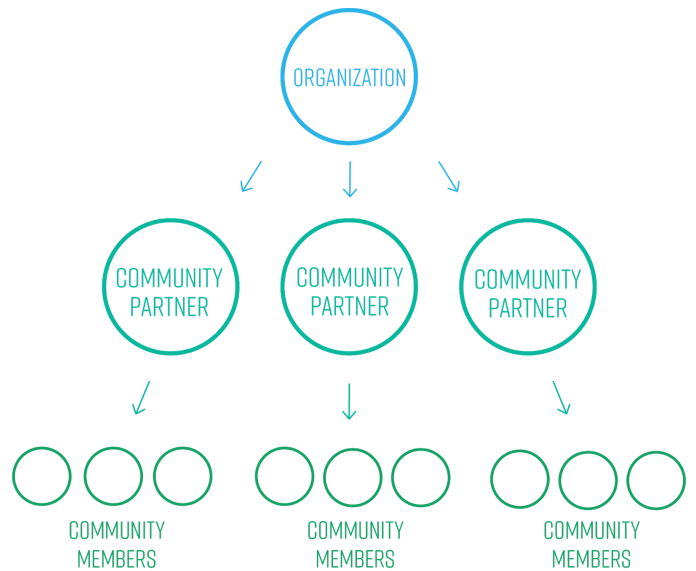
Organizing a Community Mapping Drive

Representable makes it easy for partner organizations to collect community of interest (COI) maps through **Community Mapping Drives**. Community Mapping Drives give organizations the ability to organize the volunteers they would like to collect maps from into groups. Organizations can send out a link to the Community Mapping Drive to their members through email. Multiple Community Mapping Drives can be held by one organization, so that different communities an organization wants to empower can all be addressed separately. Organizations are able to download the results of a Community Mapping Drive as an aggregate.

An example of an organization hosting multiple Community Mapping Drives can be Organization A hosting a Community Mapping Drive for the agricultural hispanic region in city X, the riverside population that is concerned about the watershed in city X, and a young black school district in city X.

Who You Need to Run a Successful Community Mapping Drive

In order to run a community mapping drive, it is helpful to develop an organizational structure that allows for greater connectivity and accountability. It is likely that your organization will be working with community partners that have a direct line of communication with community members. Allowing community partners to play an active role in volunteer recruitment and training encourages greater community engagement, which is especially important in democratizing the redistricting process. Representable recommends the following communication structure shown in the chart to the right.



In terms of specific roles your organization should fill in order to run a successful Community Mapping Drive, Representable recommends that there are individuals that can take responsibility for the following tasks:

1. Communication with the Representable outreach team
2. Communication with community partners
3. Training of community partners and/or volunteers

Creating a Timeline for Community Mapping in Your City/State

Participating in your state's redistricting process is a long term commitment-- that's why we recommend setting specific goals for your organization and creating a timeline to reach them. The length of your timeline and the goals you set largely depend on the redistricting criteria in your state and when the new district maps will be drawn. We're happy to work with you to identify a reasonable timeline, but first, we recommend taking a look at the timeline we've developed with one of our partners:

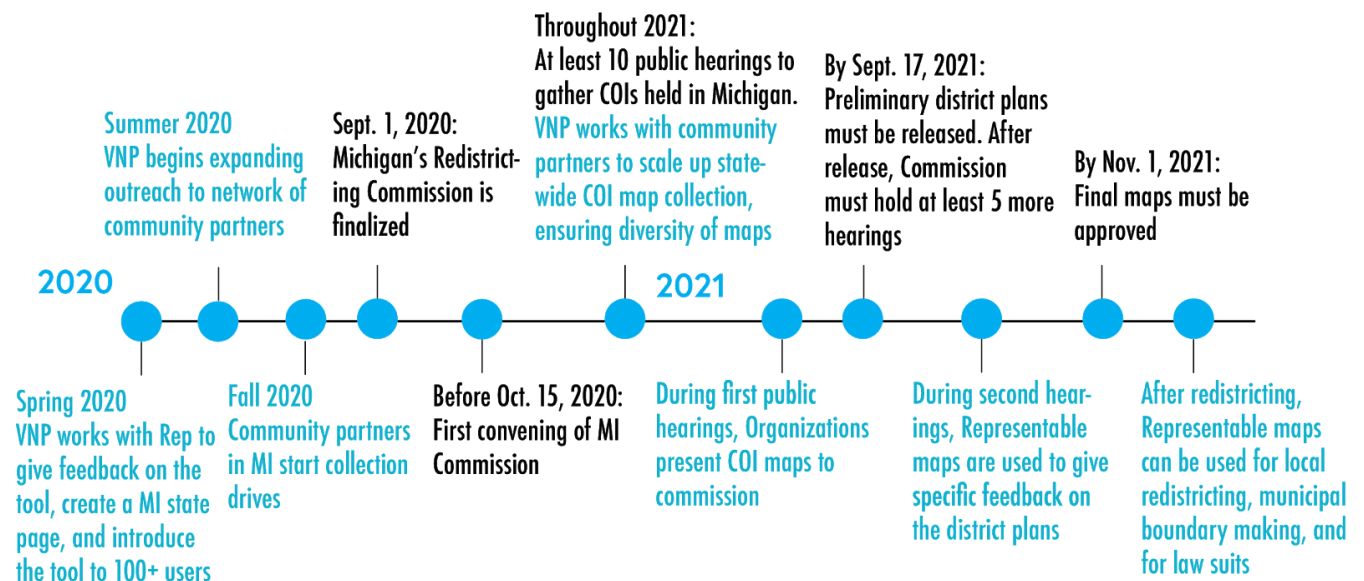
Michigan

State with an Independent Redistricting Commission

In 2018, Michigan voters ratified the creation of an Independent Citizens Redistricting Commission. Consequently Michigan will instate an independent redistricting commission that must take into account communities of interest. Representable partnered with Voters not Politicians (VNP), an organization working to combat gerrymandering in Michigan, to increase public input in this process. The rollout timeline for Michigan is a good reference for states which have an independent redistricting commission considering communities of interest.

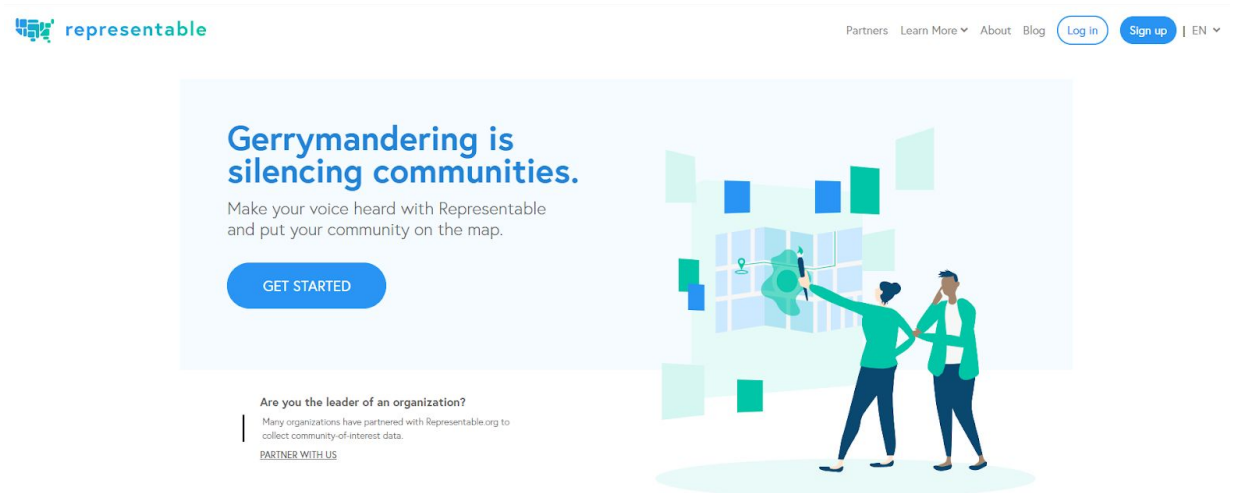
Items highlighted in blue are actions taken by the organization.

Items highlighted in black are governmental deadlines and requirements.



How to Create a Community Mapping Drive on Representable.org

1. Find our homepage at <http://representable.org>. Click the sign up button on the top right corner of the page.



2. Create an account by entering your email, username, and password.

Sign Up

E-mail

Password

Password (again)

 Making an account helps us protect legitimate submissions.

SIGN UP

Already have an account?

Log In

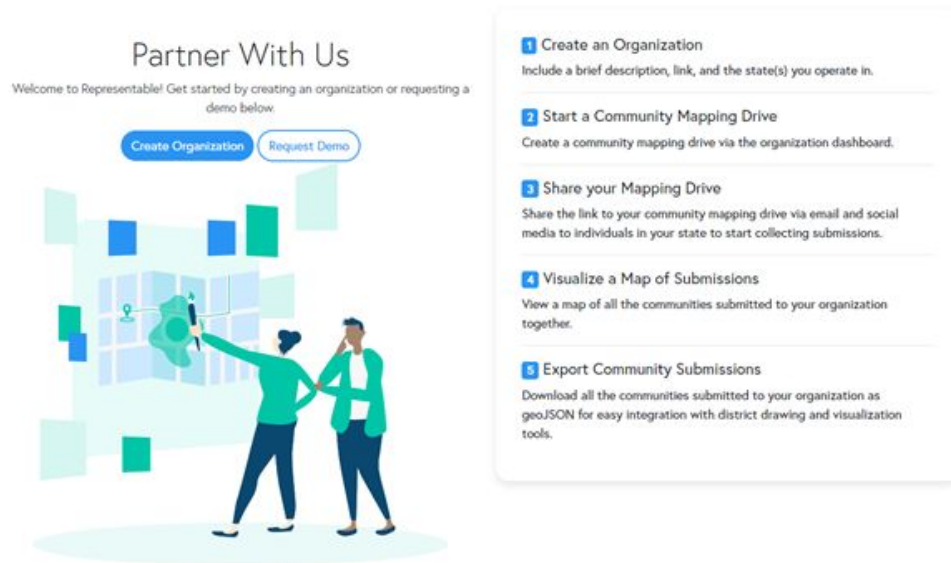
E-mail

Password

[Forgot Password?](#)

LOG IN

- Once you've created an account, log in and look for "Partners" at the top of the page. Here, you can create your organization. In order to create an organization, click "Create Organization".



- Next, enter the details of your organization. This information is visible to your members, so it's helpful to include an accurate description of the organization. Adding the state that your organization operates in allows Representable to include your Community Mapping Drives on the respective state page.

Partners [Learn More](#) [About](#) [Blog](#) [My Account](#) [Add community](#) | EN

Create an Organization

Organization Name:

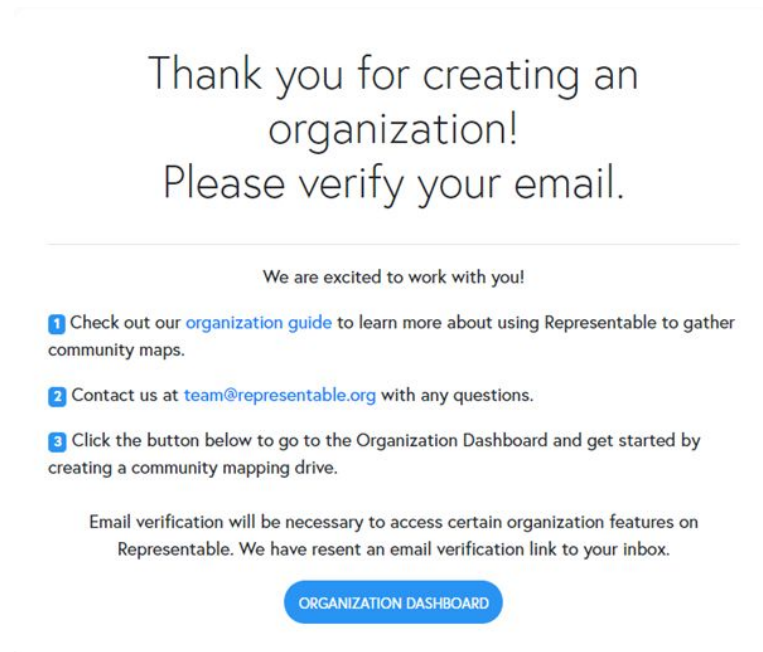
Description:

Link to Organization Website:

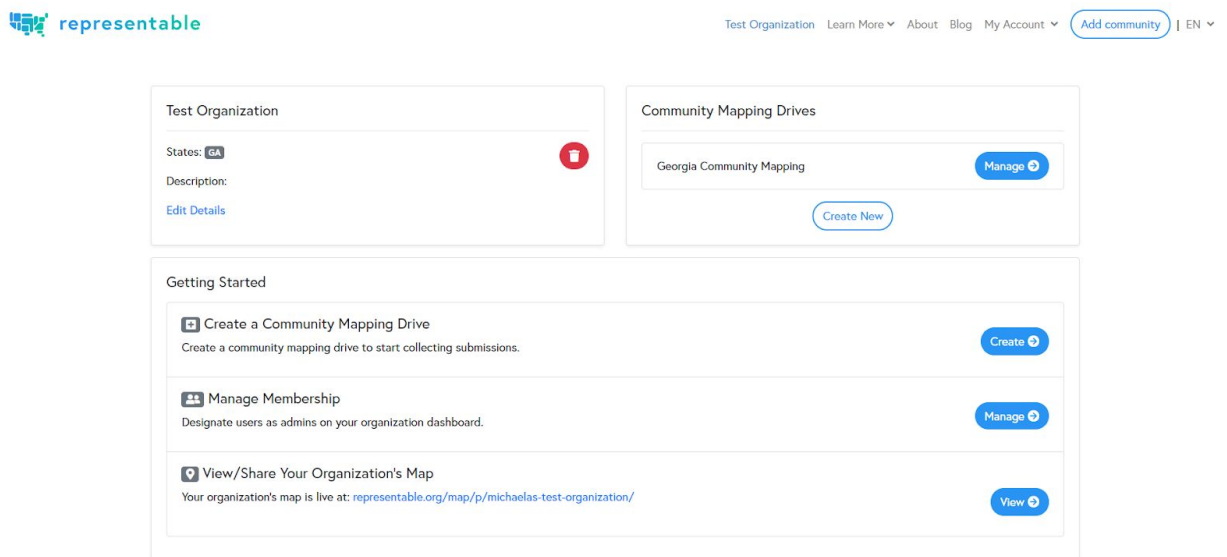
States:

[Submit](#)

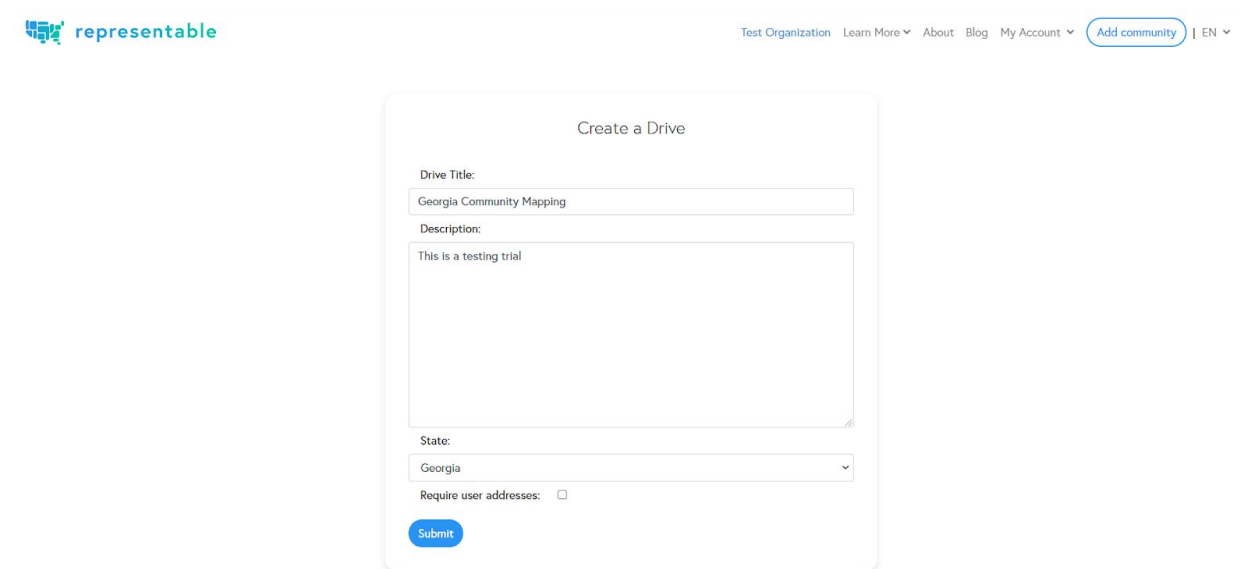
5. After submitting your organization, you can go back to the organization dashboard to manage your organization by clicking the blue button.



6. On this page, you can create a Community Mapping Drive, as well as upload an email list to pre approve submissions, manage your organization's members, moderate flagged submissions, and view all the maps submitted to your organization. In order to create a Community Mapping Drive, you need to click the "Create New" button in the box on the top right of the page.



8. Here, you can create a page for your community Mapping Drive by including a name, description, and the state of your Community Mapping Drive. You can also choose whether or not to require respondents to give their address.

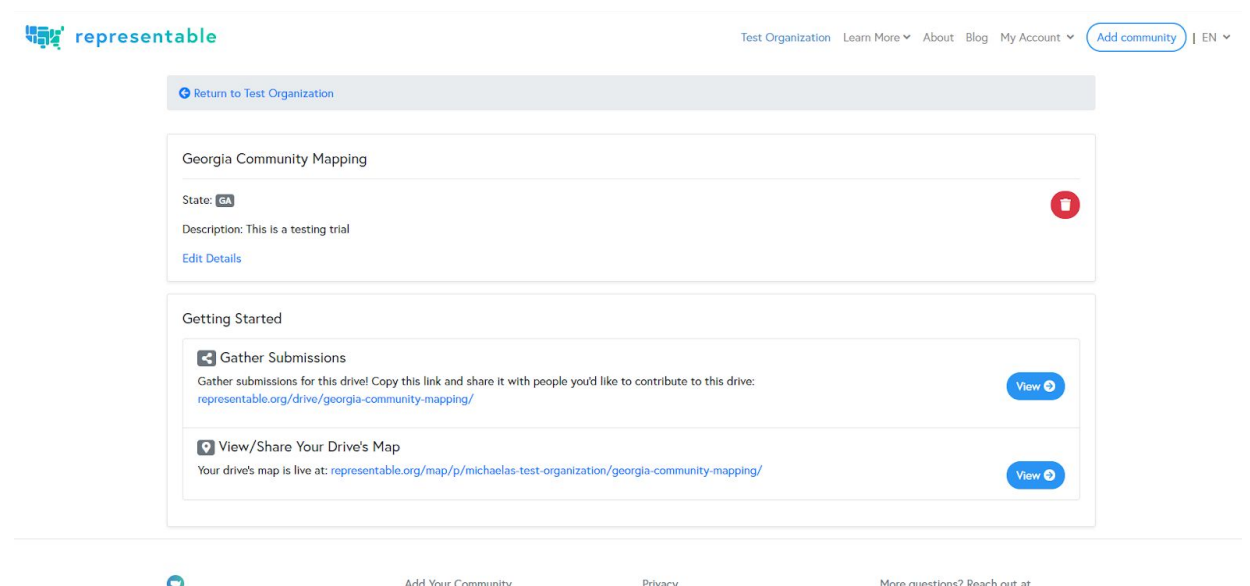


The screenshot shows the 'Create a Drive' form on the representable website. The form is titled 'Create a Drive' and contains the following fields:

- Drive Title:** A text input field containing 'Georgia Community Mapping'.
- Description:** A text area containing 'This is a testing trial'.
- State:** A dropdown menu with 'Georgia' selected.
- Require user addresses:** A checkbox that is currently unchecked.
- Submit:** A blue button at the bottom of the form.

The website header includes the 'representable' logo, navigation links for 'Test Organization', 'Learn More', 'About', 'Blog', and 'My Account', and a blue 'Add community' button. The language is set to 'EN'.

9. Once you submit your Community Mapping Drive, you can edit the description of the mapping drive, get a link to the drive to send to volunteers, moderate submissions, and view the maps collected. To view the maps collected, click the bottom-most, blue button.

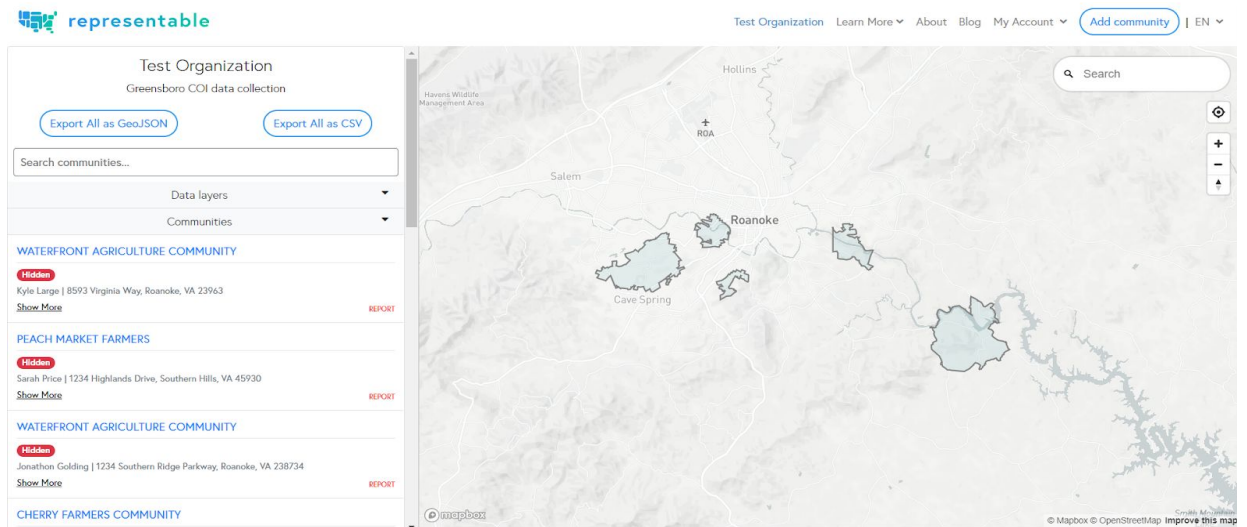


The screenshot shows the 'Georgia Community Mapping' drive page on the representable website. The page includes the following elements:

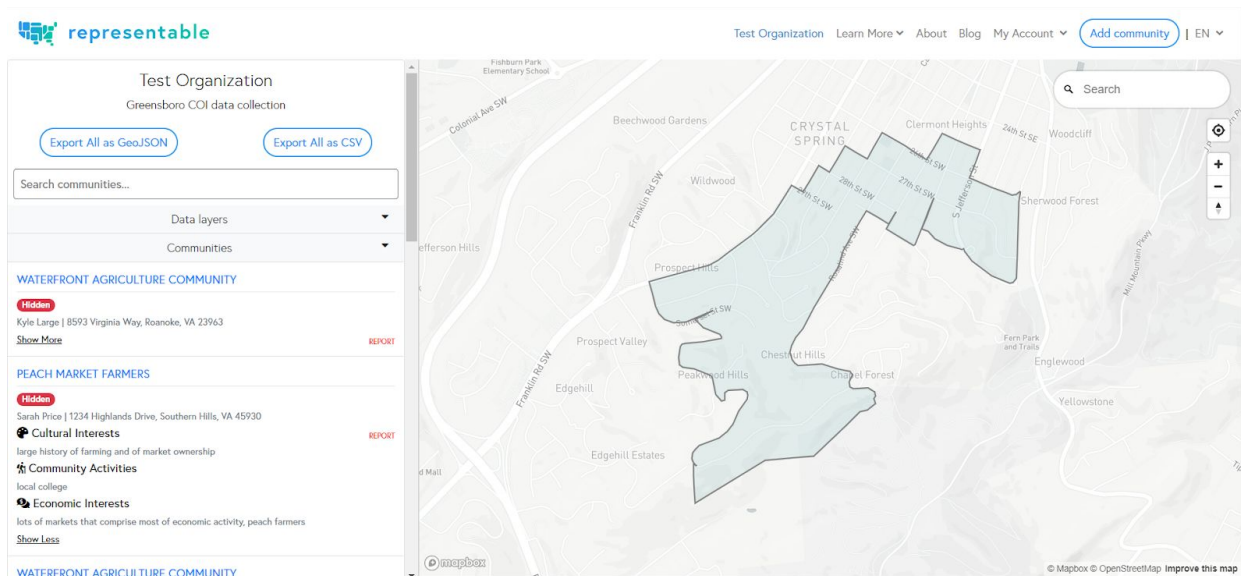
- Return to Test Organization:** A blue button at the top left.
- Drive Details:** A section showing the drive title 'Georgia Community Mapping', the state 'GA', the description 'This is a testing trial', and an 'Edit Details' link. A red trash icon is visible on the right.
- Getting Started:** A section with two main actions:
 - Gather Submissions:** A section with a 'Gather Submissions' icon, a description 'Gather submissions for this drive! Copy this link and share it with people you'd like to contribute to this drive:', and a link 'representable.org/drive/georgia-community-mapping/'. A blue 'View' button is on the right.
 - View/Share Your Drive's Map:** A section with a 'View/Share Your Drive's Map' icon, a description 'Your drive's map is live at: representable.org/map/p/michaelas-test-organization/georgia-community-mapping/', and a link 'representable.org/map/p/michaelas-test-organization/georgia-community-mapping/'. A blue 'View' button is on the right.

The website footer includes a Twitter icon, links for 'Add Your Community', 'Privacy', and 'More questions? Reach out at'.

10. On this page, you can see the maps drawn in your Community Mapping Drive as a collective. Click any of the maps in order to see the description of the COI.



11. Once you choose a community, you have the ability to export it as a GeoJSON, CSV, or pdf file. Downloading the data as a GEOJSON file allows you to upload it into mapping software such as Caliper or ESRI.



Who Should I Invite to Submit COI Maps?

It is helpful to think about which outreach strategy will lead to the most impact. Although quantity of maps is important in order to have ample community data available, it's also crucial to focus on reaching communities that have been historically underrepresented in redistricting (BIPOC groups, religious minorities, etc.).

To find volunteers, you can tap into your email lists, social media networks, volunteer lists, and community partners. Ask the members of your organization about which specific communities in your network have been left out of the redistricting process in the past, and figure out who the leaders in those communities are.

Before sending out links to your community mapping drives, it is helpful to understand how to best organize your volunteers. There are multiple ways to use our community mapping drive feature.

1. Send out one community mapping drive to all of your members. This can make it easier to promote your mapping initiative to the members of your organization, especially through social media and other promotional materials
Ex. "Join the [Organization Name] Community Mapping Drive!"
2. Organize the different communities/areas you are working with into separate community mapping drives. This structure is helpful if your organization is interested in making sure that certain communities are directly addressed in your promotional materials and would like more flexibility in the language used. This gives your smaller community partners the ability to name and describe specific Community Mapping Drives for the communities they work with. In this case, they are also able to choose volunteers from their community to send the mapping drive to.
Ex. "Join the Manhattan Latinx Community Mapping Drive"
"Join the Rocky Mountain national park Mapping Drive"
"Join the NYC Coalition for the Homeless Community Mapping Drive"

How to Encourage Volunteers to Join your Community Mapping Drive

We're here to help your organization reach your goals in terms of the number of maps submitted to your community mapping drive. However, the quality of maps submitted is even more important than quantity, so we're also focused on helping organizations educate their volunteers about the process and importance of submitting a community of interest through Representable.

In order to gather volunteers for your Community Mapping Drive, we recommend reaching out to your community members through an email with a link connecting them directly to the Community Mapping Drive created under your organization. Users will also be able to find your organization through your state's page on our site.

When introducing your volunteers to Representable through email, it's helpful to explain to them why it's important to submit COI maps and how Representable can help them advocate for their communities. We recommend using the following email template:

Thank you for joining our initiative to identify and represent communities of interest (COIs) in [INSERT STATE]. In order to address gerrymandering in our state, it is important to provide map drawers with COI maps so that the voices within your community are listened to.

[ORGANIZATION] is working with [Representable.org](https://representable.org), an online mapping tool, to help our members draw their communities. Representable.org was developed by the Princeton Gerrymandering Project, a group of nonpartisan researchers at Princeton University who seek to end gerrymandering in the U.S.

Submitting a map to Representable.org is expected to take approximately 10 minutes. You can use a smartphone, a tablet, a laptop, or desktop computer to draw your map. You are able to create as many maps as you like.

In order to submit a community of interest map, click on the following link and follow the Community of Interest submission process below: **[link to community mapping drive]**

Before you start mapping your community through Representable, it's helpful to learn more about communities of interest and the redistricting process. Check out these resources provided by Representable!

[What is Representable? One Pager](#)

A brief introduction to what Representable is and how it addresses gerrymandering.

[Community of Interest Education Guide](#)

This is an in depth guide into redistricting policy, communities of interests, and how Representable fits in.

[How to Videos](#)

Representable has developed a video on how to navigate the site and use the mapping tool. Our outreach team has also created an educational video that provides an overview of redistricting, gerrymandering, and how Representable can be used to address this issue using communities of interest

Creative ways to check up on your volunteers

In order to get a high volunteer turnout, it's likely that your volunteers might need a reminder to send in their COI map submissions. We have thought of some creative ways to remind your volunteers to submit maps and help them get excited about your mapping drive.

1. Highlight one of your member's submissions! Explain what this map can teach us about the community drawn and how it will help in the redistricting process. Make sure to ask them for their permission. Then remind your volunteers to submit maps.
2. Share how many maps have been submitted so far, and why it's important that your organization reaches its mapping goal.
3. You can share the link to your Community Mapping Drive on your organization's social media accounts.
4. If you have access to the phone numbers of your volunteers, you can call them to make sure they send in their maps through Representable. Although this can take some time, it is really helpful to understand why your volunteers might be having trouble with the site. Ask the community organizers you're working with to help!

Educating your Volunteers

The Representable team has worked with numerous organizations to develop comprehensive educational materials for our users. A big part of Representable's mission is to help our users to learn about the redistricting process and the role of communities of interest as they use our tool.

[What is Representable? One Pager](#)

A brief introduction to what Representable is and how it addresses gerrymandering.

[Community of Interest Education Guide](#)

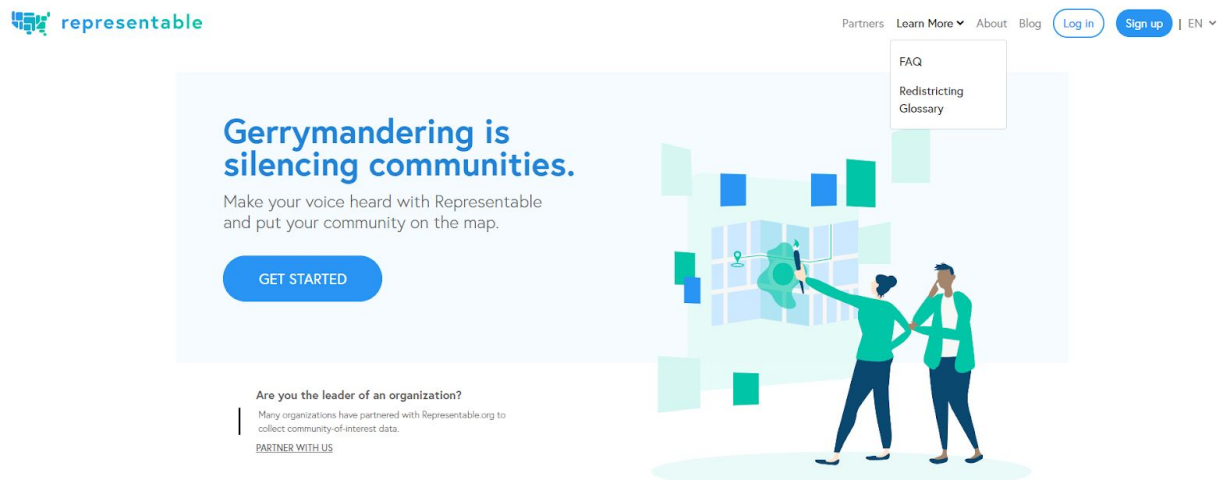
Our education guide explains redistricting policy, communities of interests, and Representable's policy use case. This is useful for volunteers that have never used Representable before.

[How to Videos](#)

We have developed a video on how to use Representable as a [user](#) and as an [organization](#). These offer a walk through of the different features on our website. Our outreach team has also created an [educational video](#) that provides an overview of redistricting, gerrymandering, and how Representable can be used to address this issue using communities of interest

[Redistricting Glossary Terms](#)

Representable has developed a glossary of terms which can be useful for users who are unfamiliar with redistricting! It can also be accessed on our website under “Learn More” :



Materials and Advice for Demos with Your Volunteers

If you feel that you have a good understanding of Representable and how to use it, you can host a demo of our tool for your volunteers. This allows volunteers to ask questions as they're learning how to use the tool. We recommend that your members take a look at the site on their own before attending a live demo. Another option is to have community organizers hold smaller meetings with their community members about how to use the tool. Here is a link to some [slides](#) which you can use as a template for your own demo!

If your volunteer base would benefit from some extra guidance, **the Representable team would love to host a webinar in which we could provide a live demo of the tool** and answer any technical questions your may volunteers have.

Privacy Policy

Representable is an open source web platform designed for public use. This means that our data can be accessed by organizations, policy makers, map drawers, journalists, and members of the public. It is completely free to use, and Representable does not sell any data.

Representable asks users to enter identifying information in order to submit a map, but this information is not visible to anyone but the organization the user is a part of.

How to Use Representable Data as an Organization in Redistricting

Representable allows for users to download their maps individually, or organizations to download their member's maps as an aggregate. This offers the flexibility for either individuals or organizations to submit their maps to their state's redistricting entity.

An organization is able to download each COI map individually, or as an aggregate in one file. All the maps submitted to the organization can be downloaded collectively, or from an individual Community Mapping Drive.

It is possible to download community maps in a GeoJSON, CSV, or pdf format. The GeoJSON format allows Representable data to be interoperable with other mapping softwares such as ESRI or Caliper. The maps created through Representable can be imported into these softwares to draw district lines.

Additionally, one can see all of the maps drawn on our website by state. These maps can be downloaded in aggregate as a CSV and GeoJSON format.

FAQs

For Users

What are the units used to draw my community?

The units are [Census Block Groups](#).

Can users access this website on their mobile devices?

Yes, the website can be accessed on mobile devices including smartphones and tablets.

Are there plans to translate the website into additional languages?

Yes! The site is currently translated in Spanish and Arabic, and we have plans to expand upon these translations. If there is a specific language that is vital to your usage of our tool, please let us know at team@representable.org.

Will Representable.org continue to be a free tool?

Yes! Representable.org was created to be an accessible way to increase public input from all communities in the redistricting process. It will always be a free tool.

Why are data layers, such as demographic information, only available after I draw my community?

Before users draw their maps, we present guiding questions so that they can tell mapmakers the shared values and location of their community. This testimony can include demographic information. But after rounds of user testing and interviews with mapmakers, the Representable team found that it was best to present this information as an analytical layer that is visible after people draw their maps.

The COI data collected from our tool is meant to be one-layer of information during the redistricting process. If you would like to see this COI data in conversation with demographic data, you can export the COI maps you collected as a GEOJson file and analyze this data in another mapping software.

Can I edit my community map after I have submitted it?

Currently, Representable does not have the functionality to go back and edit the text of community maps. However, you can access your previously created communities at any time. If you'd like to make a change to your community map, you can delete your previously drawn community and re-draw it with the updated community information!

For Organizations

How is Representable different from other mapping software systems?

Representable.org is a free tool which solely focuses on drawing communities of interest. Additionally, only Representable has mapping drives for organizing community maps and the structured questions before drawing the map (i.e. "Economic Interests", "Community Activities", etc). We also heavily prioritize a friendly user interface that works as both a tool for collecting public input and educating users.

Lastly, Representable is a very malleable tool, and we can add features for your state/organization specifically! Usually, this includes additional boundaries that you would like to see under the "data layers" feature of our tool.

How will this tool be affected by the delay of the release of Census information?

Whenever the information becomes available, our team will update the units, Census Block Groups, accordingly. However, the expected changes to Census Block Groups will be small. Otherwise, since users do not rely on Census demographic data when they draw their communities, the tool will not be affected by any delay. You can start drawing COI maps today!

How can I use the information gathered from Representable ?

Our organization guide outlines several possibilities for how to most effectively use COI data collected with our tool! If you would like to speak with a Representable team member about what would work best in your specific case, please reach out to us at team@representable.org.

What mapping systems are compatible with Representable?

You can upload a GEOJSON file of the COI data collected from Representable into several mapping systems! They include Maptitude, ESRI, and Dave's Redistricting App.

DistrictBuilder is implementing a feature that enables mappers to add communities of interest to DistrictBuilder maps in order to provide extra context. According to their public roadmap, this feature will be available by March 2021!