

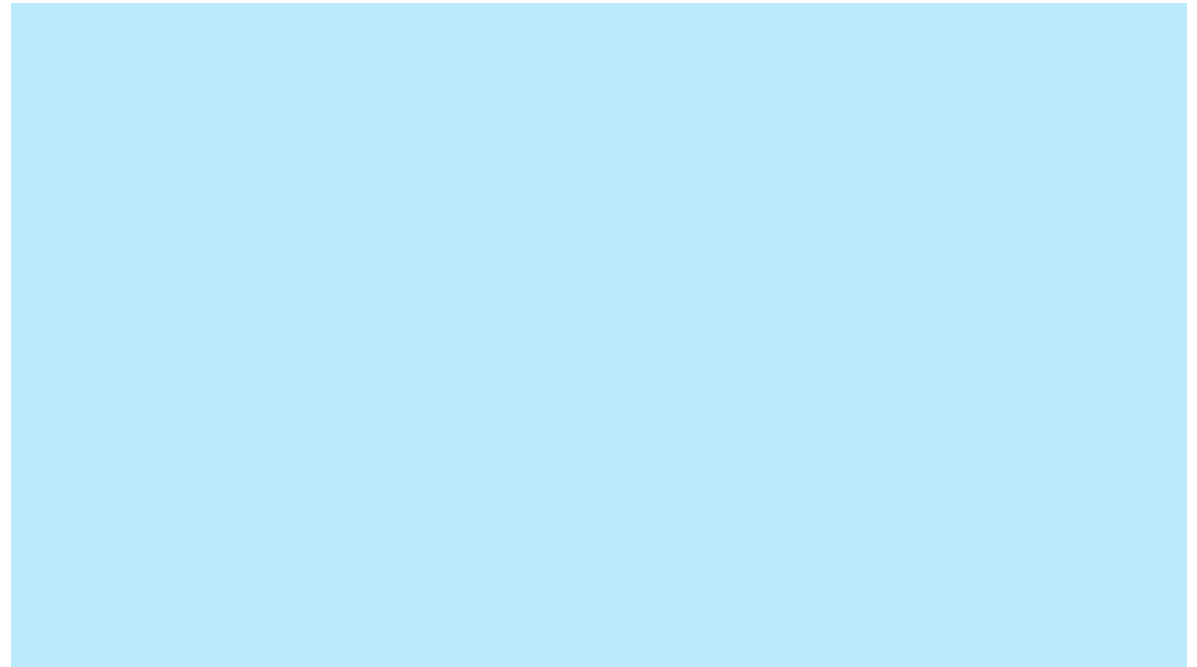


representable

Representable gives communities a **voice** in drawing voting districts.

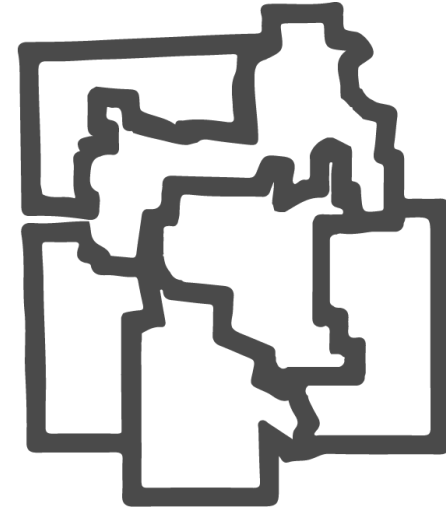
Representable allows people to draw Communities of Interest and share information about the interests in those communities.

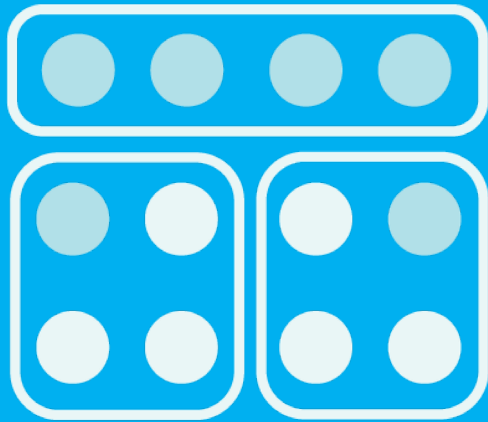
Making this information available encourages mapmakers to take these communities into account during redistricting, in order to avoid gerrymandering and the “packing and cracking” of marginalized groups.



WHAT IS REDISTRICTING?

Every ten years, the government gathers population information through the census. Using the census, the state governments draw new voting districts. This process is called redistricting. Districts decide which communities vote for which representatives in local, state, and federal elections.





WHAT IS GERRYMANDERING?

Gerrymandering is the practice of drawing district lines in a way that favors one group. Gerrymandering allows politicians to choose voters, instead of voters choosing politicians. Minority groups have disproportionately suffered from the manipulation of district lines.

What can **you** do to stop gerrymandering?



Draw your Community of Interest with Representable.

COMMUNITIES OF INTEREST



Communities of Interest (COI) help combat gerrymandering. If a community can identify itself on a map and show shared interests, it is less likely to be split up in the map drawing process. This makes it easier for communities to elect officials that represent them. A COI map is an easy way to show your community on a map to mapmakers.

WHAT IS A COMMUNITY OF INTEREST?

A Community of Interest is a **geographic area** that shares **cultural, historical, or economic** interests. Communities of Interest encourage the drawing of fairer voting districts.

Communities of Interest can include...

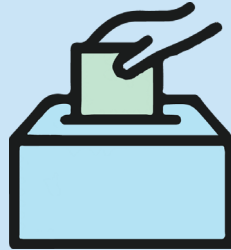
1

Your neighborhood, or an area you live in.



2

The people you would like to choose representatives with.



3

A local group that shares a common interest.



DISCUSSION QUESTIONS

- Imagine describing your community to a visitor from out of town.
- What are the significant landmarks in your community?
- Think about how your community is different or alike from the communities around you.
- What would you want a politician or map maker to know about your community?
- What are your goals? Keeping your community together, uniting your communities, or recommending a larger map with coalition partners, etc.

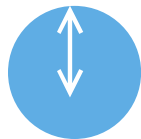
When it comes to map drawing, there are 3 ways of considering communities...



Map drawers ignoring Communities of Interest.



Map drawers defining Communities of Interest.



Communities define Communities of Interest,
and map drawers listen.

HOW REPRESENTABLE WORKS?



Describe your Community

that help you identify the shared interests in your community.



Draw a Community Map

by choosing units that make up your community. Use landmarks to draw your map.



Share your Map

as public input for map makers to use when drawing new voting districts.

How to Draw Your Community

TIME TO START MAPPING!

Questions? Comments?