

Dane County's Climate Action Efforts

Sustainability Subcommittee

July 7, 2021



Kathy Kuntz, Director

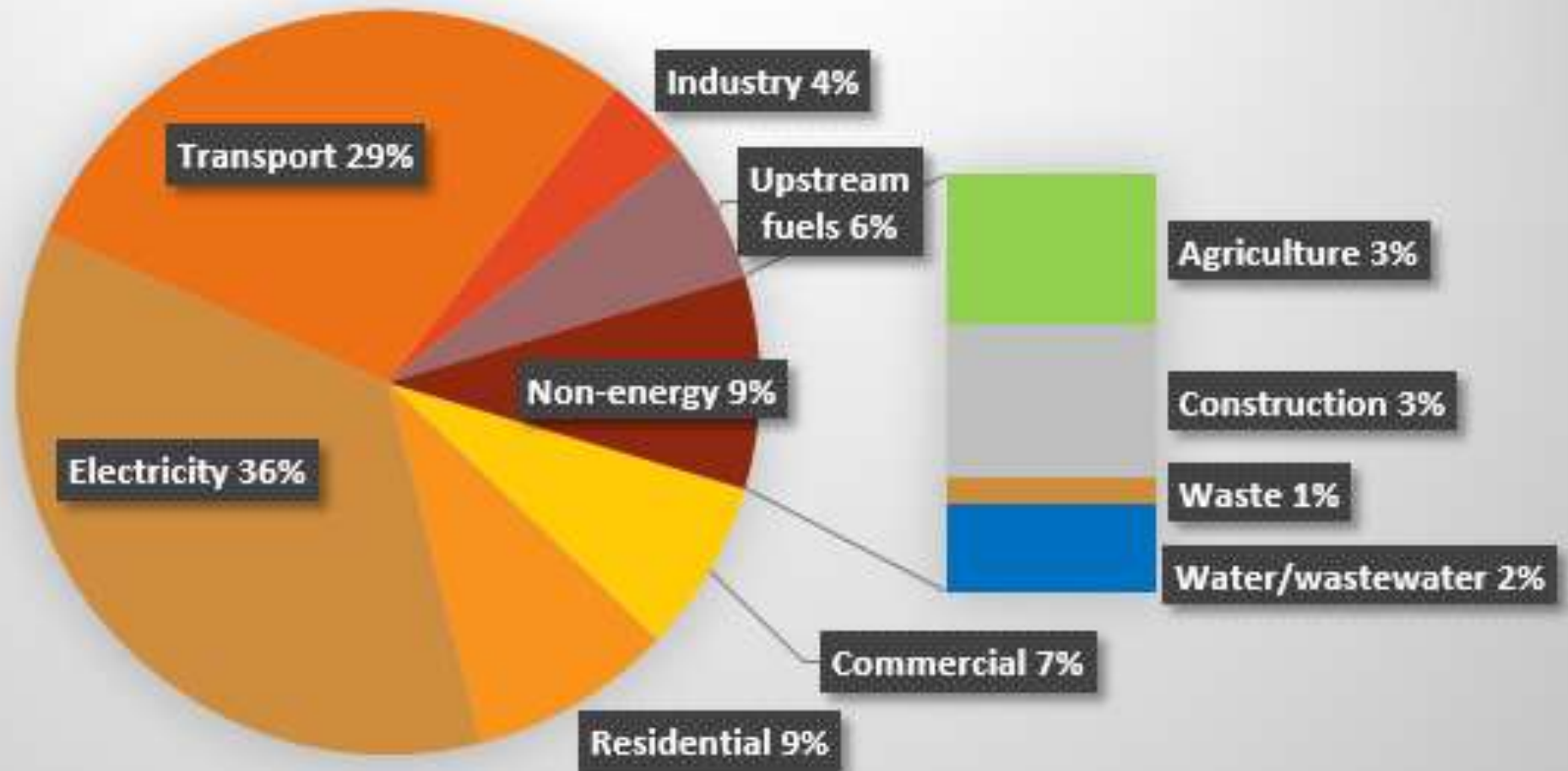
Our Climate Action Plan

- Three-year stakeholder process
 - Input from 100s of local stakeholders
- Multiple levels of impact
 - County Operations
 - Local communities
 - Businesses, individuals



County-Wide Emissions (2017) – 7.5MMtons

Base Year Dane County Emissions (CO2-equiv)



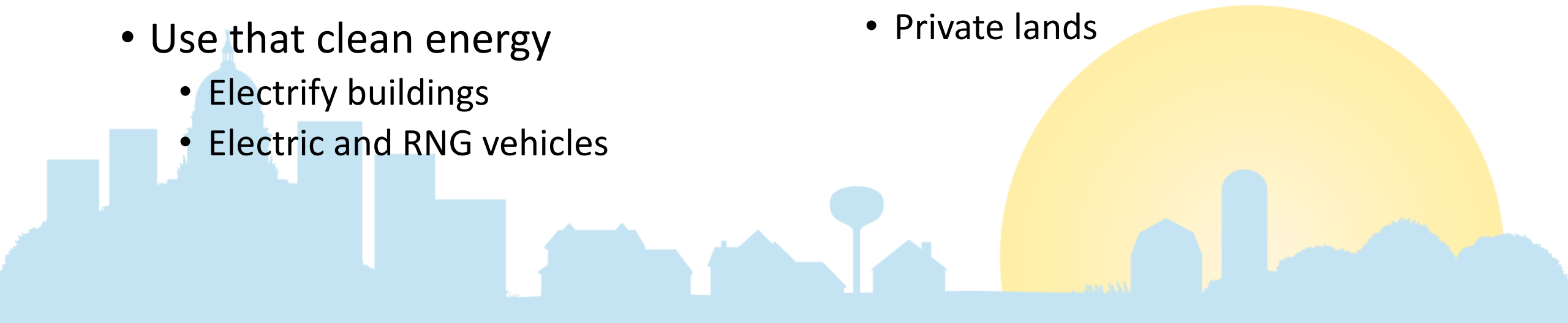
Subject-Matter Working Groups: 100+ Recommendations

Emissions

- Eliminate waste → efficiency
- Clean energy sources
 - Electricity from solar, wind
 - RNG from landfill, manure
- Use that clean energy
 - Electrify buildings
 - Electric and RNG vehicles

Sequestration

- Afforestation, reforestation
 - Rural and urban
- Regenerative ag practices
 - County lands
 - Private lands



Outcomes We're Pursuing

Emissions Targeted	Goal
Energy Usage	Reduce 2% annually by 2030, 3% by 2035 and 4% by 2040
Commercial building energy use	Reductions by 2025 with all new buildings using 75% less energy by 2040
Heat pumps	Convert ½ LP and oil heat homes by 2030; all by 2045 All new homes with heat pumps by 2040
Water – per capita demand	Decrease by 20% by 2030 and by 30% by 2040
Solar	1200 MW installed by 2030; with wind meet 100% of load by 2045
Wind	Meets half Dane County load by 2030; with solar meet 100% by 2045
Manure in anaerobic digesters	Half of all manure in county by 2030; 100% by 2050
Electric Vehicles (EVs)	57% sales share by 2040
Heavy-Duty Vehicles	60% use biogas by 2026
Transit buses	50% are electric by 2035
Vehicle Miles Traveled (VMTs)	15% reduction in total VMTs by 2050



Solid Progress in County Operations

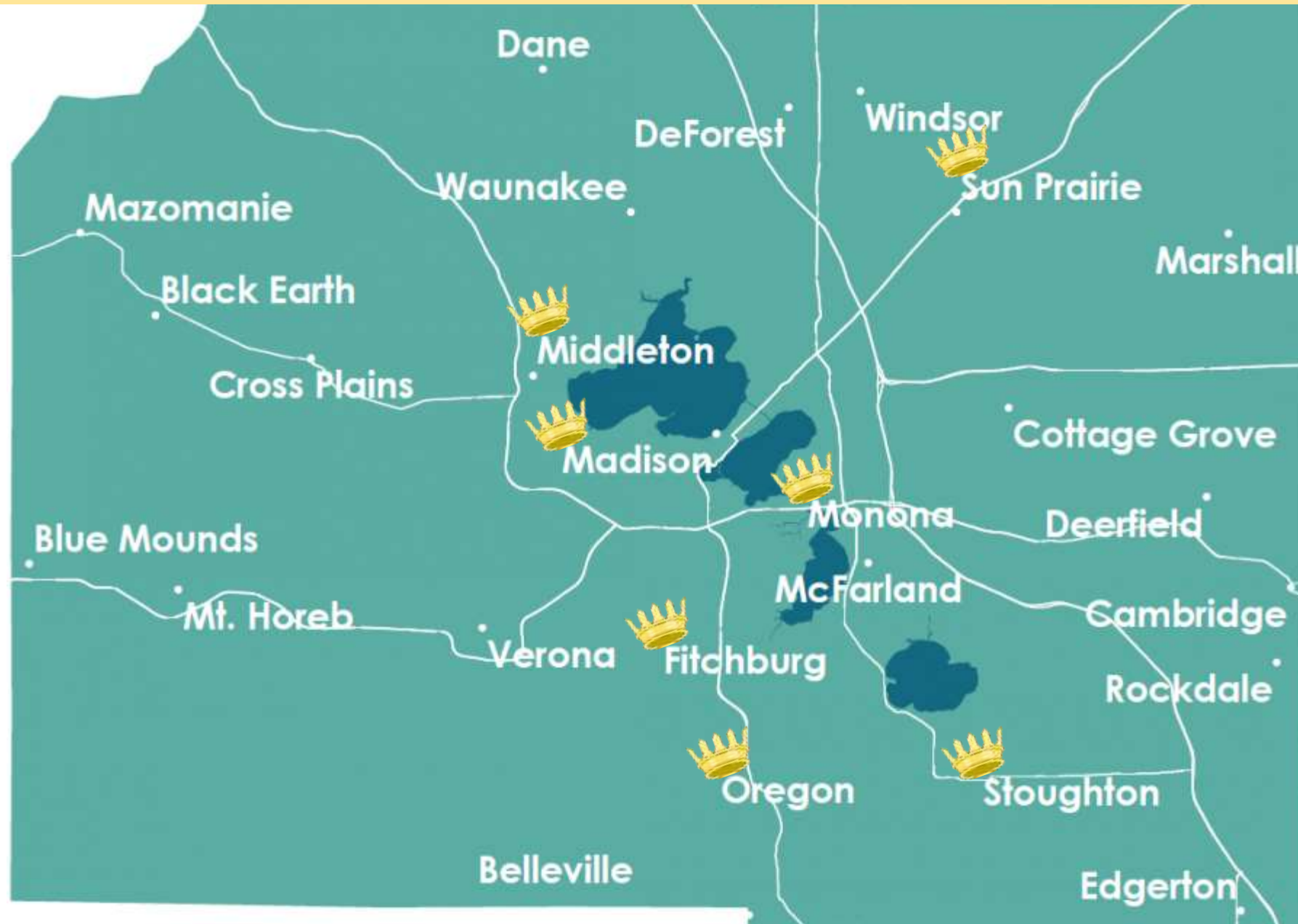
- 100% renewable electricity by 2024
 - Already at 45% in 2021
- Consensus that efficiency, clean energy vehicles are priority
 - Various departments, in various ways, are doing their part
- *The SMART Fund helped create change*
- *Important now to tell Dane County stories more broadly*



Communities with Active Sustainability Committees

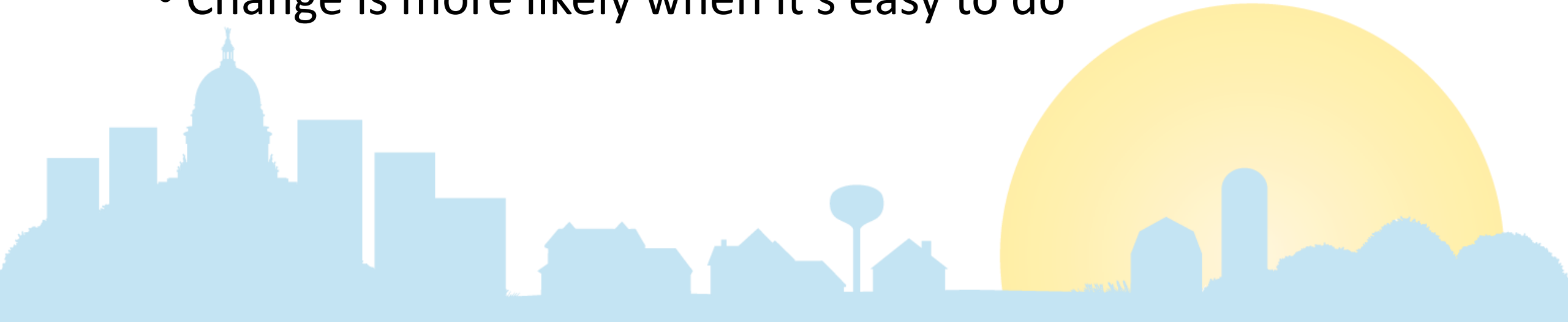


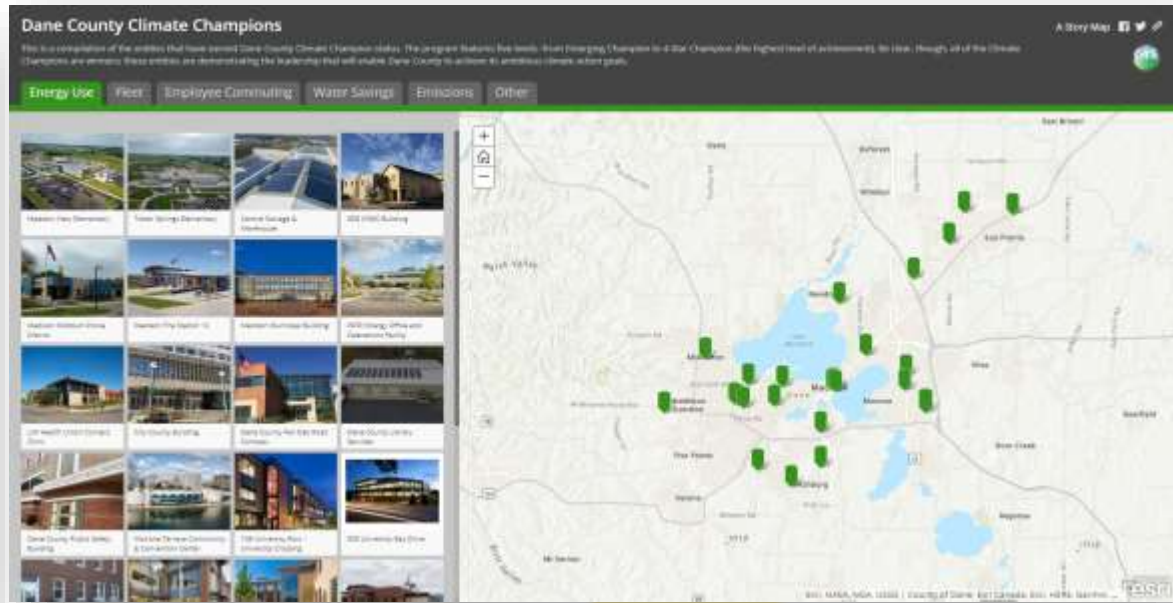
2020 Climate Champions!



Creating a New Normal

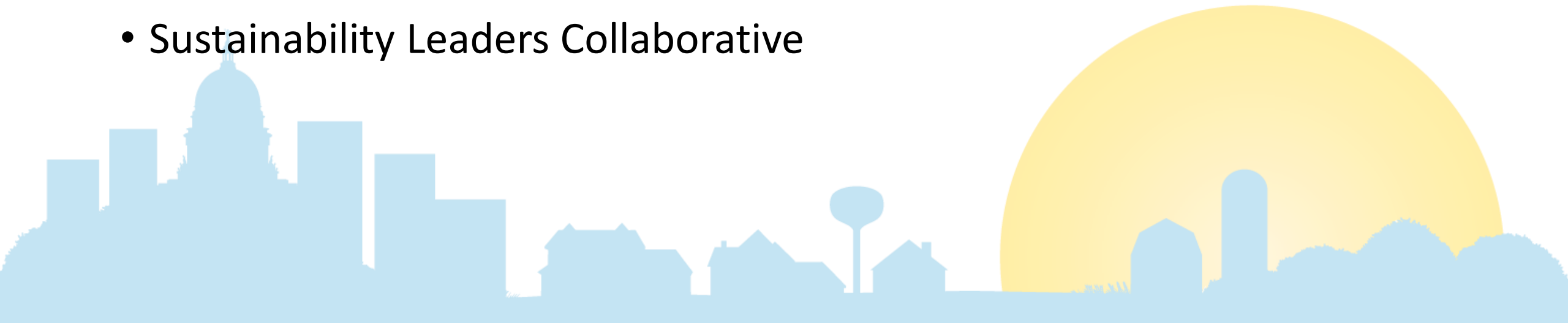
- Change is always difficult
- Visible practices multiply
- Positive reinforcement works
- Governments can eliminate barriers to change
- Change is more likely when it's easy to do





Eliminating Barriers

- Clean Energy Economic Development Grants
 - Equity models (3)
 - Telecommuting resources for businesses
 - Electrification of buildings (2)
 - Countywide solar group buy
- Property Assessed Clean Energy (PACE) Financing for Businesses
- Sustainability Leaders Collaborative



Empowering Climate Allies

- Set an example
- Encourage others to action
- Celebrate climate leadership
- Partner with us
 - Faith Leader Network



Thanks!

Kathy Kuntz

Kuntz.Kathryn@countyofdane.com

DaneClimateAction.org

