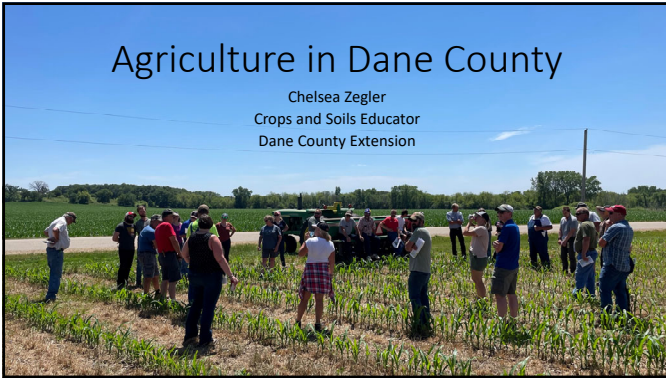


Agriculture in Dane County

Chelsea Zegler
Crops and Soils Educator
Dane County Extension



Did you know?

DANE COUNTY IS
No. 1 in Wisconsin's
grain industry

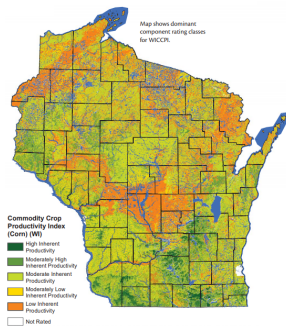


- No. 2 in cattle and calves
- No. 3 in hogs and pigs
- No. 4 in milk from cows

Why the productivity?

- Natural Resources
- Location/Proximity
- Large # of acres in county

Wisconsin Commodity Crop Productivity Index (WICPI) for Corn



WHAT DO OUR FARMS PRODUCE?



Grain



- Markets
- Jobs
- Timelines

Milk



- Markets
- Jobs
- Timelines

Cattle and Calves

- Markets
- Jobs
- Timelines



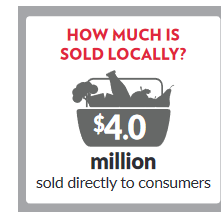
Benefits of Livestock

- Jobs – Community
- Crop diversity
- Principle of soil health/regenerative agriculture
 - Integrate livestock
 - Keep soil covered
 - Manure



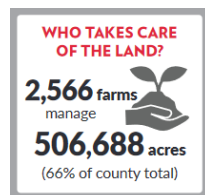
Opportunity for growth

- Exports
- Local food processors



Land Management

- Not all crop acres
- Ecosystem services and public good
 - Habitat
 - Water Infiltration
 - Invasive species
 - Mowing
 - Esthetically pleasing



2% of people feed the other 98%

Questions?

Chelsea Zegler
 Zegler.Chelsea@countyofdane.com

Agricultural Impact Report- Methods

- Ag census data
- 16% of state jobs (1 out of 8 or 9)
- 12% of state economy

NPR interview-Steve Deller (2019)

- Growth in food processing sector overall in the state, countering the loss of on farm labor or general # of farms
- 90% of milk goes into cheese in Wisconsin
- Growth in beef production (because less dairy farms)
- Two big ways to grow overall
 - Commodity market- Exports
 - Niche small local food markets (microbrewery)